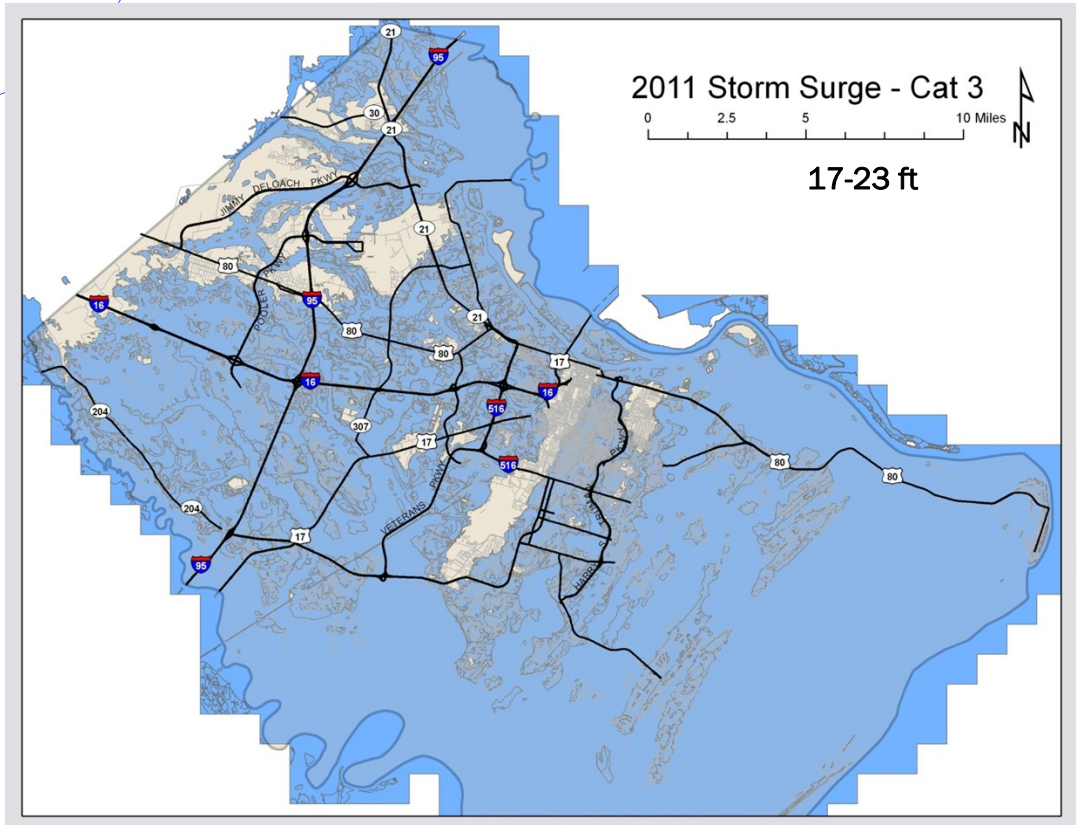


C E M A S I G N A L

C h a t h a m E m e r g e n c y M a n a g e m e n t A g e n c y

What's in your emergency supply kit?

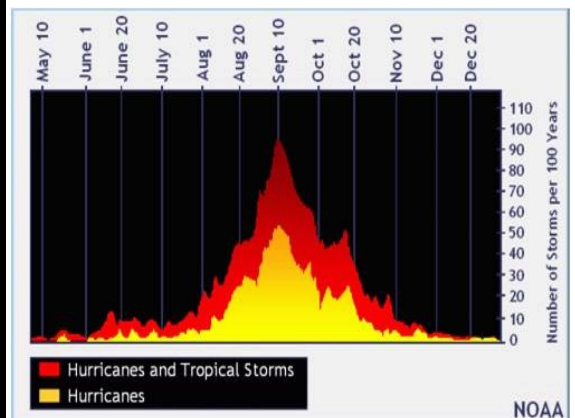
- Water
- Food
- Flashlights
- Batteries
- Weather radio
- First aid kit
- Medications
- Prescription drugs
- Battery operated radio
- Cash
- Important documents
- Blankets and pillows
- Clothing
- Toiletries
- Toys, books, games
- Pet care items



New Maps Show Greater Impact From Storm Surge

Above: The new map is based on new mapping technology. It shows far more potential for much greater damage than previously anticipated in a Category 3 storm. This premonition is not based on increased storm surge, rather a much higher level of accuracy in the topographic modeling.

Right: Graph of hurricane frequency for the Atlantic Ocean hurricane season. A peak in activity from August through October is clearly visible.



INSIDE THIS
ISSUE:

Director's Message	2
Storm Surge Update	3
2011 Hurricane Conference	4
New Evacuation Guidelines	5
ESF-1	6
ESF-2	17
ESF-3	9
ESF-4	12
ESF-5	7
	10
	11
	13
	14
ESF-6	9
ESF-7	15
ESF-8	8
ESF-9	20
ESF-10	13
ESF-11	15
	16
ESF-12	17
ESF-13	18
ESF-14	12
ESF-15	8
Calendar	22

DIRECTOR'S MESSAGE



The CEMA Hurricane Conference has come and gone with more than 350 public safety representatives attending from throughout coastal Georgia. Almost one-third of those attending submitted post-conference survey comments which were overwhelmingly positive. The only common recommendation, from less than a half dozen attendees, was a preference for a hot lunch versus the sandwiches; funds permitting, we'll see what we can do next year.

By taking advantage of the combined expertise of the audience, GEMA was able to redefine the essential clearance priorities and the State's guidelines for the Re-Entry Permit process. Essentially Priority One is going to be state and local response agencies and private sector utility providers to render the area safe for follow on first responders conducting life safety operations. Priority Two Alpha will consist of personnel conducting life safety operations such as search and rescue, emergency medical services, fire suppression; hazardous materials control, preliminary damage assessment, essential relief staff to critical medical

facilities and immediate utility restoration to critical incident facilities. Priority Two Bravo will consist of those individuals from the public and private sector that support the re-establishment of critical infrastructure which include but are not limited to petroleum and food distributors, non-emergency medical facilities such as dialysis centers, pharmaceutical providers, members of the media, medical facility support staff and local government essential workers. Priority Three will be residents, property and business owners. Unfortunately it is always difficult to convey that without power, food, water, wastewater treatment facilities, medical resources and public safety services, a post hurricane community is dangerous and not the place to be.

Most discouraging of the new information available on hurricanes is the recently revised Chatham County storm surge data. The last surge maps were based on information gathered by 1999 overflights using Light Detection and Ranging (LIDAR) equipment. SAGIS and the Army Corps of Engineers have just released new more accurate information gathered from 2009 LIDAR overflights. The data involved more than seven billion points of collection throughout Chatham County. Unfortunately what this new data reveals is a much greater impact of storm surge on Chatham County that has

ever been anticipated. The new category one storm surge data reveals water coverage previously anticipated during a category two storm. With the exception of the high ground in Thunderbolt, along Bull Street, White Bluff, Hunter Army Airfield and the Savannah International Airport, the category three surge is now forecast to cover almost the entire county. Category four and five surge does cover all but the highest ground in the county.

Finally, we've created Hurricane Evacuation Guidelines which are included in this newsletter. The Guidelines are intended to provide in general terms, the evacuation intentions under the various intensity storms. Based on the conditions given, such as an approach that is either direct or parallel to the coast, the actions will range from voluntary to mandatory evacuations in the time periods indicated. Our intention is to disseminate this information to as wide an audience as possible in order to keep our residents well prepared in anticipation of a possible evacuation.

Be safe and thanks for your commitment to the safety of our county.

*Clayton S. Scott,
Director*

2011 Chatham County Storm Surge Data

Along the coast, storm surge is often the greatest threat from a hurricane. It is primarily caused by extremely high winds as those winds push the ocean water on shore. As a result a huge wave is formed. Keep in mind though; storm surge is not a tidal wave or a tsunami which is caused by earthquakes or underwater volcanic activity.

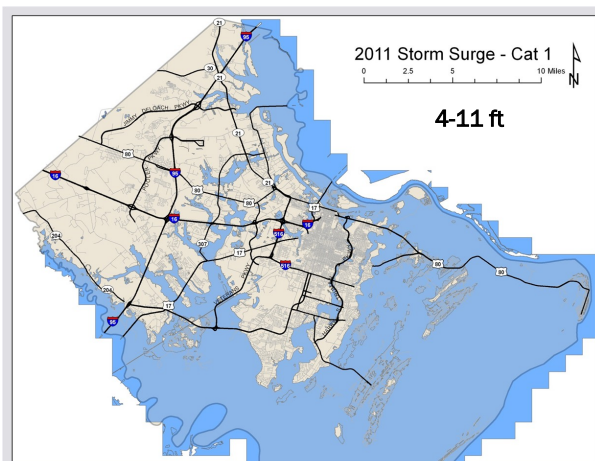
In 2005 Hurricane Katrina hit Louisiana. That storm is a prime example of the damage and devastation that can be caused by storm surge.

Chatham County values its coastal location and its historic structures. Because the area has not seen a

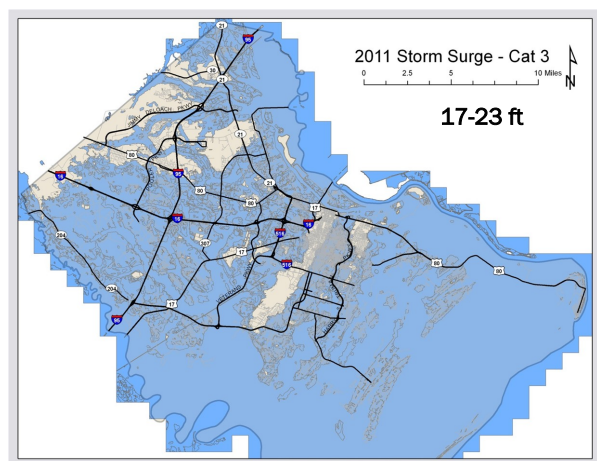
direct hit from a major hurricane in recent memory, there may be a tendency among residents to minimize the potential threat from storm surge.

This year the US Army Corps of Engineers released new storm surge data. The new data far better predicts storm surge impact, not because land elevation has changed, rather technology has improved. Airborne Light Detection and Ranging (LIDAR) is used to gather data. The original data was 1999 LIDAR with a 3m horizontal spacing and 12" vertical spacing; the current LIDAR is 1 ½ ft horizontal spacing and 3 ½ inches vertical spacing.

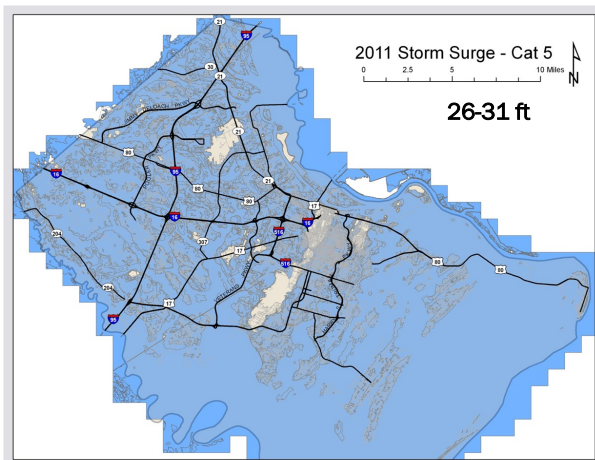
Cat 1



Cat 3



Cat 5



Storm Surge Levels

Category 1 Hurricane	4-11ft
Category 2 Hurricane	11-17ft
Category 3 Hurricane	17-23ft
Category 4 Hurricane	23-26ft
Category 5 Hurricane	26-31ft

2011 Chatham County Hurricane Conference Draws Record Attendance

Kelly Foster, Public Information Officer, CEMA

Our Hurricane Conference is a chance for emergency managers, first responders, planners and elected officials to come together and talk about hurricanes.

For the past 11 years, the Chatham Emergency Management Agency (CEMA) has hosted the Chatham County Hurricane Conference. Months of planning goes into the day-long event that is geared entirely towards emergency planning and response. The conference is strategically placed before the beginning of hurricane season and is designed to keep participants both informed and up to date on current hurricane related topics. While the conference specifically focuses on hurricane related subjects, many of the topics do cross over planning, response, and recovery issues brought by other hazards. "We can never take that time off and become complacent. We have to always be prepared," said Tybee Island Emergency Coordinator Jimmy Brown.

This year more than 350 people

attended the conference held at the International Trade and Convention Center on May 24, making it a record setting year in attendance. Chatham, Bryan and Effingham Counties as well as various municipalities had representatives at the conference. Workshops ranged from debris management, evacuation planning, pets management, to social media strategies.

"We can never take that time off and become complacent. We have to always be prepared." - Tybee Island Emergency Coordinator Jimmy Brown

This year two guest speakers kicked off the conference. Brock Long, Vice President of Hagerty Consulting also Former Director of Alabama Emergency Management Agency, and Commander Timothy Tobiasz, US Coast Guard Air Station Savannah.

"I get to see a lot of folks I have not seen in awhile. We're all busy individually with the way things are going, people are doing more and more with less. Having an opportunity like this, for one day to get together with people we need to talk to on a more regular basis, network, shake hands, say hi, remember names and faces; it's a good way to stay connected and being connected is what it's all about," said Chip Grefski with Chatham County Board of Education.

Mark your calendars for next year's Chatham County Hurricane Conference set for May 1, 2012 at the International Trade and Convention Center.



**CEMA DIR. CLAYTON SCOTT
& GULFSTREAM'S TOM MCILVAINE**



**GUEST SPEAKER BROCK LONG,
VP HAGERTY CONSULTING**

New Evacuation Guidelines

Chatham County

The longer a person has lived in a coastal area, the less likely it is that they will evacuate. A hurricane's path is difficult to predict and because hurricanes normally provide advance warning time compared to most disasters we experience, officials must make decisions in sometimes sunny weather conditions. If evacuation orders are given too early, the hurricane can change course and leave the evacuated area unscathed.

This year the Chatham Emergency Management Agency (CEMA) has developed new evacuation guidelines. New storm surge data and the plan to turn Interstate 16 contraflow (all lanes westbound) are some of the reasons

the guidelines were reworked.

For a Category 3 storm heading towards Chatham County a mandatory evacuation of the entire county would begin 30 hours from the forecast arrival of tropical storm force winds. Nursing homes and special needs resident evacuations will begin 48 hours out; voluntary evacuations of islands and low-lying areas may begin prior to the mandatory evacuation.

CEMA encourages Chatham County residents to leave early if an evacuation is issued. Individual prior planning can be extremely beneficial. Residents need to make sure they bring vital documents with them, including birth certificates, marriage licenses, wills, credit card information

and passports. They must also remember to bring medications. If residents have pets, they must bring provisions for them as well, including food, water and any medications the pet needs.

Technology makes it easier for people to bring photos and important documents. Pictures can be scanned and put directly on a thumb drive or laptop.

Residents should also bring an emergency supply kit when they evacuate: food, water, first aid kit, flashlights, extra batteries, pet food and pet supplies and other essentials.

STORM CATEGORY	EVACUATION ACTIONS								
	Tropical Storm Force Wind Arrival	VOLUNTARY South & East of Abercorn/US-204	MANDATORY South & East of Abercorn/US-204	MANDATORY Islands & Low-lying Areas	VOLUNTARY South & East of Abercorn/US-204	MANDATORY Remainder of County	MANDATORY East of I-95	MANDATORY Entire County	MANDATORY Entire County
Cat 5									30+48NH
Cat 4								30+48NH	
Cat 3							30+48NH		
Cat 2						24+30NH			
Cat 1 Direct					24+30NH				
Cat 1 Parallel to Coast				18+24NH					
Tropical Storm Direct			18+24NH						
Tropi Stm Parallel Coast		12							
Arrival Tropical Storm									

Islands and Low-lying Area Voluntary Evacuations Are 6 to 12 Hours Prior to Mandatory Evacuations
Hours for Evacuation + Added Hours for Nursing Home (NH) and Special Needs Evacuations

Evacuating Ahead of the Storm

Don Sullens, Emergency Management Specialist, CEMA

ESF 1: Transportation

For more than a decade, approaching hurricanes like Katrina, Gustav, Ike, and Floyd have required hundreds of thousands of people to evacuate the Gulf and Southeast Coasts of the United States.

Getting out of town. When an evacuation order is issued for Chatham County, residents and visitors are responsible for making personal transportation arrangements. These arrangements should include driving and/or making arrangements to ride with family members or friends.

If you can't find a ride. For those without transportation, Chatham County will provide transportation assistance using available public resources. When an evacuation order is issued for a major storm, the Chatham Emergency Management Agency (CEMA) coordinates the opening of the County's Evacuation Assembly Area (EAA) at the Savannah Civic Center 36 to 42 hours before the arrival of tropical storm force winds. Those in need of transportation can walk to or be dropped off at the EAA as well as ride a county bus. Chatham Area Transit (CAT) will provide free rides to the EAA from any established CAT bus stop.

For those with Functional and/or Special Needs. Most CAT buses and the Civic Center facilities are equipped to support those with limited functional needs. People who think they may qualify as Special Needs, should contact the Chatham County Public Health Department and apply for the Special Needs Registry. The Special Needs Registry assists the County in making additional transportation arrangements for qualifying citizens. For more information about Special Needs Registration, call (912) 356-2441.

What to bring with you. Each person is allowed to bring a maximum of two hand-carry bags. Make sure you bring any medications you are taking. There is no baggage assistance available at the Civic Center, and space on evacuation buses is limited. Mark your bags so they are easy to identify.



About pets. If you must evacuate, you should NOT leave your pets behind. If you're using public transportation, there will be arrangements made with the inland destinations to shelter animals; however, available space is extremely limited. With that in mind, do your best to make other arrangements for your pets and assemble a portable pet disaster supply kit. Keep the supplies in an accessible place and store them in a sturdy container that can be easily carried.

Your pet disaster supply kit should include:

- Medications, immunization records* and a first aid kit
- Carriers or cages to transport pets safely*
- Sturdy leashes*, muzzles, and/or harnesses
- Blankets or towels for bedding

and warmth

- Current photos of your pets in case they get separated from you
- Food and drinking water*
- Easily transportable pet toys and comfort items

*Required Items

Prepare yourself, it won't be a vacation. The availability of public transportation is not meant to be a convenient alternative for you and your family during an evacuation. Using public transportation is the means of last resort, your last choice. Prepare yourself and remember:

- You can take ONLY what you can carry
- Lines may be long and buses may not be immediately available (there will be a wait)
- It's going to be HOT
- Transportation services may not be air conditioned
- It will be a long and slow ride
- You are not going to a hotel
- Inland destinations will most likely be Public Shelters established in available facilities
- Personal space in the shelters may be limited to a cot and its immediate area
- After the event is over and safety issues have been mitigated, you will be provided return transportation only when local officials render the area safe and resources are available.

Even a small storm may result in widespread power outages lasting up to a week or more. A more serious storm may cause flooding, structural damage, power outages and loss of cell phone communications for some time. Shortages of food and drinkable water can also be expected. There are no public hurricane shelters in Chatham County. When evacuation is the best and the only recommended option, the County EAA will be ready.

Sittin' Around the Table

*Kate Underwood, Emergency Management Specialist, CEMA
ESF 5: Emergency Management*

Each year as hurricane season approaches the Chatham Emergency Management Agency (CEMA) works diligently to ensure that the plans in place will be exercised appropriately during a disaster. This year CEMA has taken a different approach to updating critical information related to hurricane season and the disasters that can occur with such a storm. Currently CEMA is working with each municipality to actually sit around the table and discuss actions each city would need to take before, during and after a storm and to make city leaders aware of CEMA's responsibilities.

A lot goes into making sure every government entity is aware of what the responsibilities are and to make

sure leaders are prepared to exercise those responsibilities. This year an abundance of information was updated due to changes in technology and an increased awareness of storm surge impact. A new storm surge map and new evacuation guidelines are crucial in gaining a more comprehensive overview of the evacuation actions for a hurricane.

Some of the information that has been updated is in the Disaster Recovery Plan regarding the Critical Facility Restoration Locations, the Road Clearing Priorities as well as the Re-Entry Strike Teams/Render Safe Teams. CEMA is also in the process of updating the Hurricane Evacuation Routes and Traffic

Control Points as well as the Emergency Fuel Management Plan within the Emergency Operations Plan. SAGIS (Savannah Area Geographic Information System) has been instrumental in helping CEMA update the maps associated with the Traffic Control Points and the Road Clearing Priorities as well as locations for Critical Facilities throughout Chatham County. We would like to thank each municipality for being eager to sit down with the CEMA staff and make the necessary changes to have a plan in place that we feel comfortable and confident with.

See the CEMA website, www.ChathamEmergency.org, for the most recent information and changes to CEMA's Emergency Operations Plan.



Left: CEMA discusses hurricane plans with City Officials from Pooler.

Special Medical Needs Registry

Sally Silbermann, Public Information Officer, Coastal Health District

ESF-8: Health & Medical

The Chatham County Health Department maintains a Special Medical Needs Registry which is made up of residents who may require transport and medical assistance during a hurricane evacuation and do not have a caregiver who can help them. Residents must apply to be on the registry. The Registry is provided to the Chatham Emergency Management Agency (CEMA). The

"While the Special Medical Needs Registry is a good tool to help us know where our most vulnerable residents are, it should always be a last resort..."

Registry is truly a last resort, but if a hurricane is threatening our area, it is important CEMA and Health Department officials know where the most vulnerable residents are located so that evacuation assistance can be provided to them.

To register, call the Chatham County Health Department at (912) 356-2441. Once you provide your mailing information, you will be sent a special medical needs enrollment form to complete and return to the Health Department. The application can also be downloaded from the Coastal Health District website at: www.gachd.org/emergency-preparedness. When the form has been completed, it can be mailed to:

Chatham County Health Department
Attn: Special Needs Coordinator
1395 Eisenhower Drive
Savannah, GA 31406

It is important to note that people living in nursing homes, assisted living facilities, and personal care homes are not eligible for the Special Medical Needs Registry and must follow their facility's emergency plan.

How the Special Medical Needs Registry Works

Special medical needs persons are categorized into five levels. If you meet the criteria for levels one or two, you are not eligible for the Special Medical Needs Registry. If you meet the criteria for levels three, four, or five, your name will be entered into the Special Medical Needs Registry. The Health Department will assess eligibility and notify residents approved to be on the registry.

For more information on the Special Medical Needs Registry, go to www.gachd.org and click on the Emergency Preparedness tab at the top of the home page.



Don't Change that Channel

Pete Nichols, Public Information Officer, Chatham County

ESF-15: External Affairs

Chatham County has a new way to showcase some of the latest and greatest. The County has created a YouTube Channel in hopes of giving people the chance to gain an inside look at some of the events and important projects that impact residents. The Chatham Emergency Management Agency (CEMA) will also use this channel to distribute important information regarding safety for residents and people who visit the area. If an emergency threatens the County, CEMA will use this channel as an additional tool to disseminate public information.

You can find the channel at YouTube.com, search for ChathamGA.

WWW.YOUTUBE.COM/CHATHAMGA

Assessing the Damage

*Dennis Jones, Deputy Director, CEMA
ESF 3: Damage Assessment*

Following any natural and/or manmade event that leaves a path of destruction and/or piles of debris in its wake, the first step to recovery is to assess the damage. Damage Assessment (DA) information is collected from a variety of sources including emergency services dispatch centers (Police and Fire), local Public Works Offices, utility providers, the local news media, social media (Facebook and Twitter), and directly from citizens. There may be times when trained DA Teams will be required to conduct on scene assessments in order to obtain complete and accurate information.

Gathering, compiling, and reporting accurate DA information in a timely manner is a critical task for local jurisdictions. Communities with established DA Plans are prepared to provide the information needed to quickly receive recovery assistance and support through established mutual aid agreements and from State and Federal resources. These communities are also well positioned to receive the full level of financial assistance available

from FEMA and other participating entities.

The Chatham Emergency Management Agency (CEMA), Chatham County Tax Assessor's Office and Chatham County Building Safety and Regulatory Services have partnered together to develop Rapid Assessment Teams. These teams are designed to deploy immediately following an emergency or disaster to conduct an initial assessment of event related damages in the impacted area. Information is provided to the CEMA Duty Officer and the Emergency Operations Center for evaluation in determining the issuance of a Local State of Emergency and if the event warrants the request for State assets to assist with recovery. Standard Operating Procedures are currently under development. The Rapid Assessment Teams are open to other partners and volunteers who would like to participate or implement similar programs in other jurisdictions. For more information on the Rapid Assessment Teams, contact Gregori Anderson at (912) 201-4320.



Left: Tornado damage in Troup County, GA - April, 2011. (Photo taken by Kate Underwood, CEMA)

How Crucial is the CWF?

ESF 6: Mass Care

During periods of hurricane threats, it's important for a community to respond and recover as quickly as possible. How that is accomplished relies on a careful selection of staff and resources. The personnel designated to perform these tasks are referred to as Critical Workforce (CWF). During disaster operations, CWF is required to shelter locally and provide immediate response to the County to perform render safe tasks and begin restoration of critical infrastructure systems. CEMA has arranged CWF sheltering and staging locations at six locations throughout the County for a Category 1 and 2 Hurricane.

- **Hunter Army Airfield**
- **Savannah / Hilton Head International Airport**
- **Godley Station School**
- **West Chatham Elementary School**
- **West Chatham Middle School**
- **Savannah Morning News Building (EOC Staff Only)**

For Category 3 and higher hurricane threats, CEMA and the remainder of the CWF will evacuate to the campus of Georgia Southern University in Statesboro. CEMA maintains a registry of all CWF and equipment at each location. This information is updated annually with support from emergency management partners.

WebEOC Byte**ESF 5: Emergency Management**

WebEOC is a web-based information management system that provides a single access point for the collection and dissemination of emergency or event-related information.

The Chatham Emergency Management Agency (CEMA) utilizes WebEOC to share real-time information before, during and after an event or emergency. WebEOC is used in the County Emergency Operations Center (EOC) to coordinate assets and resources.

Here are some great little bits of information to use when working in the WebEOC.

1. If you need to duplicate ALL the information that is in a Notes, Remarks, Comments, Address or any field that you have access to update/change, all you need to do is:
 - a. Click on the inside of the text box that has the data you want to copy.
 - b. Hold down the Ctrl Key on the keyboard and click A. This selects ALL data in that field.
 - c. Hold down the Ctrl Key on the keyboard and click C. This copies the selected data.
 - d. Navigate to the desired board you need to paste this data into.
 - e. Mouse over and click on the field you want to add information in.
 - f. Hold down the Ctrl Key and click V. This paste all the data selected.

- g. These key combinations of Ctrl A, C & V work in other Windows programs as well, speeding up typing in Word, Excel and Powerpoint.

2.

Requesting Assistance Using the Position Log.

- a. Be very detailed in the Description field. Do not just say, need two cops.
 - i. Example: Two police officers are needed to help traffic control at the intersection of Abercorn and Whitebluff. The Public Works folks will be clearing debris from the large trees that are down and could take longer than eight hours to fully clear streets.
 - ii. DO NOT forget to put the check mark in the box in the upper LEFT corner that says "Assistance Request". If you do not check mark this, your request will not be sent.
 - iii. If it is not an immediate need and can be scheduled, click on the calendar next to the "Date/Time Required" field and select a date that assistance is needed on. You can also modify the time by clicking on the time and typing in MILITARY time the time that is needed. Example: 07/21/2011 14:00:00.

Monthly WebEOC Log-on**ESF-5: Emergency Management**

In March we began an initiative to have all WebEOC users sign in on a monthly basis. Because we do not use the system that often and when we do, it is typically in a stressful environment, we wanted users to get in the habit of logging in and remembering their username and password. This process takes about three minutes and has proven to be very helpful! During the last EOC exercise, we only had to help one user with remembering her password. Kudos to EOC Staff Members!

Every month we do have some challenges, especially as it relates to logging in remotely through the VPN. We have tried to include some troubleshooting hints in the monthly email reminder and instructions on logging in from a county network as well as a non-county network. We would rather troubleshoot these issues before an emergency than during, so if you have any questions, please don't hesitate to give Dustin Hetzel or Jennifer Rodriguez a call or send an email.



It's a Bird. No, It's a Plane. It's an EOC Drill

Jennifer Rodriguez, Emergency Management Specialist, CEMA

ESF 5: Emergency Management

On June, 28 EOC Staff members came together to respond to a simulated plane crash in a West Chatham neighborhood. This was the first of a series of quarterly exercises to get EOC Staff members more familiar with their roles and responsibilities within the EOC and using WebEOC. This hands on training provided participants the ability to work in an activated EOC, without the high stress of an actual disaster. Several people used this as an opportunity to try their hand at roles they would not typically hold and get training in the roles and responsibilities of these positions. Nearly 40 people participated in the EOC Drill and filled roles such as EOC Manager, EOC Public Information, Phone Operations, Planning Section Chief and other planning positions, Operations Section Chief and other operations positions, and Logistics Section Chief.

The most significant comment in the After Action Review was having the opportunity to participate in the training was appreciated and much more training like this is needed. We are working to find a good balance of how to train and provide training on the EOC, without overburdening EOC Staff Members with already full plates. We will be repeating this scenario on September 8th to further enhance staff members experience within the EOC.



Right: Exercise participants test their response during a simulated plane crash. EOC, Old Courthouse, Downtown Savannah.

On the Fire Line

*Assistant Chief Hugh Futrell, Fire Operations, Southside Fire/EMS/Security
ESF 4: Firefighting*

This summer has been busy for ESF 4. As most Chatham County residents can attest, the smoke from the wildfires in South Georgia has been intense at times. ESF 4 has deployed firefighting resources at the request of CEMA and the Georgia Emergency Management Agency for both the Long County fires and the Charlton County fires. Our task forces were sent to provide relief for weary firefighters and to provide structure protection. Hopefully, the US Forestry and the GA Forestry can get the fires in the wildlife management areas under control soon so we all can, literally, breathe a little easier.

In local news, ESF 4 has been participating in CEMA's Emergency Operations Center exercises to improve disaster response for the firefighting community. The Chatham County Fire Chiefs' Association has

been working towards a more universal mutual-aid agreement for all fire departments in the County. Several fire services in Chatham already subscribe to the Georgia Mutual Aid Group (GMAG). There is



no charge for this and ESF 4 and local Fire Chiefs receive direct communication from the State when resources are requested in other areas. GMAG members may also direct requests to the State as well.

Also a US Coast Guard exercise was held in July to practice for a marine hazardous material disaster. Several of our local ESF 4 partners participated in this exercise.

Lastly, fire departments in Chatham have been reviewing their hurricane and disaster plans, just in case. All citizens should be aware that at consistent gale force winds (> 39 mph) firefighters and fire vehicles typically will remain in quarters as the danger from flying debris is too great for safe driving. This simply means that if an evacuation is issued and you don't leave, there is a high probability that emergency services may not be able to get to you; considering the flood prone areas throughout Chatham, it may not be just the winds that prevent access.

Stay alert, stay safe and remember smoke detectors save lives.

Hazard Mitigation Mapping

*Dave Grottyhann, Emergency Management Specialist, CEMA
ESF 14: Recovery and Mitigation*

The Hazard Mitigation Division of GEMA and the University of Georgia have developed an on-line mapping tool called the Georgia Mitigation Information System (GMIS). GMIS supports the documentation and implementation of mitigation activities across the State of Georgia through mapping and reporting of Critical Facilities, Mitigated Properties, and National Flood Insurance Program (NFIP) Properties. Currently, critical facilities information is available for querying, information gathering, and reporting.

To meet the Disaster Mitigation Act of 2000 (DMA2K) planning

requirements, local governments need to collect detailed structure and building information. This system will enable CEMA to enter information about Chatham County facilities, including coordinates, replacement value, critical facility type, occupancy code, etc. These facilities can then be reported by the hazard zones they fall within. For example, a report is created at the click of a button that shows all facilities that fall within the 100 year floodplain. These reports, along with custom hazard maps, can be imported directly into the Chatham County Hazard Mitigation.

As part of the planning process, we

are required to include the critical facilities inventory in the County plan document. This is a two part process. One part is to include a copy of the maps created on the GMIS system which will be coordinated by the Metropolitan Planning Commission. The second part is to include the critical facilities report, also created on the GMIS system, which is currently being compiled by CEMA. We have 730 critical facilities that have been identified and loaded into the GEMA input spreadsheet. This project is progressing and each facility is currently being coded per the guidelines.

Hazmat Ordinance Changes

ESF 10: Hazardous Materials



On July 22, 2011, the Chatham County Commission approved changes to two County ordinances governing hazardous materials (hazmat). These changes were initiated through the Local Emergency Planning Committee (LEPC) and endorsed by CEMA, the Building Safety and Regulatory Services Department and the County Attorney's Office. The changes have been approved to the ordinance requiring the "Report of Spill or Release of Hazardous Substances and Oil" (Chapter 21, Article VIII) and the ordinance requiring the "Payment of Registration Fee by Facilities with Hazardous Substances" (Chapter 21, Article X). The amendments are listed below for each ordinance.

The Board of Commissioners of Chatham County do hereby amend the Code of Chatham County as it relates to Chapter 21, Health, Safety and Sanitation, Article VIII, Report of Spill or

Release of Hazardous Substances and Oil, so as to amend said Ordinance to delete in its entirety Section 21-801(2) and substitute in lieu thereof a new section 21-801(2) that reads as follows:

"This Ordinance is adopted into the Code of Chatham County pursuant to the powers granted Chatham County as a political subdivision of the State of Georgia, and as part of its strategy for emergency management plan pursuant to O.C.G.A. §§ 38-3-27, 38-3-28 and 38-3-52 to require prompt reporting of a reportable quantity of a spill or release of any hazardous substance or oil which is known to have or suspected to have left the boundaries of the facility where stored and used. The requirement pursuant to this Ordinance is to assist Chatham County in ensuring the health, safety and welfare of its citizens and derive the necessary knowledge and information needed of potentially hazardous substances in Chatham County and to develop an emergency management plan and response."

The Code of Chatham County,

Chapter 21, Health, Safety and Sanitation, Article X, Payment of Registration Fee by Facilities with Hazardous Substances, Section 21-1004 of the Code of Chatham County is hereby amended so as to add an additional paragraph to the end of the last paragraph of Section 21-1004 so as to read as follows:

"The failure of any person to register or to pay the hazardous substance fee by not later than May 1st of each year shall result in the requirement of payment of the original fee due plus a 25% delinquency fee increase of the amount which would have been due if timely paid, said delinquency fee amount not to exceed \$1,000. Failure to pay timely the registration fee or delinquency fee shall be enforceable in the Recorder's Court of Chatham County."

All other provisions of the Code of Chatham County as related to Chapter 21, Health, Safety and Sanitation, Article, VIII and Article X shall remain in full force and effect.

"Hello, Can you Hear Me Now?"

ESF 5: Emergency Management

"This is an automated phone call from Chatham County Emergency Management Agency." This is the first thing that is heard when CEMA calls the Emergency Operation Center's Staff. At this point, your heart starts racing because you are probably waiting on the next sentence from the system. You are hoping to hear "This is a monthly test message..." and not "The Emergency Operations Center is now at a Level one activation".

Monthly Community Notification System tests allow CEMA to

accomplish two things. First, it helps CEMA keep an updated phone number list to call the Primary, Secondary and Tertiary EOC Staff to ensure that when there is an emergency in the middle of the night, and there is a need to activate the EOC, we can reach out and call the staffing agencies very quickly. The system logs each phone call and if a phone number fails, it allows us to follow up with the staffing agency about the failed phone call. Second, it is a simple reminder for EOC Staff to login monthly to the WebEOC and do

quick familiarities check of their WebEOC position.

As you listen to the system, you can press the number three (3) key on your phone to acknowledge that you received the message. You can simply hang up the phone after pressing the three (3) key or you can continue on with the message through the end.



NIMSCAST—Don't Groan Too Loud!

*Jennifer Rodriguez, Emergency Management Specialist, CEMA
ESF 5: Emergency Management*

NIMS (National Incident Management System) compliance is a term used to describe progress being made by an agency or a jurisdiction to address the NIMS implementation objectives for a given year. Each federal fiscal year since 2005, the National Integration Center, a department within FEMA, has published implementation requirements and guidelines for federal, state, local and tribal entities and jurisdictions. There are implementation activities relating to each of the NIMS components. HSPD-5 requires that federal agencies tie preparedness funding eligibility directly to progress on NIMS implementation. Inability to demonstrate compliance affects federal preparedness funding eligibility even at the local level.

NIMSCAST (NIMS Compliance Assistance Support Tool) is the mechanism for tracking and reporting NIMS implementation progress. The purpose of NIMSCAST is to report the progress by jurisdiction. In Georgia, counties are responsible for collecting the information and then reporting to the state. This must be done by the end of September.

Most of the objectives in regard to the training element

continue to remain the same as prior years; however, this year we must also begin to report on FEMA Independent Study Courses: IS-701, 702, 703, and 704.

A significant addition to NIMSCAST reporting this year is Resource Typing and asset inventory management. Credentialing is also being introduced this year, leading us to the future of what will be required.

By now a survey should have gone out to the Directors/Chiefs of Police, Fire, and Public Works to begin the process of acquiring information on the training reporting requirements. Please fill this out, if you have not already done so and return. This is a federal and state requirement that we must meet.

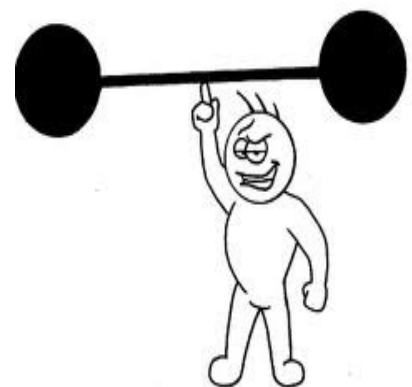
If you have any questions on NIMS compliance or NIMSCAST, please call Jennifer Rodriguez, EM Coordinator.

VISIT

WWW.CHATHAMEMERGENCY.ORG
FOR A LINK TO THE FEMA
INDEPENDENT COURSES.

Daily Exercise Regimen

Doctors tell us that daily exercise is good for us. In emergency management, exercises take its toll on personnel, productivity, equipment, and payroll. We all want to be good team players and help out; however, at times our own training objectives are not even being met with all the exercises. During 2012, we are working with the Georgia Emergency Management Agency to help develop a consolidated training regimen that will enable all partners to meet exercise and training objectives without causing a burden to our agencies. Stay tuned and start thinking about any objectives you would like to exercise during the next year.



Dealing With Donated Goods

Don Sullens, Emergency Management Specialist, CEMA
ESF 7: Logistics

It doesn't matter if it's flooding along the Mississippi, hurricanes along the Gulf Coast, an earthquake in Haiti, famine in Africa, or a Tsunami in Japan; the United States Government and its people have a tradition of stepping up to do

unsolicited help sent to disaster stricken populations by private citizens and organizations is documented and reported in the media during every peacetime disaster.

The material value and physiological support provided by these donations to the people affected cannot be underestimated. However, it has been recognized since the 1950's this spontaneous generosity often has unanticipated negative consequences.

Managing donated goods is very labor intensive and requires facilities with a lot of space. The ideal facility for dealing with donations is a large commercial warehouse. Warehouses typically are equipped with loading docks and organized to accept and handle large quantities of bulk items. The enormous open

space of the typical warehouse provides sufficient sheltering (out of the weather) to process/sort and store the donated goods.

Jurisdictional emergency plans must include procedures designed to deal with unsolicited donated goods. Plans may include establishing collection points where items are accepted, sorted, and inventoried before being sent on to fill an identified need. Items not needed immediately may be placed in storage for future use. Facilities and supporting staff must be identified prior to being needed.

Despite the good intentions, without a management plan the sheer volume of unsolicited donated goods may overwhelm our emergency responders and create "a disaster within the disaster".

"It has been recognized since the 1950's this spontaneous generosity often has unanticipated negative consequences."

whatever is needed to provide relief to those suffering. In addition to the millions of dollars and tons of supplies provided officially, spontaneous outpourings of

When in Doubt, Throw it Out!

Sally Silbermann, Public Information Officer, Chatham County Health Department
ESF 11: Food and Water



Coastal Georgia is prone to powerful storms at any time, but particularly between June and November when hurricane season is in full swing. Lighting, wind, and water can all cause power outages and if the power goes out, one thing that should be taken into consideration is food consumption and disposal.

The Environmental Health Division of the Chatham County Health

Department wants county residents to follow the proper precautions when it comes to power outages and food.

If the power is out for less than two hours, then the food in your refrigerator and freezer should be safe to consume. While the power is out, keep the refrigerator and freezer doors closed as much as possible to keep food cold for longer.

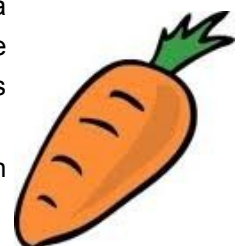
If the power is out for longer than two hours, follow the guidelines below:

- For the Freezer section: A freezer that is half full will hold food safely for up to 24 hours. A full freezer

will hold food safely for 48 hours. Do not open the freezer door if you can avoid it. If food is partially thawed and below 40 degrees Fahrenheit, continue to thaw in the refrigerator and then cook immediately.

- For the Refrigerated section: Use a food thermometer to check the temperature of your food. Throw away any food that has a temperature of more than 40 degrees Fahrenheit.

Remember, if in doubt, throw it out!



SHER the Knowledge

Dave Grotyohann, Emergency Management Specialist, CEMA

ESF 11: Natural, Cultural and Historical Resources

The mission of the Natural and Cultural Resources and Historic Properties (NCH) part of ESF-11 is to manage and coordinate appropriate response actions to protect, conserve, rehabilitate, recover, and restore NCH resources, and to provide personnel, equipment, and supplies in support of Federal, State, and local agencies involved in NCH resources protection efforts.

The local group responsible for the NCH mission is the Savannah Heritage Emergency Response (SHER) organization. Their primary objectives are:

- Preservation of History,
- Build a local team of facilities staff, emergency/damage assessment/recovery responders,
- Integrate NCH Sites into the GIS Maps for Chatham County Emergency Preparedness
- Recovery Operations following a disaster
- Facilities Vulnerability Analysis
- Continuity of Operations (COOP)

SHER Accomplishments

- Implemented the SHER Website and Public Relations Materials
- Identified 47 member Institutions within the County

Of these 10 have sent in their 2011 forms and in addition, 9 more are up-to date through 2010

- Created a critical facilities assessment application form for registration
- Conducted Risk/Vulnerability Assessment Training,
- Identified 17 Institutions requesting Base Camp services to include Freezing and Recovery
- Qualified volunteers to staff the CEMA EOC ESF-11 desk
- Developed a relationship with disaster/re-entry assessment teams

The SHER Training & Education Committee recently distributed a Training Interest Survey to our local institutions. The main focus is on the development of institution specific presentations to give an overview of their facility, prioritize their collections, and point out concerns the institution might want to share with their fire department. It also addresses the need to schedule routine meetings, training, COOP Planning, local hazards, and back-up repositories.

[HTTP://SHERONLINE.INFO/](http://SHERONLINE.INFO/)

Did you know that after Hurricane Katrina....

- ◆ An estimated 600,000 pets were killed or left without shelter.
- ◆ Approximately 8,000 animals were rescued and brought to temporary shelters.
- ◆ Most of the 10,000 fish at the New Orleans Aquarium of the Americas died because the backup power ran out after four days.
- ◆ The Audubon Zoo lost only three animals out of a total of 1,400 due to good disaster planning and location on high ground.
- ◆ US Representative Tom Lantos (D-California) introduced the Pets Evacuation and Transportation Standards Act to the House of Representatives requiring states seeking FEMA assistance to accommodate pets and service animals in their plans for evacuating residents facing disasters. The bill passed on May 22, 2006 with an overwhelming majority.

Don't Leave Home Without Them

ESF 11: Pets and Animals

The Chatham Emergency Management Agency (CEMA) is currently working with ESF 11 partners to finalize the Standard Operating Procedures for the Evacuation Assembly Area at the Savannah Civic Center during an evacuation for a hurricane. CEMA plans to host a meeting in August to wrap this up. CEMA understands the importance of pet safety and the fact that residents most likely will not leave town without their pets. All pets must be properly controlled and pet owners must have their pet's records. CEMA is also working to have the American Red Cross involved in the registration process, as well as training some of the Community Emergency Response Team volunteers in pet handling so that they will be able to assist during the registration process at the Civic Center.

Utility Safety: Call Before you Dig*ESF 12: Utilities*

In many areas, electrical and communications lines are buried in the ground along with natural gas and water pipes. Several times each month, potentially hazardous situations are created when people start digging without doing their homework and come into contact with these underground utilities. Accidental contact with overhead high voltage electrical lines can also create dangerous situations for contractors and home owners.

Before you dig or excavate with mechanized equipment on your property, the Georgia "Call Before You Dig" law requires you to notify all utilities at least 48 hours in advance (*This excludes the day of the call, weekends and holidays*). This allows professionals to locate and clearly mark underground lines in order to help you avoid accidentally cutting utility lines. In addition to marking the underground utility lines, overhead high voltage electrical line safeguards are also available. These services are free!

Besides being extremely dangerous for you, the accidental contact with or cutting of utility lines can cause power outages, water main floods and gas leaks. For more information, visit www.gaupc.com.

**SEGARRN: The More the Merrier***Nick Batey, Chief Technical Manager, ICS**ESF 2: Communications*

The Southeast Georgia Regional Radio Network (SEGARRN) has gained a new member, Long County. As more and more members join the network, our footprint expands to allow those Counties the opportunity to utilize the radio system for coordinating multi-county efforts. Please visit the SEGARRN website to see a full list of participating jurisdictions:

<http://segarrn.chathamcounty.org>

A system wide Interoperability Training document is now available. We encourage any SEGARRN members to urge their local agency trainer to get trained and pass on the knowledge. The Chatham Emergency Management Agency is here to assist in any way possible. Please refer to the SEGARRN website for more information.

The Administrator for SEGARRN has issued a recommendation on any new radio purchases. Based on a State of Georgia requirement, the TDMA features available in the new line of APX model Motorola radios will be needed as of 2017. To help with meeting the requirements, all new radio purchases should be from the APX series.

[HTTP://SEGARRN.CHATHAMCOUNTY.ORG](http://SEGARRN.CHATHAMCOUNTY.ORG)



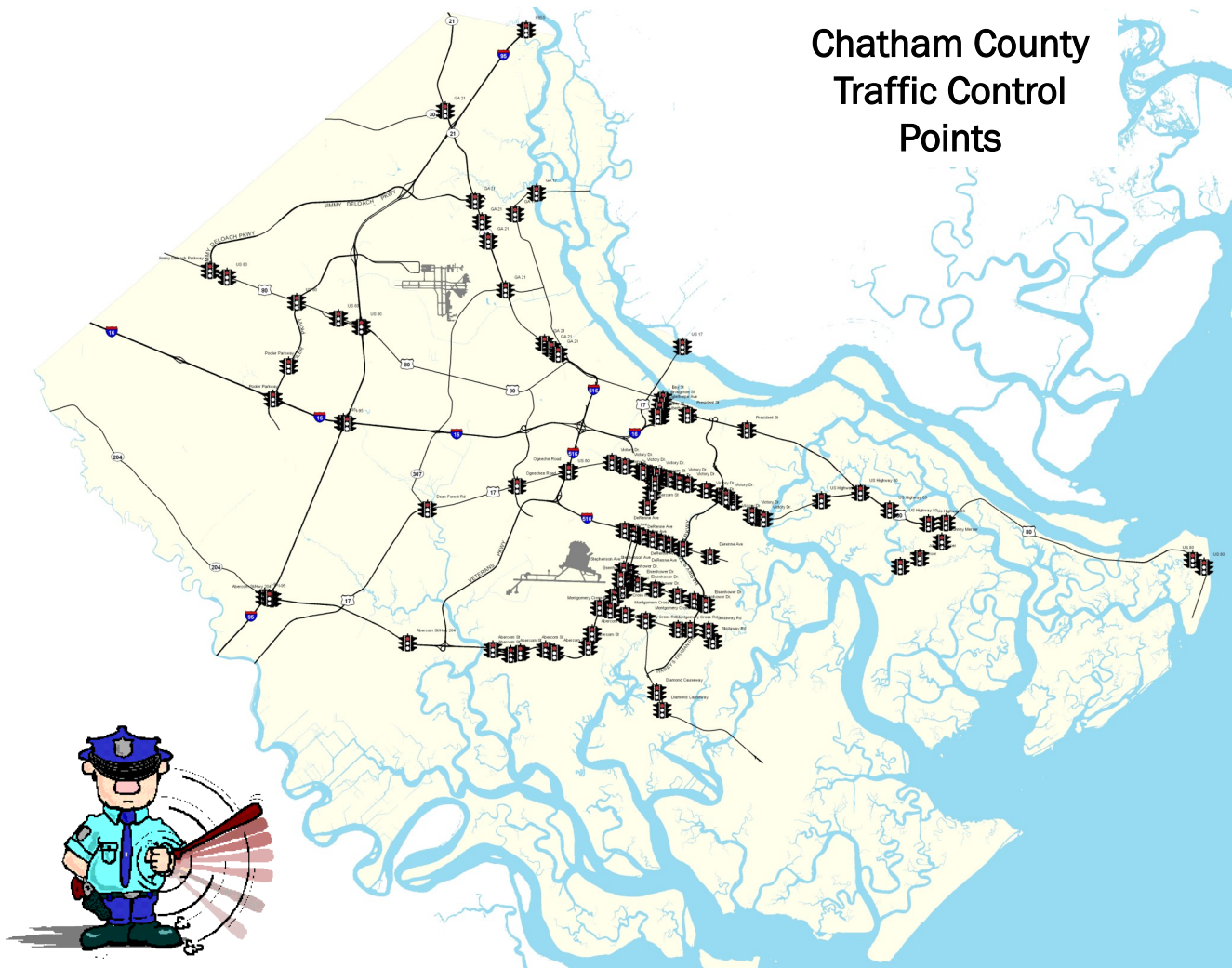
Mind the Gap

*Dustin Hetzel, Emergency Management Specialist, CEMA
ESF 13: Law Enforcement*

This 2011 Hurricane Season, the Chatham Emergency Management Agency (CEMA) met with Emergency Management Program partners to discuss evacuation Traffic Control Points (TCP). From these meetings, partners verified intersections throughout the County that most likely would require a law enforcement presence during an evacuation to ensure the orderly flow of traffic over the evacuation period. The verified locations are recorded in a table and plotted on a map. As part of the verification process, 12 hour staffing levels were also evaluated for each location and compared to the staffing ability of each jurisdiction. The result of the comparison identifies a gap in staffing.

For example: The municipality FAKE-TOWN has 15 TCPs. Each of these 15 TCPs requires two people per 12-hour shift to ensure traffic flow and staff safety. This results in a TCP staffing need of 30 persons every 12-hour shift. If FAKE-TOWN can only dedicate 6 people per 12-hour period, the comparison tells us we have a gap of 24 people for those TCPs. For planning purposes, we are aware that staffing resources will be required in FAKE-TOWN to manage the evacuation process efficiently and safely. Augmentation from external entities will be coordinated through the Chatham Emergency Operations Center and requests routed to the State Operations Center.

Chatham County Traffic Control Points



HAT in Savannah

Savannah Hilton Head International Airport

Hundreds of students got the chance to step aboard an airplane that flies into one of Mother Nature's most powerful storms.

The National Weather Service's annual Hurricane Awareness Tour rolled into town on May 5, 2011 at the Savannah Hilton Head International Airport. Area students from Chatham, Effingham and Bryan Counties, as well as students from South Carolina were able to tour the airplane and talk with the pilots and crew.

The highlight of the tour was the Lockheed WP-3D Orion, NOAA's Hurricane Hunter aircraft. The event was hosted by both NOAA's National Weather Service Office in Charleston, South Carolina and the Savannah Hilton Head Airport, in conjunction with the NOAA's National Hurricane Center out of Miami Florida, NOAA's Airport Operations Center at MacDill Air Force Base located in Tampa, Florida, and CEMA. The P-3 Orion aircraft not only plays a vital role in helping NOAA's National Hurricane Center forecast the track and strength of hurricanes, but also participates in many other national and international research missions.

Bill Reed, Director of the National Hurricane Center; Charlie English, Director of Georgia Emergency Management Agency; Clayton Scott, Director of Chatham Emergency Management Agency and Jim Anderson; Director of Bryan County Emergency Management Agency attended the event.



Right: (Top) Hurricane Hunter parked on tarmac. (Middle) Crewmember holds a dropsonde, which is an instrument that gathers hurricane data. (Bottom) Stickers on the side of the airplane. Each one represents a hurricane the plane has flown through.



Lost in Wormsloe!

Kevin Strickland, Southside Fire/EMS, CEMA SAR Team Captain

ESF 9: Search and Rescue

Despite the hot summer days, the Chatham Emergency Management Agency (CEMA) Search and Rescue (SAR) Team hit the woods. In July, with the full cooperation of Park Rangers, the team went on a training search at Wormsloe State Park. The team searched for a missing teddy bear placed in the woods and in less than three hours, located the missing bear.

The exercise was the culmination of months of training and preparation done by team members, who participate in training each month. Team members recently established a "Day Pack" list of essential items needed for day searches and are using new map marking skills that help expedite the actual search process. Skills refreshed during the exercise included map assembly, marking, orientation, LAT LONG reading, Command and Control, trail search with foot print identification and tracking, as well as interviewing witnesses and inter-organizational cooperation.

In August the team will be back in the classroom for updates and additional training. In September the CEMA SAR team will be doing an urban search in the Downtown Savannah area.

The CEMA SAR team relies on ongoing training to prepare for when a real search happens.

**IF YOU ARE INTERESTED IN JOINING
THE CEMA SAR TEAM PLEASE CALL
912-201-4500. THE TEAM IS MADE
UP OF ALL VOLUNTEERS AND IS
ACTIVATED WHEN LOCAL LAW
ENFORCEMENT AGENCIES REQUEST
ASSISTANCE IN LOCATING MISSING
PERSONS.**



CEMA SAR TEAM

WORMSLOE STATE PARK (JULY 23, 2011)



MISSING TEDDY BEAR

WORMSLOE STATE PARK (JULY 23, 2011)

Home Depot Hurricane Expo 2011 Abercorn Street, Savannah



Above: Dave Grotyohann, CEMA, quizzes a resident on ways to prepare for a hurricane.



Above: Mitchell Bush and the Nationwide team distribute fire extinguishers to local residents.

Hundreds of Chatham County residents attended the recent Home Depot Hurricane Expo. The event was held at the Abercorn Home Depot in Savannah on

June 4th, 2011. The expo was hosted by the Georgia Insurance Commissioner, Ralph Hudgens and designed to prepare residents for hurricane season.

Spotlight Don Sullens



Don Sullens joined the Chatham Emergency Management Agency (CEMA) in 2007. His current responsibilities as an Emergency Management Specialist include coordinating County-wide emergency planning and operations for Transportation, Evacuations and Re-entry, Damage Assessments, Debris Management, and Resources and Logistics.

Mr. Sullens is a retired US Army Chief Warrant Officer. His 23 year military career included assignments with: V & VII US Corps in Europe, 1st Ranger Battalion here in Savannah, 75th Ranger Regiment at Fort Benning, 82nd Airborne Division at Ft. Bragg, NC, and 3rd Infantry Division at Ft. Stewart.

Prior to joining CEMA, Mr. Sullens served with the Chatham County Police and Savannah Chatham Metropolitan Police Departments. Mr. Sullens is married to Theresa Long of Savannah and they have three children.

Mr. Sullens is a Georgia POST Certified Police Officer and Georgia Certified Emergency Manager.

LOL!

Top 10 Reasons Hurricane Season is Like Christmas

10. Decorating the house (boarding up windows).
9. Dragging out boxes that haven't been used since last season.
8. Last minute shopping in crowded stores.
7. Regular TV shows pre-empted for "specials".
6. Family coming to stay with you.
5. Family and friends from out-of-state calling.
4. Buying food you don't normally buy...and in large quantities.
3. Days off from work.
2. Candles.
1. And the number one reason hurricane season is like Christmas...at some point you know you're going to have a tree in your house!



Michigan Hurricane Damage

Are You Ready?

Are you ready to go? That's a question you need to answer before a hurricane threatens Chatham County. If an evacuation is issued and you must leave, there are important documents you need to take with you. Use the list below to help you in your planning.

VITAL DOCUMENTS (In a To-Go Box)

- ☐ Shot records for all family members (including pets)
- ☐ Medical & Dental records
- ☐ Copies of all prescriptions
- ☐ Bank account & safe deposit box information
- ☐ Monthly bill information and addresses
- ☐ Pay check information and addresses/phone numbers
- ☐ Vehicle and insurance documentation
- ☐ Marriage certificate
- ☐ Birth certificates for all family members
- ☐ Citizenship papers
- ☐ Adoption papers
- ☐ Passports with any required visas
- ☐ List of social security numbers for family members
- ☐ Powers of Attorney
- ☐ State and Federal Tax records
- ☐ Wills
- ☐ Insurance policies
- ☐ List of immediate family addresses & phone numbers
- ☐ Court orders: divorce, child support, child custody, etc.
- ☐ Real estate documents, e.g. leases, deeds, & mortgages
- ☐ Copies of any installment contracts (car, furniture, etc.)
- ☐ Pet records and supplies



WHEN A WATCH IS POSTED

When a Hurricane Watch is issued conditions pose a possible threat to a specific area within 48 hours.

WHEN A WARNING IS POSTED

When a Hurricane Warning is issued, winds of 74 mph or higher are expected to affect a specified area within 36 hours. This Warning is the signal to take immediate action to prepare for the full impact of a hurricane. The consequences for coastal communities could be devastating if proper emergency actions are not taken.

KNOW THE LINGO

KNOW THE LINGO

CALENDAR

Page 23

Meetings

August 3, 1:30PM—3PM ESF 6 & 8

CC Health Dept. Training Room
Todd Jones
(912) 356-2160
ctjones2@thr.state.ga.us

August 4, 10:30AM—12PM EAA Concept of Operations Briefing

CEMA Annex EOC
Must Pre-register
Don Sullens
(912) 201-4500
dwsullens@chathamcounty.org

August 25, 8:30AM—9:30AM CLEO (ESF-13)

Weston House Residence Hall
Wynn Sullivan, Armstrong PD
(912) 344-3222
Wynn.Sullivan@armstrong.edu

August 30, 10:30AM—12PM Transportation Group (ESF-1)

CEMA Annex EOC
Don Sullens
(912) 201-4500
dwsullens@chathamcounty.org

August 31, 10:30AM—12PM Damage Assessment Workgroup (ESF-3)

CEMA Annex EOC
Don Sullens
(912) 201-4500
dwsullens@chathamcounty.org

August, TBD

Pets and Animals (ESF-11)

TBD
Lt. Brenda Boulware, Animal
Control
(912) 351-6750
brenda_boulware@savannahga.gov

September 1, 8:15AM—9:15AM PIO Association (ESF-15)

Café SCAD
Kelly Foster
(912) 201-4500
klfoster@chathamcounty.org

September 7, 1:30PM—3PM ESF 6 & 8

CC Health Dept. Training Room
Todd Jones
(912) 356-2160
ctjones2@thr.state.ga.us

September 8, 7PM—9PM Fire Chief's Assoc & ESF 4

Thunderbolt Fire Dept
Dustin Hetzel, CEMA
(912) 201-4500
djhsetzel@chathamcounty.org

September 21, 10AM—11:30AM LEPC Meeting

Savannah Civic Center
Noel Perkins
(912) 651-1477
perkinsn@thempc.org

September 29, 8:30AM—9:30AM CLEO (ESF-13)

Weston House Residence Hall
Wynn Sullivan, Armstrong PD
(912) 344-3222
Wynn.Sullivan@armstrong.edu

October 4, 10:30AM—12PM Big MACS Group

CEMA Annex EOC
Jennifer Rodriguez
(912) 201-4500
jlrodriguez@chathamcounty.org

October 5, 1:30PM—3PM ESF 6 & 8

CC Health Dept. Training Room
Todd Jones
(912) 356-2160
ctjones2@thr.state.ga.us

October 18, 9AM—10:30AM EOC Planning Group

CEMA OCH EOC
Jennifer Rodriguez
(912) 201-4500
jlrodriguez@chathamcounty.org

October 27, 8:30AM—9:30AM CLEO (ESF-13)

Weston House Residence Hall
Wynn Sullivan, Armstrong PD
(912) 344-3222
Wynn.Sullivan@armstrong.edu

Training

August 6, 10AM—1PM CEMA Search and Rescue

CEMA Annex EOC
Kelly Foster
(912) 201-4500
klfoster@chathamcounty.org

August 11, 10:30AM—12PM EOC Section Chief/Leadership

CEMA Annex EOC
Must Pre-register
Jennifer Rodriguez
(912) 201-4500
jlrodriguez@chathamcounty.org

September 20, 9AM—10:30AM Logistics Section

CEMA OCH EOC
Don Sullens
(912) 201-4500
dwsullens@chathamcounty.org

October 6, 8AM—5PM EOC Staff Training

CEMA Annex EOC
Must Pre-register
Jennifer Rodriguez
(912) 201-4500
jlrodriguez@chathamcounty.org

Exercises

September 8, 9AM—1PM EOC Exercise

CEMA OCH EOC
Must Pre-register
Jennifer Rodriguez
(912) 201-4500
jlrodriguez@chathamcounty.org

Hats Off!
*CEMA Deputy Director Receives
International Certified Emergency Manager Certification*

The Chatham Emergency Management Agency is proud to announce Deputy Director Dennis Jones has been recognized for his achievements in the Emergency Management profession.

Jones has completed the Internationally Certified Emergency Manager (CEM) program. The CEM certification is a peer review process administered through the International Association of Emergency Managers (IAEM). The CEM designation is the highest honor of professional achievement from the IAEM, which has in its membership more than 4,500 emergency managers representing local, state, and federal government; private industry; and military emergency managers.

Jones completed an extensive credential package, a written examination and a management essay. Jones' essay focused on how to better integrate local historical and cultural institutions in the emergency preparedness planning process.

To maintain certification CEM recipients must submit additional training and contributions to the profession every five years.



Chatham Emergency Management Agency
124 Bull Street, Suite 140
Savannah, Georgia 31401
(912) 201-4500—Office, (912) 201-4504 (Fax)
ChathamEmergency.org
Facebook and Twitter: ChathamEMA

Clayton S. Scott
Director

Dennis Jones
Deputy Director



This Newsletter focuses on activities and accomplishments for each Emergency Support Function and other areas of the Emergency Management System throughout Chatham County. The Newsletter is an available conduit for our partners who may have an interest in submitting a short article or to advertise an upcoming meeting, training event or exercise. For those interested in submitting content for the upcoming Newsletter, please follow the submission criteria below:

- **Submissions emailed to:** Kelly Foster, Emergency Management Specialist/PIO (klfoster@chathamcounty.org)
 - **Deadline:** October 13, 2011
 - **Article Length:** 100 - 750 words
 - **Article Submissions:** Include Article Title, Author Name, Title and Agency
 - **Meeting Notices:** Include Meeting Title, Date, Time, Location and Point of Contact (Name, Phone and Email)
 - **Training Notice:** Include Training Title, Date(s), Time(s), Location, Prerequisites, Registration Deadline, Costs, Point of Contact (Name, Phone and Email Address)
 - **Exercise Notices:** Include Exercise Title, Date(s), Time(s), Location and Point of Contact (Name, Phone and Email Address)
 - **Editorial Note:** The Editor has the discretion to edit submissions. If changes are considered substantive, the author will be contacted to review the changes prior to publication.
-