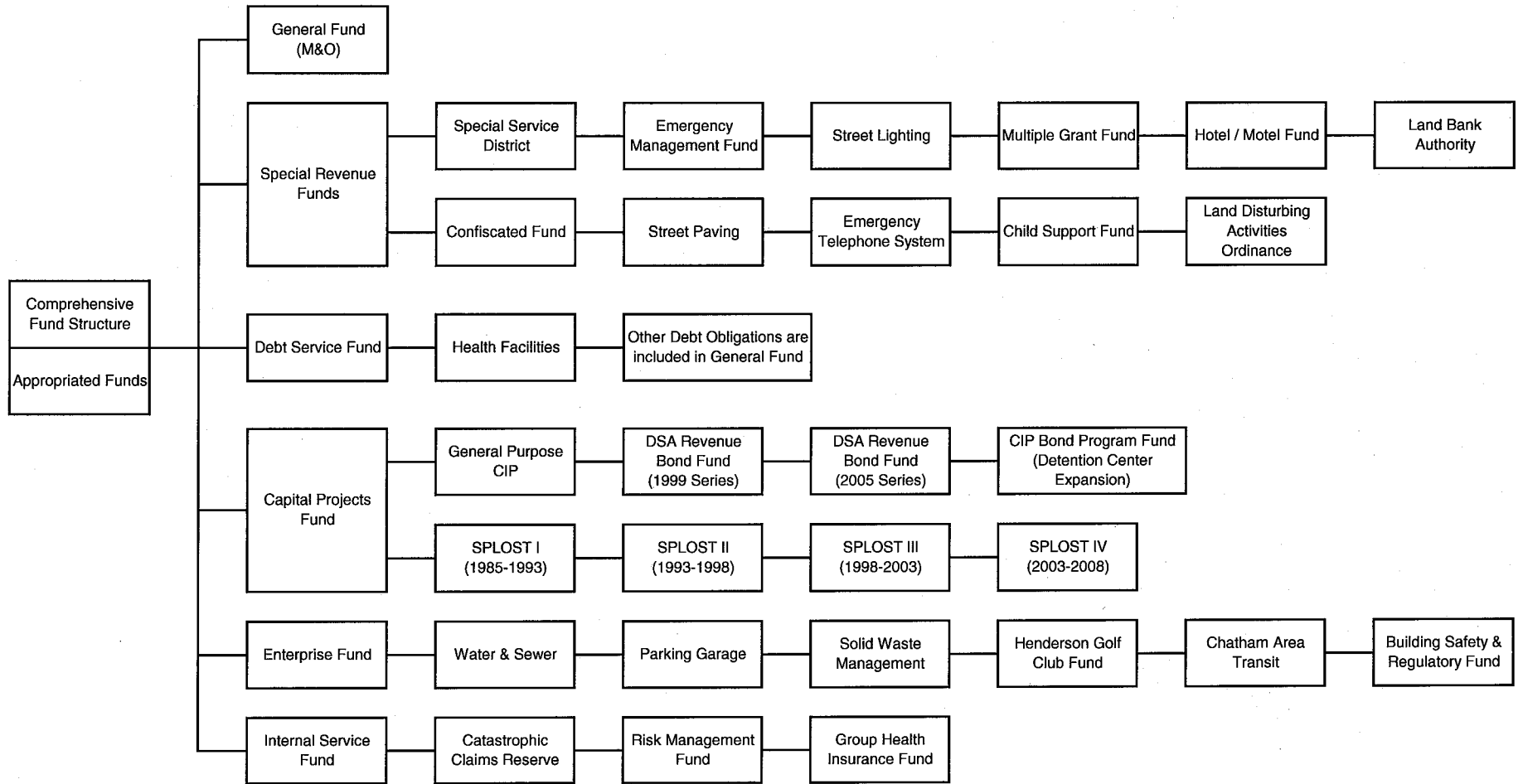


CHATHAM COUNTY, GEORGIA
FISCAL YEAR 2007 / 2008
ALL FUNDS COMBINED BUDGET OVERVIEW

CHATHAM COUNTY BUDGET FUND STRUCTURE FISCAL YEAR 2007 / 2008 BUDGET



CHATHAM COUNTY, GEORGIA
FY 2007 / 2008 RECOMMENDED BUDGET - ALL FUNDS COMBINED

FUNDS WHICH FINANCE: OPERATIONS	2006 / 2007 Amended	2007 / 2008 Adopted
GENERAL M & O	\$ 131,107,909	\$ 141,196,914
SPECIAL REVENUE FUNDS		
Special Service District	\$ 25,386,333	\$ 26,581,300
Confiscated Fund	\$ 522,750	\$ 100,000
Emergency Management Fund	\$ 984,210	\$ 1,052,905
Street Paving Fund	\$ 291,832	\$ 291,720
Street Lighting Fund	\$ 481,451	\$ 598,750
Emergency Telephone Fund	\$ 3,024,968	\$ 2,828,019
Multiple Grant Fund	\$ 1,072,947	\$ 389,240
Child Support Fund	\$ 3,170,645	\$ 2,961,057
Hotel / Motel Tax Fund	\$ 1,291,320	\$ 1,291,320
Land Disturbing Activities Ord.	\$ 689,150	\$ 561,156
Land Bank Authority	\$ 485,310	\$ 367,715

ENTERPRISE FUNDS	2006 / 2007 Amended	2007 / 2008 Adopted
Water & Sewer Revenue Fund	\$ 2,469,793	\$ 2,331,515
Solid Waste Mgmt. Fund	\$ 3,282,377	\$ 3,644,613
C A T Authority Fund	\$ 13,996,242	\$ 13,996,242
Parking Garage Revenue Fund	\$ 275,065	\$ 311,865
Henderson Golf Club Fund	\$ 949,600	\$ 949,600
Building Safety & Reg. Svcs. Fund	\$ 1,582,373	\$ 1,839,276

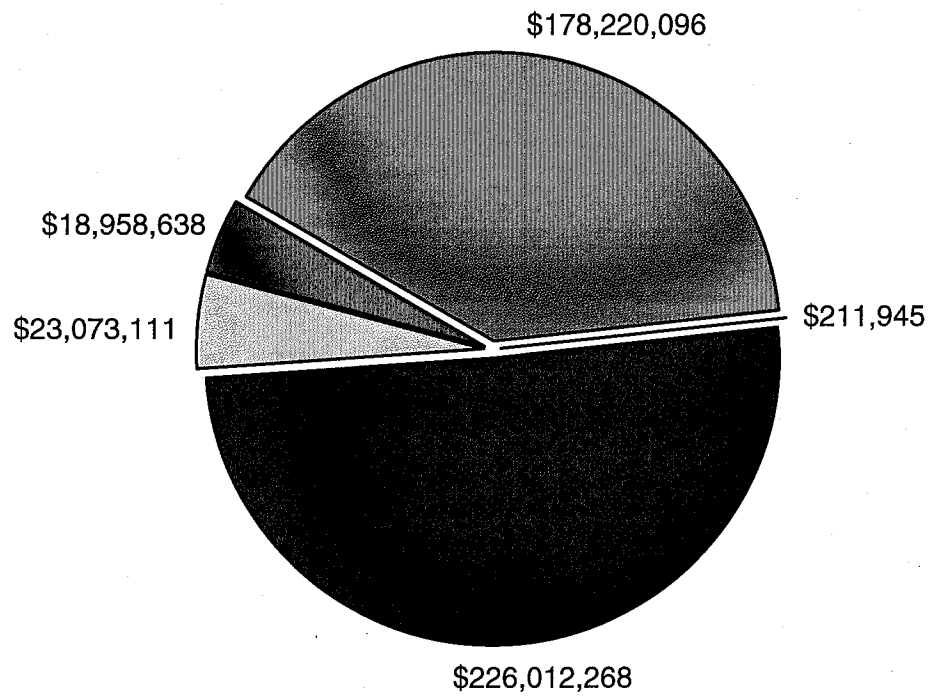
FUNDS WHICH FINANCE: CAPITAL IMPROVEMENTS & SPECIAL PROJECTS	2006 / 2007 Amended	2007 / 2008 Adopted
1 % Sales Tax Fund (85 - 93)	\$ 23,497,331	\$ 23,068,482
1 % Sales Tax Fund (93 - 98)	\$ 10,385,591	\$ 10,185,117
1 % Sales Tax Fund (98 - 03)	\$ 80,592,294	\$ 79,425,350
1 % Sales Tax Fund (03 - 08)	\$ 113,853,929	\$ 100,236,979
General Purpose CIP Fund	\$ 18,549,858	\$ 4,631,110
DSA Revenue Bonds - Series 1999	\$ 984,495	\$ 725,463
DSA Revenue Bonds - Series 2005	\$ 10,389,704	\$ 7,675,631
CIP Bond Prog.- Detention Center	\$ 83,615	\$ 64,136

DEBT SERVICE FUNDS	2006 / 2007 Amended	2007 / 2008 Adopted
Chatham County Hospital Authority	\$ 311,857	\$ 211,945

INTERNAL SERVICE FUNDS	2006 / 2007 Amended	2007 / 2008 Adopted
Catastrophic Claims Reserve Fund	\$ 15,000	\$ 15,000
Risk Management Fund	\$ 3,411,515	\$ 3,664,538
Group Health Insurance Fund	\$ 16,998,614	\$ 15,279,100

TOTAL BUDGET	\$ 470,138,078	\$ 446,476,058
---------------------	-----------------------	-----------------------

FY 07/08 All Funds Combined



- Funds Which Finance Operations 39.92%
- Debt Service Fund .05%
- Funds Which Finance Capital Improvements 50.62%
- Enterprise Funds 5.17%
- Internal Service Funds 4.25%

CHATHAM COUNTY FY 2007 / 2008 RECOMMENDED BUDGET SUMMARY
FUND COMPARISON (EXPENDITURES / TRANSFERS OUT)

CATEGORY	FUND	2003 / 2004 Actual	2004 / 2005 Actual	2005 / 2006 Actual	2006 / 2007 Amended	2007 / 2008 Adopted
General M & O		\$ 95,475,051	\$ 102,374,428	\$ 121,855,538	\$ 131,107,909	\$ 141,196,914
Special Revenue Funds	<i>Special Service District</i>	\$ 17,272,387	\$ 18,773,146	\$ 26,256,323	\$ 25,386,333	\$ 26,581,300
	<i>Confiscated Fund</i>	\$ 69,084	\$ 154,568	\$ 369,930	\$ 522,750	\$ 100,000
	<i>Emergency Management Fund</i>	\$ 644,575	\$ 641,000	\$ 971,177	\$ 984,210	\$ 1,052,905
	<i>Street Paving Fund</i>	\$ 24,173	\$ 4,638	\$ 420	\$ 291,832	\$ 291,720
	<i>Street Lighting Fund</i>	\$ 334,423	\$ 371,168	\$ 397,278	\$ 481,451	\$ 598,750
	<i>Emergency Telephone Fund</i>	\$ 1,437,799	\$ 1,798,271	\$ 1,752,397	\$ 3,024,968	\$ 2,828,019
	<i>Multiple Grant Fund</i>	\$ 1,260,205	\$ 1,623,986	\$ 1,710,890	\$ 1,072,947	\$ 389,240
	<i>Child Support Fund</i>	\$ 2,730,910	\$ 2,620,158	\$ 2,703,044	\$ 3,170,645	\$ 2,961,057
	<i>Hotel / Motel Tax Fund</i>	\$ 1,313,154	\$ 1,411,518	\$ 1,337,417	\$ 1,291,320	\$ 1,291,320
	<i>Land Disturbing Activities Ord.</i>	\$ 327,343	\$ 361,157	\$ 363,645	\$ 689,150	\$ 561,156
	<i>Land Bank Authority</i>	\$ 255,867	\$ 489,462	\$ 276,533	\$ 485,310	\$ 367,715
Debt Service Funds:	<i>Chatham County Hospital Authority</i>	\$ 260,763	\$ 17,782,158	\$ 6,776,705	\$ 311,857	\$ 211,945
Capital Projects Funds	<i>Sales Tax I (85-93)</i>	\$ 2,548,308	\$ 4,132,246	\$ 2,444,007	\$ 23,497,331	\$ 23,068,482
	<i>Sales Tax II (93 - 98)</i>	\$ 5,647,302	\$ 1,913,232	\$ (142,028)	\$ 10,385,591	\$ 10,185,117
	<i>Sales Tax III (98 - 03)</i>	\$ 14,670,787	\$ 9,531,357	\$ 4,121,988	\$ 80,592,294	\$ 79,425,350
	<i>Sales Tax IV (03 - 08)</i>	\$ 28,174,020	\$ 28,699,950	\$ 40,503,496	\$ 113,853,929	\$ 100,236,979
	<i>General Purpose CIP</i>	\$ 2,120,326	\$ 2,753,720	\$ 2,964,519	\$ 18,549,858	\$ 4,631,110
	<i>DSA Revenue Bonds - Series 1999</i>	\$ 434,697	\$ 1,001,813	\$ 1,767,257	\$ 984,495	\$ 725,463
	<i>DSA Revenue Bonds - Series 2005</i>	\$ -	\$ 163,861	\$ 2,543,114	\$ 10,389,704	\$ 7,675,631
	<i>Capital Improvement Bond Program (Jail Expansion)</i>	\$ -	\$ -	\$ -	\$ 83,615	\$ 64,136
Enterprise Funds:	<i>Water & Sewer</i>	\$ 1,495,201	\$ 1,691,215	\$ 1,829,211	\$ 2,469,793	\$ 2,331,515
	<i>CAT Transit Authority</i>	\$ 13,737,575	\$ 15,513,274	\$ 15,820,334	\$ 13,996,242	\$ 13,996,242
	<i>Parking Garage</i>	\$ 220,047	\$ 215,646	\$ 220,921	\$ 275,065	\$ 311,865
	<i>Solid Waste</i>	\$ 1,986,170	\$ 2,090,871	\$ 3,013,304	\$ 3,282,377	\$ 3,644,613
	<i>Henderson</i>	\$ 1,151,150	\$ 946,652	\$ 907,989	\$ 949,600	\$ 949,600
	<i>Building Safety & Reg.</i>	\$ -	\$ 1,240,503	\$ 1,463,926	\$ 1,582,373	\$ 1,839,276
Internal Service Funds:	<i>Catastrophic Claims</i>	\$ -	\$ 161,744	\$ 214,063	\$ 15,000	\$ 15,000
	<i>Risk Management Fund</i>	\$ -	\$ -	\$ 3,667,484	\$ 3,411,515	\$ 3,664,538
	<i>Health Insurance Fund</i>	\$ 12,744,989	\$ 13,163,221	\$ 15,139,719	\$ 16,998,614	\$ 15,279,100
	Total	\$ 206,336,306	\$ 231,624,963	\$ 261,250,601	\$ 470,138,078	\$ 446,476,058

CHATHAM COUNTY, GEORGIA
FY 2007 / 2008 BUDGET
CONSOLIDATED OPERATION BUDGET REVENUES

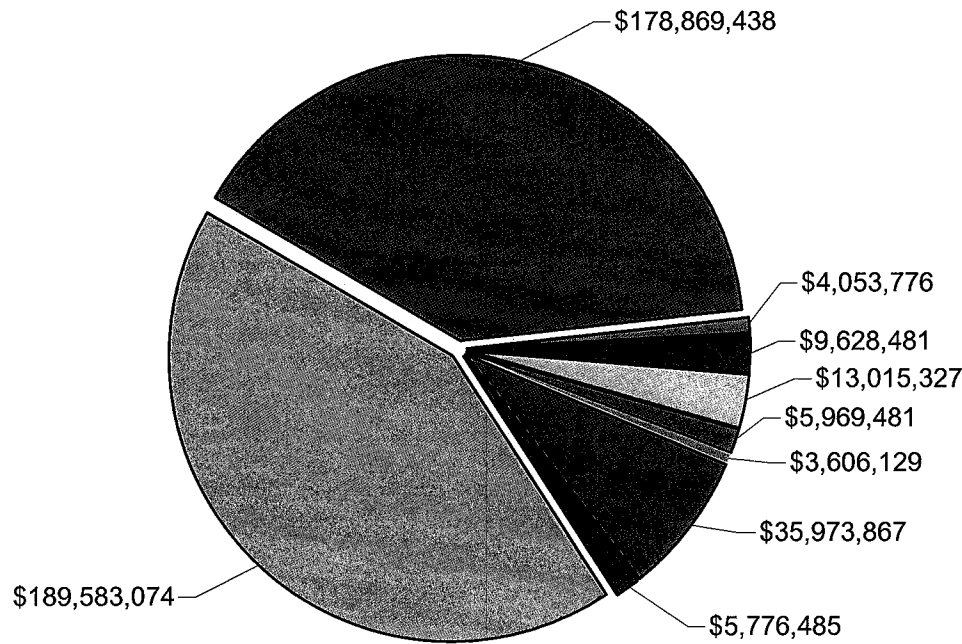
Uses	General Fund	Special Revenue Funds	General Purpose C I P	D S A Revenue Bonds	1% Sales Tax 1985-1993	1% Sales Tax 1993-1998	1% Sales Tax 1998-2003	1% Sales Tax 2003-2008	Debt Service Funds	Enterprise Funds	Internal Service Fund	Total
Property Taxes	109,211,824	14,575,291										123,787,115
Other Taxes	10,800,000	6,668,820						36,686,603				54,155,423
Comm., Penalties, Etc.	926,900											926,900
Licenses & Permits	864,500	1,350,000										2,214,500
Fines & Fees	3,566,481	2,403,000										5,969,481
Revenue - Other Government	5,037,972	5,643,414										10,681,386
Charges For Services	6,803,907	405,995										7,209,902
Indirect Cost Allocation	2,359,390											2,359,390
Other Revenue	493,440	2,440,323	9,817						211,945		18,822,100	21,977,625
Investment Earnings	550,000	350,000						1,753,129		953,000		3,606,129
Water & Sewer Sales										2,231,515		2,231,515
Parking Revenues										264,920		264,920
Transit Revenues										13,996,242		13,996,242
Golf Course Fees										949,600		949,600
Construction Permits										1,839,276		1,839,276
Total Revenue	\$ 140,614,414	\$ 33,836,843	\$ 9,817	\$ 0	\$ 0	\$ 0	\$ 0	\$ 38,439,732	\$ 211,945	\$ 20,234,553	\$ 18,822,100	\$ 252,169,404
Transfers In	582,500	1,417,746	274,025	0	0	0	0	0	0	2,449,309	0	4,723,580
Fund Balance Reserve / Retained Earnings		1,768,593	4,347,268	8,465,230	23,068,482	10,185,117	79,425,350	61,797,247	0	389,249	136,538	189,583,074
Total Appropriations	\$ 141,196,914	\$ 37,023,182	\$ 4,631,110	\$ 8,465,230	\$ 23,068,482	\$ 10,185,117	\$ 79,425,350	\$ 100,236,979	\$ 211,945	\$ 23,073,111	\$ 18,958,638	\$ 446,476,058

CHATHAM COUNTY, GEORGIA
FY 2007 / 2008 BUDGET
CONSOLIDATED OPERATION BUDGET EXPENDITURES / EXPENSES

Uses	General Fund	Special Revenue Funds	General Purpose C I P	D S A Revenue Bonds	1% Sales Tax 1985-1993	1% Sales Tax 1993-1998	1% Sales Tax 1998-2003	1% Sales Tax 2003-2008	Debt Service Funds	Enterprise Funds	Internal Service Fund	Total
General Government	25,606,095	2,389,277	1,638,175	3,412,026			97,393	7,500				33,150,466
Judiciary	24,972,718	3,879,147										28,851,865
Public Safety	47,567,159	16,050,716	298,060	64,380		785,313		11,483,920				76,249,548
Public Works	1,368,874	5,931,571	1,078,000			8,900,686	76,659,054	53,903,798				147,841,983
Health & Welfare	10,449,000		37,442	1,500,634								11,987,076
Culture & Recreation	10,707,269		1,500,000	3,421,830		147,660	2,508,929	22,738,259				41,023,947
Housing & Development	245,919	1,975,540										2,221,459
Insurance & Bonds												0
Other Gov. Svcs.	8,774,775	3,311,351	79,433	66,360		351,458	159,974			6,278,228	18,958,638	37,980,217
Capital Outlay		8,775			23,068,482			12,103,502		626,000		35,806,759
Public Transportation										13,996,242		13,996,242
Depreciation										333,365		333,365
Debt Service	5,584,930	87,120							211,945			5,883,995
Permits / Zoning / Inspection										1,812,276		1,812,276
Total Expenditures / Expenses	\$ 135,276,739	\$ 33,633,497	\$ 4,631,110	\$ 8,465,230	\$ 23,068,482	\$ 10,185,117	\$ 79,425,350	\$ 100,236,979	\$ 211,945	\$ 23,046,111	\$ 18,958,638	\$ 437,139,198
Transfers Out	5,920,175	3,389,685	0	0	0	0	0	0	0	27,000	0	9,336,860
Total Appropriations	\$ 141,196,914	\$ 37,023,182	\$ 4,631,110	\$ 8,465,230	\$ 23,068,482	\$ 10,185,117	\$ 79,425,350	\$ 100,236,979	\$ 211,945	\$ 23,073,111	\$ 18,958,638	\$ 446,476,058

FY 07/08

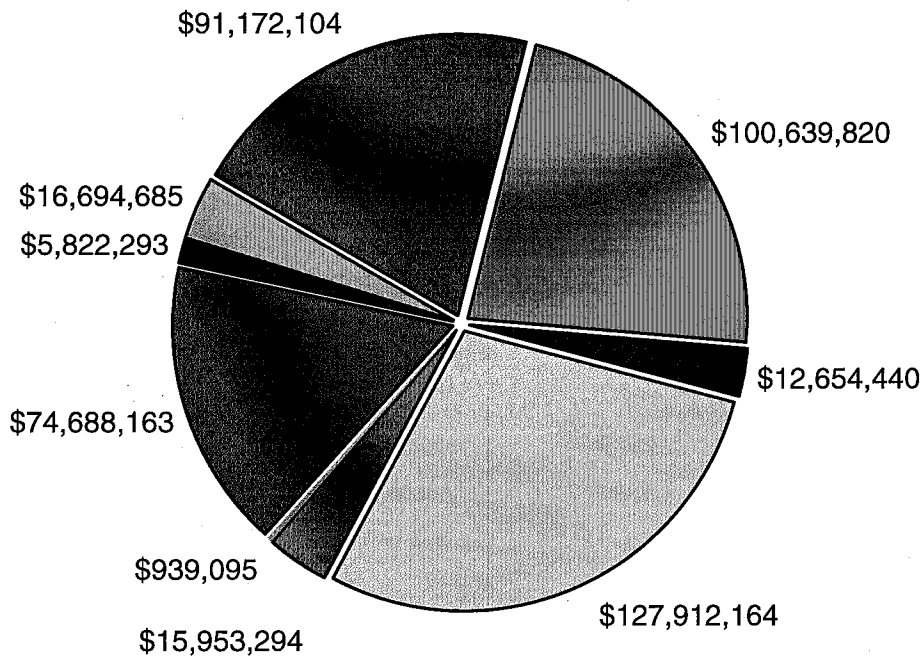
All Funds Combined by Revenue Category



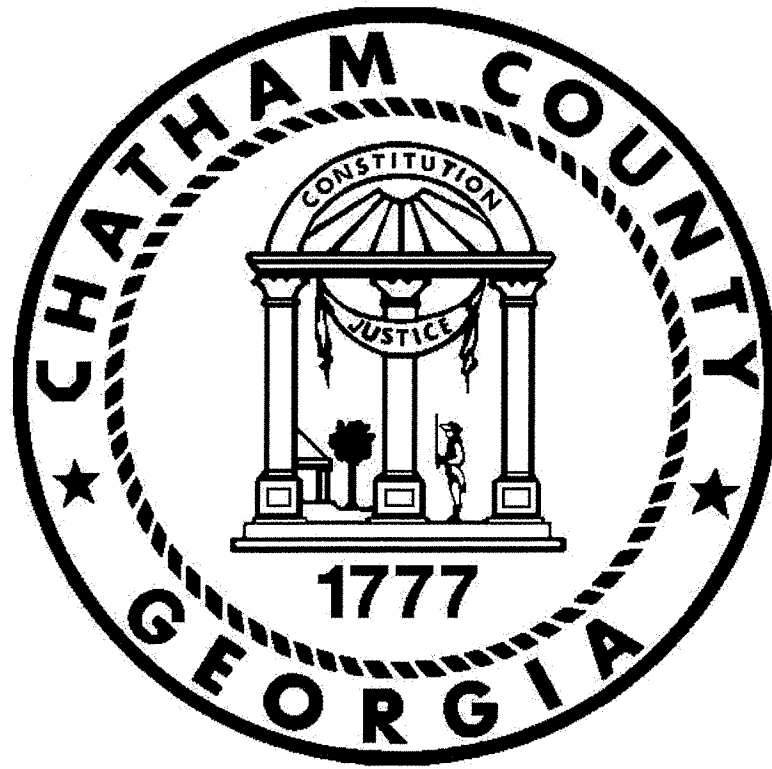
- Tax Revenues
40.06%
- License & Permit Revenues
.91%
- Inter Governmental Revenues
2.16%
- Charges For Services
2.92%
- Fines & Forfeitures Revenue
1.34%
- Interest Revenue
.81%
- Miscellaneous Revenue
8.06%
- Other Funding Source
Revenues 1.29%
- Fund Balance
42.46%

FY 07/08

All Funds Combined by Expenditure Type



- Personal Services
20.42%
- Purchased/Contracted Svcs.
22.54%
- Supplies Expenditures
2.83%
- Capital Outlay
28.65%
- Interfund/Dept. Svcs.
3.57%
- Depreciation .21%
- Other Costs
16.73%
- Debt Service
1.30%
- Other Financing Uses
3.74%



CHATHAM COUNTY, GEORGIA FY 2007 / 2008 BUDGET

EXPENDITURES - ALL FUNDS

- Chatham County FY 2007/2008 budget for all funds totals \$446,476,058, a decrease of \$23,237,020 or 4.92 percent from FY 2006/2007.
- General Fund (M&O) FY 2007 / 2008 budget totals \$141,196,914, an increase of \$10,089,005 or 7.7 percent over FY 2006 / 2007 budget.
- Special Service District Fund FY 2007 / 2008 budget totals \$26,581,300, an increase of \$1,194,967 or 4.7 percent over FY 2006 / 2007 budget.
- Confiscated Fund FY 2007 / 2008 budget totals \$100,000, a decrease of 80.8 percent from FY 2006 / 2007 budget.
- Chatham Emergency Management Fund FY 2007 / 2008 budget totals \$1,052,905, which is an increase of \$68,695 or 6.98 percent over FY 2006 / 2007.
- Street Lighting Fund FY 2007 / 2008 budget totals \$598,750, an increase of 24.4 percent over FY2006/ 2007.
- Street Paving Fund FY 2007 / 2008 budget totals \$291,720, a decrease of .03 percent from FY 2006/2007.
- Emergency Telephone System Fund FY 2007 / 2008 budget totals \$2,828,019, a decrease of 6.5 percent from FY 2006 / 2007.
- Multiple Grants Special Revenue Fund FY 2007 / 2008 budget totals \$389,240, a decrease of 63.7 percent from FY 2006/2007.
- Child Support Recovery Fund adopted budget for FY 2007 / 2008 is \$2,961,057, a decrease of \$209,588 or 6.61percent from FY 2006 / 2007.
- Hotel / Motel Special Revenue Tax Fund FY 2007 / 2008 totals \$1,291,320, the same as FY 2006/2007.
- Land Disturbing Activities Ordinance Fund FY 2007 / 2008 budget totals \$561,156, a decrease of \$127,944 or 18.6 percent from FY 2006 / 2007.
- Land Bank Authority Fund FY 2007 / 2008 is budgeted at \$367,715, a decrease of \$117,595 or 24.23 percent from FY 2006 / 2007.
- One Percent Sales Tax Fund I (1985 - 1993) FY 2007 / 2008 budget totals \$23,068,482, a decrease of \$428,849 or 1.83 percent from FY 2006 / 2007.
- One Percent Sales Tax Fund II (1993 - 1998) FY 2007 / 2008 budget totals \$10,185,117, a decrease of \$200,474 or 1.93 percent from 2006 / 2007.
- One Percent Sales Tax Fund III (1998 - 2003) FY 2007 / 2008 budget is \$79,425,350, a decrease of \$1,166,944 or 1.45 percent from FY 2006 / 2007.

- One Percent Sales Tax Fund IV (2003 - 2008) FY 2007 / 2008 budget is \$100,236,979, a decrease of \$13,616,950 or 11.96 percent from FY 2006 / 2007.
- General Purpose Capital Improvements Fund Program Budget has an adopted budget for FY 2007 / 2008 of \$4,631,110.
- Capital Improvements Program Budget - 1999 DSA Revenue bonds was created to account for bond proceeds and capital projects expenditures in accordance with the Bond Ordinance. FY 2007 / 2008 has been adopted at \$725,463.
- Capital Improvements Program Budget - 2005 DSA Revenue bonds was created to account for bond proceeds and capital projects expenditures in accordance with the Bond Ordinance. FY 2007 / 2008 has been adopted at \$7,675,631.
- Capital Improvements Program - Detention Center Expansion Fund was created to account for bond proceeds which will be used to expand the County's Detention Facility. FY 2007 / 2008 has been adopted at \$64,136.
- Chatham County Hospital Authority Debt Service Fund FY 2007 / 2008 budget totals \$211,945, which is a decrease of \$99,912.
- Water & Sewer Revenue Fund FY 2007 / 2008 budget totals \$2,331,515, a decrease of 5.6% percent from FY 2006 / 2007.
- Solid Waste Management Fund FY 2007 / 2008 budget totals \$3,644,613, an increase of 11 percent over FY 2006 / 2007 budget.
- Chatham Area Transit Authority Fund FY 2007 / 2008 budget totals \$13,996,242, the same as FY 2006 / 2007.
- Parking Garage Revenue Fund FY 2007 / 2008 budget totals \$311,865, an increase of \$36,800 over 2006 / 2007..
- Henderson Golf Course Fund FY 2007 / 2008 budget totals \$949,600, the same as 2006 / 2007.
- Building Safety & Regulatory Services Fund was created for FY 2005 / 2006 to account for the revenues and expenses associated with zoning, inspections and permitting. The FY 2007 / 2008 FY budget totals \$1,839,276, an increase of \$256,903 over FY 2006 / 2007.
- Catastrophic Claims, within the Internal Service Fund group, FY 2007 / 2008 budget totals \$15,000, the same as FY 2006 / 2007.
- Risk Management, within the Internal Service Fund group, FY 2007 / 2008 budget totals \$3,664,538, an increase of \$253,023 over FY 2006 / 2007.
- Group Health Insurance, within the Internal Service Fund group, FY 2007 / 2008 budget totals \$15,279,100, a decrease of \$1,719,514 or 10.1 percent from FY 2006 / 2007.