



GOVERNMENT FINANCE OFFICERS ASSOCIATION

*Distinguished  
Budget Presentation  
Award*

PRESENTED TO

**Chatham County  
Georgia**

For the Fiscal Year Beginning

**July 1, 2007**

*Oliver S. Cox*

President

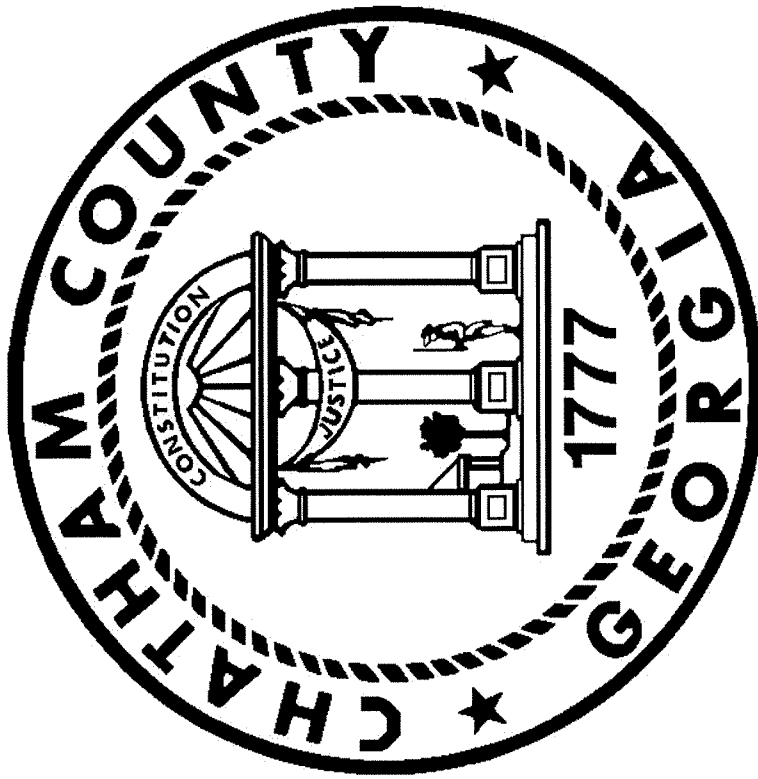
*Jeffrey P. Brown*

Executive Director

The Government Finance Officers Association of the United States and Canada (GFOA) presented an award for Distinguished Budget Presentation to Chatham County, Georgia for its annual budget for the fiscal year beginning July 1, 2007.

In order to receive this award, a governmental unit must publish a budget document that meets program criteria as a policy document, as an operations guide, as a financial plan and as a communication device.

The award is valid for a period of one year only. We believe our current budget continues to conform to program requirements, and we are submitting it to GFOA to determine its eligibility for another award.



**CHATHAM COUNTY, GEORGIA  
ADOPTED ANNUAL BUDGET - FISCAL YEAR 2008 / 2009  
BOARD OF COMMISSIONERS  
2005 - 2008**

**CHAIRMAN**  
Pete Liakakis

**VICE-CHAIRMAN**  
Dr. Priscilla D. Thomas

**CHAIRMAN PRO-TEM**  
Dean Kicklighter

**COMMISSIONERS**

Helen L. Stone  
Patrick O. Shay  
James J. Holmes  
Patrick K. Farrell

Harris Odell, Jr.  
Dean Kicklighter  
David Gellatly  
Dr. Priscilla D. Thomas

**COUNTY MANAGER**  
Russell E. Abolt

**ASSISTANT COUNTY MANAGER**  
Patrick Monahan

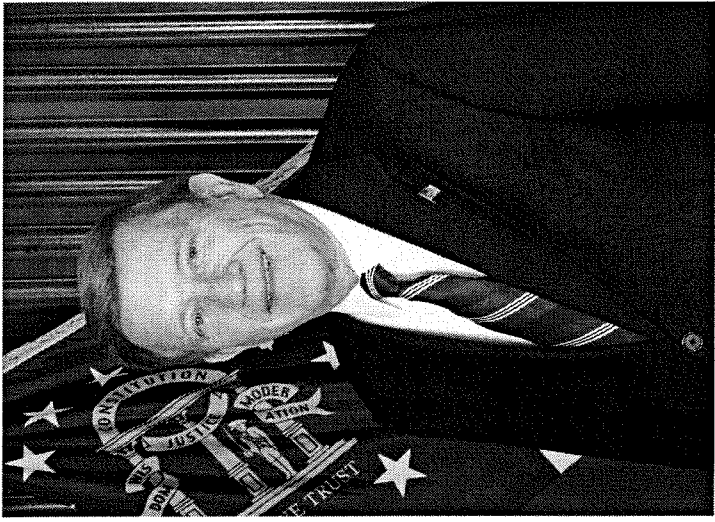
**COUNTY CLERK**  
Sybil E. Tillman

**COUNTY ATTORNEYS**  
R. Jonathan Hart

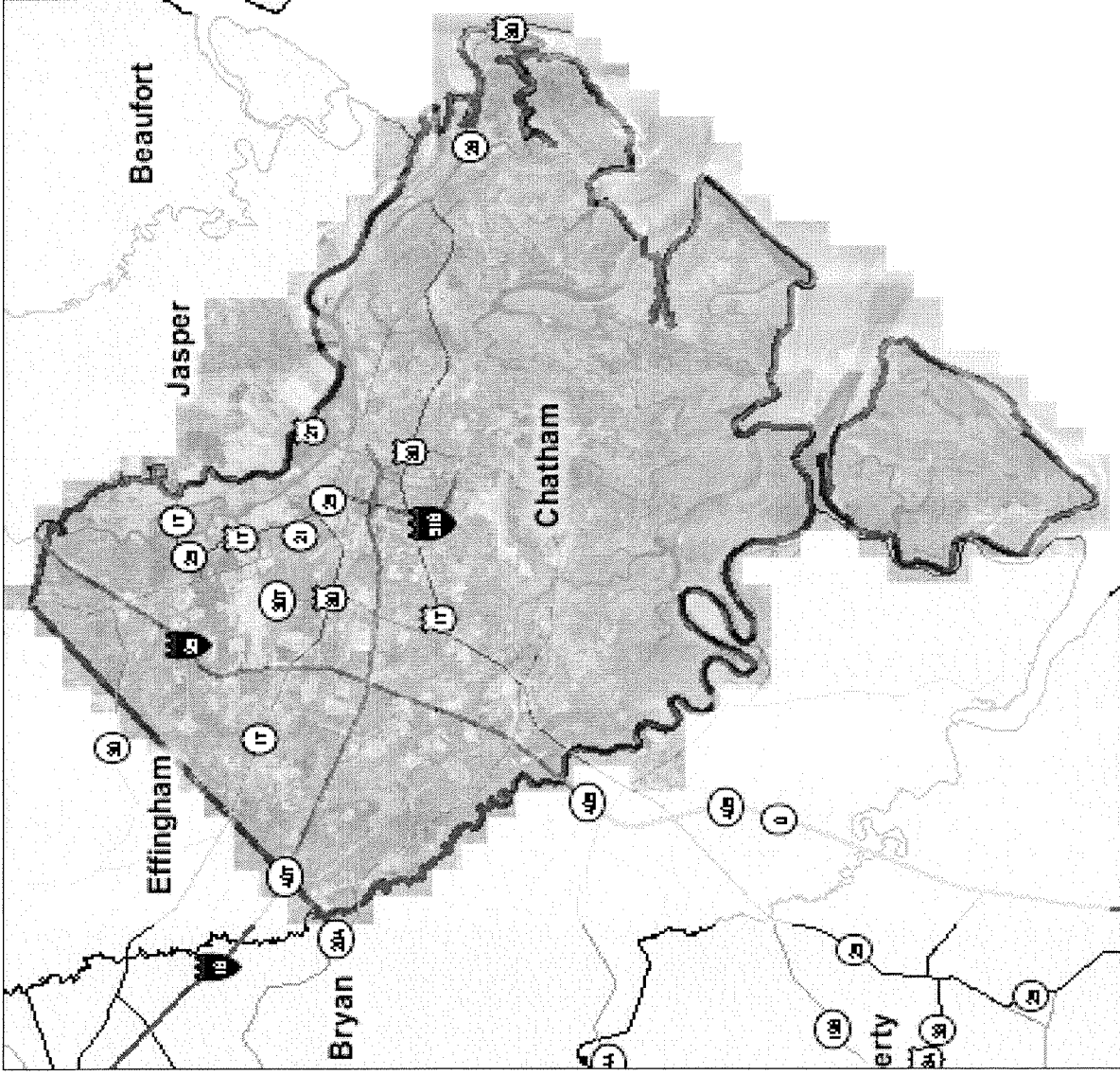
Lisa G. Colbert

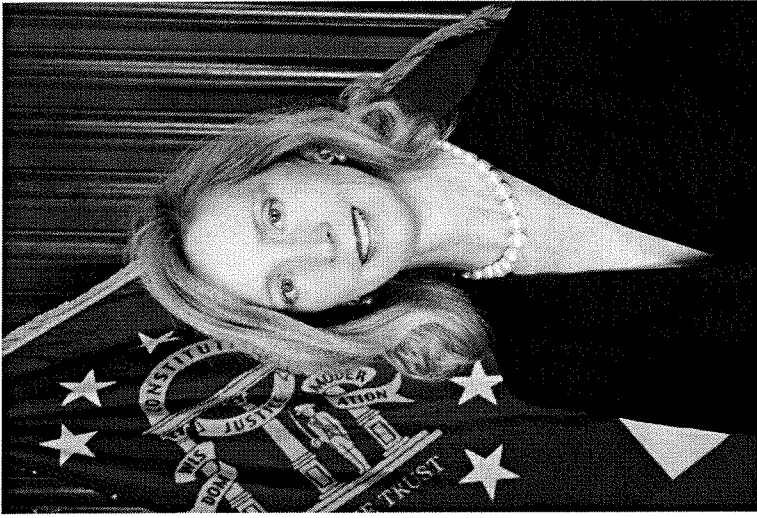
**COMPILED BY - CHATHAM COUNTY FINANCE STAFF**

Linda Cramer, Finance Director  
Read DeHaven, Budget Officer  
Estelle Brown, Assistant Budget Officer  
Tom Drane, Senior Project Analyst  
Christopher Morris, Senior Budget & Management Analyst  
Rushedra Adeshina, Senior Budget & Management Analyst  
Gloria Saugh, Senior Budget & Management Analyst  
Delores Stokes, Administrative Assistant

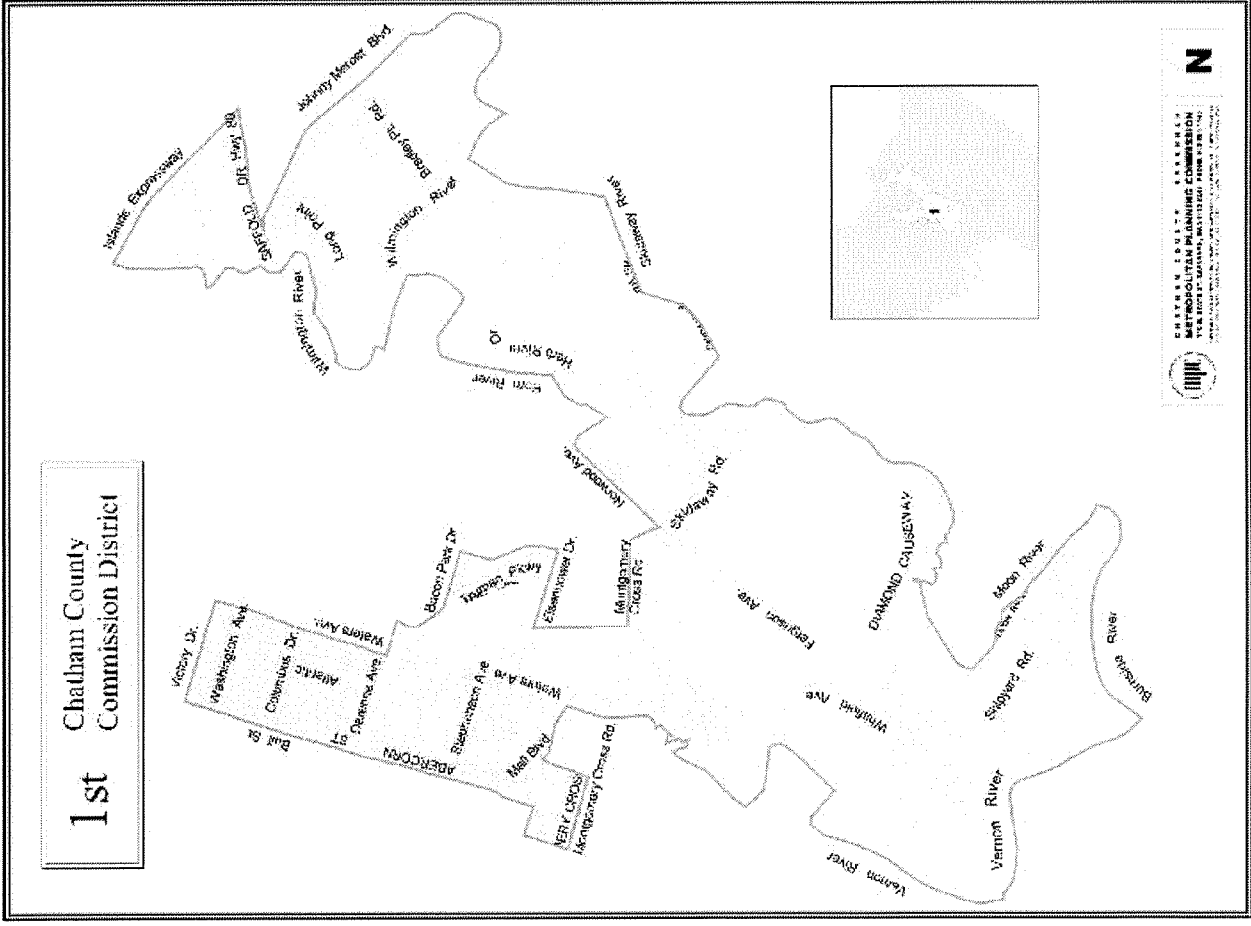


Commission  
Chairman  
Pete Liakakis



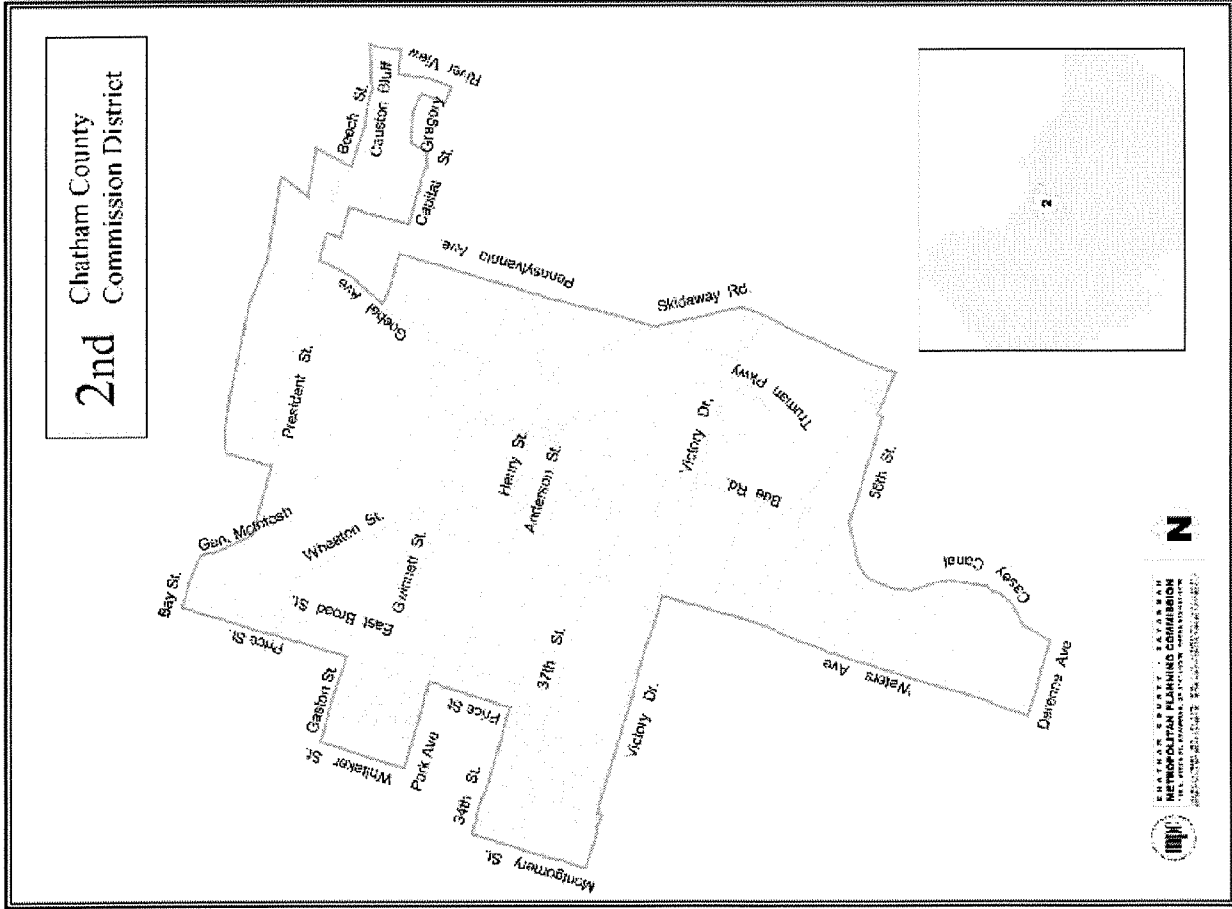


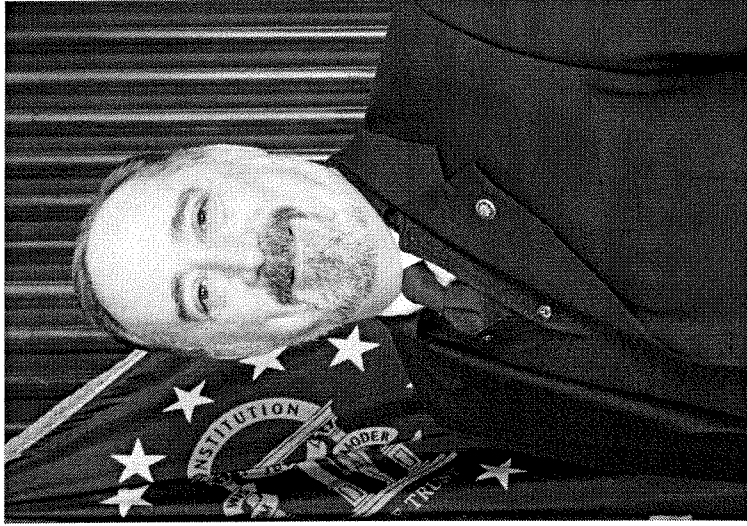
Commissioner  
1st District  
Helen L. Stone



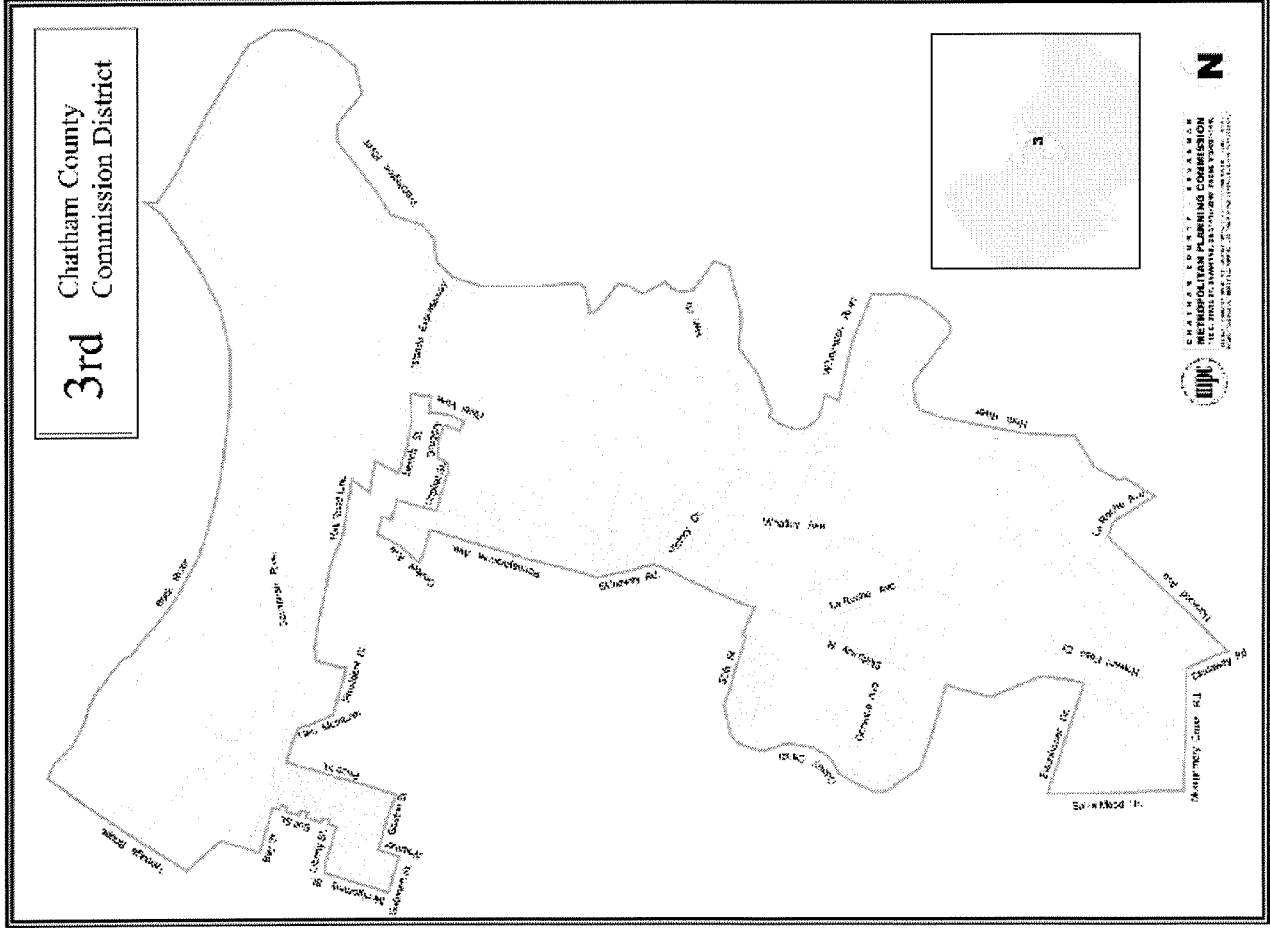


Commissioner  
2nd District  
John J. Holmes





Commissioner  
3rd District  
Patrick Shay





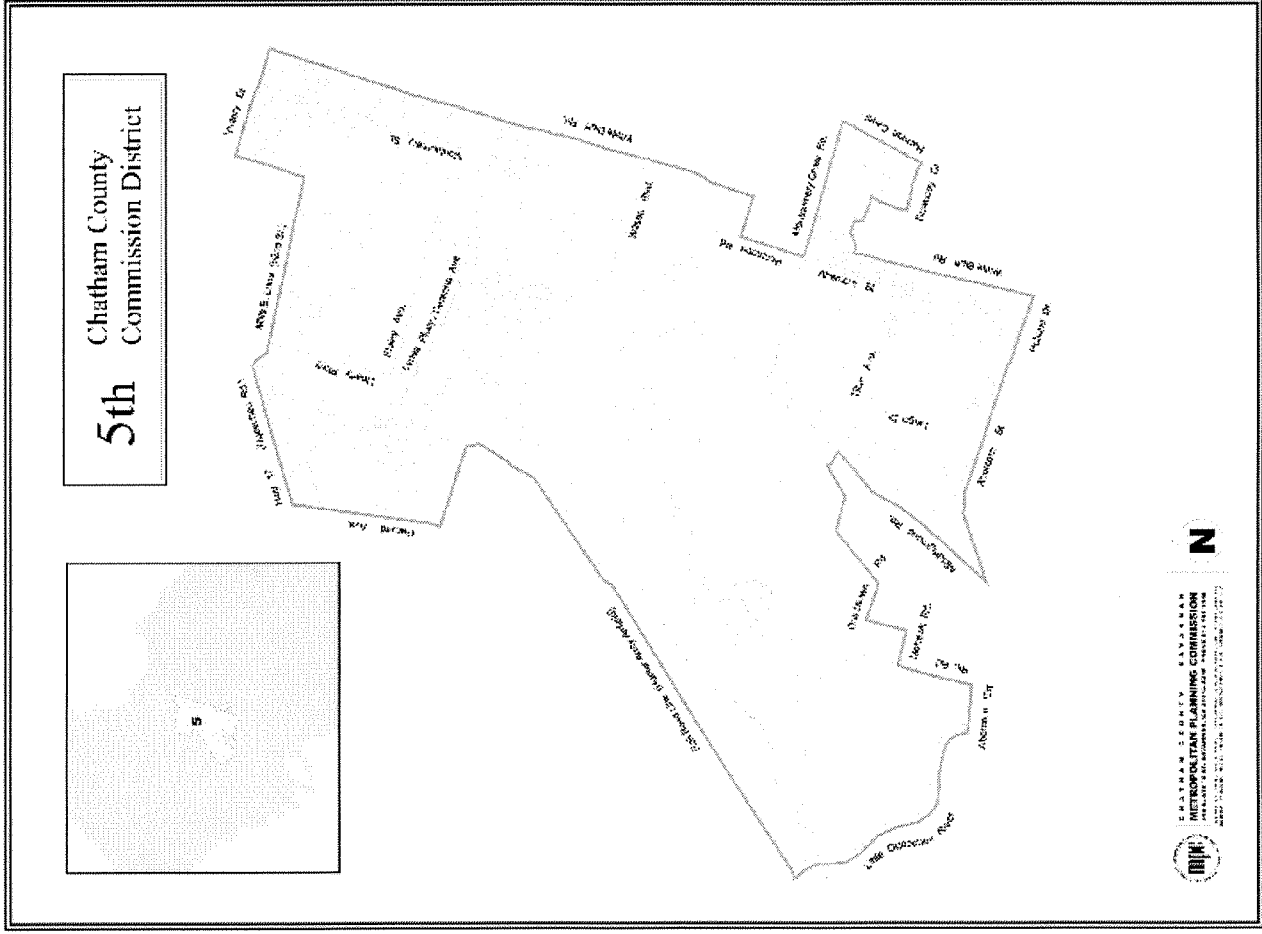
Commissioner  
4th District  
Patrick K. Farrell

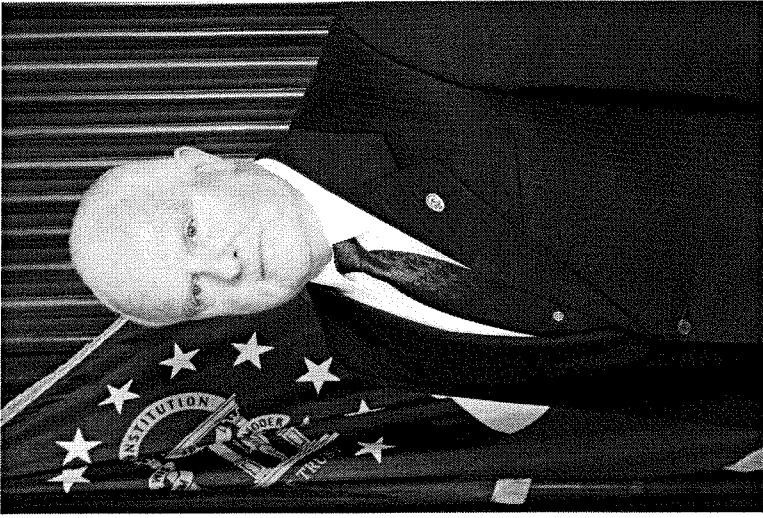




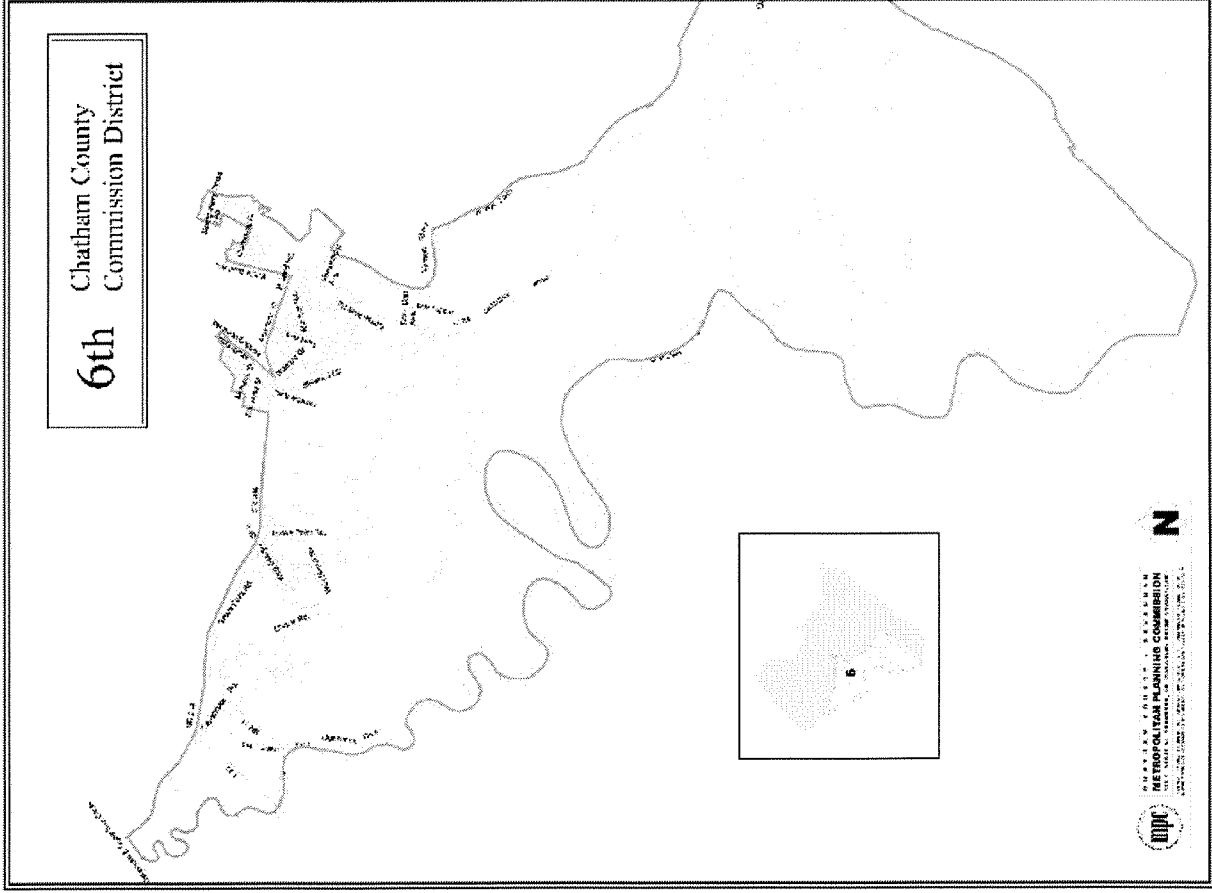


**Commissioner  
5th District  
Harris Odell, Jr.**



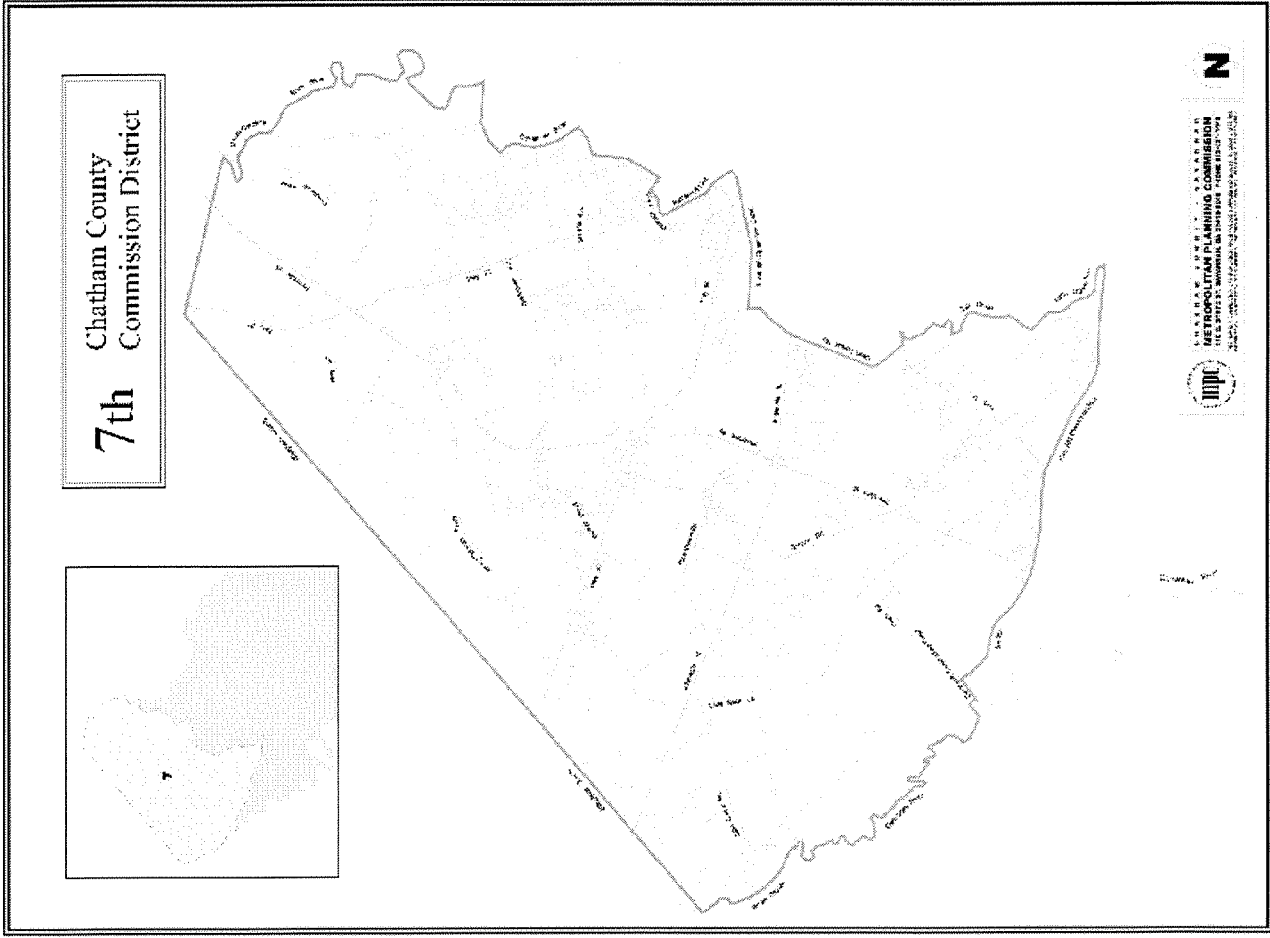


Commissioner  
6th District  
David M. Gellatly



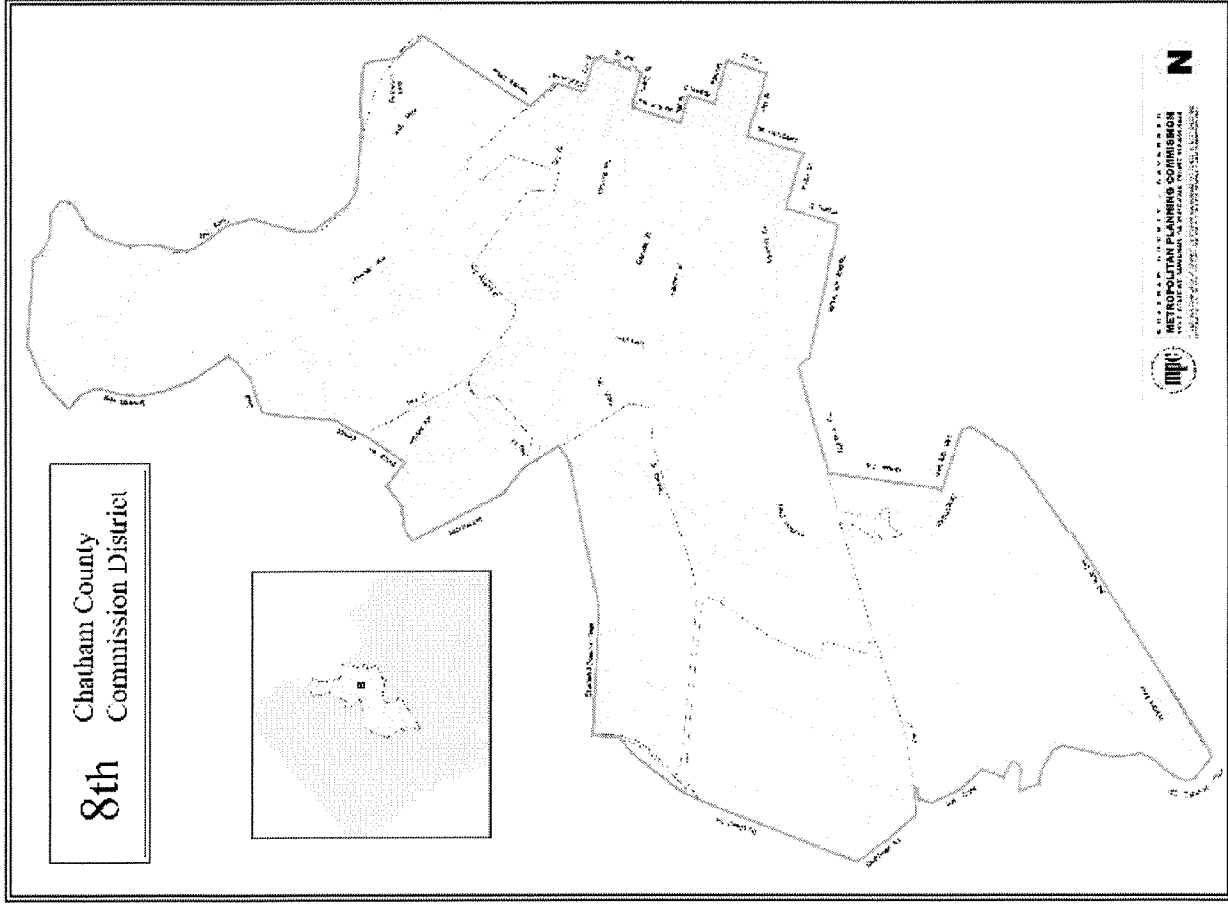


Commissioner  
7th District  
Dean Kicklighter





Commissioner  
8th District  
Dr. Priscilla D. Thomas



**CHATHAM COUNTY, GEORGIA  
ELECTED OFFICIALS & DEPARTMENT DIRECTORS  
FY 2008 / 2009 BUDGET**

**ELECTED OFFICIALS & JUDICIAL APPOINTMENTS**

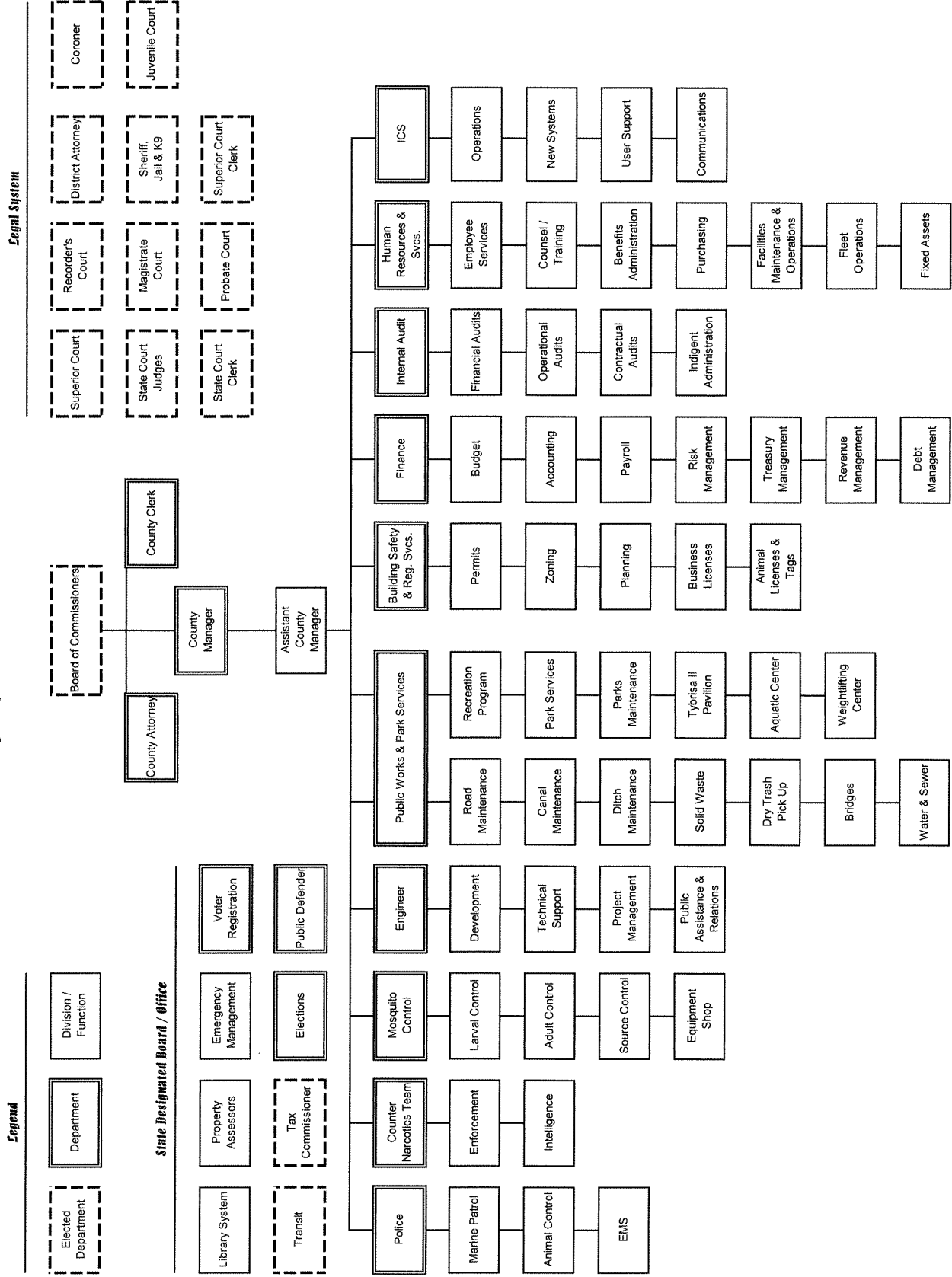
|                              |                          |                              |                      |
|------------------------------|--------------------------|------------------------------|----------------------|
| Child Support Recovery       | David Lowe               | State Court Administrator    | Brian Hart           |
| Coroner                      | Dr. James C. Metts, Jr.  | State Court Judge            | Ronald E. Ginsberg   |
| District Attorney            | Spencer Lawton, Jr.      | State Court Judge            | H. Gregory Fowler    |
| Detention Center             | Col. McArthur Holmes     | State Court Judge            | Herman W. Coolidge   |
| Juvenile Court Judge         | John W. Beam, Jr.        | Superior Court Administrator | Shawn L. Amacher     |
| Juvenile Court Judge         | Patricia Stone           | Circuit Public Defender      | Michael Edwards      |
| Juvenile Court Judge         | Leroy Burke III          | Superior Court Clerk         | Dan Massey           |
| Juvenile Court Administrator | Crystal T. Cooper        | Superior Court Judge         | Perry Brannen, Jr.   |
| Magistrate Court Judge       | Mary Kathryn Moss        | Superior Court Judge         | Michael L. Karpf     |
| Probate Court Judge          | Harris Lewis             | Superior Court Judge         | James F. Bass, Jr.   |
| Recorder's Court Judge       | Lawrence G. Dillon       | Superior Court Judge         | John E. Morse, Jr.   |
| Recorder's Court Judge       | Tammy Cox Stokes         | Superior Court Judge         | Penny Haas Freesmann |
| Recorder's Court Judge       | Claire Cornwell Williams | Superior Court Judge         | Louisa Abbot         |
| Sheriff                      | Al St Lawrence           | Tax Commissioner             | Daniel T. Powers     |
|                              |                          | Victim Witness               | Helen Smith-Bradley  |

**BOARD APPOINTED POSITIONS AND COUNTY DEPARTMENT DIRECTORS**

|                               |                         |  |                         |
|-------------------------------|-------------------------|--|-------------------------|
| County Attorney               | R. Jonathan Hart        | Building Safety & Regulatory Director      | Gregori Anderson        |
| County Clerk                  | Sybil Tillman           | Internal Audit Director                    | J.M. "Reese" White, Jr. |
| County Manager                | Russell E. Abolt        | ICS Director                               | Lewis L. Leonard        |
| Assistant County Manager      | Patrick C. Monahan      | Mosquito Control                           | Henry Lewandowski       |
| Counter Narcotics Team        | Commander Roy J. Harris | Savannah-Chatham Metropolitan Police Dept. | Chief Michael Berkow    |
| Director of Engineering       | Albert Bungard          | Public Works & Parks Services              | Robert Drewry           |
| Emergency Management Director | Clayton Scott           | Tax Assessor                               | Sheryl Snider           |
| Finance Director              | Linda Cramer            | Voter Registration Director                | Sandra Williams         |
| Human Resources & Services    | Michael Kaigler         | Elections Supervisor                       | Russell Bridges         |

# CHATHAM COUNTY ORGANIZATIONAL CHART

By Department / Function



## Executive Summary

The fiscal year 2009 Budget was adopted by the Board of Commissioners on June 27, 2008. The key difference between the adopted budget and the County Manager's recommended budget was the decrease in property tax revenues. The proposed budget had assumed a 9% digest growth rate in the General Fund M&O and 6% in the Special Service District. Actual digest growth rates were 7.84% in the General Fund M&O and 5.27% in the Special Service District. The reduced property taxes lead to overall budget reductions of \$873,747 in the General Fund M&O and \$89,788 in the Special Service District.

During the budget process, department/agency directors and elected officials presented a number of decision packages for funding consideration. Outside agencies also requested funding. Upon budget adoption, the Commissioners made some adjustments to include critical decision packages and community funding needs. These included \$70,000 for the Child Support Recovery Office to offset grant shortfalls, additional matching funds for the Sheriff's K-9 grant of \$204,000, funding for All Walks of Life, \$25,000, and funding for the Youth Futures Authority of \$50,000.

Some expenditure items included in the County Manager's recommended budget were decreased or adjusted based on revised estimates. One such item was the cost for employee and retiree health care. Retiree health care claim estimates were increased by Blue Cross Blue Shield by \$314,686. Correspondingly, active employee claim estimates were reduced to \$8,767 per employee from an initial budget amount of \$9,130 per employee. OPEB pre-funding was reduced from \$2,100 per employee to \$2,000 per employee. The department budget for the Board of Elections was decreased \$80,000 based on analysis of historical trend data. The Internal Audit department's budget and the County Commissioners budget were decreased by \$80,000 and \$100,000 to reflect revised program cost estimates for consulting services.

The recommended budget had included a full year of funding for several items. As budget adoption approached, it was acknowledged that some programs would not begin on July 1. Consequently, for budget purposes, these expenditures were reduced to reflect revised start dates. Such programs included Phase Two - Classification and Compensation Study and the Community Outreach Program for the Detention Center expansion project.

Reconciliation from the County Manager's proposed budget to the adopted budget is shown in the following table:

| <b>RECONCILIATION</b>                                     |                             |                                 |
|---|-----------------------------|---------------------------------|
| <b>Recommended vs. Adopted Budget</b>                     |                             |                                 |
|   | <b>General Fund M&amp;O</b> | <b>Special Service District</b> |
| <b>Revenues &amp; Fund Balance Appropriations:</b>        |                             |                                 |
| Manager's recommended                                     | \$ 151,233,586              | \$ 29,381,657                   |
| Adjustments:  |                             |                                 |
| - Digest growth   | (873,747)                   | (89,788)                        |
| - Interest  | 10,743                      |                                 |
| - Intergovernmental                                       | 4,268                       |                                 |
| - Reduction in use of fund balance                        |                             | (31,715)                        |
| Total adjustments   | <u>(858,736)</u>            | <u>(121,503)</u>                |
| <b>Adopted Revenues &amp; Fund Balance Appropriations</b> | <b>\$ 150,374,850</b>       | <b>\$ 29,260,154</b>            |
| <b>Expenditures:</b>                                      |                             |                                 |
| Manager's recommended                                     | \$ 151,233,586              | \$ 29,381,657                   |
| Adjustments:  |                             |                                 |
| Reductions  |                             |                                 |
| - General Government                                      | (260,000)                   |                                 |
| - Housing & Development                                   | (86,500)                    |                                 |
| - Other Expenditures                                      | (1,384,712)                 | (121,503)                       |
| Additions   |                             |                                 |
| - General Government                                      | 65,790                      |                                 |
| - Judiciary   | 88,000                      |                                 |
| - Public Safety   | 254,000                     |                                 |
| - Other Financing Sources                                 | 464,686                     |                                 |
| Total adjustments   | <u>(858,736)</u>            | <u>(121,503)</u>                |
| <b>Adopted Expenditures</b>                               | <b>\$ 150,374,850</b>       | <b>\$ 29,260,154</b>            |



The County Commission adopts a set of goals for the upcoming fiscal year in February. The relationship of the adopted budget to the Board's stated goals is summarized below:

**Relationship of Goals to Adopted Budget**

To provide all citizens the best place to live, work and play:

- By protecting the public safety of everyone
- By providing outstanding recreational services and facilities community-wide
- By stimulating economic growth through cooperative business practices to include predictable permitting
- By establishing and maintaining effective management of the County's resources
- By responding to legislative mandates in the most cost-effective manner
- By looking at a range of options for water and sewer service in the Special Service District
- By relying on management engineering to evaluate the need for some major budget expenditures

The adopted budget seeks to be responsive to these goals and objectives:

*Public Safety*

- Increased appropriations to fund police and emergency communication activities under the Savannah-Chatham Metropolitan Police Department
- Increased appropriations to cover high population service levels at the County's Detention Facility
- Increased funding to Counter Narcotics Team for participation by the Board of Education
- Detention Center expansion received top funding priority for the SPLOST 2008-2014 referendum
- Funding for police vehicles as required under the intergovernmental agreement for the Savannah-Chatham Metropolitan Police Department
- CIP includes \$693,000 to purchase 33 sirens completing the CEEMA outdoor warning siren program
- CIP includes \$350,000 to convert 1/3 of radios from analog to digital
- Funding to supplement K-9 unit as a result of grant reductions

*Recreational Services and Facilities*

- CIP includes \$2 million for Turner's Creek Boat Ramp project
- CIP includes \$400,000 for library books
- Continues departmental funding in accordance with Recreation Action Plan
- Silver Cheetah track program included in departmental budget

*Cooperative Business Practices*

- Funding for SAGIS initiatives within SSD

- Continued funding for Project Step-Up program, including staff
- Disparity Study funding carried forward to FY2009
- ACS software project is on-going
- Increased funding for public/private partnership providing indigent health care
- Community Outreach project for Detention Center expansion funded
- A staff team is working on how to implement “Predictable Permitting”

#### *Management of County Resources*

- Reserve levels reflect County Financial Policies
- A contract was awarded for management engineering services
- Increased pre-funding of OPEB benefits
- Employee Health Clinic and Wellness programs in Health Insurance Fund
- Inclusion of retiree cost of living adjustment
- Funding for the vehicle painting program continues
- Inclusion of class and comp study results and employee cost of living adjustment
- General Fund M&O fleet replacements funded in CIP Fund recommendations
- All Sales Tax IV projects are restored to their original budget levels

#### *Legislative Mandates*

- OPEB Trust Fund to reflect new legislation providing investment authority for plan assets
- Coastal Georgia RDC dues increased

## Background Information

Chatham County's unique history as well as its coastal location provide economic benefits to the region. Data on the County is presented herein:

### History of Chatham County

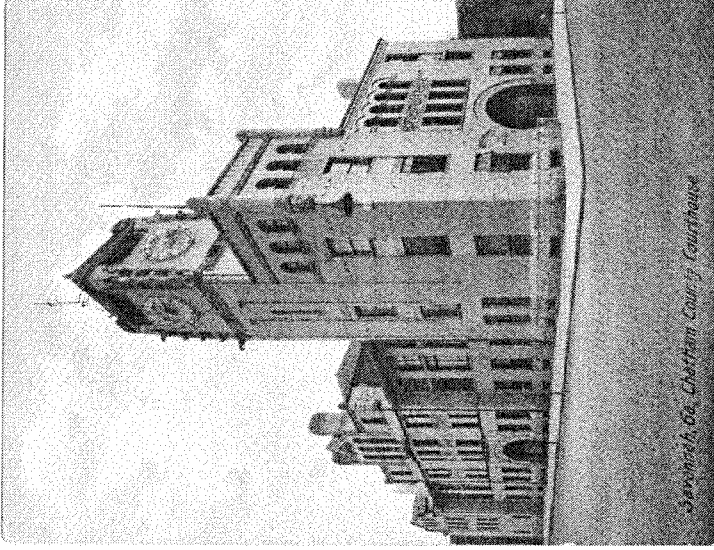


Photo of the court house around 1908  
Graphic provided courtesy of Christopher Morris

Chatham County is the nucleus from which the present great State of Georgia has grown. Savannah was the first settlement recognized by the English government in colonial days. At Savannah, on February 12, 1733, with 116 settlers, the colony of Georgia was founded by James Edward Oglethorpe, a member of the English Parliament. In 1741, the Trustees divided the new colony into two colonies - the Savannah Colony and the Frederica Colony. In 1743, Oglethorpe departed for England leaving William Stephens, the first President of Georgia, over the government made up of the two colonies.

In 1758, the province was divided into eight parishes, one being Christ Church, which later formed most of the territory of Chatham County. In 1777, the first regular Constitution of the State was promulgated and at this time, parishes were abolished and counties named in their place. The County is named for William Pitt, the Earl of Chatham, an English nobleman. In 1786, the Chatham Artillery, the nation's oldest active military organization, was organized.

Chatham County is the sixth largest of the State's 159 counties. The County encompasses 438 square miles and still has its early boundaries as laid down in the Revolution. The County is bounded on the north by the Savannah River and South Carolina, on the east by the Atlantic Ocean, the south by the Ogeechee River and Bryan County, and on the west by Effingham County. It is the most easterly county in the State, and has many winding estuaries, rivers, and sea islands. It has as its county seat the main port of the State, the historic City of Savannah.

## Background Information

### Economic and Financial Condition



Fountain located downtown Savannah in beautiful Forsyth park

Chatham County represents the major metropolitan area in the Southeast Georgia region; ranks sixth in population in the state and is noted for having a stable economy. The number of jobs in this coastal Metropolitan Statistical Area (MSA) are growing 27% more than that of the state and of the nation as a whole. Employment is projected to raise by 1.8 percent by the end of 2008. The County's dual personality - that of a major tourist attraction and an extraordinarily successful port - gives it a vibrancy that few other places can match. The city of Savannah also is a premier destination for national conventions and trade shows, thus convention business will be one of the area's fastest growing economic sectors.

### Population

The County's population together with the population trends for the Savannah Metropolitan Area Counties are presented below. The population of the County has grown approximately 14.9% during a 20 year period from 1980 to 2000, from 202,226 residents in 1980 to 232,347 residents in 2000. This compares with the State's total population growth of 49.9% during the same 20 year period. The most current reports state that the population in 2007 has risen to 241,411 and is estimated to reach 243,819 in 2010.

| Year | City of Savannah |                | Chatham County |                  | Effingham County |              | Bryan County |         | Total Metro Area |
|------|------------------|----------------|----------------|------------------|------------------|--------------|--------------|---------|------------------|
|      | Savannah         | Chatham County | Chatham County | Effingham County | Effingham County | Bryan County | Bryan County |         |                  |
| 1970 | 118,349          | 187,816        | 13,632         | 13,632           | 6,539            | 6,539        | 6,539        | 207,387 |                  |
| 1980 | 141,651          | 202,226        | 18,727         | 18,727           | 10,175           | 10,175       | 10,175       | 231,128 |                  |
| 1990 | 137,560          | 216,774        | 25,687         | 25,687           | 15,438           | 15,438       | 15,438       | 257,899 |                  |
| 2000 | 132,985          | 232,347        | 37,535         | 37,535           | 23,417           | 23,417       | 23,417       | 293,299 |                  |

SOURCES: U.S. Department of Commerce, Bureau of the Census

## Background Information

### Labor Force / Employment

Chatham County's unemployment rate has either been equal to or less than that of the United State's unemployment rate. The following table presents trends in employment and unemployment in Chatham County, Georgia, and the United States.

#### EMPLOYMENT DATA - CHATHAM COUNTY, GEORGIA

| Year | Total Labor Force | Employed Civilian Force | Labor Force | Chatham County      |        | State of GA         |                     | United States |  |
|------|-------------------|-------------------------|-------------|---------------------|--------|---------------------|---------------------|---------------|--|
|      |                   |                         |             | Unemployment % Rate | % Rate | Unemployment % Rate | Unemployment % Rate |               |  |
| 2000 | 110,366           | 106,275                 |             | 3.7                 | 3.7    | 4.0                 |                     |               |  |
| 2001 | 107,963           | 104,963                 |             | 3.3                 | 4.0    | 4.7                 |                     |               |  |
| 2002 | 111,134           | 106,396                 |             | 4.3                 | 5.1    | 5.8                 |                     |               |  |
| 2003 | 115,900           | 111,252                 |             | 4.1                 | 4.7    | 6.0                 |                     |               |  |
| 2004 | 120,261           | 114,535                 |             | 4.8                 | 5.0    | 5.6                 |                     |               |  |
| 2005 | 126,300           | 113,898                 |             | 4.2                 | 4.6    | 5.5                 |                     |               |  |
| 2006 | 130,060           | 124,828                 |             | 4.6                 | 5.0    | 4.8                 |                     |               |  |
| 2007 | 134,471           | 128,818                 |             | 4.2                 | 4.7    | 4.7                 |                     |               |  |

**SOURCES:** State of Georgia Departments of Labor, Labor Information Systems (2) GDOL Estimates as of July 2007

### Income

Throughout the last nine years, per capita income in Chatham County has grown steadily, keeping pace with growth in U.S. per capita income. Trends in per capita income are shown in the table that follows:

| Year | <u>PER CAPITA INCOME</u> |          |               |
|------|--------------------------|----------|---------------|
|      | Chatham County           | Georgia  | United States |
| 1999 | \$26,424                 | \$26,359 | \$27,939      |
| 2000 | \$27,804                 | \$27,989 | \$29,845      |
| 2001 | \$28,524                 | \$28,675 | \$30,575      |
| 2002 | \$29,115                 | \$28,689 | \$30,804      |
| 2003 | \$30,022                 | \$29,000 | \$31,472      |
| 2004 | \$31,691                 | \$29,782 | \$33,050      |
| 2005 | \$34,053                 | \$31,121 | \$34,471      |
| 2006 | \$34,476                 | \$31,891 | \$36,276      |
| 2007 | \$36,052                 | \$32,095 | \$38,611      |

**SOURCES:** U.S. Department of Commerce, Bureau of Economic Analysis, Regional Accounts Data. (1) Est. by GEOSTATS

## Background Information

### Manufacturing

Savannah's manufacturing sector generates an annual payroll of over \$1 billion while making a variety of consumer goods that range from yachts to corporate jets and from cookies to hair products. Two hundred and seventy companies employ some 14,498 workers who earn an average yearly wage of \$56,273. Listed below is a brief profile of the County's largest manufacturing enterprises.

| <u>MAJOR MANUFACTURING EMPLOYERS IN THE CHATHAM COUNTY AREA</u> |                          |                   |
|---|--------------------------|-------------------|
| <u>Firm</u>   | <u>Product</u>           | <u>Employment</u> |
| Gulfstream Aerospace  | Jet aircraft             | 5,000             |
| Georgia Pacific Corporation                                     | Paper products           | 1,420             |
| International Paper Corporation                                 | Paper products           | 970               |
| Great Dane Trailers   | Refrigerated trailers    | 675               |
| Kerr-McGee Pigments Savannah                                    | Titanium dioxide pigment | 470               |
| Derst Baking Company  | Food products            | 434               |
| Brasseler USA   | Dental equipment         | 400               |
| Colonial Group  | Petroleum products       | 400               |
| Imperial Sugar  | Refined sugar            | 350               |
| J.C. Bamford  | Construction equipment   | 300               |

**SOURCES:** Savannah Area Chamber of Commerce

### Tourism



View of Savannah International Trade & Convention Center from the Savannah River

The preservation and restoration of Savannah's downtown historic district and the riverfront has served as the anchor for tourism in the area. Complementing the tourism sector is convention trade. Savannah's Civic Center includes a 2,566 seat theater, an arena with a capacity of 9,600, a ballroom with a capacity of 550 and over 25,000 square feet of exhibit space. In addition, the Savannah International Trade & Convention Center has allowed Savannah to compete for larger conventions, meetings and events.

## Background Information

Chatham County has over 12,450 hotel/motel rooms and a variety of restaurants in the downtown area and throughout the Metropolitan Area. During the past ten years, the growth in retail trade and service sectors is attributable to increased tourism and reflects its importance to the County's income.

Coastal Georgia tourism again led the state in 2006 in terms of positive growth rates of all tourism measurements. Over six million, five hundred thousand people visited the area in 2006. Direct travel expenditures were over \$1.8 billion dollars. Increases in traveler expenditures is directly related to jobs. The Savannah Area Chamber of Commerce estimates nearly 22,117 area jobs were supported by tourism in 2006.

| Year | Number of Hotel rooms | Overnight visitor stays | City of Savannah & Unincorporated Area | Room Taxes - 6% | Total Direct Visitor Spending |
|------|-----------------------|-------------------------|--|-----------------|-------------------------------|
| 2001 | 10,486                | 2,444,000               |  | \$9,200,000     | \$1,059,000,000               |
| 2002 | 11,157                | 2,555,000               |  | \$9,460,000     | \$1,032,000,000               |
| 2003 | 11,153                | 2,714,000               |  | \$10,440,000    | \$1,208,000,000               |
| 2004 | 11,085                | 2,867,000               |  | \$11,480,000    | \$1,213,000,000               |
| 2005 | 11,721                | 2,845,000               |  | \$12,610,000    | \$1,385,000,000               |
| 2006 | 12,448                | 2,807,000               |  | \$13,190,000    | \$1,800,000,000               |

**SOURCES:** Savannah Area Chamber of Commerce

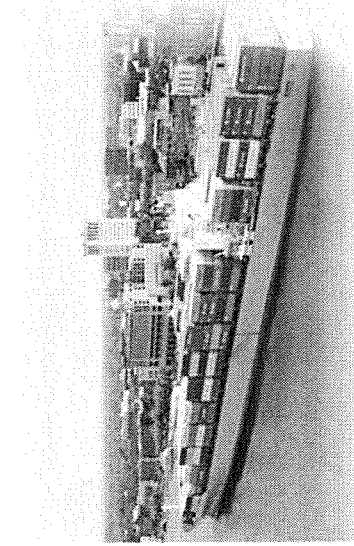
### **Transportation**

Logistics Today has rated this area "the most logistics friendly city in the nation" for the last three years - recognizing the area as a superior transportation hub. Here are some of the reasons for the honor:

- Savannah is only a few miles from Interstate 95, as well as at the eastern terminus of Interstate 16 - which gives the residents speedy access to Atlanta.
- Savannah is only two hours away from the burgeoning Florida market, yet has the cost and business advantages of a Georgia location.
- The area enjoys a strategic location on the East coast, but is far more westerly than other coastal cities; located 647 miles due south of Cleveland, Ohio.
- The taxpayers understand the importance of quality infrastructure and improvements by the continued approval of Special Purpose Local Option Sales Taxes (SPLOST).

Amtrak provides rail passenger service to the Savannah area. Freight service is provided by CSX, Georgia Central and Norfolk Southern Corporation. Trucking service is provided by over 100 motor freight carriers to the Savannah area.

## Port of Savannah



## **Background Information**

The County's continued economic progress is based to a large extent on the continuing development of the Port of Savannah. The definition of the Savannah Harbor is "that it comprises the lower 21.3 miles of the Savannah River generally forming a boundary between South Carolina and Georgia and 11.0 miles of bar channel for a total length of 32.3 miles." Savannah is the farthest inland port on the East Coast. This places Savannah within a day's haul over road or rail to many major midwestern markets; thus greatly reducing the cost of shipping; and a definite advantage for the Port of Savannah. Although the Port has a large number of private businesses having docking facilities, the Georgia Ports Authority (GPA) has the largest wharfing facilities on the east coast for handling cargo for both imports and exports on the East coast. The Port of Savannah, home to the largest single-terminal container facility of its kind on the U.S. East and Gulf coasts, is comprised of two modern, deepwater terminals: Garden City Terminal and Ocean Terminal. Together, these facilities exemplify the GPA's exacting standards of efficiency and productivity.

The Port of Savannah had a record year in fiscal 2007, becoming the fourth-busiest and fastest-growing container terminal in the United States, the Georgia Ports announced on July 30, 2007. The Georgia Ports Authority handled more than 2.3 million Twenty-foot Equivalent Unit containers handled at the Port of Savannah. In the past five years, the number of TEU containers handled has jumped 55 percent from 1.5 million handled in fiscal 2003 to 2.3 million in fiscal 2007.

The Garden City Terminal is owned and operated by the Georgia Ports Authority, the Garden City Terminal is a secured, dedicated container facility, the largest of its kind on the U.S. East and Gulf coasts. The 1,200 acre single terminal facility features 9,693 linear feet of continuous berthing and more than 1.3 million square feet of covered storage. The terminal is equipped with fifteen high-speed container cranes (4 super post-panamax and 11 post-panamax) as well as an extensive inventory of yard handling equipment.



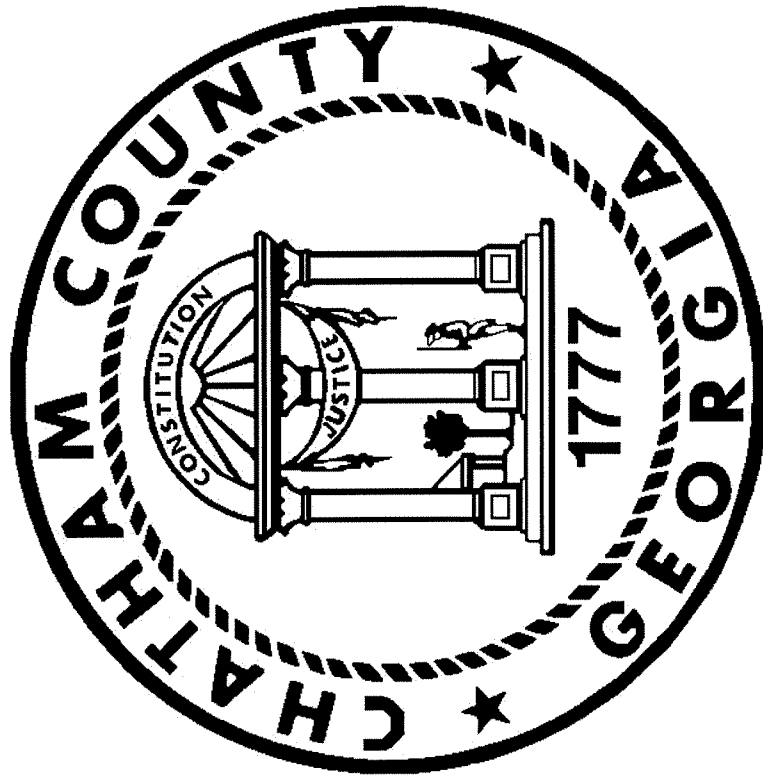
## **Background Information**

Ocean Terminal is owned and operated by the Georgia Ports Authority, the Ocean Terminal is a secured, dedicated breakbulk facility specializing in the rapid and efficient handling of a vast array of forest and solid wood products, steel, RoRo (Roll-on / Roll-off), project shipments and heavy-lift cargoes. The 208-acre (84.2-ha) facility features 6,688 linear feet (2,039 linear meters) of deepwater berthing, approximately 1.5 million square feet (138,164 square meters) of covered storage and 96 acres (38.8 ha) of open, versatile storage. In 2006, the leading imports were iron and steel, machinery, plywood, cocoa bean, granite, lumber, aluminum, and paper products. Kaolin clay, linerboard, machinery, woodpulp, military ordnance, lumber, and foodstuff were the leading exports.

The Georgia Ports Authority is in the midst of a multi-million dollar expansion of its Savannah facilities. One of the major items under construction is the Intermodal Container Transfer Facility at the Garden City Container Port. It will be the only one of its kind on the East Coast. Spanning more than 150 acres at final build out, it will include 40,000 feet of rail track and 80 acres dedicated to container storage and marshaling operation.

As one of the state's largest public employers, the GPA directly employs more than 850 people. The GPA, however, is responsible for generating far more employment throughout the state. GPA operations, together with private sector, port-related operations, account for more than 295,006 jobs statewide, billions of dollars in revenue, and income exceeding \$10.8 billion annually.

The port also includes a foreign trade zone which consists of twenty eight acres at the Savannah International Airport and twelve acres at Georgia Ports Authority facilities. It allows imports into the United States to be processed, displayed, or otherwise handled free from duties and taxes. The 2,600 acre Crossroad Business Center was recently made a part of the Zone. Only when cargo leaves the zone to be distributed in the United States is it subject to these charges. If it is exported, these costs are avoided.



## **Chatham County Services**

Chatham County provides an array of services to its citizens. An overview of these services is shown listed by department:

### **Board of Equalization**

- Conducts hearings on appeals of property valuation and assessment for taxing purposes

### **Building Safety & Regulatory Services**

- Administration and enforcement of business/occupational tax ordinances
- Inspection of business establishments for compliance with fire prevention code
- Issuance of business licenses
- Issuance of building permits and inspection of related property

### **Chatham County Health Department**

- Funds services provided by the CCHD that include immunizations
- Vital records and restaurant inspections

### **Chatham Emergency Management Agency**

- Resources provided to facilitate disaster planning and emergency response

### **Child Support Recovery Program**

- The District Attorney's office supervises the operations of the County's Child Support Recovery Program. This program provides recovery of child support payments to ensure that children are supported by their parents as demanded by law. Operating costs are recovered through a State grant.

### **Clerk of Commission**

- Provides official minutes of meeting of the Board of Commissioners to the public

### **Commissioners**

- Represent the citizens in matters of public policy and direction.

### **Cooperative Extension Service/Bamboo Farm**

- Provide programs related to agriculture, the environment and 4-H for youth and operates the Bamboo Farm facility

### **Coroner**

- Autopsy management and inquests about deaths

### **Counter Narcotics Team**

- Conduct multi-agency drug investigations; Arrest those in violation of laws

### **County Attorney**

- Represents the County in matters of law
- Interprets legal aspect of policies and existing laws

### **County Manager**

- Administers the affairs of Chatham
- Responds to citizen inquiries
- Develops and presents an annual budget
- Ensures that the policies of the Board of Commissioners are carried out

### **Court System**

Full spectrum of courts that provide service to citizens as required by State law including:

#### **Superior Court**

- Felony matters - civil and criminal

#### **Magistrate Court**

- Judicial, civil, criminal matters including issuing search and arrest warrants
- Conduct of preliminary hearings and binding cases over to higher courts

#### **Probate Court**

- Administers marriage licenses, pistol permits, court filings, committal hearings, guardianships

#### **State Court**

- Handles civil matters without regard to dollar amount and criminal misdemeanor cases; oversees the D.U.I. Court

#### **Juvenile Court**

- Handles matters involving children under age 17 or, if an abused or neglected child, under age 18

### **Clerk of Superior Court**

- Accept and maintain all Superior Court records, provide record information to the public and the law enforcement community

### **Recorders Court**

- Process traffic and criminal accusations, provides warrants for the public and for law enforcement, process fine payments

### **Court Administrator**

- Manages the administration of Superior Court.

### **Law Library**

- Provides a library of legal data for citizens

### **Department of Family & Children's Services**

- Resources provided to DFACS for its administration of services

### **District Attorney**

- Represents the State in criminal cases as well as preliminary hearings in committal courts
- Victim Witness program to assist crime victims
- Alternative dispute resolution program intended to reduce court caseloads and bring resolution among parties
- Grand Jury

### **Elections Board**

- Conducts all county, municipal and special elections; Handles financial disclosures of candidates; Maintains maps of precinct lines; Provides records for public use

### **EMS**

- Oversight of the agreement between the County and its contracted EMS provider to ensure that contract standards/ambulance response times are maintained for the County's citizens

### **Engineering**

- Construction of roads and facilities approved by SPLOST referendums
- Provides traffic engineering services to the public
- Review of residential and commercial development plans
- Issues development permits
- Ensures compliance with local and State ordinances

**Finance**

- Provide financial disclosure to citizens and investors
- Provide reports to management for decision making needs
- Provide tax reporting to vendors and employees (1099s, W2s)
- Provide disbursements to vendors and employees
- Develop annual operating budgets and multi-year capital plans and forecasts

**Greenbriar Children's Center**

- Resources provided to Greenbriar to assist abused and neglected children

**Human Resources & Services**

- Handles matters of recruitment, hiring and administrative processing of county employees and retirees
- Ensures equal employment opportunity
- Manages benefit plans
- Procures goods and services in a cost effective manner in accordance with the purchasing ordinance
- Manages the County's vehicle fleet and fleet repairs
- Maintains and repairs county buildings and facilities
- Provides a drivers training program for employee safety

**ICS**

- Provides computer-related services to County departments
- Provides radio and communication services to County departments
- Provides the County's records management facility

**Indigent Health Care**

- Primary medical services for indigent citizens provide at the Curtis V. Cooper facility

**Internal Audit**

- Independent appraisal function that reviews the financial and performance activities of county departments

**Live Oak Public Library**

- The County provides resources to the Live Oak Public Library to enhance the Library's service level to the Public.

### **Metropolitan Planning Commission**

- Resources provided to MPC for the development of comprehensive zoning and land use plans for the community

### **Mosquito Control**

- Mosquito abatement program
- Reduce mosquito breeding grounds by ditching and drainage
- Spray trucks and aircraft
- Joint use of helicopter with local law enforcement as needed

### **Parks & Recreation**

- Safe and attractive recreational facilities
- Recreational programs for citizens
- Aquatics Center
- Weightlifting Center
- Frank G. Murray Community Center
- Tybee Pier & Pavilion
- Neighborhood parks - 11
- Community parks - 4
- Ball fields - 36
- Lighted tennis courts - 18
- Sports complexes - 3
- Boat ramps - 20
- Fishing piers - 4
- Fitness trail (3 mile) -1
- Beach front areas - 2

### **Public Defender**

- Legal representation for those indigent persons accused of felony offenses
- Management of county's panel of attorneys for indigent representation
- Legal defense of indigent persons arrested in Juvenile Court delinquency proceedings

### **Public Works**

- Safe road conditions; Effective drainage systems
- Safe drinking water and sanitary sewage
- Recycling facilities
- Curbside collection of yard waste and bulky items
- Street lighting at intersections of major roadways
- Energy Costs for traffic signals in unincorporated County
- Round-the-clock operation of drawbridges over intercoastal waterways

### **Savannah-Chatham Metropolitan Police**

- Enforcement of laws and ordinances of Chatham County
- Respond to citizen emergencies and concerns
- Investigate facts surrounding breach of law
- Patrol and enforce traffic laws
- Conduct drug investigations and arrest violators
- Participate in the Crimestoppers Program
- Enforce laws related to waterways
- Cooperate with other law enforcement agencies in patrols and investigations
- Provide an animal complaint desk
- Investigate reports of animal cruelty
- Impound sick and un-claimed animals in a sanitary animal shelter

### **Sheriff & Detention Center**

- Protection of life and property
- Incarceration of inmates for the public good while providing a safe and healthy environment for prisoners
- Court warrants/subpoenas
- Courtroom security

### **Summer Bonanza**

- Resources provided to a nonprofit organization for summer youth



### **Tax Assessor**

- Identification and appraisal of real and personal property in Chatham County including non-homesteaded mobile homes
- Receives tax returns and exemption applications for Chatham County, the Board of Education and the City of Savannah
- Prepares and certifies the official annual tax digest

### **Tax Commissioner**

- Provide automobile tag renewal at four facilities
- Bill and collect ad valorem taxes for the State or Georgia, the Savannah-Chatham Board of Education, the Chatham Area Transit Authority, the County and some of its municipalities
- Pursue collection of delinquent taxes
- Collect street lighting fees

### **Teleride**

- The County provides funding for public transportation for the Chatham Area Transit Authority's Teleride program.

### **Voter Registration**

- Registers eligible citizens to vote
- Maintains a current list for all municipalities of eligible voters
- Maintains permanent records on all county voters

### **Youth Commission**

- Provides youth with an opportunity to participate in local government in their community

