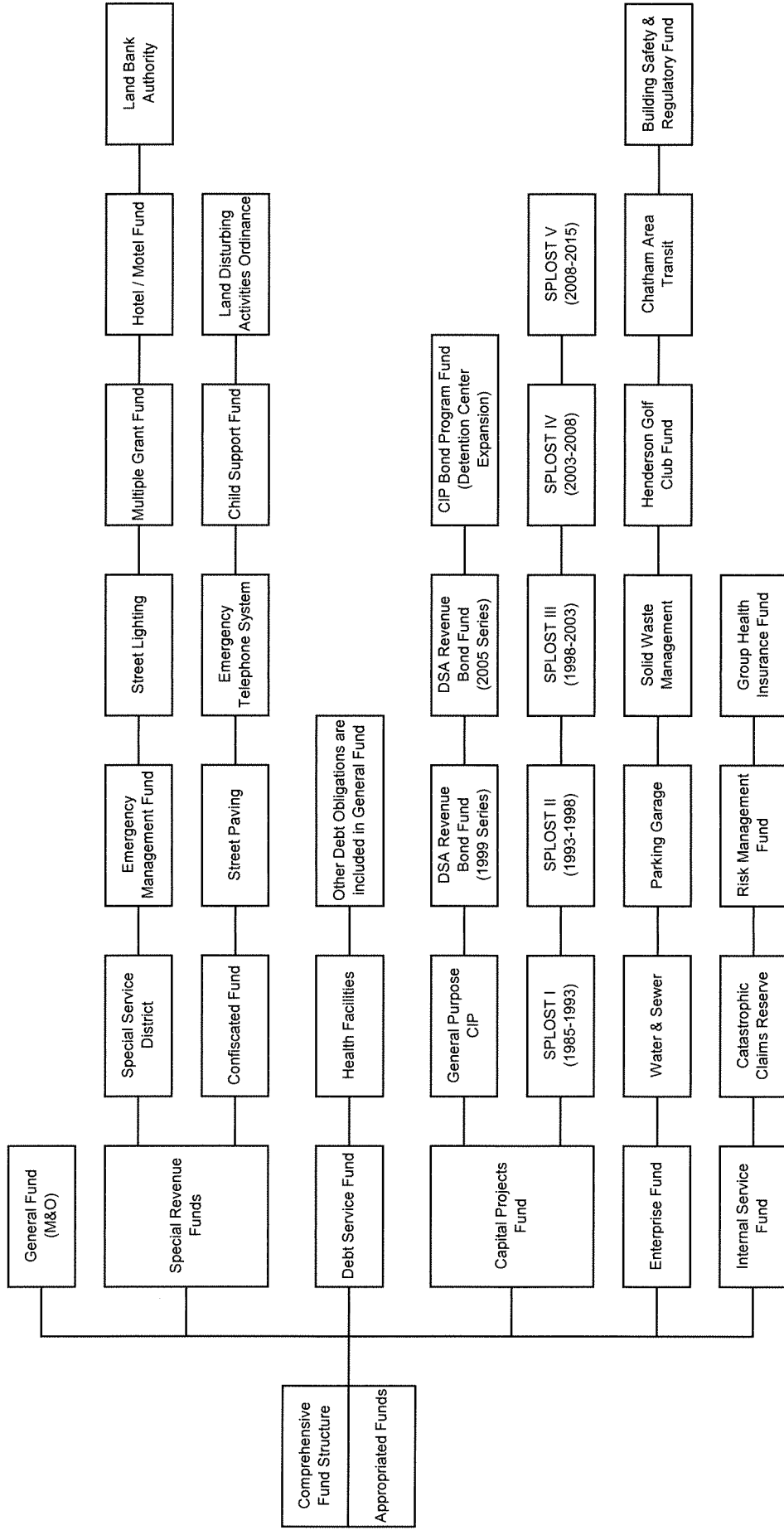


**CHATHAM COUNTY, GEORGIA**  
**FISCAL YEAR 2008 / 2009**  
**ALL FUNDS COMBINED BUDGET OVERVIEW**

# CHATHAM COUNTY BUDGET FUND STRUCTURE

## FISCAL YEAR 2008 / 2009 BUDGET



**CHATHAM COUNTY, GEORGIA**  
**FY 2008 / 2009 ADOPTED BUDGET - ALL FUNDS COMBINED**

<b>FUNDS WHICH FINANCE: OPERATIONS</b>	<b>2007 / 2008 Amended</b>	<b>2008 / 2009 Adopted</b>
GENERAL M & O	\$ 149,393,517	\$ 150,374,850
<b>SPECIAL REVENUE FUNDS</b>		
Special Service District	\$ 27,000,955	\$ 29,260,154
Confiscated Fund	\$ 582,735	\$ 100,000
Emergency Management Fund	\$ 1,196,026	\$ 991,280
Street Paving Fund	\$ 296,490	\$ 295,258
Street Lighting Fund	\$ 600,084	\$ 617,720
Emergency Telephone Fund	\$ 2,740,483	\$ 2,450,733
Multiple Grant Fund	\$ 853,806	\$ 112,800
Child Support Fund	\$ 2,798,813	\$ 3,083,120
Hotel / Motel Tax Fund	\$ 1,291,320	\$ 1,291,320
Land Disturbing Activities Ord.	\$ 541,478	\$ 518,165
Land Bank Authority	\$ 506,997	\$ 416,693

<b>FUNDS WHICH FINANCE: CAPITAL IMPROVEMENTS &amp; SPECIAL PROJECTS</b>	<b>2007 / 2008 Amended</b>	<b>2008 / 2009 Adopted</b>
1 % Sales Tax Fund (85 - 93)	\$ 21,721,531	\$ 16,151,415
1 % Sales Tax Fund (93 - 98)	\$ 8,503,754	\$ 8,322,824
1 % Sales Tax Fund (98 - 03)	\$ 77,318,314	\$ 76,533,997
1 % Sales Tax Fund (03 - 08)	\$ 110,540,237	\$ 111,405,670
1 % Sales Tax Fund (08 - 15)	\$ -	\$ 36,568,273
General Purpose CIP Fund	\$ 26,102,229	\$ 4,420,550
DSA Revenue Bonds - Series 1999	\$ 655,888	\$ 593,945
DSA Revenue Bonds - Series 2005	\$ 7,409,411	\$ 4,174,378
CIP Bond Prog.- Detention Center Expansio	\$ 103,295	\$ 10,000,000

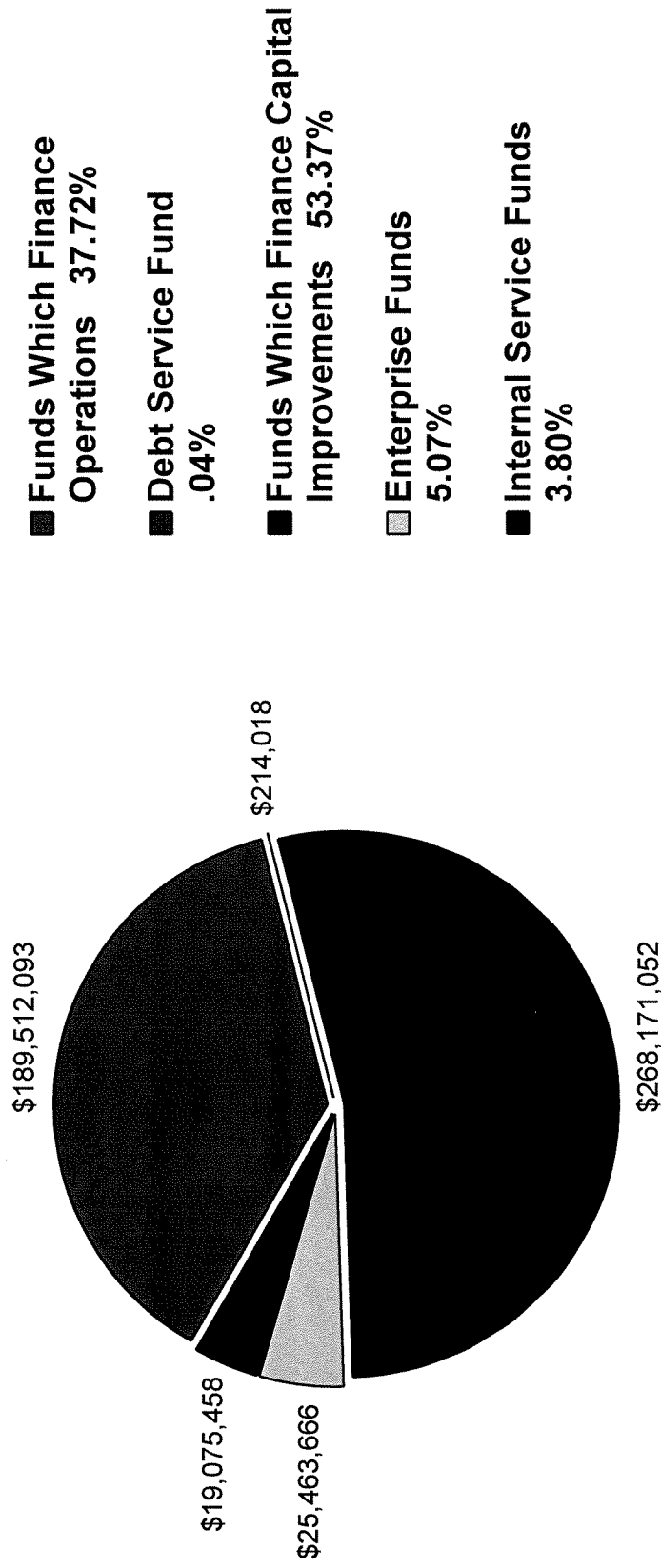
<b>DEBT SERVICE FUNDS</b>	<b>2007 / 2008 Amended</b>	<b>2008 / 2009 Adopted</b>
Chatham County Hospital Authority	\$ 313,091	\$ 214,018

<b>ENTERPRISE FUNDS</b>	<b>2007 / 2008 Amended</b>	<b>2008 / 2009 Adopted</b>
Water & Sewer Revenue Fund	\$ 2,406,119	\$ 2,509,751
Solid Waste Mgmt. Fund	\$ 4,031,148	\$ 3,645,963
C A T Authority Fund	\$ 13,996,242	\$ 17,032,826
Parking Garage Revenue Fund	\$ 311,865	\$ 325,526
Henderson Golf Club Fund	\$ 949,600	\$ 949,600
Building Safety & Reg. Svcs. Fund	\$ 1,839,276	\$ 1,000,000

<b>INTERNAL SERVICE FUNDS</b>	<b>2007 / 2008 Amended</b>	<b>2008 / 2009 Adopted</b>
Catastrophic Claims Reserve Fund	\$ 15,000	\$ 15,000
Risk Management Fund	\$ 3,744,538	\$ 3,170,730
Group Health Insurance Fund	\$ 15,279,100	\$ 15,889,728

<b>TOTAL BUDGET</b>	<b>\$ 483,043,342</b>	<b>\$ 502,436,287</b>
---------------------	-----------------------	-----------------------

# FY 08/09 All Funds Combined



CHATHAM COUNTY FY 2008 / 2009 ADOPTED BUDGET SUMMARY  
 FUND COMPARISON (EXPENDITURES / TRANSFERS OUT)

CATEGORY	FUND	2004 / 2005 Actual	2005 / 2006 Actual	2006 / 2007 Actual	2007 / 2008 Amended	2008 / 2009 Adopted
General M & O		\$ 102,374,428	\$ 121,855,538	\$ 130,192,958	\$ 149,393,517	\$ 150,374,850
Special Revenue Funds	Special Service District	\$ 18,773,146	\$ 26,256,323	\$ 24,337,531	\$ 27,000,955	\$ 29,260,154
	Confiscated Fund	\$ 154,568	\$ 369,930	\$ 223,376	\$ 582,735	\$ 100,000
	Emergency Management Fund	\$ 641,000	\$ 971,177	\$ 829,746	\$ 1,196,026	\$ 991,280
	Street Paving Fund	\$ 4,638	\$ 420	\$ 2,012	\$ 296,490	\$ 295,258
	Street Lighting Fund	\$ 371,168	\$ 397,278	\$ 434,648	\$ 600,084	\$ 617,720
	Emergency Telephone Fund	\$ 1,798,271	\$ 1,752,397	\$ 2,915,184	\$ 2,740,483	\$ 2,450,733
	Multiple Grant Fund	\$ 1,623,986	\$ 1,710,890	\$ 904,560	\$ 853,806	\$ 112,800
	Child Support Fund	\$ 2,620,158	\$ 2,703,044	\$ 2,733,956	\$ 2,798,813	\$ 3,083,120
	Hotel / Motel Tax Fund	\$ 1,411,518	\$ 1,337,417	\$ 1,526,912	\$ 1,291,320	\$ 1,291,320
	Land Disturbing Activities Ord.	\$ 361,157	\$ 363,645	\$ 445,503	\$ 541,478	\$ 518,165
	Land Bank Authority	\$ 489,462	\$ 276,533	\$ 456,755	\$ 506,997	\$ 416,693
Debt Service Funds:	Chatham County Hospital Authority	\$ 17,782,158	\$ 6,776,705	\$ 214,019	\$ 313,091	\$ 214,018
Capital Projects Funds	Sales Tax I (85-93)	\$ 4,132,246	\$ 2,444,007	\$ 3,185,741	\$ 21,721,531	\$ 16,151,415
	Sales Tax II (93 - 98)	\$ 1,913,232	\$ (142,028)	\$ 2,789,732	\$ 8,503,754	\$ 8,322,824
	Sales Tax III (98 - 03)	\$ 9,531,357	\$ 4,121,988	\$ 7,480,261	\$ 77,318,314	\$ 76,533,997
	Sales Tax IV (03 - 08)	\$ 28,669,950	\$ 40,503,496	\$ 48,261,491	\$ 110,540,228	\$ 111,405,670
	Sales Tax V (08 - 15)	\$ -	\$ -	\$ -	\$ -	\$ 36,568,273
	General Purpose CIP	\$ 2,753,720	\$ 2,964,519	\$ 5,433,581	\$ 26,102,229	\$ 4,420,550
	DSA Revenue Bonds - Series 1999	\$ 1,001,813	\$ 1,767,257	\$ 401,289	\$ 655,888	\$ 593,945
	DSA Revenue Bonds - Series 2005	\$ 163,861	\$ 2,543,114	\$ 4,158,413	\$ 7,409,411	\$ 4,174,378
	Capital Improvement Bond Program (Jail Expansion)	\$ -	\$ -	\$ -	\$ 103,295	\$ 10,000,000
Enterprise Funds:	Water & Sewer	\$ 1,691,215	\$ 1,829,211	\$ 1,734,867	\$ 2,406,119	\$ 2,509,751
	CAT Transit Authority	\$ 15,513,274	\$ 15,820,334	\$ 16,800,605	\$ 13,996,242	\$ 17,032,826
	Parking Garage	\$ 215,646	\$ 220,921	\$ 282,492	\$ 311,865	\$ 325,526
	Solid Waste	\$ 2,090,871	\$ 3,013,304	\$ 2,386,961	\$ 4,031,148	\$ 3,645,963
	Henderson	\$ 946,652	\$ 907,989	\$ 942,188	\$ 949,600	\$ 949,600
	Building Safety & Reg.	\$ 1,240,503	\$ 1,463,926	\$ 1,399,667	\$ 1,839,276	\$ 1,000,000
Internal Service Funds:	Catastrophic Claims	\$ 161,744	\$ 214,063	\$ -	\$ 15,000	\$ 15,000
	Risk Management Fund	\$ -	\$ 3,667,484	\$ 2,758,113	\$ 3,744,538	\$ 3,170,730
	Health Insurance Fund	\$ 13,163,221	\$ 15,139,719	\$ 17,695,449	\$ 15,279,100	\$ 15,889,728
	Total	\$ 231,594,963	\$ 261,250,600	\$ 280,928,010	\$ 483,043,333	\$ 502,436,287

**CHATHAM COUNTY, GEORGIA**  
**FY 2008 / 2009 BUDGET**  
**REVENUES, EXPENDITURES, AND OTHER SOURCES/USES SUMMARY**

**FY 2008 / 2009 Revenues:**

Revenues by Type	Total All Funds
Taxes	\$ 216,459,894
Licenses & Permits	3,196,040
Intergovernmental	12,125,339
Charges for Services	37,357,335
Fines & Fees	5,683,855
Interest Income	1,478,258
Miscellaneous	20,398,299
Transfers In	8,499,213
Fund Balance/Reserve/Retained Earnings	197,238,054
<b>TOTAL</b>	<b>\$ 502,436,287</b>

**FY 2008 / 2009 Expenditures:**

Expenditures by Function	Total All Funds
General Government	\$ 31,156,620
Judiciary	30,532,560
Public Safety	125,205,366
Public Works	153,153,114
Health & Welfare	11,163,868
Culture & Recreation	33,872,214
Housing & Development	3,112,083
Other Government Services	42,604,927
Capital Outlay	39,642,365
Public Transportation	17,032,826
Debt Service	5,962,583
Permits/Zoning/Inspection	1,000,000
Transfers Out	7,997,761
<b>TOTAL</b>	<b>\$ 502,436,287</b>

**FY 2006 / 2007  
CONSOLIDATED OPERATION ACTUAL REVENUES**

Sources	General Fund	Special Service District	1% Sales Tax 1985-1993	1% Sales Tax 1993-1998	1% Sales Tax 1998-2003	1% Sales Tax 2003-2008	1% Sales Tax 2008-2015	Other Non-major Governmental Funds	Chatham Area Transit	Solid Waste Fund	Other Non-major Enterprise Funds	Internal Service Funds	Total
Property Taxes	102,517,178	13,632,926				64,306,690		1,526,912					116,150,104
Other Taxes	11,715,201	5,676,616											83,225,419
Comm., Penalties, Etc.	1,330,130							217,241					1,330,130
Licenses & Permits	961,866	1,286,653						113,437					2,465,760
Fines & Fees	3,700,458	1,965,979				1,720		3,893,029					5,779,874
Revenue - Other Government	5,536,039	1,872,879	132,424	469,588				2,626,343		624,704			11,905,679
Charges For Services	6,919,502	362,917											10,533,466
Indirect Cost Allocation	1,961,116												1,961,116
Other Revenue	446,045	10,385	101,665		111			3,392,263		15,944		17,567,514	21,534,057
Investment Earnings	908,508	513,588	1,175,852	438,307	4,206,170	3,021,739		1,148,813	418,644		195,860	286,773	12,314,254
Water & Sewer Sales											267,945		1,922,083
Parking Revenues									15,318,531				15,318,531
Transit Revenues													781,391
Golf Course Fees													961,674
Construction Permits													961,674
<b>Total Revenue</b>	<b>\$ 135,996,043</b>	<b>\$ 25,321,943</b>	<b>\$ 1,409,941</b>	<b>\$ 907,895</b>	<b>\$ 4,206,281</b>	<b>\$ 67,330,279</b>	<b>\$ 0</b>	<b>\$ 12,918,038</b>	<b>\$ 15,318,531</b>	<b>\$ 1,059,292</b>	<b>\$ 4,128,953</b>	<b>\$ 17,854,287</b>	<b>\$ 286,451,483</b>
Transfers In	481,602	790,456						10,198,479		1,729,020	704,514	3,194,612	18,657,923
Fund Balance Reserve / Retained Earnings			1,775,800	1,881,837	3,273,980								6,931,617
<b>Total Appropriations</b>	<b>\$ 136,477,645</b>	<b>\$ 26,112,399</b>	<b>\$ 3,185,741</b>	<b>\$ 2,789,732</b>	<b>\$ 7,480,261</b>	<b>\$ 67,330,279</b>	<b>\$ 0</b>	<b>\$ 23,116,517</b>	<b>\$ 15,318,531</b>	<b>\$ 2,788,312</b>	<b>\$ 4,833,467</b>	<b>\$ 21,048,899</b>	<b>\$ 310,481,783</b>

**CONSOLIDATED OPERATION ACTUAL EXPENDITURES / EXPENSES**

Uses	General Fund	Special Service District	1% Sales Tax 1985-1993	1% Sales Tax 1993-1998	1% Sales Tax 1998-2003	1% Sales Tax 2003-2008	1% Sales Tax 2008-2015	Other Non-major Governmental Funds	Chatham Area Transit	Solid Waste Fund	Other Non-major Enterprise Funds	Internal Service Funds	Total
General Government	25,594,449	2,952,218						3,445					28,550,112
Judiciary	22,483,204	580,044						240,953					23,304,201
Public Safety	42,150,808	11,330,492					36,568,273	7,122,908					97,172,481
Public Works	1,051,649	4,775,757						633,835					6,461,241
Health & Welfare	9,414,523							42,341					9,414,523
Culture & Recreation	9,280,696							1,665,714					9,323,037
Housing & Development	371,731	1,141,634											3,179,079
Insurance & Bonds													0
Other Gov. Svcs.													25,802,310
Capital Outlay			3,185,741	2,789,832	7,480,261	48,261,491				2,386,961	2,961,787	20,453,562	71,710,608
Public Transportation									16,800,605				16,800,605
Depreciation													0
Debt Service	5,501,326	62,116						186,394					5,749,836
Permits / Zoning / Inspection													1,372,667
<b>Total Expenditures / Expenses</b>	<b>\$ 115,848,386</b>	<b>\$ 20,842,261</b>	<b>\$ 3,185,741</b>	<b>\$ 2,789,832</b>	<b>\$ 7,480,261</b>	<b>\$ 48,261,491</b>	<b>\$ 36,568,273</b>	<b>\$ 19,898,873</b>	<b>\$ 16,800,605</b>	<b>\$ 2,386,961</b>	<b>\$ 4,334,454</b>	<b>\$ 20,453,562</b>	<b>\$ 298,840,700</b>
Transfers Out	14,344,572	3,495,270						791,081			27,000		18,657,923
<b>Total Appropriations</b>	<b>\$ 130,192,958</b>	<b>\$ 24,337,531</b>	<b>\$ 3,185,741</b>	<b>\$ 2,789,832</b>	<b>\$ 7,480,261</b>	<b>\$ 48,261,491</b>	<b>\$ 36,568,273</b>	<b>\$ 20,679,954</b>	<b>\$ 16,800,605</b>	<b>\$ 2,386,961</b>	<b>\$ 4,361,454</b>	<b>\$ 20,453,562</b>	<b>\$ 317,499,623</b>

**FY 2007 / 2008 AMENDED BUDGET  
CONSOLIDATED OPERATION BUDGET REVENUES**

Sources	General Fund	Special Service District	1% Sales Tax 1985-1993	1% Sales Tax 1993-1998	1% Sales Tax 1998-2003	1% Sales Tax 2003-2008	1% Sales Tax 2008-2015	Other Non-major Governmental Funds	Chatham Area Transit	Solid Waste Fund	Other Non-major Enterprise Funds	Internal Service Funds	Total
Property Taxes	108,831,824	14,587,791					0	1,291,320					123,419,615
Other Taxes	11,180,000	5,365,000				41,075,050							58,911,370
Comm., Penalties, Etc.	926,900												926,900
Licenses & Permits	864,500	1,350,000						603,885					2,214,500
Fines & Fees	3,566,481	2,090,000						3,624,219					6,260,366
Revenue - Other Government	5,241,072	1,240,212											10,105,503
Charges For Services	6,803,907	405,995											7,701,902
Indirect Cost Allocation	2,359,390												2,359,390
Other Revenue	519,440	5,000						4,039,632				15,434,100	20,042,872
Investment Earnings	550,000	365,000						3,130					1,218,130
Water & Sewer Sales													2,335,085
Parking Revenues													305,920
Transit Revenues									13,996,242				13,996,242
Golf Course Fees													949,600
Construction Permits													1,839,276
<b>Total Revenue</b>	<b>\$ 140,843,514</b>	<b>\$ 25,408,998</b>	<b>\$ 0</b>	<b>\$ 0</b>	<b>\$ 0</b>	<b>\$ 41,075,050</b>	<b>\$ 0</b>	<b>\$ 9,562,186</b>	<b>\$ 13,996,242</b>	<b>\$ 836,700</b>	<b>\$ 5,429,881</b>	<b>\$ 15,434,100</b>	<b>\$ 252,586,671</b>
Transfers In	684,377	929,419						6,280,911					13,812,016
Fund Balance Reserve / Retained Earnings	7,865,626	662,538	21,721,531	8,503,754	77,318,314	69,465,187		30,149,049		745,139	76,979	136,538	216,644,655
<b>Total Appropriations</b>	<b>\$ 149,393,517</b>	<b>\$ 27,000,955</b>	<b>\$ 21,721,531</b>	<b>\$ 8,503,754</b>	<b>\$ 77,318,314</b>	<b>\$ 110,540,237</b>	<b>\$ 0</b>	<b>\$ 45,992,146</b>	<b>\$ 13,996,242</b>	<b>\$ 4,031,148</b>	<b>\$ 5,506,860</b>	<b>\$ 19,038,638</b>	<b>\$ 483,043,342</b>

**CONSOLIDATED OPERATION BUDGET EXPENDITURES / EXPENSES**

Uses	General Fund	Special Service District	1% Sales Tax 1985-1993	1% Sales Tax 1993-1998	1% Sales Tax 1998-2003	1% Sales Tax 2003-2008	1% Sales Tax 2008-2015	Other Non-major Governmental Funds	Chatham Area Transit	Solid Waste Fund	Other Non-major Enterprise Funds	Internal Service Funds	Total
General Government	26,850,219	2,498,912						4,577,533					33,926,664
Judiciary	26,125,665	1,154,632						4,351,885					31,632,182
Public Safety	48,387,594	12,305,042						12,387,262					73,079,898
Public Works	1,576,028	5,542,577						4,354,333		2,997,499			14,470,437
Health & Welfare	10,598,882							912,474					11,511,356
Culture & Recreation	10,884,949							6,622,500					17,507,449
Housing & Development	432,891	2,158,122						543,488					4,973,777
Insurance & Bonds													0
Other Gov. Svcs.	11,087,600	1,182,785	21,721,531	8,503,754	77,318,314	110,540,237		11,929,580				19,038,638	46,712,617
Capital Outlay													218,977,690
Public Transportation									13,996,242				13,996,242
Depreciation													333,365
Debt Service	5,584,930	87,120											5,985,141
Permits / Zoning / Inspection													0
<b>Total Expenditures / Expenses</b>	<b>\$ 141,528,758</b>	<b>\$ 24,929,190</b>	<b>\$ 21,721,531</b>	<b>\$ 8,503,754</b>	<b>\$ 77,318,314</b>	<b>\$ 110,540,237</b>	<b>\$ 0</b>	<b>\$ 45,992,146</b>	<b>\$ 13,996,242</b>	<b>\$ 4,031,148</b>	<b>\$ 5,506,860</b>	<b>\$ 19,038,638</b>	<b>\$ 473,106,818</b>
Transfers Out	7,864,759	2,071,765											9,936,524
<b>Total Appropriations</b>	<b>\$ 149,393,517</b>	<b>\$ 27,000,955</b>	<b>\$ 21,721,531</b>	<b>\$ 8,503,754</b>	<b>\$ 77,318,314</b>	<b>\$ 110,540,237</b>	<b>\$ 0</b>	<b>\$ 45,992,146</b>	<b>\$ 13,996,242</b>	<b>\$ 4,031,148</b>	<b>\$ 5,506,860</b>	<b>\$ 19,038,638</b>	<b>\$ 483,043,342</b>



**FY 2008 / 2009 BUDGET  
CONSOLIDATED OPERATION BUDGET REVENUES**

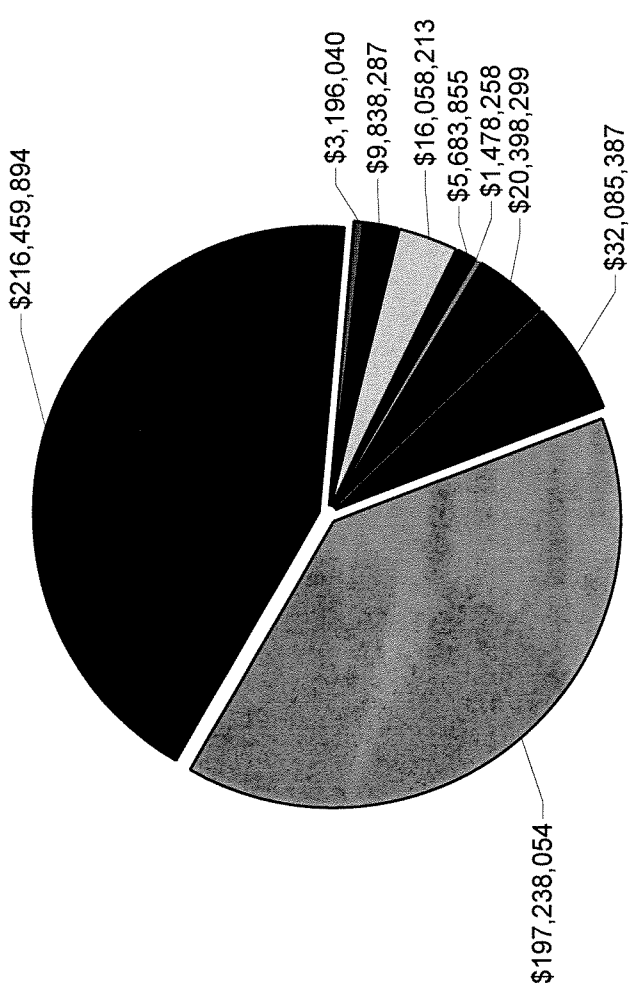
Sources	General Fund	Special Service District	1% Sales Tax 1995-1993	1% Sales Tax 1993-1998	1% Sales Tax 1998-2003	1% Sales Tax 2003-2008	1% Sales Tax 2008-2015	Other Non-major Governmental Funds	Chatham Area Transit	Solid Waste Fund	Other Non-major Enterprise Funds	Internal Service Funds	Total
Property Taxes	117,136,366	15,290,463				28,246,072	36,568,273	1,291,320					132,428,829
Other Taxes	11,375,000	5,617,500											83,098,165
Comm., Penalties, Etc.	932,900												932,900
Licenses & Permits	910,040	1,286,000											2,196,040
Fines & Fees	3,286,190	1,834,500						563,165					5,683,855
Revenue - Other Government	5,459,339	1,253,028						3,125,920					9,838,287
Charges For Services	7,421,674	342,751											8,324,425
Indirect Cost Allocation	2,613,880									560,000			2,613,880
Other Revenue	450,218	5,000						12,348,584		370,000		15,929,728	28,733,530
Investment Earnings	360,743	350,000						108,130				115,000	1,478,258
Water & Sewer Sales													2,142,205
Parking Revenues									17,032,826				246,220
Transit Revenues													949,600
Golf Course Fees													17,032,826
Construction Permits											1,000,000		1,000,000
<b>Total Revenue</b>	<b>\$ 149,948,350</b>	<b>\$ 25,979,242</b>	<b>\$ 0</b>	<b>\$ 0</b>	<b>\$ 0</b>	<b>\$ 28,246,072</b>	<b>\$ 36,568,273</b>	<b>\$ 17,437,119</b>	<b>\$ 17,032,826</b>	<b>\$ 930,000</b>	<b>\$ 4,512,410</b>	<b>\$ 16,044,728</b>	<b>\$ 296,689,020</b>
Transfers In	428,500	672,660						1,848,760				2,835,330	8,499,213
Fund Balance Reserve / Retained Earnings		2,608,252	16,151,415	8,322,824	76,533,997	83,159,598		9,994,101			272,467	195,400	197,238,054
<b>Total Appropriations</b>	<b>\$ 150,374,850</b>	<b>\$ 29,260,154</b>	<b>\$ 16,151,415</b>	<b>\$ 8,322,824</b>	<b>\$ 76,533,997</b>	<b>\$ 111,405,670</b>	<b>\$ 36,568,273</b>	<b>\$ 29,279,980</b>	<b>\$ 17,032,826</b>	<b>\$ 3,645,963</b>	<b>\$ 4,784,877</b>	<b>\$ 19,075,458</b>	<b>\$ 502,436,287</b>

**CONSOLIDATED OPERATION BUDGET EXPENDITURES / EXPENSES**

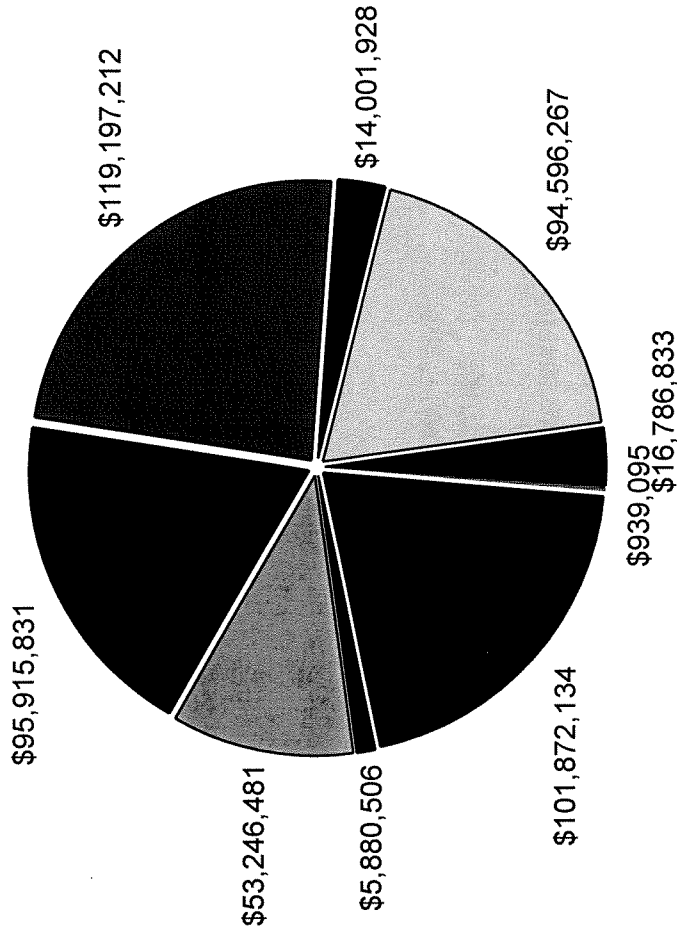
Uses	General Fund	Special Service District	1% Sales Tax 1995-1993	1% Sales Tax 1993-1998	1% Sales Tax 1998-2003	1% Sales Tax 2003-2008	1% Sales Tax 2008-2015	Other Non-major Governmental Funds	Chatham Area Transit	Solid Waste Fund	Other Non-major Enterprise Funds	Internal Service Funds	Total
General Government	26,849,205	2,602,259			97,393	7,500		1,600,263					31,156,620
Judiciary	28,520,140	929,300					3,083,120						30,532,560
Public Safety	50,636,063	13,594,218		106,694		6,287,215	18,012,903						125,205,366
Public Works	1,453,364	5,653,304		7,068,567	73,716,720	64,368,181							153,153,114
Health & Welfare	10,971,898			297,660	2,213,945	17,581,824							11,163,868
Culture & Recreation	11,298,334	2,023,510											33,872,214
Housing & Development	570,408												3,112,083
Insurance & Bonds													0
Other Gov. Svcs.	11,271,415	1,515,260	16,151,415	859,903	505,939	23,170,950				3,325,963	3,784,877	19,075,458	42,604,927
Capital Outlay										320,000			39,642,365
Public Transportation									17,032,826				17,032,826
Depreciation													0
Debt Service	5,661,445	87,120											5,962,583
Permits / Zoning / Inspection											1,000,000		1,000,000
<b>Total Expenditures / Expenses</b>	<b>\$ 145,232,272</b>	<b>\$ 26,404,971</b>	<b>\$ 16,151,415</b>	<b>\$ 8,322,824</b>	<b>\$ 76,533,997</b>	<b>\$ 111,405,670</b>	<b>\$ 36,568,273</b>	<b>\$ 29,279,980</b>	<b>\$ 17,032,826</b>	<b>\$ 3,645,963</b>	<b>\$ 4,784,877</b>	<b>\$ 19,075,458</b>	<b>\$ 494,436,526</b>
Transfers Out	5,142,578	2,855,183											7,997,761
<b>Total Appropriations</b>	<b>\$ 150,374,850</b>	<b>\$ 29,260,154</b>	<b>\$ 16,151,415</b>	<b>\$ 8,322,824</b>	<b>\$ 76,533,997</b>	<b>\$ 111,405,670</b>	<b>\$ 36,568,273</b>	<b>\$ 29,279,980</b>	<b>\$ 17,032,826</b>	<b>\$ 3,645,963</b>	<b>\$ 4,784,877</b>	<b>\$ 19,075,458</b>	<b>\$ 502,436,287</b>

# FY 08/09 All Funds Combined by Revenue Category

- Tax Revenues 40.06%
- License & Permit Revenues .91%
- Inter Governmental Revenues 2.16%
- Charges For Services 2.92%
- Fines & Forfeitures Revenue 1.34%
- Interest Revenue .81%
- Miscellaneous Revenue 8.06%
- Other Funding Source Revenues 1.29%
- Fund Balance 42.46%



# FY 08/09 All Funds Combined by Expenditure Type



- Personal Services 20.42%
- Purchased/Contracted Svcs. 22.54%
- Supplies Expenditures 2.83%
- Capital Outlay 28.65%
- Interfund/Dept. Svcs. 3.57%
- Depreciation .21%
- Other Costs 16.73%
- Debt Service 1.30%
- Other Financing Uses 3.74%

# CHATHAM COUNTY, GEORGIA FY 2008 / 2009 BUDGET

## EXPENDITURES - ALL FUNDS

- Chatham County FY 2008/2009 budget for all funds totals \$502,436,287, an increase of \$20,407,954 or 4.23 percent over FY 2007 / 2008.
- General Fund (M&O) FY 2008 / 2009 budget totals \$150,374,850, an increase of \$1,057,333 or .71 percent over FY 2007 / 2008 budget.
- Special Service District Fund FY 2008 / 2009 budget totals \$29,260,154 an increase of \$2,464,199 or 9.2 percent over FY 2007 / 2008 budget.
- Confiscated Fund FY 2008 / 2009 budget totals \$100,000, a decrease of 82.84 percent from FY 2007 / 2008 budget.
- Chatham Emergency Management Fund FY 2008 / 2009 budget totals \$991,280 which is a decrease of \$204,746 or 17.12 percent from FY 2007 / 2008.
- Street Lighting Fund FY 2008 / 2009 budget totals \$617,720 an increase of 2.94 percent over FY2007 / 2008.
- Street Paving Fund FY 2008 / 2009 budget totals \$295,258 a decrease of .42 percent from FY 2007 / 2008.
- Emergency Telephone System Fund FY 2008 / 2009 budget totals \$2,450,733, an increase of 1.29 percent over FY 2007 / 2008.
- Multiple Grants Special Revenue Fund FY 2008 / 2009 budget totals \$112,800, a decrease of 86.79 percent from FY 2007 / 2008.
- Child Support Recovery Fund adopted budget for FY 2008 / 2009 is \$3,083,120 an increase of \$284,307 or 10.16 percent over FY 2007 / 2008.
- Hotel / Motel Special Revenue Tax Fund FY 2008 / 2009 totals \$1,291,320, the same as FY 2007 / 2008.
- Land Disturbing Activities Ordinance Fund FY 2008 / 2009 budget totals \$518,165, a decrease of \$23,313 or 4.31 percent from FY 2007 / 2008.
- Land Bank Authority Fund FY 2008 / 2009 is budgeted at \$416,693, a decrease of \$90,304 or 17.81 percent from FY 2007 / 2008.
- One Percent Sales Tax Fund I (1985 - 1993) FY 2008 / 2009 budget totals \$16,151,415, a decrease of \$5,570,116 or 25.64 percent from FY 2007 / 2008.
- One Percent Sales Tax Fund II (1993 - 1998) FY 2008 / 2009 budget totals \$8,322,824, a decrease of \$180,930 or 2.13 percent from 2007 / 2008.
- One Percent Sales Tax Fund III (1998 - 2003) FY 2008 / 2009 budget is \$76,533,997, a decrease of \$784,317 or 1.01 percent from FY 2007 / 2008.

- One Percent Sales Tax Fund IV (2003 - 2008) FY 2008 / 2009 budget is \$111,405,670, an increase of \$865,442 or .78 percent over FY 2007 / 2008.
- One Percent Sales Tax Fund V (2008 - 2015) was created to account for revenues and expenses associated with the continuation of the Special Purpose Local Option Sales Tax approved by the voters. The FY 2008 / 2009 budget totals \$36,568,273.
- General Purpose Capital Improvements Fund Program Budget has an adopted budget for FY 2008 / 2009 of \$4,420,550.
- Capital Improvements Program Budget - 1999 DSA Revenue bonds was created to account for bond proceeds and capital projects expenditures in accordance with the Bond Ordinance. FY 2008 / 2009 has been adopted at \$593,945.
- Capital Improvements Program Budget - 2005 DSA Revenue bonds was created to account for bond proceeds and capital projects expenditures in accordance with the Bond Ordinance. FY 2008 / 2009 has been adopted at \$4,174,378.
- Capital Improvements Program - Detention Center Expansion Fund was created to account for bond proceeds which will be used to expand the County's Detention Facility. FY 2008 / 2009 has been adopted at \$10,000,000.
- Chatham County Hospital Authority Debt Service Fund FY 2008 / 2009 budget totals \$214,018, which is a decrease of \$99,073.
- Water & Sewer Revenue Fund FY 2008 / 2009 budget totals \$2,509,751, an increase of 4.31 percent over FY 2007 / 2008.
- Solid Waste Management Fund FY 2008 / 2009 budget totals \$3,645,963, a decrease of 9.56 percent over FY 2007 / 2008 budget.
- Chatham Area Transit Authority Fund FY 2008 / 2009 budget totals \$17,032,826 an increase of \$3,036,584 or 21.7 percent over FY 2007 / 2008.
- Parking Garage Revenue Fund FY 2008 /2009 budget totals \$325,526, an increase of \$13,661 over 2007 / 2008..
- Henderson Golf Course Fund FY 2008 / 2009 budget totals \$949,600, the same as 2007 / 2008.
- Building Safety & Regulatory Services Fund was created for FY 2005 / 2006 to account for the revenues and expenses associated with zoning, inspections and permitting. The FY 2008 / 2009 FY budget totals \$1,000,000, an increase of \$839,276 over FY 2007 / 2008.
- Catastrophic Claims, within the Internal Service Fund group, FY 2008 / 2009 budget totals \$15,000, the same as FY 2007 / 2008.
- Risk Management, within the Internal Service Fund group, FY 2008 / 2009 budget totals \$3,170,730, an increase of \$573,808 over FY 2007 / 2008.
- Group Health Insurance, within the Internal Service Fund group, FY 2008 / 2009 budget totals \$15,889,728, an increase of \$610,628 or 4 percent over FY 2007 / 2008.

