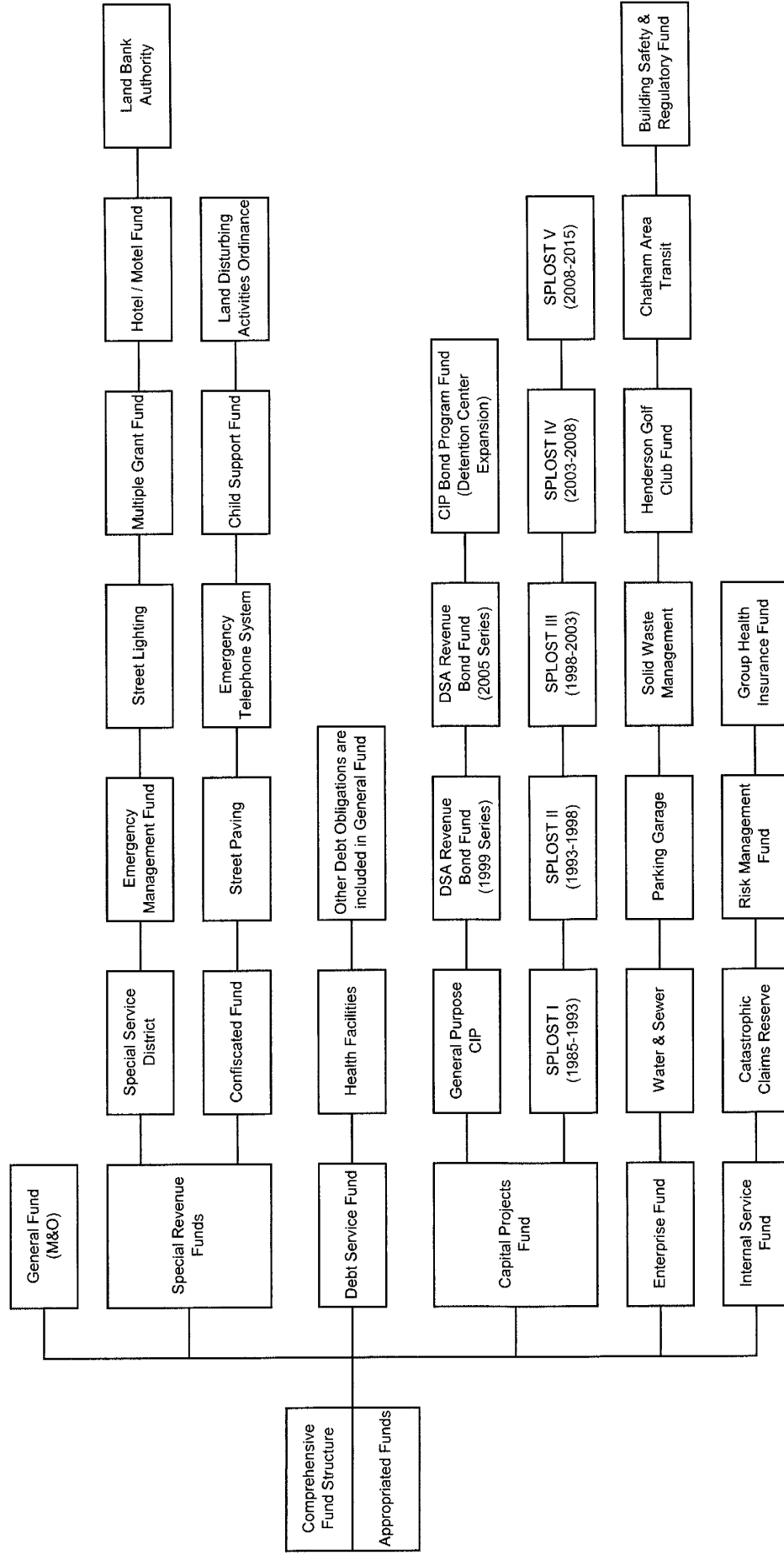


CHATHAM COUNTY, GEORGIA
FISCAL YEAR 2009 / 2010
ALL FUNDS COMBINED BUDGET OVERVIEW

CHATHAM COUNTY BUDGET FUND STRUCTURE FISCAL YEAR 2009 / 2010 BUDGET



CHATHAM COUNTY, GEORGIA

FY 2009 / 2010 ADOPTED BUDGET - ALL FUNDS COMBINED

FUNDS WHICH FINANCE: OPERATIONS	2008 / 2009 Amended	2009 / 2010 Adopted
GENERAL M & O	\$ 154,242,589	\$ 150,778,575
SPECIAL REVENUE FUNDS		
Special Service District	\$ 30,438,140	\$ 27,706,813
Confiscated Fund	\$ 649,178	\$ 50,000
Emergency Management Fund	\$ 1,295,599	\$ 961,309
Street Paving Fund	\$ 296,626	\$ 179,435
Street Lighting Fund	\$ 619,192	\$ 627,420
Emergency Telephone Fund	\$ 2,485,476	\$ 2,499,056
Multiple Grant Fund	\$ 10,903,849	\$ 112,800
Child Support Fund	\$ 3,083,120	\$ 2,883,930
Hotel / Motel Tax Fund	\$ 1,291,320	\$ 1,350,000
Land Disturbing Activities Ord.	\$ 518,165	\$ 403,538
Land Bank Authority	\$ 453,812	\$ 353,812

FUNDS WHICH FINANCE: IMPROVEMENTS & SPECIAL PROJECTS	2008 / 2009 Amended	2009 / 2010 Adopted
1 % Sales Tax Fund (85 - 93)	\$ 20,646,542	\$ 20,000,895
1 % Sales Tax Fund (93 - 98)	\$ 8,201,084	\$ 8,006,103
1 % Sales Tax Fund (98 - 03)	\$ 74,671,240	\$ 71,715,794
1 % Sales Tax Fund (03 - 08)	\$ 105,627,947	\$ 105,627,947
1 % Sales Tax Fund (08 - 15)	\$ 36,568,273	\$ 67,035,308
General Purpose CIP Fund	\$ 26,294,013	\$ 4,974,228
DSA Revenue Bonds - Series 1999	\$ 520,892	\$ 432,611
DSA Revenue Bonds - Series 2005	\$ 4,345,057	\$ 4,132,522
CIP Bond Prog.- Detention Center Expansion	\$ 10,009,924	\$ 44,891,318

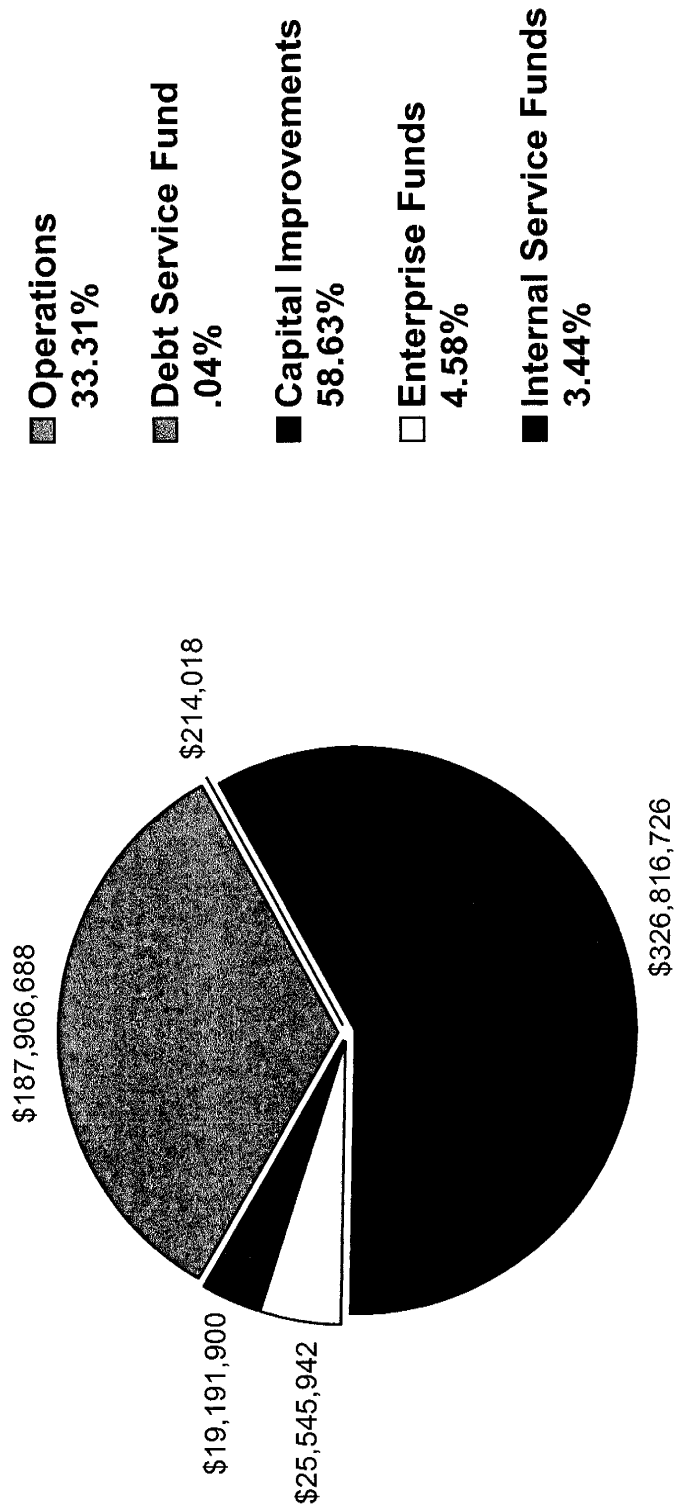
DEBT SERVICE FUNDS	2008 / 2009 Amended	2009 / 2010 Adopted
Chatham County Hospital Authority	\$ 316,914	\$ 214,018

ENTERPRISE FUNDS	2008 / 2009 Amended	2009 / 2010 Adopted
Water & Sewer Revenue Fund	\$ 2,574,930	\$ 2,453,475
Solid Waste Mgmt. Fund	\$ 3,995,873	\$ 4,033,946
C A T Authority Fund	\$ 17,032,826	\$ 17,039,434
Parking Garage Revenue Fund	\$ 325,526	\$ 314,940
Henderson Golf Club Fund	\$ 949,600	\$ 99,600
Building Safety & Reg. Svcs. Fund	\$ 2,112,165	\$ 1,604,547

INTERNAL SERVICE FUNDS	2008 / 2009 Amended	2009 / 2010 Adopted
Catastrophic Claims Reserve Fund	\$ 15,000	\$ 33,900
Risk Management Fund	\$ 3,170,730	\$ 3,220,000
Group Health Insurance Fund	\$ 15,889,728	\$ 15,938,000

TOTAL BUDGET	\$ 539,545,330	\$ 559,675,274
--------------	----------------	----------------

FY 09/10 All Funds Combined



**CHATHAM COUNTY FY 2009 / 2010 ADOPTED BUDGET SUMMARY
FUND COMPARISON (EXPENDITURES / TRANSFERS OUT)**

CATEGORY	FUND	2005 / 2006 Actual	2006 / 2007 Actual	2007 / 2008 Actual	2008 / 2009 Amended	2009 / 2010 Adopted
General M & O		\$ 121,855,538	\$ 130,192,958	\$ 145,948,218	\$ 154,242,589	\$ 150,778,575
Special Revenue Funds	Special Service District	\$ 26,256,323	\$ 24,337,531	\$ 26,194,039	\$ 30,438,140	\$ 27,706,813
	Confiscated Fund	\$ 369,930	\$ 223,376	\$ 328,863	\$ 649,178	\$ 50,000
	Emergency Management Fund	\$ 971,177	\$ 829,746	\$ 957,798	\$ 1,295,599	\$ 961,309
	Street Paving Fund	\$ 420	\$ 2,012	\$ 5,675	\$ 296,626	\$ 179,435
	Street Lighting Fund	\$ 397,278	\$ 434,648	\$ 447,338	\$ 619,192	\$ 627,420
	Emergency Telephone Fund	\$ 1,752,397	\$ 2,915,184	\$ 2,734,446	\$ 2,485,476	\$ 2,499,056
	Multiple Grant Fund	\$ 1,710,890	\$ 904,560	\$ 823,705	\$ 10,903,849	\$ 112,800
	Child Support Fund	\$ 2,703,044	\$ 2,733,956	\$ 2,781,794	\$ 3,083,120	\$ 2,883,930
	Hotel / Motel Tax Fund	\$ 1,337,417	\$ 1,526,912	\$ 1,411,367	\$ 1,291,320	\$ 1,350,000
	Land Disturbing Activities Ord.	\$ 363,645	\$ 445,503	\$ 507,649	\$ 518,165	\$ 403,538
	Land Bank Authority	\$ 276,533	\$ 456,755	\$ 462,364	\$ 453,812	\$ 353,812
		\$ 6,776,705	\$ 214,019	\$ 214,019	\$ 316,914	\$ 214,018
Debt Service Funds:	Chatham County Hospital Authority	\$ 2,444,007	\$ 3,185,741	\$ 9,198,524	\$ 20,646,542	\$ 20,000,895
Capital Projects Funds	Sales Tax I (85-93)	\$ (142,028)	\$ 2,789,732	\$ 680,786	\$ 8,201,084	\$ 8,006,103
	Sales Tax II (93 - 98)	\$ 4,121,988	\$ 7,480,261	\$ 6,595,024	\$ 74,671,240	\$ 71,715,794
	Sales Tax III (98 - 03)	\$ 40,503,496	\$ 48,261,491	\$ 37,057,194	\$ 105,627,947	\$ 105,627,947
	Sales Tax IV (03 - 08)	\$ -	\$ -	\$ -	\$ 36,568,273	\$ 67,035,308
	Sales Tax V (08 - 15)	\$ 2,964,519	\$ 5,433,581	\$ 5,637,191	\$ 26,294,013	\$ 4,974,228
	General Purpose CIP	\$ 1,767,257	\$ 401,289	\$ 193,198	\$ 520,892	\$ 432,611
	DSA Revenue Bonds - Series 1999	\$ 2,543,114	\$ 4,158,413	\$ 3,429,938	\$ 4,345,057	\$ 4,132,522
	DSA Revenue Bonds - Series 2005	\$ -	\$ -	\$ 93,707	\$ 10,009,924	\$ 44,891,318
	Capital Improvement Bond Program (Jail Expansion)	\$ 1,829,211	\$ 1,734,867	\$ 2,332,897	\$ 2,574,930	\$ 2,453,475
Enterprise Funds:	Water & Sewer	\$ 15,820,334	\$ 16,800,605	\$ 17,544,083	\$ 17,032,826	\$ 17,039,434
	CAT Transit Authority	\$ 220,921	\$ 282,492	\$ 277,573	\$ 325,526	\$ 314,940
	Parking Garage	\$ 3,013,304	\$ 2,386,961	\$ 2,741,116	\$ 3,025,442	\$ 4,033,946
	Solid Waste	\$ 907,989	\$ 942,188	\$ 849,451	\$ 949,600	\$ 99,600
	Henderson	\$ 1,463,926	\$ 1,399,667	\$ 1,689,518	\$ 2,112,165	\$ 1,604,547
	Building Safety & Reg.	\$ 214,063	\$ -	\$ -	\$ 15,000	\$ 33,900
	Catastrophic Claims	\$ 3,667,484	\$ 2,758,113	\$ 2,419,251	\$ 3,170,730	\$ 3,220,000
Internal Service Funds:	Risk Management Fund	\$ 15,139,719	\$ 17,695,449	\$ 13,513,502	\$ 15,889,728	\$ 15,938,000
	Health Insurance Fund	\$ 261,250,601	\$ 280,928,009	\$ 287,070,228	\$ 538,574,899	\$ 559,675,274
	Total					

CHATHAM COUNTY, GEORGIA
FY 2009 / 2010 BUDGET
REVENUES, EXPENDITURES, AND OTHER SOURCES/USES SUMMARY

FY 2009 / 2010 Revenues:

Revenues by Type	Total All Funds
Taxes	\$ 223,558,006
Licenses & Permits	2,201,320
Intergovernmental	17,516,438
Charges for Services	29,103,436
Fines & Fees	9,750,904
Interest Income	8,949,781
Miscellaneous	53,786,156
Transfers In	6,658,571
Fund Balance/Reserve/Retained Earnings	208,150,662
TOTAL	\$ 559,675,274

FY 2009 / 2010 Expenditures:

Expenditures by Function	
General Government	\$ 36,307,382
Judiciary	32,442,515
Public Safety	188,026,097
Public Works	138,648,298
Health & Welfare	12,222,213
Culture & Recreation	59,343,881
Housing & Development	2,178,127
Other Government Services	38,816,271
Capital Outlay	20,707,450
Public Transportation	17,039,434
Debt Service	5,707,488
Permits/Zoning/Inspection	1,604,547
Transfers Out	6,631,571
TOTAL	\$ 559,675,274

**FY 2007 / 2008
CONSOLIDATED OPERATION ACTUAL REVENUES**

Sources	General Fund	Special Service District	1% Sales Tax 1985-1993	1% Sales Tax 1993-1998	1% Sales Tax 1998-2003	1% Sales Tax 2003-2008	1% Sales Tax 2008-2015	Other Non-major Governmental Funds	Chatham Area Transit	Solid Waste Fund	Other Non-major Enterprise Funds	Internal Service Funds	Total
Property Taxes	110,866,133	14,855,186				63,699,624		1,411,367					125,521,319
Other Taxes	11,644,135	6,887,468											83,642,594
Comm., Penalties, Etc.	1,343,445	29,317						635,817					1,372,762
Licenses & Permits	970,145	3,327,736						260,099					1,605,962
Fines & Fees	5,933,497	1,502,839						3,599,222					5,090,674
Revenue - Other Government	7,982,606	1,416,329	4,821	200,000				2,679,043		622,970			11,221,009
Charges For Services	2,333,929	295,112											10,979,731
Indirect Cost Allocation	723,064	16,637	40,072		55,350			1,633,711		24,700		14,440,108	16,940,386
Other Revenue	2,037,808	404,097	778,642	310,976	3,692,600	3,157,604		902,813		349,857		264,844	12,064,096
Investment Earnings									15,883,505				1,673,945
Water & Sewer Sales													256,472
Parking Revenues													721,322
Transit Revenues													1,199,999
Golf Course Fees													1,199,999
Construction Permits													1,199,999
Total Revenue	\$ 146,362,498	\$ 25,406,985	\$ 823,535	\$ 378,116	\$ 3,947,950	\$ 66,863,972	\$ 0	\$ 11,122,072	\$ 15,883,505	\$ 997,527	\$ 4,016,593	\$ 14,704,952	\$ 290,507,705
Transfers In	453,443	937,495						10,428,069		2,449,309	458,470	3,468,000	18,657,923
Fund Balance Reserve / Retained Earnings				302,670	2,647,074								
Total Appropriations	\$ 146,815,941	\$ 26,344,480	\$ 680,786	\$ 6,595,024	\$ 6,595,024	\$ 66,863,972	\$ 0	\$ 21,550,141	\$ 15,883,505	\$ 3,446,836	\$ 4,475,063	\$ 18,172,952	\$ 320,027,224

CONSOLIDATED OPERATION ACTUAL EXPENDITURES / EXPENSES

Uses	General Fund	Special Service District	1% Sales Tax 1985-1993	1% Sales Tax 1993-1998	1% Sales Tax 1998-2003	1% Sales Tax 2003-2008	1% Sales Tax 2008-2015	Other Non-major Governmental Funds	Chatham Area Transit	Solid Waste Fund	Other Non-major Enterprise Funds	Internal Service Funds	Total
General Government	30,102,487	3,179,976						46,617					33,329,080
Judiciary	24,630,274	1,156,519						350,312					26,137,105
Public Safety	47,432,741	12,357,209						6,918,338					66,708,288
Public Works	1,471,578	5,081,865						459,913					7,013,356
Health & Welfare	10,185,649												10,185,649
Culture & Recreation	10,158,944												10,158,944
Housing & Development	549,776	1,729,951						1,675,696					3,955,423
Insurance & Bonds													0
Other Gov. Svcs.													21,961,626
Capital Outlay			9,198,524	680,786	6,595,024	37,057,194		9,296,499		2,741,115	3,287,758	15,932,753	62,828,027
Public Transportation									17,544,083				17,544,083
Depreciation													0
Debt Service	5,558,333	62,116						184,854					5,805,303
Permits / Zoning / Inspection													1,663,219
Total Expenditures / Expenses	\$ 130,089,782	\$ 23,567,636	\$ 9,198,524	\$ 680,786	\$ 6,595,024	\$ 37,057,194	\$ 0	\$ 18,932,229	\$ 17,544,083	\$ 2,741,115	\$ 4,950,977	\$ 15,932,753	\$ 267,290,103
Transfers Out	15,858,436	2,626,403						1,041,621			27,000		18,657,923
Total Appropriations	\$ 145,948,218	\$ 26,194,039	\$ 9,198,524	\$ 680,786	\$ 6,595,024	\$ 37,057,194	\$ 0	\$ 19,973,850	\$ 17,544,083	\$ 2,741,115	\$ 4,977,977	\$ 15,932,753	\$ 286,843,563

CHATHAM COUNTY, GEORGIA
FY 2008 / 2009 AMENDED BUDGET
CONSOLIDATED OPERATION BUDGET REVENUES

Sources	General Fund	Special Service District	1% Sales Tax 1985-1993	1% Sales Tax 1993-1998	1% Sales Tax 1998-2003	1% Sales Tax 2003-2008	1% Sales Tax 2008-2015	Other Non-major Governmental Funds	Chatham Area Transit	Solid Waste Fund	Other Non-major Enterprise Funds	Internal Service Funds	Total
Property Taxes	117,138,366	15,290,463					36,568,273						132,428,829
Other Taxes	11,000,000	5,617,500				131,629		1,291,320					54,608,722
Comm., Penalties, Etc.	1,307,900												1,307,900
Licenses & Permits	910,040	1,286,000						2,536,458					2,196,040
Fines & Fees	3,286,190	1,834,500						13,916,969					7,657,148
Revenue - Other Government	5,477,729	1,253,028	7,300,000										27,947,726
Charges For Services	7,551,674	342,751								500,000			8,394,425
Indirect Cost Allocation	2,613,880							670,902		60,000		16,044,728	2,613,880
Other Revenue	471,029	5,000				-24,977		108,130		370,000			9,239,419
Investment Earnings	360,743	350,000				8,050,546					2,267,880		2,267,880
Water & Sewer Sales											294,930		294,930
Parking Revenues									17,032,826				17,032,826
Transit Revenues													949,600
Golf Course Fees													1,000,000
Construction Permits													1,000,000
Total Revenue	\$ 150,117,551	\$ 25,979,242	\$ 7,300,000	\$ 0	\$ 0	\$ 8,157,198	\$ 36,568,273	\$ 18,523,779	\$ 17,032,826	\$ 930,000	\$ 4,512,410	\$ 16,044,728	\$ 285,166,007
Transfers In	1,235,545	672,660						13,001,950		2,715,963	1,112,165	2,835,510	21,573,793
Fund Balance Reserve / Retained Earnings	2,889,493	3,786,238	13,346,542	8,201,084	74,671,240	97,470,749		31,557,408		349,910	337,646	195,220	232,805,530
Total Appropriations	\$ 154,242,589	\$ 30,438,140	\$ 20,646,542	\$ 8,201,084	\$ 74,671,240	\$ 105,627,947	\$ 36,568,273	\$ 63,083,137	\$ 17,032,826	\$ 3,995,873	\$ 5,962,221	\$ 19,075,458	\$ 539,545,330

CONSOLIDATED OPERATION BUDGET EXPENDITURES / EXPENSES

Uses	General Fund	Special Service District	1% Sales Tax 1985-1993	1% Sales Tax 1993-1998	1% Sales Tax 1998-2003	1% Sales Tax 2003-2008	1% Sales Tax 2008-2015	Other Non-major Governmental Funds	Chatham Area Transit	Solid Waste Fund	Other Non-major Enterprise Funds	Internal Service Funds	Total
General Government	28,441,299	1,685,153						15,774,012					45,900,464
Judiciary	27,519,861	1,905,885						3,929,252					33,354,998
Public Safety	51,256,480	13,594,218						19,299,185					84,149,893
Public Works	1,469,829	5,923,984						6,250,493		3,387,808			17,032,114
Health & Welfare	11,247,708							1,342,534					12,590,242
Culture & Recreation	11,747,102							4,568,388					16,315,490
Housing & Development	533,579	2,053,047						2,010			2,112,165		4,700,801
Insurance & Bonds													0
Other Gov. Svcs.	9,760,795	1,035,385	20,646,542	8,201,084	74,671,240	105,627,947	36,568,273	11,704,813		344,700	3,800,570	19,075,458	45,377,021
Capital Outlay													246,109,272
Public Transportation									17,032,826		49,486		17,032,826
Depreciation													263,365
Debt Service													6,746,946
Permits / Zoning / Inspection		87,120						187,450					0
Total Expenditures / Expenses	\$ 148,449,039	\$ 26,284,792	\$ 20,646,542	\$ 8,201,084	\$ 74,671,240	\$ 105,627,947	\$ 36,568,273	\$ 63,083,137	\$ 17,032,826	\$ 3,995,873	\$ 5,962,221	\$ 19,075,458	\$ 529,573,432
Transfers Out	5,793,550	4,153,348						25,000					9,971,898
Total Appropriations	\$ 154,242,589	\$ 30,438,140	\$ 20,646,542	\$ 8,201,084	\$ 74,671,240	\$ 105,627,947	\$ 36,568,273	\$ 63,083,137	\$ 17,032,826	\$ 3,995,873	\$ 5,962,221	\$ 19,075,458	\$ 539,545,330

**FY 2009 / 2010 BUDGET
CONSOLIDATED OPERATION BUDGET REVENUES**

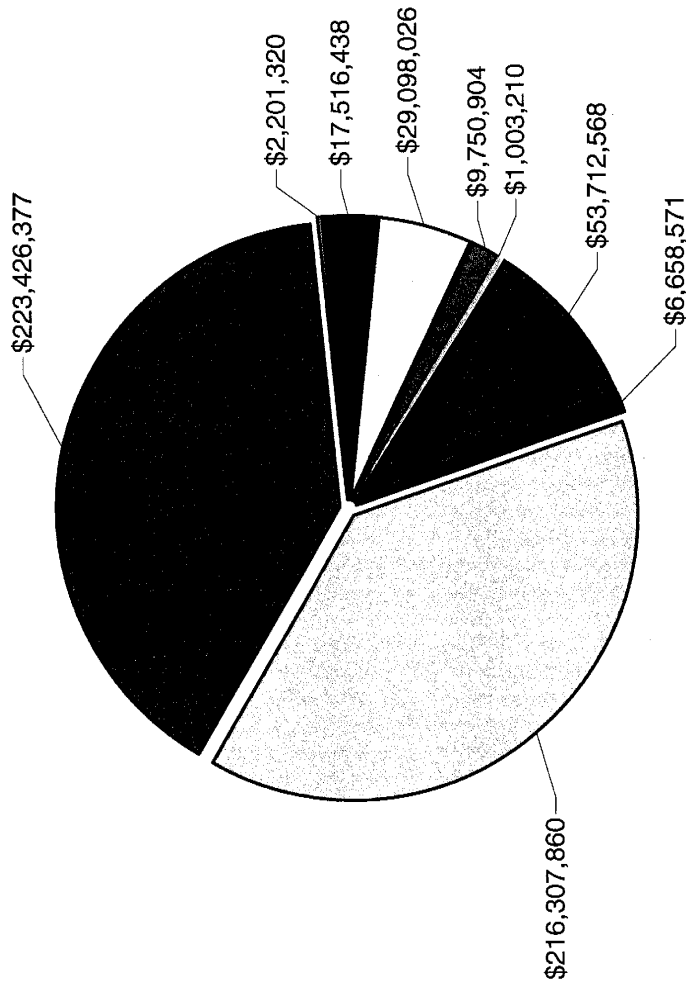
Sources	General Fund	Special Service District	1% Sales Tax 1985-1993	1% Sales Tax 1993-1998	1% Sales Tax 1998-2003	1% Sales Tax 2003-2008	1% Sales Tax 2008-2015	Other Non-major Governmental Funds	Chatham Area Transit	Solid Waste Fund	Other Non-major Enterprise Funds	Internal Service Funds	Total
Property Taxes	120,969,832	18,030,917					67,035,308	1,350,000					199,000,749
Other Taxes	10,900,000	3,540,000											82,825,308
Comm., Penalties, Etc.	1,600,320												1,600,320
Licenses & Permits	961,320	1,240,000											2,201,320
Fines & Fees	3,032,845	1,533,800								2,557,003			9,750,904
Revenue - Other Government	2,237,171	747,200	9,231,455										15,142,556
Charges For Services	7,620,667	131,900											8,379,987
Indirect Cost Allocation	2,373,882												2,373,882
Other Revenue	386,738	5,000						36,567,830		60,000		16,893,000	53,712,568
Investment Earnings	365,000	200,000						89,000		186,000		98,900	1,003,210
Water & Sewer Sales													2,394,575
Parking Revenues													309,530
Transit Revenues									17,039,434				17,039,434
Golf Course Fees													48,000
Construction Permits													926,500
Total Revenue	\$ 150,447,775	\$ 25,428,817	\$ 9,231,455	\$ 8,006,103	\$ 71,715,794	\$ 105,627,947	\$ 67,035,308	\$ 44,188,236	\$ 17,039,434	\$ 2,803,003	\$ 3,742,915	\$ 16,791,900	\$ 336,708,843
Transfers In	330,800	702,000						1,316,781					2,400,000
Fund Balance Reserve / Retained Earnings		1,575,996	10,769,440	8,006,103	71,715,794	105,627,947		18,560,980			51,600		216,307,860
Total Appropriations	\$ 150,778,575	\$ 27,706,813	\$ 20,000,895	\$ 8,006,103	\$ 71,715,794	\$ 105,627,947	\$ 67,035,308	\$ 64,065,997	\$ 17,039,434	\$ 4,033,946	\$ 4,472,562	\$ 19,191,900	\$ 559,675,274

CONSOLIDATED OPERATION BUDGET EXPENDITURES / EXPENSES

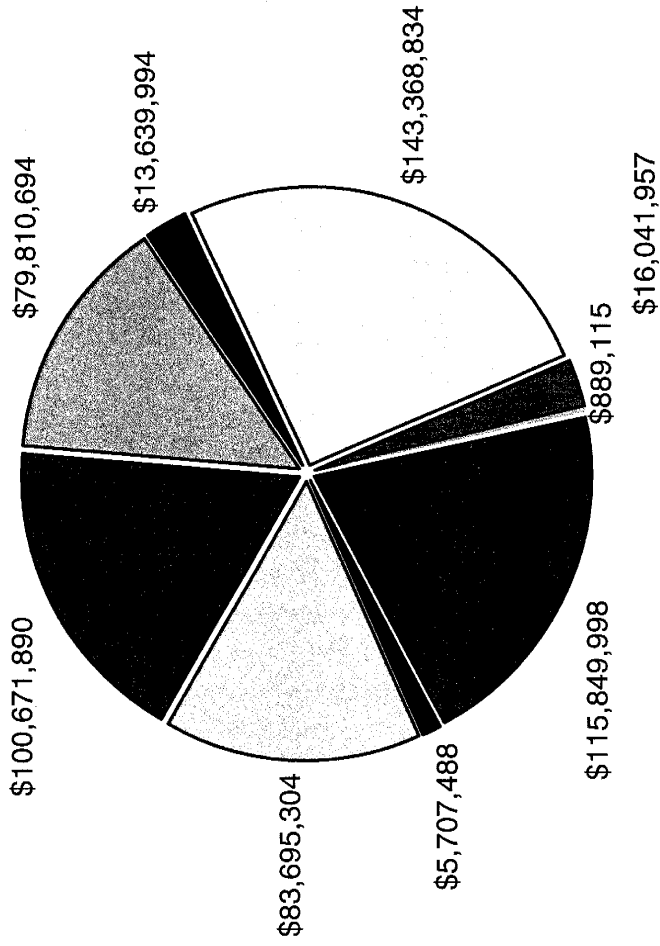
Uses	General Fund	Special Service District	1% Sales Tax 1985-1993	1% Sales Tax 1993-1998	1% Sales Tax 1998-2003	1% Sales Tax 2003-2008	1% Sales Tax 2008-2015	Other Non-major Governmental Funds	Chatham Area Transit	Solid Waste Fund	Other Non-major Enterprise Funds	Internal Service Funds	Total
General Government	27,760,514	1,528,077						4,765,331					34,053,922
Judiciary	27,347,511	2,060,873						3,153,580					32,561,964
Public Safety	51,599,732	14,008,641				5,419,788	67,035,308	49,843,179					187,906,648
Public Works	1,465,962	5,460,214	6,717,662		69,378,119	54,419,486		1,206,855					138,648,298
Health & Welfare	11,148,981							1,073,232					12,222,213
Culture & Recreation	11,166,076							1,209,605					59,343,881
Housing & Development	579,433	1,598,694	297,639		1,940,539	44,630,422					99,600		2,178,127
Insurance & Bonds													0
Other Gov. Svcs.	9,713,835	1,556,804	20,000,895	990,802	397,136	1,158,251		1,925,197		3,064,026	2,698,415	19,191,900	40,696,366
Capital Outlay										706,555			20,707,450
Public Transportation									17,039,434				17,039,434
Depreciation													333,365
Debt Service	5,558,470												5,747,488
Permits / Zoning / Inspection													1,604,547
Total Expenditures / Expenses	\$ 146,340,514	\$ 26,213,303	\$ 20,000,895	\$ 8,006,103	\$ 71,715,794	\$ 105,627,947	\$ 67,035,308	\$ 63,365,997	\$ 17,039,434	\$ 4,033,946	\$ 4,472,562	\$ 19,191,900	\$ 553,043,703
Transfers Out	4,438,061	1,493,510						700,000					6,631,571
Total Appropriations	\$ 150,778,575	\$ 27,706,813	\$ 20,000,895	\$ 8,006,103	\$ 71,715,794	\$ 105,627,947	\$ 67,035,308	\$ 64,065,997	\$ 17,039,434	\$ 4,033,946	\$ 4,472,562	\$ 19,191,900	\$ 559,675,274

FY 09/10 All Funds Combined by Revenue Category

- Tax Revenues 39.7%
- ▨ License & Permit Revenues .39%
- Inter Governmental Revenues 3.16%
- Charges For Services 5.22%
- Fines & Forfeitures Revenue 1.75%
- ▨ Interest Revenue .18%
- Miscellaneous Revenue 9.64%
- Other Funding Source Revenues 1.19%
- Fund Balance 38.79%



FY 09/10 ALL Funds Combined by Expenditure Type



- Personal Services
18.06%
- Purchased/Contracted Svcs.
14.32%
- Supplies Expenditures
2.45%
- Capital Outlay
25.72%
- Interfund/Dept. Svcs.
2.88%
- Depreciation
.16%
- Other Costs
20.78%
- Debt Service
1.02%
- Other Financing Uses
14.62%

CHATHAM COUNTY, GEORGIA FY 2009 / 2010 BUDGET

EXPENDITURES - ALL FUNDS

- Chatham County FY 2009 / 2010 budget for all funds totals \$559,675,274, an increase of \$20,129,944 or 3.73 percent over FY 2008 / 2009.
- General Fund (M&O) FY 2009 / 2010 budget totals \$150,778,575, a decrease of \$3,464,014 or 2.25 percent from FY 2008 / 2009 budget.
- Special Service District Fund FY 2009 / 2010 budget totals \$27,706,813 a decrease of \$2,731,327 or 8.97 percent from FY 2008 / 2009 budget.
- Confiscated Fund FY 2009 / 2010 budget totals \$50,000, a decrease of 92.30 percent from FY 2008 / 2009 budget.
- Chatham Emergency Management Fund FY 2009 / 2010 budget totals \$961,309 which is a decrease of \$334,290 or 25.80 percent from FY 2008 / 2009.
- Street Lighting Fund FY 2009 / 2010 budget totals \$627,420 an increase of 1.33 percent over FY2008 / 2009.
- Street Paving Fund FY 2009 / 2010 budget totals \$179,435 a decrease of 39.51 percent from FY 2008 / 2009.
- Emergency Telephone System Fund FY 2009 / 2010 budget totals \$2,499,056, an increase of .55 percent over FY 2008 / 2009.
- Multiple Grants Special Revenue Fund FY 2009 / 2010 budget totals \$112,800, a decrease of 98.97 percent from FY 2008 / 2009.
- Child Support Recovery Fund adopted budget for FY 2009 / 2010 is \$2,883,930 a decrease of \$199,190 or 6.46 percent from FY 2008 / 2008.
- Hotel / Motel Special Revenue Tax Fund FY 2009 / 2010 totals \$1,350,000 an increase of 4.54 percent over FY 2008 / 2009.
- Land Disturbing Activities Ordinance Fund FY 2009 / 2010 budget totals \$403,538, a decrease of \$114,627 or 22.12 percent from FY 2008 / 2009.
- Land Bank Authority Fund FY 2009 / 2010 is budgeted at \$353,812, a decrease of \$100,000 or 22.04 percent from FY 2008 / 2009.
- One Percent Sales Tax Fund I (1985 - 1993) FY 2009 / 2010 budget totals \$20,000,895, a decrease of \$645,647 or 3.13 percent from FY 2008 / 2009.
- One Percent Sales Tax Fund II (1993 - 1998) FY 2009 / 2010 budget totals \$8,006,103, a decrease of \$194,981 or 2.38 percent from 2008 / 2009.
- One Percent Sales Tax Fund III (1998 - 2003) FY 2009 / 2010 budget is \$71,715,794, a decrease of \$2,955,446 or 3.96 percent from FY 2008 / 2009.
- One Percent Sales Tax Fund IV (2003 - 2008) FY 2009 / 2010 budget is \$105,627,947, the same as FY 2008 / 2009.

- One Percent Sales Tax Fund V (2008 - 2015) FT 2009 / 2010 budget is \$67,035,308 an increase of \$30,467,035 or 83.32 percent over FY 2008 / 2009.
- General Purpose Capital Improvements Fund Program Budget has an adopted budget for FY 2009 / 2010 of \$4,974,228.
- Capital Improvements Program Budget - 1999 DSA Revenue bonds was created to account for bond proceeds and capital projects expenditures in accordance with the Bond Ordinance. FY 2009 / 2010 budget has been adopted at \$432,611.
- Capital Improvements Program Budget - 2005 DSA Revenue bonds was created to account for bond proceeds and capital projects expenditures in accordance with the Bond Ordinance. FY 2009 / 2010 budget has been adopted at \$4,132,522.
- Capital Improvements Program - Detention Center Expansion Fund was created to account for expansion of the County's Detention Facility. FY 2009 / 2010 has been adopted at \$44,891,381 an increase of \$34,881,394 or 348.47 percent over FY 2008 / 2009.
- Chatham County Hospital Authority Debt Service Fund FY 2009 / 2010 budget totals \$214,018, which is a decrease of \$102,896 or 32.47 percent over FY 2008 / 2009 .
- Water & Sewer Revenue Fund FY 2009 / 2010 budget totals \$2,453,475, a decrease of 4.72 percent from FY 2008 / 2009.
- Solid Waste Management Fund FY 2009 / 2010 budget totals \$4,033,946, an increase of .95 percent over FY 2008 / 2009 budget.
- Chatham Area Transit Authority Fund FY 2009 / 2010 budget totals \$17,039,434 an increase of \$6,608 or .04 percent over FY 2008 / 2009.
- Parking Garage Revenue Fund FY 2009 / 2010 budget totals \$314,940, a decrease of \$10,586 from FY 2008 / 2009..
- Henderson Golf Course Fund FY 2009 / 2010 budget totals \$99,600 a decrease of \$850,000 or 89.51 percent from FY 2008 / 2009.
- Building Safety & Regulatory Services Fund was created for FY 2005 / 2006 to account for the revenues and expenses associated with zoning, inspections and permitting. The FY 2009 / 2010 FY budget totals \$1,604,547, a decrease of \$507,618 from FY 2008 / 2009 .
- Catastrophic Claims, within the Internal Service Fund group, FY 2009 / 2010 budget totals \$33,900, an increase of 126.6 percent over FY 2008 / 2009.
- Risk Management, within the Internal Service Fund group, FY 2009 / 2010 budget totals \$3,220,000, an increase of \$49,270 over FY 2008 / 2009.
- Group Health Insurance, within the Internal Service Fund group, FY 2009 / 2010 budget totals \$15,938,000, an increase of \$48,272 or .30 percent over FY 2008 / 2009.

