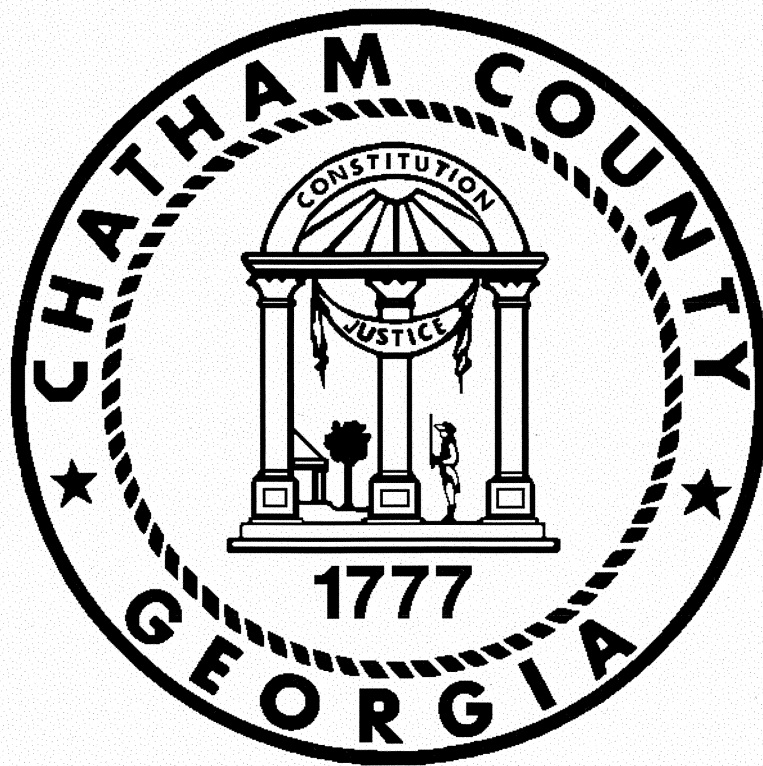


COMMENT RELATIVE TO STATISTICAL SECTION

Statistical tables differ from financial statements because they usually cover more than one fiscal year and may present non-accounting data. These reflect social and economic data, financial trends, and the fiscal capacity of the government. The tables are un-audited due to the nature of the information contained therein.



STATISTICAL SECTION

This part of the Chatham County's comprehensive annual financial report presents detailed information as a context for understanding what the information in the financial statements, note disclosures, and required supplementary information says about the government's overall financial health.

Contents	Page
Financial Trends	G-3
<i>These schedules contain trend information to help the reader understand how the government's financial performance and well-being have changed over time.</i>	
Revenue Capacity	G-11
<i>These schedules contain information to help the reader assess the government's most significant local revenue source, the property tax.</i>	
Debt Capacity	G-20
<i>These schedules present information to help the reader assess the affordability of the government's current levels of outstanding debt and the government's ability to issue additional debt in the future.</i>	
Demographic and Economic Information	G-24
<i>These schedules offer demographic and economic indicators to help the reader understand the environment within which the government's financial activities take place.</i>	
Operating Information	G-26
<i>These schedules contain service and infrastructure data to help the reader understand how the information in the government's financial report relates to the services the government provides and the activities it performs.</i>	

Chatham County, Georgia
Net Assets by Component
(accrual basis of accounting)
Last Six Fiscal Years

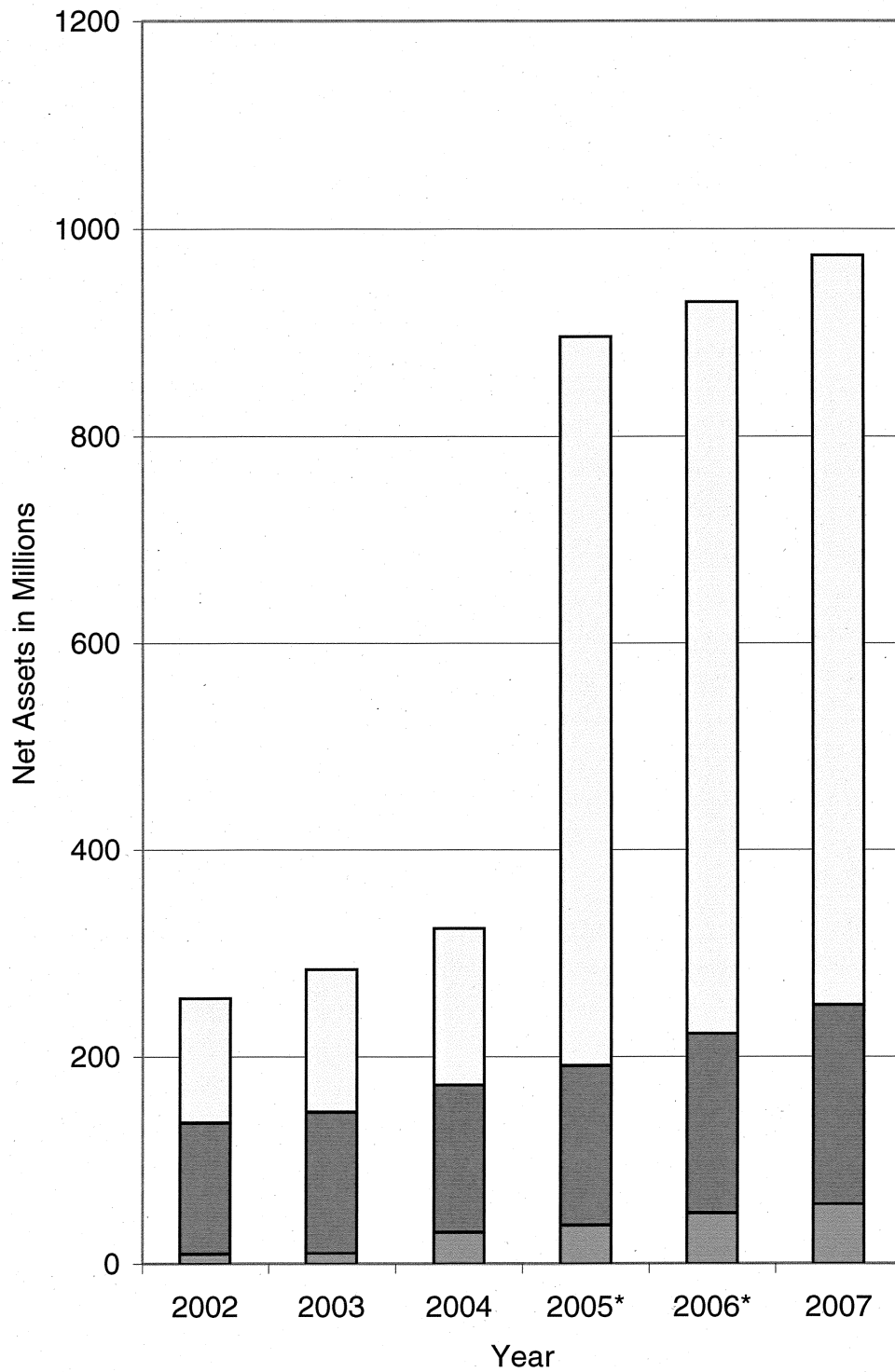
	Fiscal Year					
	2002	2003	2004	2005	2006	2007
Governmental activities						
Invested in capital assets, net of related debt	\$ 106,561,598	\$ 117,363,408	\$ 125,672,124	\$ 680,133,250 ¹	\$ 678,740,933 ²	\$ 696,028,733
Restricted	123,889,739	132,923,076	138,919,670	150,477,644	169,451,499	189,088,649
Unrestricted	(1,198,395)	3,372,561	21,164,204	28,104,633	42,827,583	50,055,974
Total governmental activities net assets	<u>\$ 229,252,942</u>	<u>\$ 253,659,045</u>	<u>\$ 285,755,998</u>	<u>\$ 858,715,527</u>	<u>\$ 891,020,015</u>	<u>\$ 935,173,356</u>
Business-type activities						
Invested in capital assets, net of related debt	\$ 13,619,102	\$ 20,597,344	\$ 26,080,588	\$ 24,881,272	\$ 28,911,730	\$ 28,956,177
Restricted	2,745,651	3,261,440	3,197,699	3,726,855	3,807,712	3,234,176
Unrestricted	10,589,556	6,736,743	8,920,966	9,064,831	5,838,624	7,318,244
Total business-type activities net assets	<u>\$ 26,954,309</u>	<u>\$ 30,595,527</u>	<u>\$ 38,199,253</u>	<u>\$ 37,672,958</u>	<u>\$ 38,558,066</u>	<u>\$ 39,508,597</u>
Primary government						
Invested in capital assets, net of related debt	\$ 120,180,700	\$ 137,960,752	\$ 151,752,712	\$ 705,014,522 ¹	\$ 707,652,663 ²	\$ 724,984,910
Restricted	126,635,390	136,184,516	142,117,369	154,204,499	173,259,211	192,322,825
Unrestricted	9,391,161	10,109,304	30,085,170	37,169,464	48,666,207	57,374,218
Total primary government net assets	<u>\$ 256,207,251</u>	<u>\$ 284,254,572</u>	<u>\$ 323,955,251</u>	<u>\$ 896,388,485</u>	<u>\$ 929,578,081</u>	<u>\$ 974,681,953</u>

¹ Increase in capital assets due to implementation of GASB 34 Infrastructure requirement in 2006 retro to 2005.

² Increase in capital assets due to implementation of GASB 34 Infrastructure requirement in 2006.

Note: 10 years information not available. GASB 34 implementation year was 2002

Chatham County, Georgia
Total Government Net Assets



□ Invested in Capital Assets, Net of Related Debt
■ Restricted Assets
■ Unrestricted Assets

*GASB 34 infrastructure reporting occurred in 2006, retroactive to 2005.

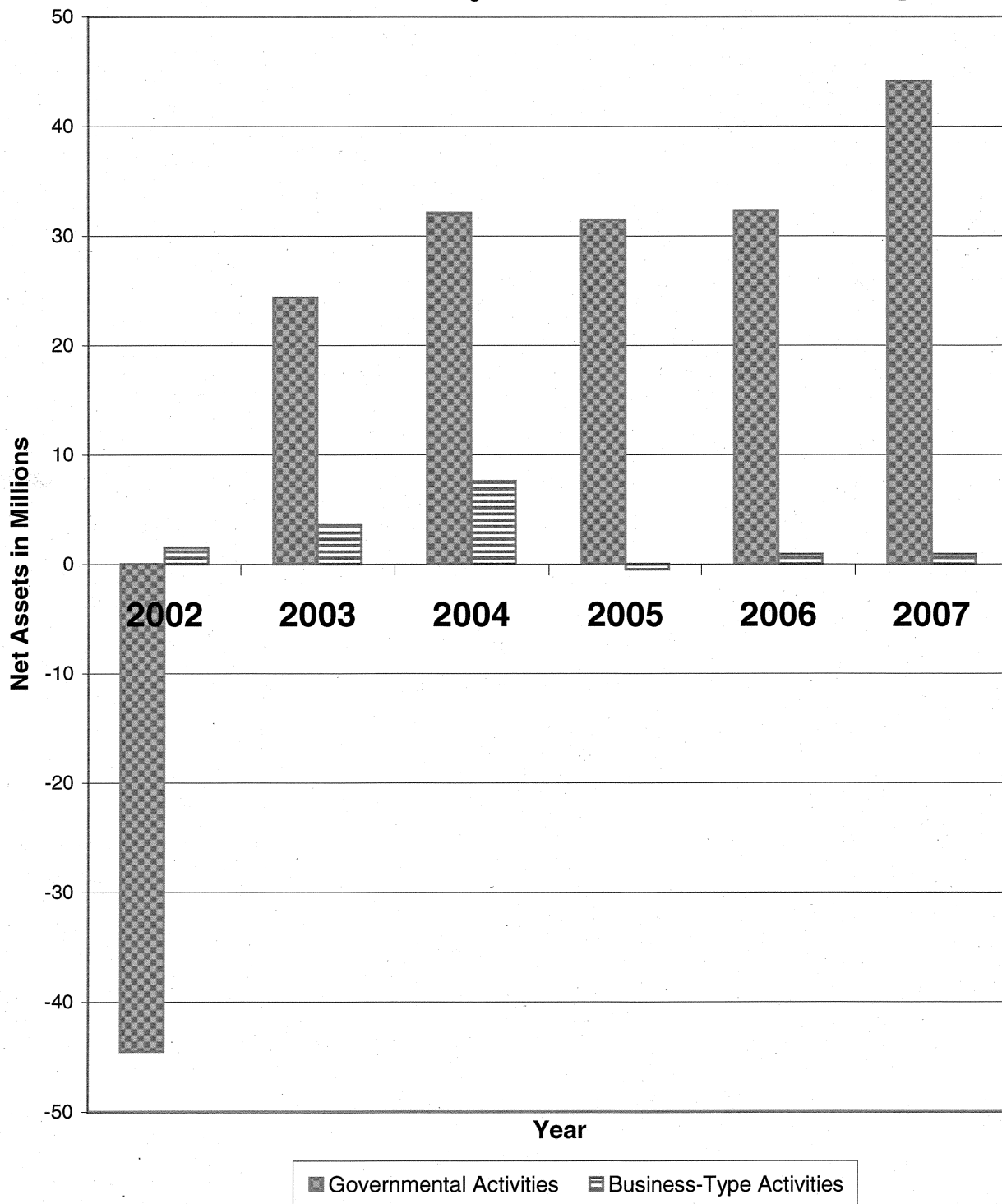
Chatham County, Georgia
Change in Net Assets
Last Six Fiscal Years

	Fiscal Year					
	2002	2003	2004	2005	2006	2007
Expenses						
Governmental activities:						
General government	\$ 24,241,377	\$ 21,717,462	\$ 22,981,430	\$ 24,443,974	\$ 26,628,117	\$ 31,378,123
Judiciary	18,714,343	16,826,962	18,406,097	20,283,800	22,706,196	24,177,726
Public safety	43,446,492	45,866,679	47,664,676	49,643,795	58,527,308	63,510,567
Public works	39,238,618	33,451,315	27,935,642	25,338,583	47,283,087	59,577,210
Health & Welfare	9,685,308	9,991,188	9,567,838	10,035,031	12,715,744	9,510,033
Culture and Recreation	10,891,326	9,163,624	9,416,115	21,808,482	13,069,470	14,430,717
Housing and development	1,037,142	1,199,049	1,412,605	1,758,770	2,888,091	3,893,952
Interest on long-term debt	3,325,735	3,044,736	2,891,924	2,915,656	2,391,033	1,853,056
Total governmental activities expenses	150,580,341	141,261,015	140,276,327	156,228,091	186,209,046	208,331,384
Business-type activities:						
Environmental Services-Solid Waste	2,127,838	2,128,014	1,986,172	2,090,871	3,013,304	2,386,961
Transportation Services-Bus	11,341,419	13,006,053	13,737,575	14,601,618	15,820,334	16,800,605
Recreation Services-Golf	1,221,338	1,127,090	1,151,150	946,652	859,989	944,428
Other Services-Water & Sewer	1,444,691	1,422,000	1,495,201	1,691,215	1,829,210	1,734,867
Other Services-Parking	190,343	213,543	220,047	215,646	220,922	282,492
Other Services-Building Safety&Reg Serv				1,176,247	1,460,642	1,372,667
Total business-type activities expenses	16,325,629	17,896,700	18,590,145	20,722,249	23,204,401	23,522,020
Total primary government expenses	\$ 166,905,970	\$ 159,157,715	\$ 158,866,472	\$ 176,950,340	\$ 209,413,447	\$ 231,853,404
Program Revenues						
Governmental activities:						
Charges for services:						
General Government	\$ 2,920,144	\$ 4,075,520	\$ 3,308,622	\$ 4,214,628	\$ 6,149,689	\$ 7,144,308
Judiciary	6,159,214	6,404,289	6,807,645	6,725,542	6,449,303	6,876,140
Public Safety	3,107,430	4,082,159	4,760,820	4,006,887	4,424,964	4,520,152
All Other Services	973,128	1,290,375	1,287,857	1,412,357	1,486,074	1,219,505
Operating grants and contributions	6,089,107	5,510,024	5,514,146	5,317,329	4,930,727	4,655,009
Capital grants and contributions	4,518,793	1,955,575	1,403,663	1,062,332	1,233,710	11,483,299
Total governmental activities program revenues	23,767,816	23,317,942	23,082,753	22,739,075	24,674,467	35,898,413
Business-type activities:						
Charges for services:						
Transportation - Bus System	3,147,530	2,775,299	3,443,935	3,702,773	4,134,209	4,272,812
Water & Sewer	1,579,698	1,620,619	1,656,729	1,685,041	1,658,568	1,922,083
All Other Services	1,498,334	1,417,532	1,577,808	2,493,538	3,314,076	2,651,658
Operating grants and contributions	3,212,034	6,618,979	5,838,090	4,498,703	1,410,159	3,135,668
Capital grants and contributions			-	-	4,015,642	1,396,623
Total business-type activities program revenues	9,437,596	12,432,429	12,516,562	12,380,055	14,532,654	13,378,844
Total primary government program revenues	\$ 33,205,412	\$ 35,750,371	\$ 35,599,315	\$ 35,119,130	\$ 39,207,121	\$ 49,277,257
Net (expense)/revenue						
Governmental activities	\$ (126,812,525)	\$ (117,943,073)	\$ (117,193,574)	\$ (133,489,016)	\$ (161,534,579)	\$ (172,432,971)
Business-type activities	(6,888,033)	(5,464,271)	(6,073,583)	(8,342,194)	(8,671,747)	(10,143,176)
Total primary government net (expense)	\$ (133,700,558)	\$ (123,407,344)	\$ (123,267,157)	\$ (141,831,210)	\$ (170,206,326)	\$ (182,576,147)
General Revenues and Other Changes in Net Assets						
Governmental activities:						
Taxes						
Property taxes	\$ 80,245,189	\$ 83,128,587	\$ 86,238,752	\$ 90,592,873	\$ 104,165,430	\$ 117,172,970
Sales taxes	8,568,769	8,909,793	8,750,846	9,249,775	10,757,985	11,131,700
Special purpose local option sales taxes	44,071,115	45,192,025	51,669,376	52,400,168	60,501,173	63,129,402
Other taxes	5,056,933	6,476,720	7,520,307	8,203,505	7,551,652	8,837,226
Contributions not restricted for specific prog					3,931,963	3,996,029
Unrestricted investment earnings	5,041,284	3,312,015	1,688,363	5,107,224	7,520,599	11,683,260
Miscellaneous	3,881,239	4,249,485	2,054,532	2,331,875	2,691,205	4,601,500
Special Items-Loss on Sale of Assets	(56,486,564)	-	-	-	-	-
Transfers	(8,088,516)	(8,919,449)	(8,631,649)	(2,894,520)	(3,280,940)	(3,965,774)
Total governmental activities	82,289,449	142,349,176	149,290,527	164,990,900	193,839,067	216,586,313
Business-type activities:						
Taxes	-	-	4,829,542	5,113,079	5,608,939	6,410,747
Contributions not restricted for specific prog	-	-	-	300,943	-	-
Unrestricted investment earnings	241,680	125,611	103,419	274,369	648,245	712,810
Miscellaneous	4,275	60,429	112,699	(767,012)	18,731	4,375
Transfers	8,088,516	8,919,449	8,631,649	2,894,520	3,280,940	3,965,774
Total business-type activities	8,334,471	9,105,489	13,677,309	7,815,899	9,556,855	11,093,706
Total primary government	\$ 90,623,920	\$ 151,454,665	\$ 162,967,836	\$ 172,806,799	\$ 203,395,922	\$ 227,680,019
Change in Net Assets						
Governmental activities	\$ (44,523,076)	\$ 24,406,103	\$ 32,096,953	\$ 31,501,884	\$ 32,304,488	\$ 44,153,342
Business-type activities	1,446,438	3,641,218	7,603,726	(526,295)	885,108	950,530
Total primary government	\$ (43,076,638)	\$ 28,047,321	\$ 39,700,679	\$ 30,975,589	\$ 33,189,596	\$ 45,103,872

Note: 10 years information not available. GASB 34 implementation year was 2002

Chatham County, Georgia

Change in Net Assets



Chatham County, Georgia
Fund Balances of Governmental Funds
Last Ten Fiscal Years
(modified accrual basis of accounting)

	Fiscal Year				
	1998	1999	2000	2001	2002
General Fund					
Reserved	\$ 2,213,499	\$ 1,867,798	\$ 2,850,882	\$ 2,288,618	\$ 2,440,507
Unreserved	3,379,749	6,215,322	(2,742,482)	(3,968,001)	2,214,452
Total General Fund	<u>\$ 5,593,248</u>	<u>\$ 8,083,120</u>	<u>\$ 108,400</u>	<u>\$ (1,679,383)</u>	<u>\$ 4,654,959</u>
Special Service District					
Reserved	\$ 1,768,430	\$ 1,138,099	\$ 758,054	\$ 786,824	\$ 761,126
Unreserved	2,391,192	1,609,367	1,270,362	1,225,777	3,581,105
Total Special Service District	<u>\$ 4,159,622</u>	<u>\$ 2,747,466</u>	<u>\$ 2,028,416</u>	<u>\$ 2,012,601</u>	<u>\$ 4,342,231</u>
All other governmental funds					
Reserved	\$ 3,658,660	\$ 4,028,972	\$ 4,639,678	\$ 4,415,619	\$ 4,639,183
Unreserved, reported in					
Special Revenue funds	545,287	587,815	1,143,725	895,802	973,328
Capital Projects funds	157,799,559	152,456,192	134,208,038	108,306,893	111,273,867
Total all other governmental funds	<u>\$ 162,003,506</u>	<u>\$ 157,072,979</u>	<u>\$ 139,991,441</u>	<u>\$ 113,618,314</u>	<u>\$ 116,886,378</u>

Fiscal Year				
2003	2004	2005	2006	2007
\$ 1,962,010	\$ 1,992,564	\$ 3,760,341	\$ 2,202,127	\$ 2,814,403
2,742,413	8,134,025	10,183,297	14,500,833	20,173,244
<u>\$ 4,704,423</u>	<u>\$ 10,126,589</u>	<u>\$ 13,943,638</u>	<u>\$ 16,702,960</u>	<u>\$ 22,987,647</u>
\$ 111,559	\$ 1,138,333	\$ 679,750	\$ 215,801	\$ 534,767
6,163,612	8,791,426	11,157,347	8,588,678	10,044,579
<u>\$ 6,275,171</u>	<u>\$ 9,929,759</u>	<u>\$ 11,837,097</u>	<u>\$ 8,804,479</u>	<u>\$ 10,579,346</u>
\$ 1,009,876	\$ 1,226,310	\$ 1,055,617	\$ 1,193,937	\$ 1,130,387
894,761	959,944	1,153,918	590,083	573,016
125,680,255	138,497,038	141,194,181	190,836,999	205,491,350
<u>\$ 127,584,892</u>	<u>\$ 140,683,292</u>	<u>\$ 143,403,716</u>	<u>\$ 192,621,019</u>	<u>\$ 207,194,753</u>

Chatham County, Georgia
Changes in Fund Balances of Governmental Funds
Last Ten Fiscal Years
(modified accrual basis of accounting)

	Fiscal Year				
	1998	1999	2000*	2001	2002
Revenues					
Property tax	\$ 67,845,785	\$ 69,510,007	\$ 26,180,818	\$ 76,148,722	\$ 69,064,044
Local option sales tax	7,622,664	7,804,705	4,160,719	8,346,449	8,568,769
Other taxes	42,658,152	45,983,815	24,757,694	46,321,182	57,696,817
Penalties and Interest	12,363,919	9,797,133	2,431,928	1,954,951	2,108,384
Licenses and permits	1,785,688	1,299,580	1,151,927	1,790,208	1,198,285
Homeowners tax relief grant					
Revenue from other gov't units	11,080,660	8,727,803	3,587,515	11,805,432	9,718,028
Charges for services	1,209,134	1,537,403	884,369	9,925,853	9,601,148
Fines and fees	6,686,106	6,632,813	3,167,639	5,334,926	5,165,863
Investment Income					4,687,673
Other revenue	3,908,385	4,540,846	2,382,055	9,784,304	4,769,567
Total revenues	155,160,493	155,834,105	68,704,664	171,412,027	172,578,578
Expenditures					
General government	20,536,753	18,931,698	8,910,165	20,600,407	19,822,695
Judiciary	19,299,985	20,545,214	10,664,523	17,033,806	18,300,436
Public safety	29,541,478	31,765,327	16,036,060	40,262,831	42,456,799
Public works	12,502,406	6,172,178	1,904,257	4,239,640	38,405,970
Health and Welfare	7,227,923	7,225,518	3,552,232	7,386,005	9,446,215
Culture and recreation	6,476,168	6,410,014	3,603,148	7,781,509	10,444,552
Housing and development				548,395	1,279,262
Capital Outlay	50,535,714	78,910,575	49,476,915	56,095,712	23,974,368
Debt Service					
Principal	3,622,911	3,677,241	3,613,072	5,788,599	8,380,671
Interest	3,267,629	3,390,641	1,651,737	3,800,747	3,352,543
Total expenditures	153,010,967	177,028,406	99,412,109	163,537,651	175,863,511
Excess of revenues over (under) expenditures	2,149,526	(21,194,301)	(30,707,445)	7,874,376	(3,284,933)
Other financing sources (uses)					
Transfers in	5,706,606	10,551,210	3,181,899	1,483,255	5,489,282
Transfers out	(11,767,862)	(19,010,447)	(6,838,116)	(9,729,800)	(10,250,753)
Settlement Proceeds					2,292,526
Proceeds from Sale of Trade Center					17,700,000
Capital Leases	1,065,044	3,630,666		1,852,450	
Debt Issuance Proceeds		9,300,000			
Premium on Debt issuance					
Debt Issuance Refunding Proceeds					
Payment to Refunded Bond Escrow Agent					
Total other financing sources (uses)	(4,996,212)	4,471,429	(3,656,217)	(6,394,095)	15,231,055
Net change in fund balances	\$ (2,846,686)	\$ (16,722,872)	\$ (34,363,662)	\$ 1,480,281	\$ 11,946,122
Debt services as a percentage of noncapital expenditures	5.6%	5.3%	8.4%	6.1%	7.8%

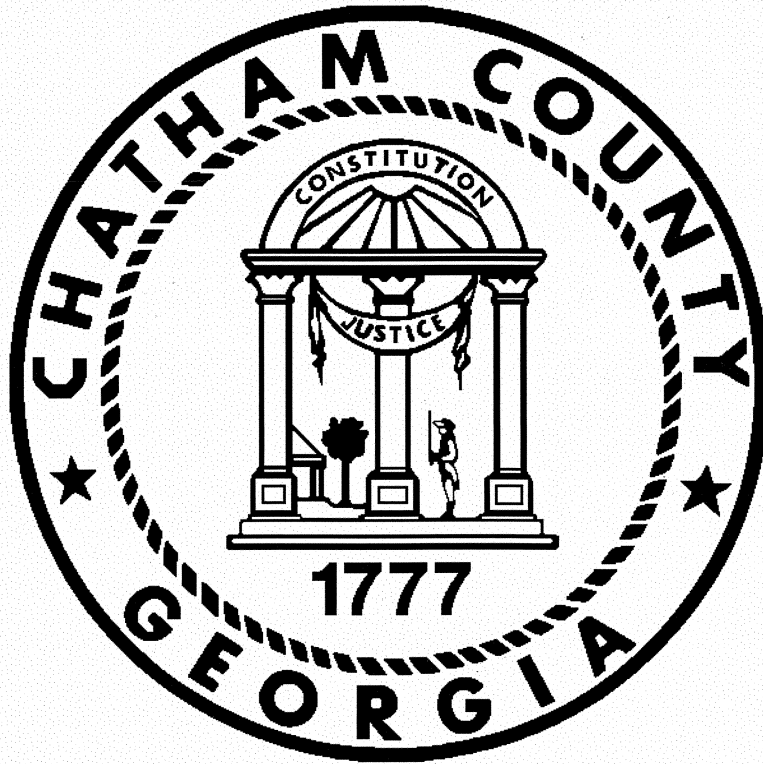
* Six month fiscal period

Fiscal Year				
2003	2004	2005	2006	2007
\$ 73,237,473	\$ 82,750,870	\$ 86,980,432	\$ 104,352,737	\$ 116,150,102
8,306,131	8,750,846	9,249,775	10,582,405	11,340,317
60,578,538	57,087,983	60,603,673	67,567,352	73,143,916
1,248,836	1,808,209	1,510,494	1,540,502	1,357,969
1,081,253	1,829,092	1,136,300	1,222,548	1,179,107
	3,488,275	3,612,441	3,931,963	3,996,029
7,028,810	5,750,084	6,435,251	8,013,138	7,909,650
12,547,031	10,229,259	11,342,194	11,486,708	11,869,879
5,403,653	5,588,261	5,711,945	5,404,765	5,779,874
3,175,409	1,642,692	4,980,101	6,805,336	11,412,977
4,293,955	1,571,843	1,173,356	1,753,418	2,670,657
176,901,089	180,497,414	192,735,962	222,660,872	246,810,477
20,082,941	21,181,708	24,016,367	25,758,655	28,550,112
16,565,051	17,537,217	19,787,110	21,751,337	23,304,201
46,540,134	45,734,051	49,157,991	55,809,616	60,604,208
33,836,879	5,112,330	5,776,600	5,975,556	6,461,241
9,854,872	9,108,951	9,789,185	9,304,219	9,414,523
8,958,031	7,492,517	8,270,291	9,155,539	9,323,037
1,376,179	1,450,885	1,875,603	2,845,698	3,179,079
12,416,556	36,456,440	48,003,058	54,077,355	71,710,508
4,896,402	14,751,374	3,932,425	4,139,581	3,841,360
3,036,617	3,089,763	3,299,340	1,560,742	1,908,476
157,563,662	161,915,236	173,907,970	190,378,298	218,296,745
19,337,427	18,582,178	18,827,992	32,282,574	28,513,732
4,352,426	4,250,937	2,395,058	16,122,395	11,470,537
(13,205,106)	(13,085,936)	(5,289,578)	(22,307,997)	(18,630,923)
4,596,057	2,050,000		265,000	1,279,942
		717,431	221,126	-
		29,055,000	6,075,000	-
		(17,404,290)	(6,291,317)	-
(4,256,623)	(6,784,999)	9,473,621	(5,915,793)	(5,880,444)
\$ 15,080,804	\$ 11,797,179	\$ 28,301,613	\$ 26,366,781	\$ 22,633,288
7.8%	11.9%	4.6%	3.2%	3.1%

Chatham County, Georgia
Governmental Activities Tax Revenues By Source
Last Six Fiscal Years
(accrual basis of accounting)

<u>Fiscal Year</u>	<u>Property Tax</u>	<u>General Sales Tax</u>	<u>Special Purpose Local Option Sales Tax</u>	<u>Other Taxes</u>	<u>Total</u>
2002	\$ 80,245,189	\$ 8,568,769	\$ 44,071,115	\$ 5,056,933	\$ 137,942,006
2003	83,128,587	8,909,793	45,192,025	6,476,720	143,707,125
2004	86,238,752	8,750,846	51,669,376	7,520,307	154,179,281
2005	90,412,938	9,249,775	52,626,584	8,203,505	160,492,802
2006	104,165,430	10,757,985	60,501,173	7,551,652	182,976,240
2007	117,172,970	11,131,700	63,129,402	8,837,226	200,271,298

Note: 10 years information not available. GASB 34 implementation year was 2002



Chatham County, Georgia
Assessed Value and Estimated Actual Value of Taxable Property
Consolidated & Unincorporated Data
Last Eight Fiscal Years

Fiscal Year Ended June 30	Real Property		Personal Property		Less: Tax Exempt Real Property
	Residential Property	Commercial Property	Motor Vehicles	Other	
Consolidated County (General Fund) Digest:					
2000	\$ 3,135,857,423	\$ 2,769,447,350	\$ 496,879,597	\$ 243,211,967	\$ 913,871,325
2001	3,419,699,557	2,849,270,241	531,461,750	253,172,769	1,163,471,399
2002	3,888,107,649	3,021,850,623	533,813,650	279,615,985	1,369,072,186
2003	4,390,125,896	3,221,350,052	529,470,980	287,844,738	1,668,328,563
2004	4,858,175,369	3,389,401,328	531,347,580	290,825,379	1,905,144,394
2005	5,535,248,378	3,814,983,174	536,571,680	302,868,863	2,253,017,477
2006	6,686,669,784	4,272,421,397	541,145,780	316,897,015	2,737,009,482
2007	7,815,086,276	4,788,280,472	584,847,980	321,696,198	3,179,281,578
Chatham Area Transit Authority Digest:					
2000	\$ 2,718,014,531	\$ 2,522,876,360	\$ 431,731,432	\$ 231,554,346	\$ 819,214,603
2001	2,943,137,203	2,565,762,707	450,420,370	236,782,093	1,031,579,993
2002	3,288,586,714	2,676,345,147	458,978,760	255,411,767	1,198,510,515
2003	3,654,788,391	2,812,717,899	452,232,490	259,863,320	1,456,034,502
2004	4,034,208,968	2,942,832,106	451,932,020	260,913,755	1,661,427,506
2005	4,562,524,985	3,299,526,552	456,324,860	264,365,322	1,964,626,663
2006	5,436,024,456	3,667,029,321	448,517,100	269,749,480	2,361,278,193
2007	6,284,370,985	4,064,277,921	488,333,370	263,616,477	2,733,221,126
Unincorporated County (Special Service District Fund) Digest:					
2000	\$ 1,577,268,833	\$ 1,197,587,546	\$ 202,281,128	\$ 127,781,929	\$ 423,695,614
2001	1,722,754,337	1,203,441,307	215,080,930	122,955,467	575,626,859
2002	1,981,144,447	1,243,916,405	217,434,660	132,317,742	700,490,940
2003	2,217,724,445	1,324,698,662	221,870,670	138,153,413	904,326,424
2004	2,462,965,273	1,282,510,228	222,536,960	144,487,042	1,005,671,108
2005	2,782,640,914	1,396,385,820	219,520,270	143,328,950	1,188,259,278
2006	3,281,502,516	1,513,513,942	216,108,460	152,992,991	1,451,260,336
2007	3,734,376,567	1,709,310,895	237,971,560	161,439,494	1,682,145,961

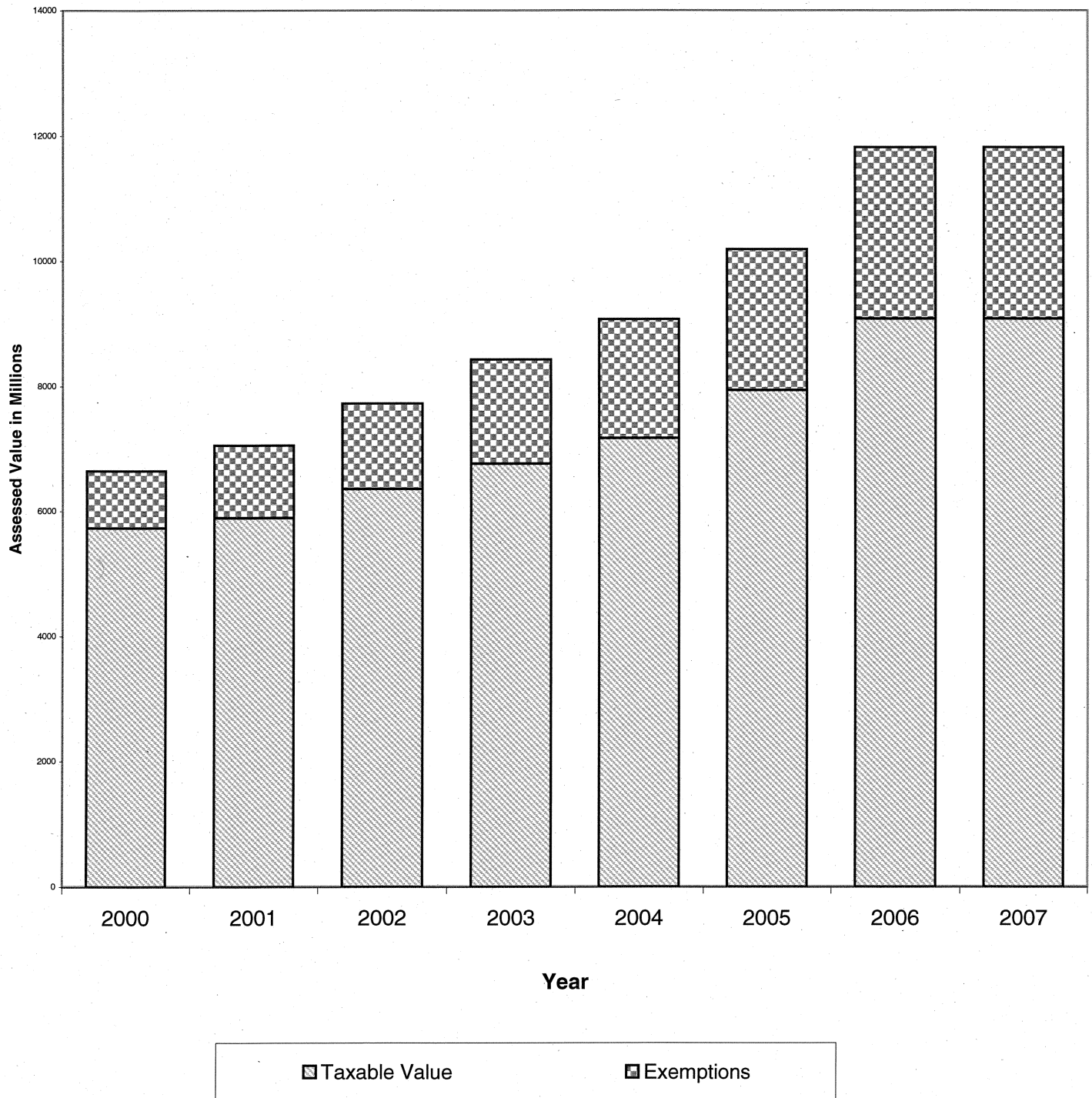
Note: 10 years of information not available.

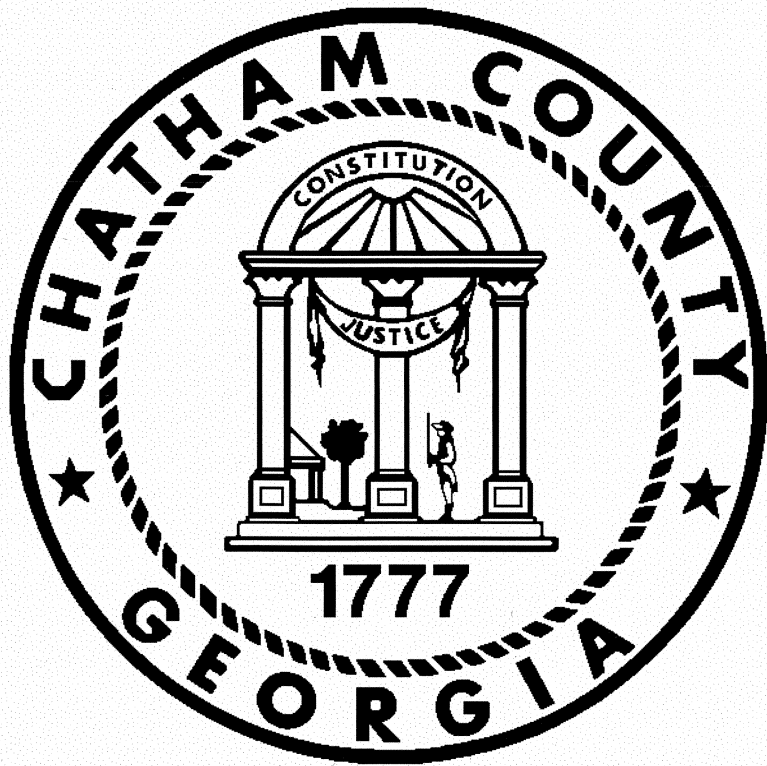
Source: Tax Digests for Chatham County

(Continued)
G-12

<u>Total Taxable Assessed Value</u>	<u>Total Direct Tax Rate</u>	<u>Estimated Actual Taxable Value</u>	<u>Assessed Value as a Percentage of Actual Value</u>
\$ 5,731,525,012	10.439	\$ 14,328,812,530	40%
5,890,132,918	10.367	14,725,332,295	40%
6,354,315,721	10.367	15,885,789,303	40%
6,760,463,103	10.367	16,901,157,758	40%
7,164,605,262	10.367	17,911,513,155	40%
7,936,654,618	11.037	19,841,636,545	40%
9,080,124,494	10.837	22,700,311,235	40%
10,330,629,348	10.514	25,826,573,370	40%
\$ 5,084,962,066	0.858	\$ 12,712,405,165	40%
5,164,522,380	0.853	12,911,305,950	40%
5,480,811,873	0.82	13,702,029,683	40%
5,723,567,598	0.82	14,308,918,995	40%
6,028,459,343	0.82	15,071,148,358	40%
6,618,115,056	0.82	16,545,287,640	40%
7,460,042,164	0.82	18,650,105,410	40%
8,367,377,627	0.82	20,918,444,068	40%
\$ 2,681,223,822	3.489	\$ 6,703,059,555	40%
2,688,605,182	3.475	6,721,512,955	40%
2,874,322,314	3.475	7,185,805,785	40%
2,998,120,766	3.475	7,495,301,915	40%
3,106,828,395	3.475	7,767,070,988	40%
3,353,616,676	3.475	8,384,041,690	40%
3,712,857,573	3.475	9,282,143,933	40%
4,160,952,555	3.475	10,402,381,388	40%

**Chatham County, Georgia
Total Taxable Assessed Value and Exemptions
(Consolidated Digest General Fund)**





**Chatham County, Georgia
Property Tax Rates
Last Ten Fiscal Years**

City of Savannah

County								
Fiscal Year	General Fund	Debt Service Fund	Chatham Area Transit Authority	Total County	Board of Education	City	State	Total Direct & Overlapping Rates
1998	11.640		0.950	12.590	19.14	16.50	0.25	48.480
1999	11.010		0.900	11.910	19.83	14.80	0.25	46.790
2000	10.439		0.858	11.297	18.84	13.70	0.25	44.087
2001	10.367		0.853	11.220	18.576	13.50	0.25	43.546
2002	10.367		0.820	11.187	17.550	13.30	0.25	42.287
2003	10.367		0.820	11.187	17.768	13.30	0.25	42.505
2004	10.367		0.820	11.187	17.600	13.30	0.25	42.337
2005	11.037		0.820	11.857	17.277	12.90	0.25	42.284
2006	10.837		0.820	11.657	15.817	12.70	0.25	40.424
2007	10.537		0.820	11.357	13.795	12.50	0.25	37.902

Other incorporated areas are shown with year 2007 millage rates as follows:

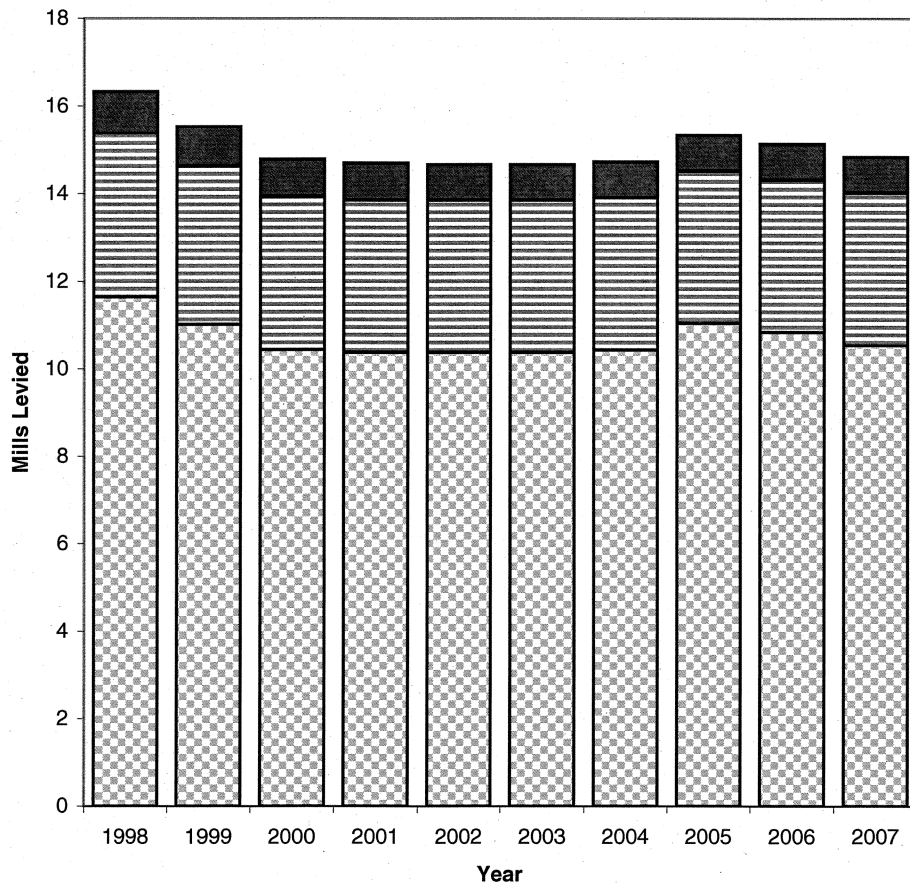
	<u>2007 Millage Rate</u>
Tybee Island	3.74
Town of Pooler	4.39
Thunderbolt	6.08
Garden City	None
Port Wentworth	4.498
Bloomingdale	None
Vernonburg	None

Chatham County, Unincorporated

County						
General Fund	Special Service	Chatham Area Transit Authority	Total County	Board of Education	State	Total Direct & Overlapping Rates
11.640	3.740	0.950	16.330	19.14	0.25	35.720
11.010	3.620	0.900	15.530	19.83	0.25	35.610
10.439	3.489	0.858	14.786	18.84	0.25	33.876
10.367	3.475	0.853	14.695	18.576	0.25	33.521
10.367	3.475	0.820	14.662	17.550	0.25	32.462
10.367	3.475	0.820	14.662	17.768	0.25	32.680
10.367	3.475	0.820	14.662	17.600	0.25	32.512
11.037	3.475	0.820	15.332	17.277	0.25	32.859
10.837	3.475	0.820	15.132	15.817	0.25	31.199
10.537	3.475	0.820	14.832	13.795	0.25	28.877

Chatham County, Georgia

County Government Property Tax Rates



General Special Revenue CAT

**Chatham County, Georgia
Principal Property Taxpayers
Current Year and Nine Years Ago**

Taxpayer	2007			1998		
	Taxable Assessed Value	Rank	Percentage of Total Taxable Assessed Value	Taxable Assessed Value	Rank	Percentage of Total Taxable Assessed Value
Gulfstream	\$ 397,062,834	1	3.08%	\$ 210,121,692	2	4.13%
International Paper (Union Camp)	203,337,303	2	1.58%	291,974,326	1	5.74%
Southern Energy	115,339,493	3	0.89%	-	-	-
Savannah Electric	108,413,200	4	0.84%	90,471,889	3	1.78%
Tronox Pigments	75,436,538	5	0.58%	68,008,486	5	1.34%
Weyerhaeuser	71,981,282	6	0.56%	-	-	-
Walmart	71,352,290	7	0.55%	-	-	-
Savannah Foods	60,663,671	8	0.47%	42,164,574	7	0.83%
Home Depot	55,252,141	9	0.43%	40,734,979	8	0.80%
Bell South	53,398,803	10	0.41%	45,144,975	6	0.89%
U S Prime (Oglethorpe Mall)				32,011,952	9	0.63%
Stone Savannah				82,486,786	4	1.62%
Sav'h Teachers (Savannah Mall)				26,753,024	10	0.52%
Sub-Total	<u>\$ 1,212,237,555</u>		<u>9.39%</u>	<u>\$ 929,872,683</u>		<u>18.28%</u>
All Others	11,689,560,192		90.61%	4,158,325,287		81.72%
Total	<u><u>\$ 12,901,797,747 *</u></u>		<u><u>100.00%</u></u>	<u><u>\$ 5,088,197,970 *</u></u>		<u><u>100.00%</u></u>

Source: Chatham County Board of Assessors

* Mobile Homes and Motor Vehicles are excluded

**Chatham County, Georgia
Property Tax Levies and Collections
Consolidated Digest
Last Five Fiscal Years**

Year Ended	Total Tax Levy	Collected within the Fiscal Year of the Levy		Collections in Subsequent Years	Total Collections to Date	
		Amount	Percentage of Levy		Amount	Percentage of Levy
2003	\$ 70,684,524	\$ 18,528,436	26.21%	\$ 52,125,021	\$ 70,653,457	99.96%
2004	75,162,003	21,584,466	28.72%	53,511,313	75,095,779	99.91%
2005	88,608,340	23,525,814	26.55%	64,907,368	88,433,182	99.80%
2006	100,840,116	28,658,157	28.42%	70,961,115	99,619,272	98.79%
2007	40,766,662 *	32,673,326	80.15%	0	32,673,326	80.15%

* Tax Levy for 2007 is for First Installment Billing Only.

Note: Prior year's information not available

Source: Chatham County Tax Commissioner
(Includes Real and Personal Property Only)

Chatham County, Georgia
Ratios of Outstanding Debt by Type
Last Six Fiscal Years

Fiscal Year	Governmental Activities			Business-Type Activities		Total Primary Government	Percentage of Personal Income	Per Capita
	Contractual Obligations	Capital Leases	Other	Contractual Obligations	Capital Leases			
2002	\$ 45,390,000	\$ 4,919,095	\$ 279,648	\$ 5,475,000	\$ 229,084	\$ 56,292,827	0.053%	\$ 29,792
2003	46,768,677	3,310,051	209,670	13,223,916	88,071	63,600,385	0.047%	30,153
2004	33,411,363	4,035,969	139,692	7,504,371	196,821	45,288,216	0.072%	32,543
2005	42,595,466	2,999,419	129,714	6,983,441	129,734	52,837,774	0.064%	33,863
2006	39,780,761	2,179,520	119,736	6,258,179	75,021	48,413,217	0.073%	35,192
2007	36,532,009	2,876,831	109,758	5,494,937	34,773	45,048,308	0.079%	35,544

Note: 10 year information not available. GASB 34 implementation year was 2002.

Chatham County, Georgia
Ratios of General Bonded Debt Outstanding
Last Six Fiscal Years

<u>Fiscal Years</u>	<u>General Obligation Bonds</u>	<u>Less: Amounts Available in Debt Service Fund</u>	<u>Total</u>	<u>Percentage of Estimated Actual Taxable Value of Property</u>	<u>Per Capita</u>
2002	\$ -	\$ -	\$ -	-	\$ -
2003	-	-	-	-	-
2004	-	-	-	-	-
2005	-	-	-	-	-
2006	-	-	-	-	-
2007	-	-	-	-	-

Note: 10 years of information not available. GASB 34 implementation year was 2002.

Chatham County, Georgia
Direct and Overlapping Governmental Activities Debt
As of June 30, 2007

Governmental Unit	Debt Outstanding	Estimated Percentage Applicable	Estimated Share of Overlapping Debt
Chatham County Georgia:			
General Obligation Bonded Debt	\$ -	100.00%	\$ -
Contractual Obligations:			
Downtown Savannah Authority (Chatham County Projects) Series 2005	23,895,000	100.00%	23,895,000
Chatham County Public Health Facilities Projects	1,045,000	100.00%	1,045,000
Downtown Savannah Authority (Chatham County Projects) Series 1999	1,230,000	100.00%	1,230,000
Downtown Savannah Authority (Chatham County Projects) Series 2005A	6,045,000	100.00%	6,045,000
Mosquito Control Facility	4,317,009	100.00%	4,317,009
City of Savannah, Georgia:			
General Obligation Bonded Debt	-	100.00%	-
Contractual Obligations:			
Resource Recovery Development Authority	33,325,000	100.00%	33,325,000
Downtown Savannah Authority (Parking Improvements)	24,820,000	100.00%	24,820,000
Downtown Savannah Authority (Stormwater Project)	21,290,000	100.00%	21,290,000
Downtown Savannah Authority (Capital Improvement Projects)	16,830,000	100.00%	16,830,000
Chatham-Savannah School Board:			
General Obligation Bonded Debt	107,295,000	100.00%	107,295,000
Contractual Obligations			
Downtown Savannah Authority (Improvement Project)	<u>10,035,000</u>	100.00%	<u>10,035,000</u>
Total	<u>\$ 250,127,009</u>		<u>\$ 250,127,009</u>

**Chatham County, Georgia
Legal Debt Margin Information
Last Six Fiscal Years**

	<u>2002</u>	<u>2003</u>	<u>2004</u>	<u>2005</u>	<u>2006</u>	<u>2007</u>
Debt limit	\$ 728,364,925	\$ 788,379,570	\$ 847,974,575	\$ 956,036,113	\$1,113,679,071	\$1,275,695,215
Total net debt applicable to limit	<u>0</u>	<u>0</u>	<u>0</u>	<u>0</u>	<u>0</u>	<u>0</u>
Legal debt margin	<u>\$ 728,364,925</u>	<u>\$ 788,379,570</u>	<u>\$ 847,974,575</u>	<u>\$ 956,036,113</u>	<u>\$1,113,679,071</u>	<u>\$1,275,695,215</u>
Total net debt applicable to the limit as a percentage of debt limit	n/a	n/a	n/a	n/a	n/a	n/a

Legal Debt Margin Calculation for Fiscal Year 2007

Assessed value	\$ 13,509,910,926
Less: Exemptions for Bond Purposes	(752,958,781)
Total assessed value	<u>12,756,952,145</u>
Debt Limit (10% of net assessed value)	<u>1,275,695,215</u>
General Obligation Bonds	0
Amount set aside for repayment of general obligation debt	<u>0</u>
Total Net Debt Applicable to Limit	<u>0</u>
Legal Debt Margin	<u>\$ 1,275,695,215</u>

The Constitutional debt limitation applies to all general obligation bonds authorized. Additional general obligation bonds may be authorized to be issued if so approved by a majority of those voting in an election held for that purpose. Chatham County has no general obligation bonds authorized but unissued.

Note: 10 year information not available. GASB 34 implementation year was 2002.

**Chatham County, Georgia
Demographic and Economic Statistics
Last Ten Fiscal Years**

Fiscal Year	Population	Total Personal Income	Per Capita Personal Income	Median Age	School Enrollment	Unemployment Rate
1998	228,205	\$ 6,093,073,500	\$ 26,700	*	44,605	4.2 %
1999	227,099	6,250,672,876	27,524	*	44,593	4.3
2000	230,700	6,658,463,400	28,862	32.3	46,450	4.0
2001	242,250	7,131,597,750	29,439	*	44,763	3.9
2002	240,500	7,164,976,000	29,792	34.4	44,244	4.3
2003	235,270	7,094,096,310	30,153	34.4	46,050	4.1
2004	238,518	7,762,091,274	32,543	34.4	41,615	3.8
2005	240,903	8,157,698,289	33,863	34.5	43,452	4.6
2006	250,539	8,816,968,488	35,192	34.8	41,225	4.1
2007	253,044	8,994,195,936	35,544	34.8	41,273	4.4

* Information not available

Sources: US Census
Savannah Area Chamber of Commerce
Georgia Department of Labor

**Chatham County, Georgia
Principal Employers
Current Year and Nine Years Ago**

Employer	2007			1998		
	Employees	Rank	Percentage of Total County Employment	Number of Employees	Rank	Percentage of Total County Employment
Memorial Health University Health Center	5,351	1	4.27%	3,500	5	2.94%
Gulfstream Aerospace Corporation	5,000	2	3.99%	5,800	1	4.87%
Savannah-Chatham Board of Education	4,781	3	3.81%	4,500	3	3.78%
St. Joseph's/Candler	3,300	4	2.63%	2,450	7	2.06%
Ft. Stewart/Hunter Army Airfield	3,200	5	2.55%	4,787	2	4.02%
City of Savannah	2,500	6	1.99%	1,852	8	1.55%
Wal-Mart	2,182	7	1.74%			
Savannah College of Art and Design	1,457	8	1.16%			
Momentum Resources II, Inc.	1,438	9	1.15%			
Chatham County	1,356	10	1.08%	1,273	10	1.07%
Kroger				1,800	9	1.51%
State of Georgia				3,750	4	3.15%
Union Camp Corporation				3,250	6	2.73%
Total	30,565		24.38%	32,962		27.66%

Source: Savannah Area Chamber of Commerce
Georgia Department of Labor

Chatham County, Georgia
Full-time Equivalent County Government Employees by Function
Last Ten Fiscal Years

Function	<u>1998</u>	<u>1999</u>	<u>2000</u>	<u>2001</u>	<u>2002</u>	<u>2003</u>	<u>2004</u>	<u>2005</u>	<u>2006</u>	<u>2007</u>
General Government	267	279	280	282	283	289	293	313	338	351
Judiciary	384	297	302	299	304	307	307	318	329	332
Public Safety	552	653	653	653	656	626	637	638	469 (b)	511
Public Works	145	150	151	150	152	156	158	148	150	150
Health	42	42	42	42	43	30	30	30	30	30
Culture & Recreation	186	194	194	197	199	176	179	44	53	53
Housing & Development	24	25	25	26	30	31	33	33	36	38

(a) Library employees are now employees of the Live Oak Public Libraries

(b) Majority of Police and CNT personnel are now City of Savannah employees effective 2005

Chatham County, Georgia
Operating Indicators by Function
Last Six Fiscal Years

Function	2002	2003	2004	2005	2006	2007
General Government						
Real Property Reviews	25,000	25,000	32,000	30,000	32,000	32,000
Tax Bills Generated	189,000	190,000	191,000	192,000	200,000	205,000
Judiciary						
Marriage Licenses	2,100	2,239	2,250	2,300	2,350	2,965
Pistol Permits	1,250	1,260	1,260	1,310	1,950	1,365
Public Safety-Sheriff						
Meals Served	1,478,250	1,715,000	1,727,624	1,750,000	1,895,555	1,950,000
Inmates Booked	18,200	17,173	16,588	17,300	19,723	20,200
Avg Daily Jail Population	1,350	1,339	1,460	1,480	1,532	1,625
Public Works						
Bridge Openings	8,100	7,942	8,200	8,300	5,134	6,156
Yard Waste Recycled (in tons)	25,505	27,996	15,600	15,900	15,600	29,015
Other Recyclables (in tons)	982	1,194	1,102	1,080	1,671	1,128
Water & Sewer New Connections	N/A	286	385	333	351	360
Average Water Daily Consumption	N/A	1,265,942	1,472,811	1,412,808	1,104,000	1,240,064
Culture and Recreation						
Aquatic Center Admissions	70,000	72,000	79,000	80,000	85,246	78,396

Indicators prior to 2002 not available.
N/A= Information not Available

Chatham County, Georgia
Capital Asset Statistics by Function
Last Six Fiscal Years

Function	2002	2003	2004	2005	2006	2007
Judicial						
Courthouse	2	2	2	2	2	2
Public Safety:						
Sheriff						
Stations	1	1	1	1	1	1
Jail	1	1	1	1	1	1
Patrol Units	240	240	245	245	245	245
CNT Headquarters	0	0	0	1	1	1
Public Works:						
Solid Waste						
Collection Trucks	13	13	14	14	14	16
Highways & Streets						
Street Lights	5,100	5,320	5,480	5,680	5,680	5680
Traffic Signals	119	119	120	120	123	123
Miles of Streets/Roads	300	301	305	309	310	318
Culture & Recreation						
Parks Acreage	1,900	1,900	1,900	1,900	1900	1900
Parks	20	21	21	22	22	22
Swimming Pools	1	1	1	1	2	2
Tennis Courts	17	17	17	18	19	22
Community Centers	1	1	1	1	1	1
Sports Complex	5	5	5	5	5	9

Sources: Various county departments

Note: No capital asset indicators are available for the general government function.

