

CHATHAM COUNTY PURCHASING & CONTRACTING DEPARTMENT

ADDENDUM NO. 1 TO 14-0053-4

FOR: JENNIFER ROSS SOCCER COMPLEX DROP-OFF AND PARKING

PLEASE SEE THE FOLLOWING FOR ADDITIONS, CLARIFICATIONS AND/OR CHANGES:

SEE ATTACHED:

- 1. Responses to questions received. (1 sheet)**
- 2. Replace current Bid Sheet with the attached REVISED Bid Sheet. (1 sheet)**
- 3. Replace current Plan Sheets with the attached REVISED Plan Sheets (4 sheets):**
 - Layout and Striping (Sheet # 3)**
 - Paving Grading & Drainage (Sheet #4)**
 - Construction Details (Sheet # 13)**
 - Construction Details (Sheet # 14)**

BID OPENING REMAINS: 2PM, JUNE 19, 2014

THE PROPOSER IS RESPONSIBLE FOR MAKING THE NECESSARY CHANGES AND MUST ACKNOWLEDGE RECEIPT OF ADDENDUM.

6-11-14
DATE



ROBERT E. MARSHALL
SENIOR PROCUREMENT SPECIALIST
CHATHAM COUNTY

Jennifer Ross Parking and Drop-Off Addendum #1

1. Pay item 1034-should it read "Pavement Markings" deleting the word sign?
Line item 1034 should read "Pavement Markings."
2. The typical section indicates pervious pavers. Is any of this work in this contract?
If yes please set up appropriate pay items. Pavers, stone, and 8"x16" header curb.
Yes, pervious pavers are in the contract. A line item for pavers and 8"x16" header curb will be added to the bid sheet.
3. Can crush concrete be substituted for the graded aggregate base?
No, the aggregate shall consist of processed and blended crushed granite stone. Please refer to section 02600 of the City of Savannah Specifications base course.
4. For clarification the Savannah roadway spec is for loop road and the typical sections A-A & B-B are for the parking lot.
Please disregard the City of Savannah Standard Detail for Pavement. The typical Sections to be used include the parking lot, section A-A and section B-B. The included sections will be modified as follows:
 - A. 1.5" asphaltic conc. 9.5 mm surface course***
 - B. 2" asphaltic conc. 19 mm binder course***
 - C. 6" graded granite aggregate base***
 - D. Compacted sub-grade***
5. The Savannah typical section indicates asphalt surface 9.5 mm. There is no pay item for 9.5 mm. Will the County consider changing section A-A & B-B to asphalt surface 9.5 mm. Generally GDOT 12.5 mm is used for heavy travel areas not parking lots.
Please see response #4. Line item 1003 will be changed to 9.5 mm recycled asph. conc. Superpave
6. Is a permit going to be required to work on City's ROW? If yes who will acquire the permit?
Yes, a right of way encroachment permit from the City of Savannah will be required for this project, which the contractor is responsible for acquiring.
7. Are there defined collection points for the water quality sampling?
Yes, there is one sampling point at the downstream 18-in outfall to the canal.
8. Is it the responsibility of the prime contractor to engage an independent testing agency to process water quality samples, or does the County have another process the contractor is to follow with that regard?
It is the responsibility of the contractor to engage an independent testing agency.

JENNIFER ROSS PARKING AND DROP-OFF LOOP COST ESTIMATE (REVISED 6/11/14)

Pay Item	Description	Unit Price	Unit	Quantity	Cost
PAVING, GRADING & DRAINAGE					
1001	GRADING COMPLETE		LS	1	
1002	GR AGGR BASE CRS, INCL MATL		SY	2032	
1003	RECYCLED ASPH CONC 9.5 MM SUPERPAVE, INCL BITUM MATL & H LIME		TN	224	
1004	2" ASPHALTIC CONC. BINDER 19 MM SUPERPAVE		TN	168	
1005	BITUM TACK COAT		GL	610	
1006	CONCRETE VALLEY GUTTER		SY	11	
1007	CONC CURB & GUTTER, 6 IN X 18 IN, TP 2		LF	1388	
1008	CONC FLUSH HEADER CURB 12-in		LF	102	
1009	STORM DRAIN PIPE, 18 IN RCP		LF	156	
1010	ELLIPTICAL PIPE 14 IN X 23 IN		LF	48	
1011	SAFETY END SECTION, 18 IN, STORM DRAIN, 4:1 SLOPE		EA	5	
1012	ROOF INLET 4X4		EA	2	
1013	CONCRETE FLUME		EA	2	
1014	TRAFFIC CONTROL		LS	1	
1015	CONCRETE SIDEWALK 4-ft		LF	13	
1016	PERVIOUS PAVERS		SF	446	
1017	CONC FLUSH HEADER CURB 8-IN X 16-IN		LF	101	
1018	RIP-RAP		SY	18	

TEMPORARY EROSION CONTROL

1019	TEMPORARY GRASSING		SY	4840	
1020	MULCH		TN	20	
1021	CONSTRUCTION EXIT		EA	1	
1022	MAINTENANCE OF TEMPORARY SILT FENCE, TP A		LF	219	
1023	MAINTENANCE OF CONSTRUCTION EXIT		EA	1	
1024	WATER QUALITY MONITORING AND SAMPLING		EA	1	
1025	WATER QUALITY INSPECTIONS		MO	6	
1026	TEMPORARY SILT FENCE, TP A		LF	219	
1027	ROCK FILTER DAMN		EA	1	

PERMANENT EROSION CONTROL

1028	PERMANENT GRASSING		AC	1	
1029	AGRICULTURAL LIME		TN	2	
1030	LIQUID LIME		GL	3	
1031	FERTILIZER MIXED GRADE		TN	2	
1032	FERTILIZER NITROGEN CONTENT		LBS	50	
1033	EROSION CONTROL MATS, SLOPES		SY	701	

SIGNING AND MARKING

1034	STOP SIGN		EA	3	
1035	DO NOT ENTER SIGN		EA	1	
1036	PICK-UP AND DROP-OFF ONLY, NO PARKING SIGN		EA	2	
1037	NO LEFT TURN SIGN		EA	1	
1038	PAVEMENT MARKINGS		LS	1	

LANDSCAPING

1039	TREES AND LANDSCAPING		LS	1	
------	-----------------------	--	----	---	--

NAME / TITLE

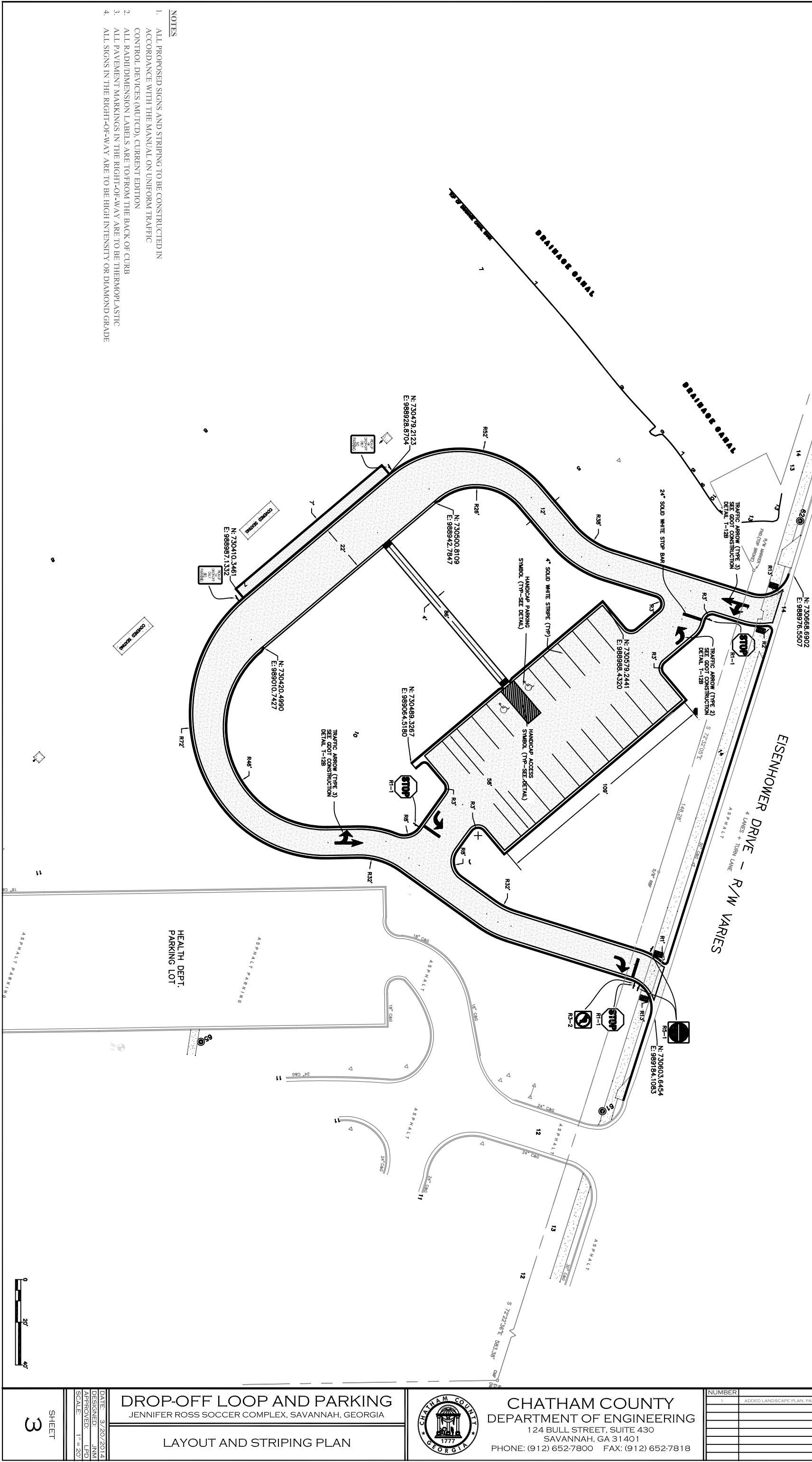
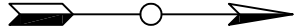
TOTAL

COMPANY

ADDRESS

PHONE / FAX NO'S / E-MAIL

CONTROL POINT CHART					
POINT	NORTHING	EASTING	ELEVATION	DESCRIPTION	
61	730579.071	989227.732	13.18	REBAR	
62	730671.760	988951.120	14.70	REBAR	
65	730390.810	989195.232	11.31	REBAR	



NOTES

- ALL PROPOSED SIGNS AND STRIPING TO BE CONSTRUCTED IN ACCORDANCE WITH THE MANUAL ON UNIFORM TRAFFIC CONTROL DEVICES (MUTCD), CURRENT EDITION
- ALL RADII/DIMENSION LABELS ARE TO/ROM THE BACK OF CURB
- ALL PAVEMENT MARKINGS IN THE RIGHT-OF-WAY ARE TO BE THERMOPLASTIC
- ALL SIGNS IN THE RIGHT-OF-WAY ARE TO BE HIGH INTENSITY OR DIAMOND GRADE



CHATHAM COUNTY
DEPARTMENT OF ENGINEERING
124 BULL STREET, SUITE 430
SAVANNAH, GA 31401
PHONE: (912) 652-7800 FAX: (912) 652-7818

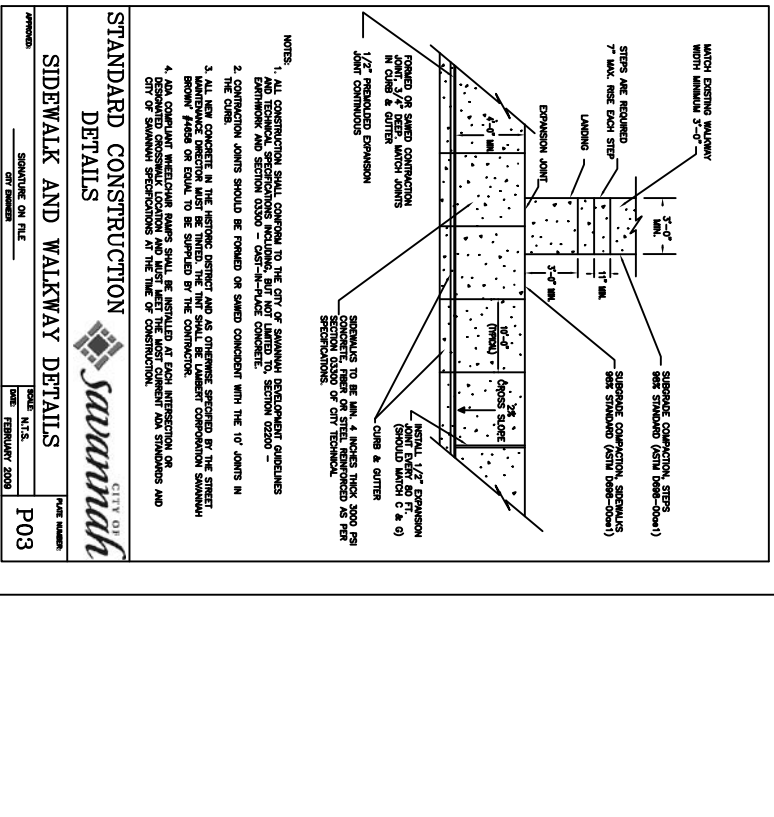
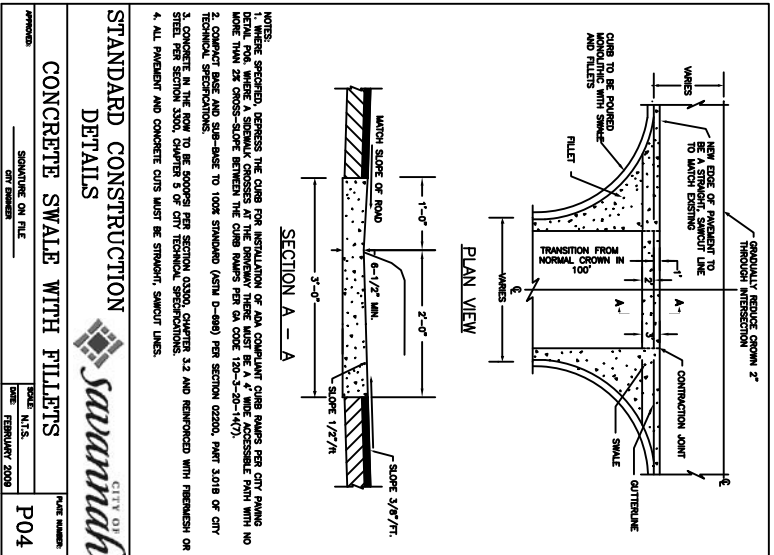
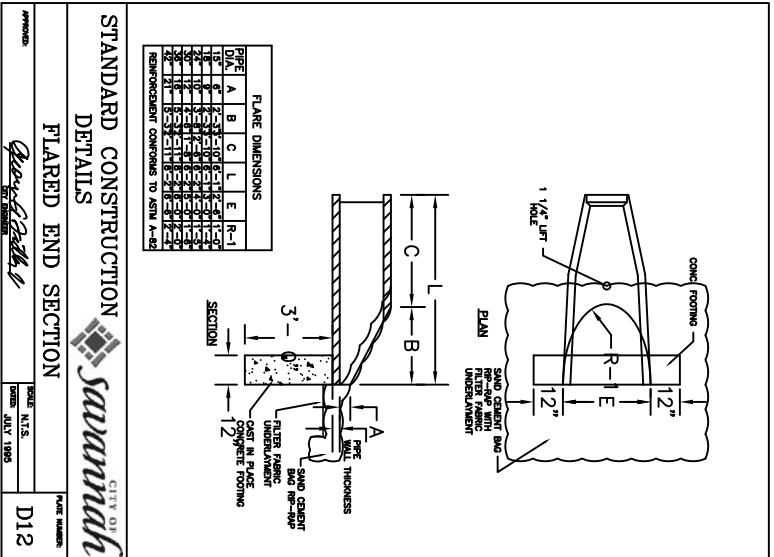
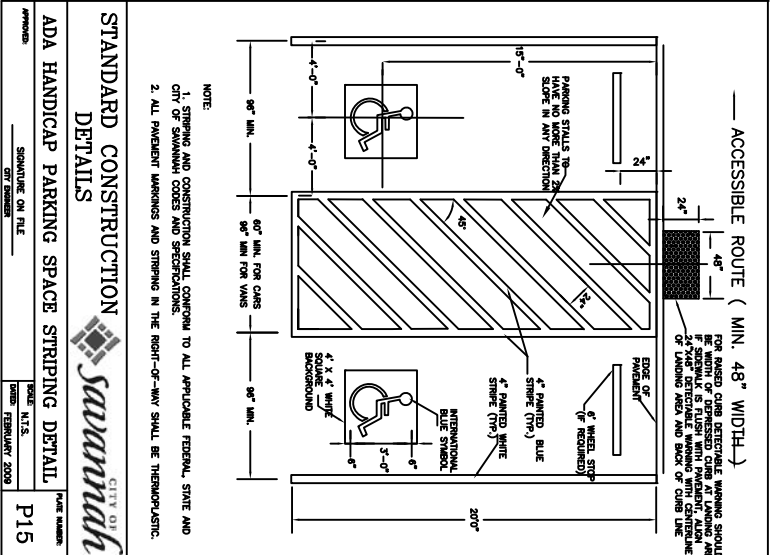
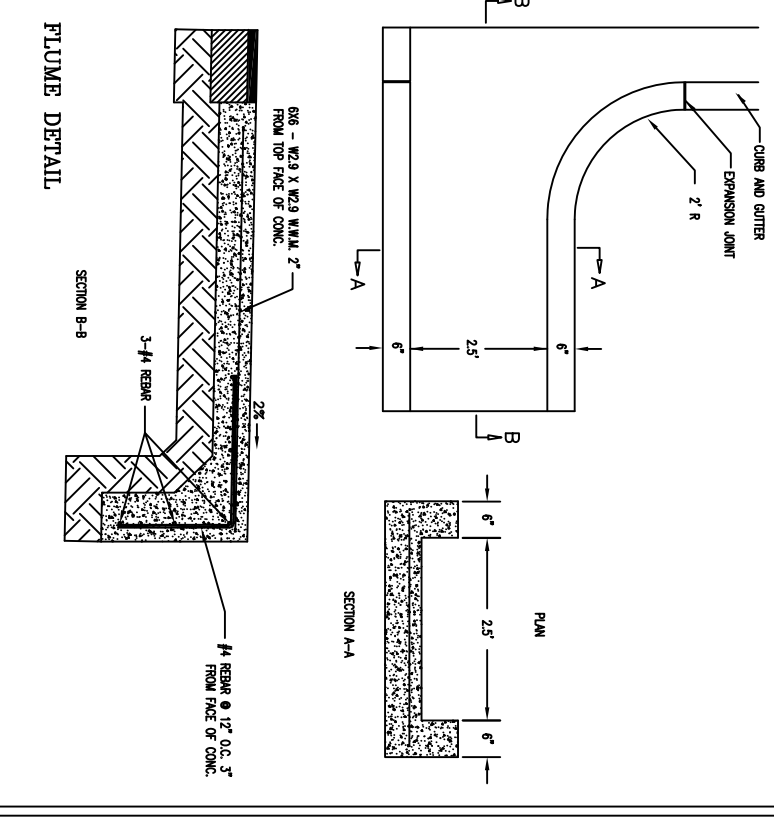
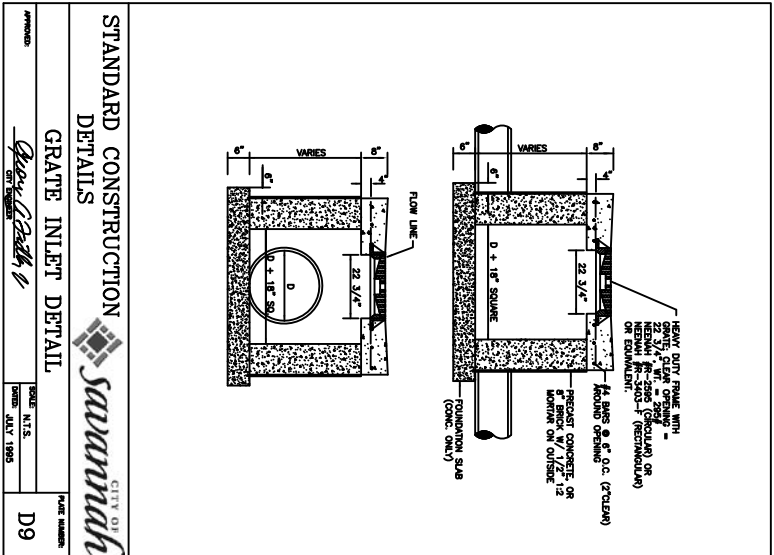
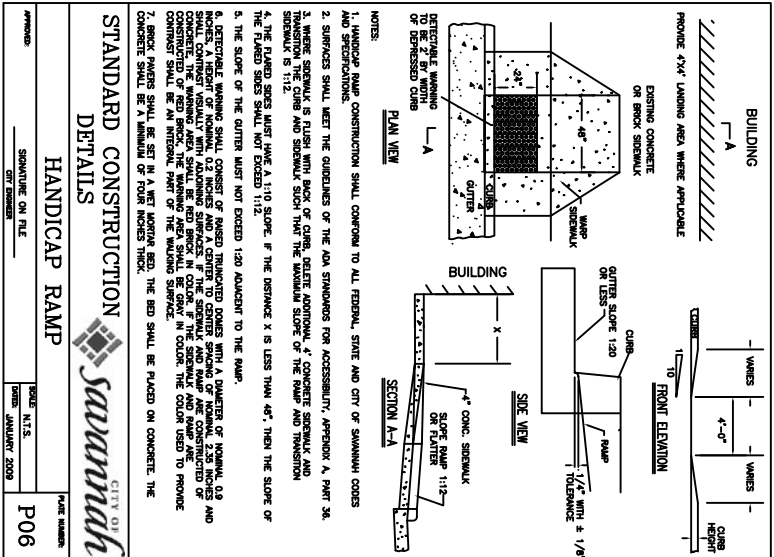
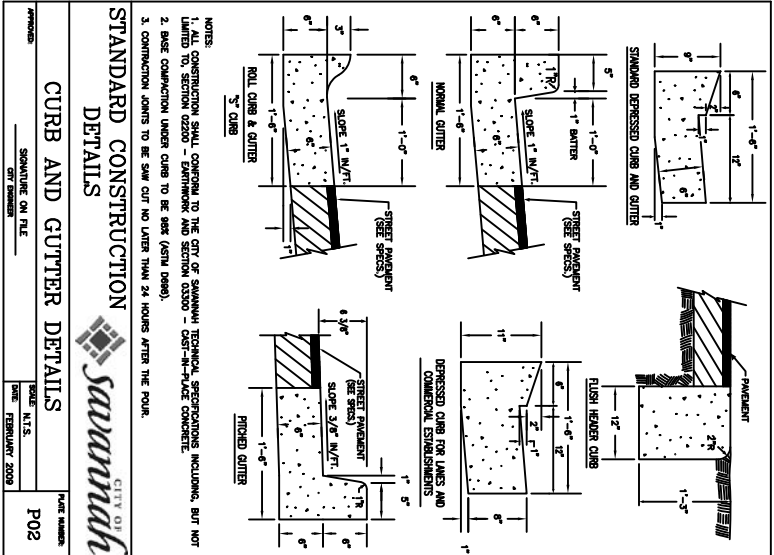
DROP-OFF LOOP AND PARKING
JENNIFER ROSS SOCCER COMPLEX, SAVANNAH, GEORGIA

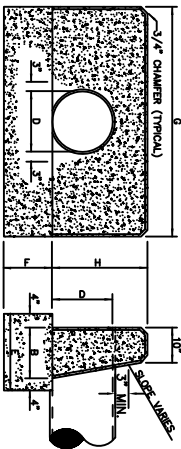
LAYOUT AND STRIPING PLAN

DATE: 3/26/2014
DESIGNED: JNM
APPROVED: LED
SCALE: 1"=20'

SHEET

3





NOTE:
WHEN DITCH PAVING IS SPECIFIED RECESS
SURFACE OF FOOTING TO ACCOMMODATE
THICKNESS OF DITCH PAVING.

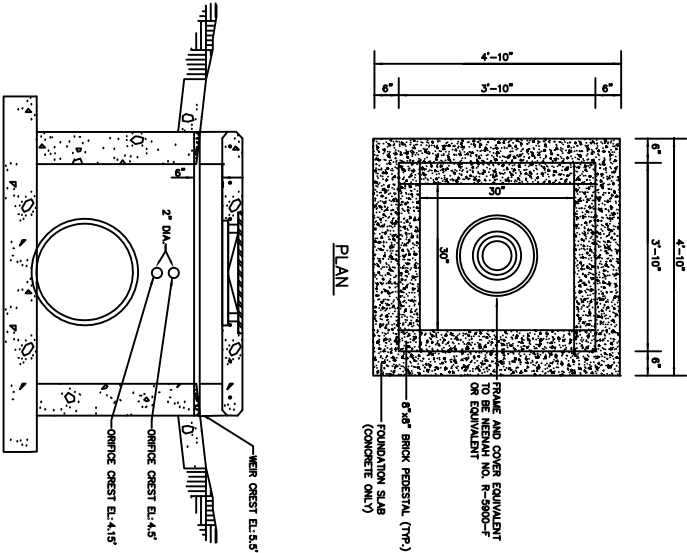
DIMENSIONS						QUANTITIES			
ONE ENDWALL			ONE ENDWALL			ONE ENDWALL			
OPENING	WALL	FOOTING	CLASS "B" CONCRETE	CUBIC FT	TOTAL	CLASS "B" CONCRETE	CUBIC FT	TOTAL	CLASS "B" CONCRETE
D	AREA	G	H	B	E	F	WALL	FOOT	CU FT
12"	0.8	4'-0"	2'-0"	1'-2"	1'-10"	1'-0"	7.2	7.3	14.5
15"	1.2	5'-0"	2'-5"	1'-2"	1'-10"	1'-2"	9.9	10.7	20.6
18"	1.8	6'-0"	2'-5"	1'-2"	1'-10"	1'-2"	13.6	14.4	28.0
24"	3.1	8'-0"	3'-0"	1'-4"	2'-0"	1'-4"	22.3	21.3	43.6
30"	4.9	10'-0"	3'-0"	1'-4"	2'-0"	1'-4"	34.7	26.3	61.0
36"	7.1	12'-0"	4'-0"	1'-6"	2'-2"	1'-6"	50.3	36.7	87.0
42"	9.8	14'-0"	4'-0"	1'-6"	2'-2"	1'-6"	68.3	36.7	105.0
48"	12.6	16'-0"	5'-0"	2'-0"	2'-0"	2'-0"	98.3	48.0	146.3
54"	16.0	18'-0"	5'-0"	2'-0"	2'-0"	2'-0"	130.4	108.0	238.4
60"	19.6	20'-0"	6'-0"	2'-0"	2'-0"	2'-0"	164.8	126.7	291.5
									10.79
									2.23

NOTE:
* FOR EACH ADDITIONAL PIPE LINE, 12" TO 30", ADD 1'-4" + 1.0.
30" AND ABOVE ADD 2'-0" + 1.0.

STANDARD CONSTRUCTION DETAILS

CONCRETE ENDWALLS STRAIGHT TYPE

APPROVED: *Quincy Smith* DATE: JULY 1995 SHEET: N.T.S. FILE NUMBER: D10

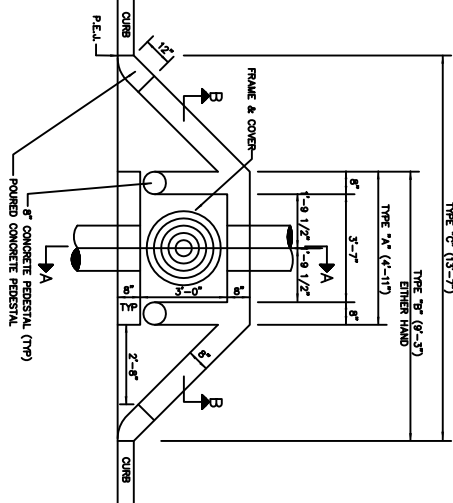
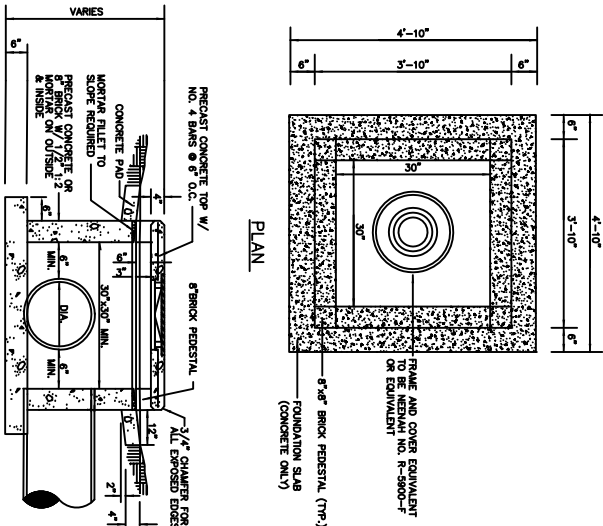


ROOF INLET/CONTROL STRUCTURE

STANDARD CONSTRUCTION DETAILS

ROOF INLET

APPROVED: *Quincy Smith* DATE: JULY 1995 SHEET: N.T.S. FILE NUMBER: D6

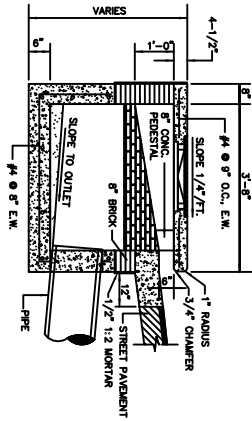


NOTE:
FRAME AND COVER TO BE MEDIUM
STRENGTH CONCRETE, NO. R-5000-F,
OR EQUIVALENT
WEIGHT 2509

STANDARD CONSTRUCTION DETAILS

PLAN OF CURB INLET

APPROVED: *Quincy Smith* DATE: JULY 1995 SHEET: N.T.S. FILE NUMBER: D1

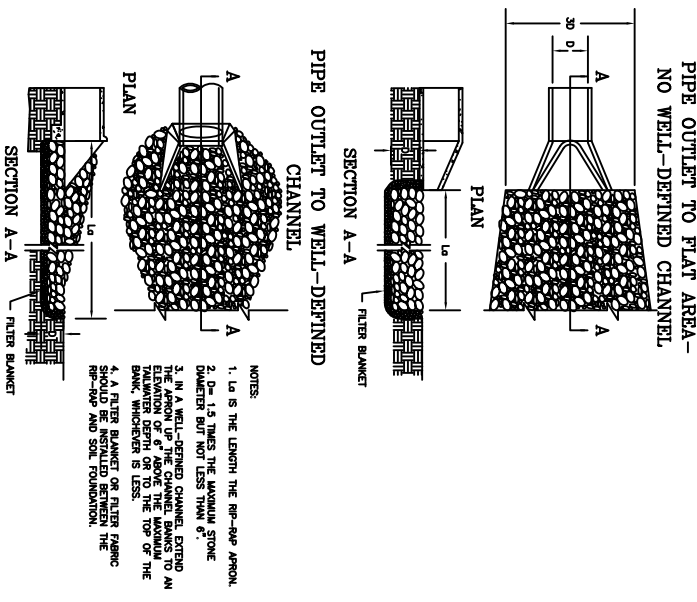


- NOTES:
- CHAMFER ALL EXPOSED CONCRETE
 - PIPE INLET TO CURB INLET SHALL BE CONSTRUCTED WITH BRICK AND MORTAR

STANDARD CONSTRUCTION DETAILS

CURB INLET - SECTION A-A

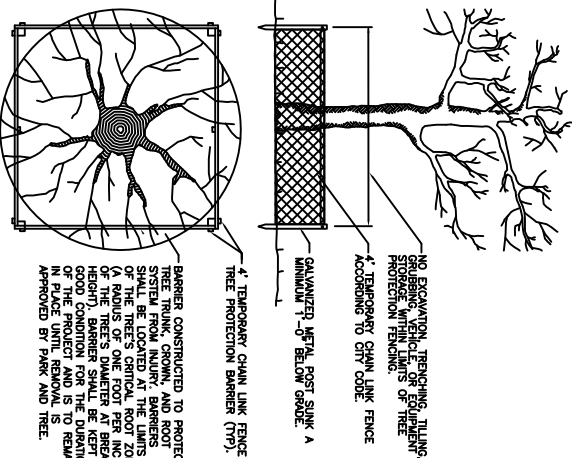
APPROVED: *Quincy Smith* DATE: JULY 1995 SHEET: N.T.S. FILE NUMBER: D3



STANDARD CONSTRUCTION DETAILS

RIP-RAP OUTLET PROTECTION

APPROVED: *Quincy Smith* DATE: DECEMBER 1995 SHEET: N.T.S. FILE NUMBER: E8

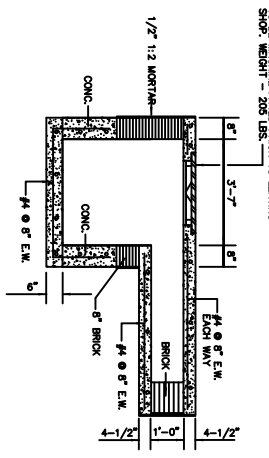


- NOTES:
- PROVIDE 4\"
 - MAKE CLEAN CUTS ON ROOTS EXPOSED BY GRADING AND BACKFILL IMMEDIATELY.
 - PROVIDE TEMPORARY PROTECTION WHERE FUNCTIONAL AND FEASIBLE.

STANDARD CONSTRUCTION DETAILS

TREE PLANTING

APPROVED: *Quincy Smith* DATE: JULY 2007 SHEET: N.T.S. FILE NUMBER: T2



- NOTES:
- MATCH TOP OF PRE ELEVATIONS WHEN DIFFERENT SIZE PIPES ARE CONSTRUCTED
 - TYPE "B" INLET SHOWN

STANDARD CONSTRUCTION DETAILS

CURB INLET SECTION B-B

APPROVED: *Quincy Smith* DATE: JULY 1995 SHEET: N.T.S. FILE NUMBER: D4



CHATHAM COUNTY
DEPARTMENT OF ENGINEERING
124 BULL STREET, SUITE 430
SAVANNAH, GA 31401
PHONE: (912) 652-7800 FAX: (912) 652-7818

DROP-OFF LOOP AND PARKING
JENNIFER ROSS SOCCER COMPLEX, SAVANNAH, GEORGIA

CONSTRUCTION DETAILS