

CHATHAM COUNTY PURCHASING & CONTRACTING DEPARTMENT

ADDENDUM NO. 1 TO 17-0053-4

FOR: BRADLEY POINT ROAD IMPROVEMENTS

PLEASE SEE THE FOLLOWING FOR ADDITIONS, CLARIFICATIONS AND/OR CHANGES:

NOTE: SEE ATTACHED PLAN SHEETS (7 sheets) THAT WERE OMITTED FROM THE ORIGINAL PLAN SHEET PACKAGE.

PLAN SHEET NO.:

Traffic Signal sheets

27.000

27.001

27.002

27.003

27.004

Proposed Sidewalk sheets


28.001

28.002

BID OPENING REMAINS: 2PM, WEDNESDAY, JULY 5, 2017

THE PROPOSER IS RESPONSIBLE FOR MAKING THE NECESSARY CHANGES AND MUST ACKNOWLEDGE RECEIPT OF ADDENDUM.

6/21/17
DATE



ROBERT E. MARSHALL
SENIOR PROCUREMENT/SPECIALIST
CHATHAM COUNTY

TRAFFIC SIGNAL GENERAL NOTES

1. THE COMPLETE SIGNAL INSTALLATION SHALL CONFORM TO ALL APPROPRIATE PARTS OF THE MANUAL ON UNIFORM TRAFFIC CONTROL DEVICES, CURRENT EDITION, INCLUDING SUBSEQUENT PUBLISHED RULINGS.
2. ALL MATERIALS AND WORK SHALL BE IN ACCORDANCE WITH THE GEORGIA DEPARTMENT OF TRANSPORTATION CURRENT STANDARD AND SUPPLEMENTAL SPECIFICATIONS AND STANDARD DETAILS FOR TRAFFIC SIGNAL INSTALLATION (WITH EXCEPTIONS AS DIRECTED BY THESE PLANS OR GDOT). INSTALLATION SHALL MEET CURRENT NFPA NATIONAL ELECTRICAL CODE AND ANSI NATIONAL ELECTRICAL SAFETY CODE.
3. MATERIAL CERTIFICATION IS REQUIRED PRIOR TO BEGINNING ANY SIGNAL INSTALLATION WORK. THE CONTRACTOR SHALL FOLLOW PROCEDURES OUTLINED IN THE SPECIAL PROVISIONS.
4. CONTRACTOR SHALL SUBMIT LOAD CALCULATIONS, SHOP DRAWINGS AND FOUNDATION DIMENSIONS OF POLES AND CATALOG CUT OF PROPOSED SIGNAL EQUIPMENT AND ELECTRICAL/LINE HARDWARE MATERIALS TO THE PROJECT ENGINEER FOR APPROVAL.
5. FOR STRAIN POLE FOUNDATION SIZE AND REINFORCEMENT, SEE STRAIN POLE AND MAST ARM POLE FOUNDATION SHEET.
6. THE CONTRACTOR SHALL LOCATE UNDERGROUND UTILITIES IN THE VICINITY OF NEW TRAFFIC SIGNAL POLES BEFORE INSTALLATION. MINOR SHIFTS (UP TO A MAXIMUM OF 5 FEET) IN LOCATION OF NEW SIGNAL POLES, AT THE DISCRETION OF THE ENGINEER, ARE ACCEPTABLE TO AVOID UNDERGROUND UTILITIES. MINIMUM CLEARANCES FROM EDGE OF PAVEMENT SHALL BE MAINTAINED. PLACEMENT OF THE SIGNAL HEADS MUST BE RETAINED AS SHOWN ON THE PLANS.
7. SIGNAL HEADS SHALL BE ERECTED TO PROVIDE AT LEAST 17 FEET BUT NO MORE THAN 19 FEET CLEARANCE FROM BOTTOM OF SIGNAL HEADS TO TOP OF ROAD SURFACE AND A MINIMUM OF 8 FEET MEASURED HORIZONTALLY BETWEEN CENTERS OF SIGNAL FACES.
8. THE CONTRACTOR SHALL MAINTAIN EXISTING TRAFFIC SIGNALS DURING CONSTRUCTION. THE CONTRACTOR SHALL BE RESPONSIBLE FOR ALL TRAFFIC SIGNAL AND/OR CONTROL SYSTEM ADJUSTMENT, INCLUDING TEMPORARY SUPPORT POLE LOCATION(S) REQUIRED BY THE PROJECT DURING THE INTERIM PERIOD THROUGH INSTALLATION OF NEW SIGNAL EQUIPMENT. AT NO TIME SHALL THE CONTRACTOR CAUSE ANY PART OF THE SIGNAL OPERATION TO BE INOPERABLE.
9. WHEN APPLICABLE TO THE PLANS, THE CONTRACTOR MUST INSTALL AND TEST ALL NEW SIGNAL ITEMS PRIOR TO REMOVING EXISTING SIGNALS FROM SERVICE.
10. WHEN APPLICABLE TO THE PLANS, CONTRACTOR WILL BE REQUIRED TO PROVIDE A NEW RISER, CONDUIT, CONDUCTORS AND DISCONNECT TO PROVIDE POWER SERVICE INTO THE CONTROLLER CABINET.
11. THE CONTRACTOR WILL BE RESPONSIBLE FOR ALL NEW GUYS ON EXISTING POLES WHEN ATTACHING SPAN WIRE OR FIBER OPTIC INTERCONNECT CABLE TO THE POLES, WHEN REQUIRED, AS DIRECTED BY THE ENGINEER.
12. SHIELDED CABLE SHALL BE USED FOR DETECTOR RUNS, AS SHOWN ON THE DETAIL SHEET. DETECTORS SHALL HAVE SEPERATE LEAD-INS TO THE CONTROLLER CABINET. LOOP AND PEDESTRIAN DETECTOR CABLES SHALL BE 14 AWG IMSA 50-2 3-PAIR EQUIVALENT CABLE.
13. ENSURE DETECTION LOOPS ARE INSTALLED PROMPLY. FAILURE TO DO SO WILL RESULT IN ASSESSMENT OF LIQUIDATED DAMAGES IN ACCORDANCE WITH SECTION 150.08 OF THE SPECIFICATIONS.
14. CONDUIT UNDER DRIVEWAYS AND ROADWAYS SHALL BE TYPE 3 (SDR 11 HDPE), RIGID METAL OR ENCASED IN CONCRETE. ALL CONDUIT RUNS GREATER THAN 50 FEET IN LENGTH SHALL BE BURIED TO A MINIMUM DEPTH OF 48 INCHES, UNLESS APPROVED BY THE ENGINEER.
15. WHEN APPLICABLE TO THE PLANS, DETECTABLE MARKING TAPE LABELED "CPO CALL (912)652-7800" SHALL BE INSTALLED DIRECTLY ABOVE ALL UNDERGROUND CONDUIT CONTAINING FIBER OPTIC INTERCONNECT CABLE. AN INSULATED TRACING WIRE, GROUNDED ON ONE END, SHALL BE INSTALLED INSIDE A CONDUIT SEPERATE FROM THE FIBER OPTIC INTERCONNECT CABLE.
16. SIGNAL HEADS ON MAST ARMS SHALL HAVE BACK PLATES AND BE RIGID MOUNTED.
17. VEHICLE AND PEDESTRIAN SIGNAL HEADS AND HARDWARE SHALL BE ALL BLACK IN COLOR. VEHICLE SIGNAL HEADS SHALL HAVE TUNNEL VISORS AND SHALL BE MADE OF POLYCARBONATE MATERIAL. VEHICLE SIGNAL HEADS SHALL BE EQUIPPED WITH LED MODULES.
18. PEDESTRIAN SIGNAL HEADS ATTACHED TO PEDESTAL POLES AND STEEL STRAIN POLES SHALL BE MOUNTED WITH "CLAMSHELL" TYPE BRACKET ASSEMBLIES. ALL PEDESTRIAN SIGNAL HEADS ATTACHED TO CONCRETE STRAIN POLES SHALL BE MOUNTED WITH ONE-WAY SIDE-OF-POLE ALUMINUM BRACKETS. PEDESTRIAN SIGNAL HEADS SHALL BE EQUIPPED WITH COUNTDOWN, UNIFORM APPEARANCE, FULL HAND/MAN/NUMERAL LED MODULES.
19. AUDIBLE PUSHBUTTON STATIONS THAT ARE INSTALLED ON A PEDESTAL POLE FOR TWO PERPENDICULAR CROSSINGS SHALL BE MOUNTED ON A DOUBLE PUSHBUTTON STATION ADAPTER. PEDESTRIAN AUDIBLE PUSHBUTTONS SHALL BE INSTALLED WITHIN 10" OF SIDEWALK WITH SIGN ARROW INDICATING THE CROSSING DIRECTION. PEDESTRIAN AUDIBLE PUSHBUTTONS SHALL BE VANDAL RESISTANT WITH A PIEZO SWITCH, LED INDICATION AND AUDIBLE FEEDBACK.
20. ONLY THE MODELS OF VEHICLE SIGNAL MODULES, PEDESTRIAN SIGNAL MODULES, AND PUSHBUTTONS THAT HAVE BEEN TESTED AND PRE-APPROVED BY CHATHAM COUNTY SHALL BE USED. CONTACT CHATHAM COUNTY FOR A LIST OF APPROVED ITEMS OR TO SUBMIT ITEMS FOR TESTING AND APPROVAL, CONTACT CHATHAM COUNTY AT (912)652-7800.
21. ONE 7-CONDUCTOR, 14 AWG, STRANDED CABLE AND ONE 3-PAIR DETECTOR CABLE FOR PROPOSED AND FUTURE PEDESTRIAN SIGNALS SHALL BE INSTALLED AT EACH STRAIN POLE. A MINIMUM OF ONE 7-CONDUCTOR, 14 AWG, STRANDED SIGNAL CABLE FOR PROPOSED AND FUTURE VEHICLE SIGNALS SHALL BE INSTALLED ON ALL FOUR SIDES OF THE INSTALLATION.
22. LOOP DETECTOR UNIT SHALL ENERGIZE ITS INDIVIDUAL LOOP CHANNELS NONCONCURRENTLY. DETECTOR UNIT SHALL BE FAIL SAFE (PROVIDE A CONSTANT CALL TO THE CONTROLLER IF LOOP FAILURE OCCURS).
23. CONTROLLER SHALL INCLUDE 5-VOLT 2 MB DATA KEY AND SHALL HAVE TACTICS GDOT LICENSE INTERSECTION SOFTWARE INSTALLED AND OPERATIONAL.
24. HOT DIP GALVANIZED WELDLESS RINGS SHALL BE USED FOR SPAN WIRE JUNCTIONS. GUY ANCHORS SHALL BE GALVANIZED.
25. CHATHAM COUNTY WILL BE RESPONSIBLE FOR PROGRAMMING OF SIGNAL TIMING AND "TURN-ON" OF ALL NEW SIGNALS.
26. THE CONTRACTOR SHALL FURNISH, INSTALL AND MAKE OPERATIONAL 4G MODEMS THAT MEET OR EXCEED GDOT STANDARDS. ONE MODEM SHALL BE IN THE NEW CABINET AT BRADLEY POINT ROAD. THE OTHER MODEM SHALL BE INSTALLED IN THE GDOT-SUPPLIED CABINET AT BYRAN WOODS ROAD. ALL COSTS SHALL BE INCLUDED UNDER PAY ITEM NUMBER 926-2500, 4G (LTS) CELLULAR ROUTER, TYPE B.



**Know what's below
Call before you dig**

	GCA		REVISION DATES	DEPARTMENT OF ENGINEERING CHATHAM COUNTY
				GENERAL NOTES
				BRADLEY POINT ROAD PROPOSED SIDEWALK
				DRAWING No. 27-000

EXISTING UTILITIES

- EXISTING GUY WIRE
- EX.OH ELECTRIC
- EX POWER POLE
- EX TRANSFORMER
- EX.UG ELECTRIC
- EX GAS LINE
- EX GAS METER
- EX GAS VALVE
- EX WATER LINE
- EX FIRE HYDRANT
- EX WATER METER
- EX WATER VALVE
- EX SANITARY SEWER
- EX SS MANHOLE
- EX TELEPHONE MH
- EX OH TELEPHONE
- EX UG TELEPHONE
- EX OH CABLE TV
- EX UG CABLE TV

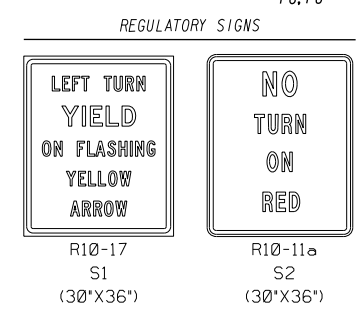
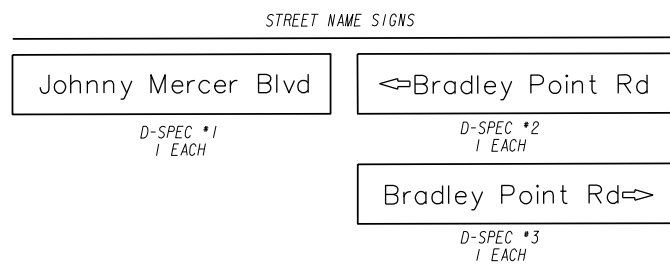
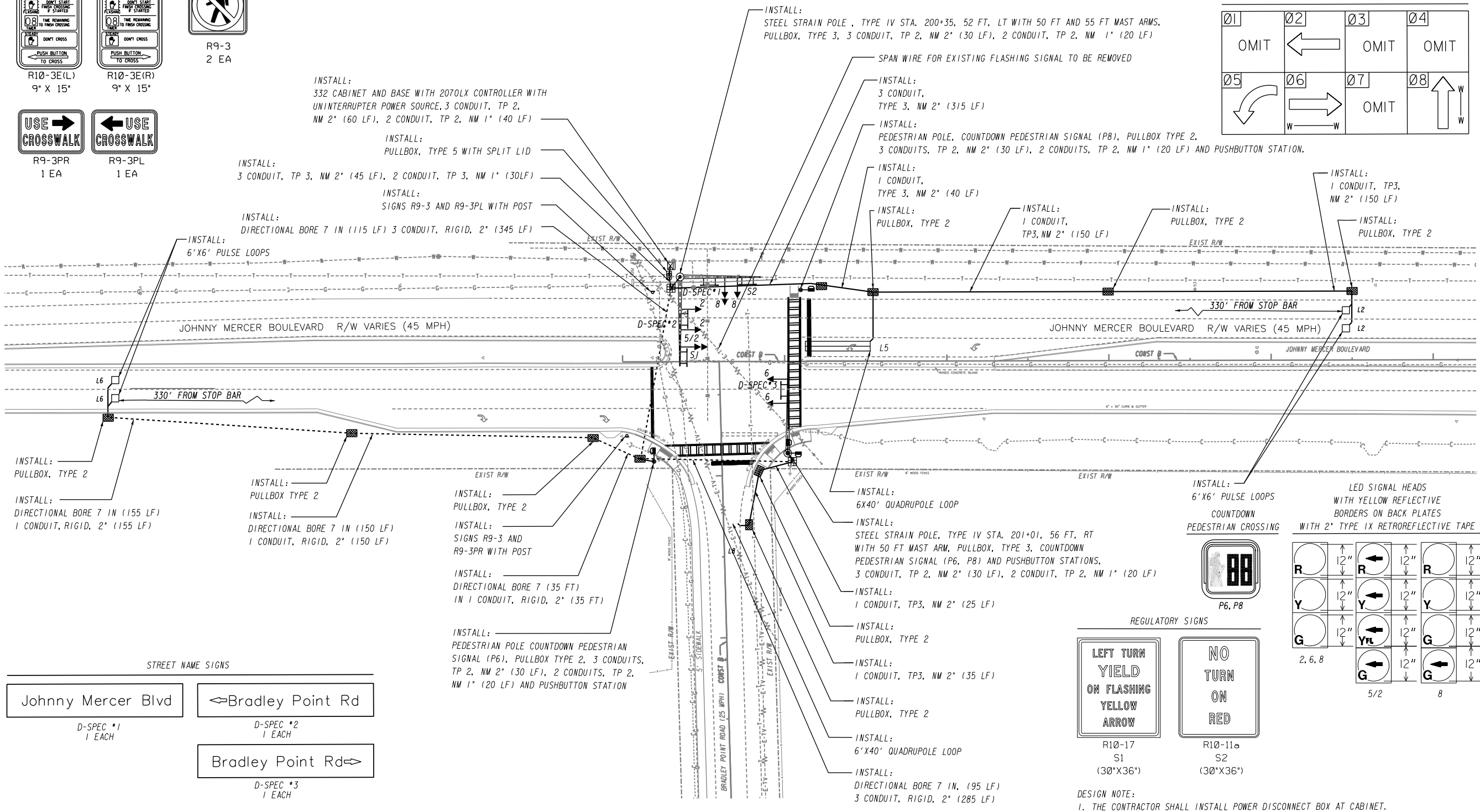
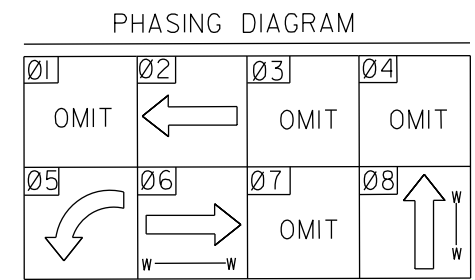
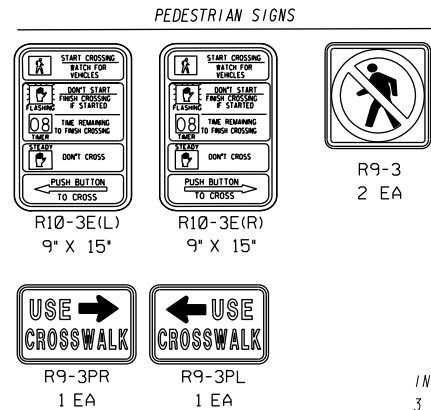
EXISTING SIGNAL

- CONTROLLER CABINET
- STRAIN POLE
- TIMBER POLE
- DOWN GUY
- MAST ARM
- STREET LIGHT
- 3 SECTION HEAD
- 4 SECTION HEAD
- OVERHEAD SIGN
- PEDESTAL POLE
- PED SIGNAL HEAD
- CURB CUT RAMP
- PULLBOX, TP 1
- PULLBOX, TP 2
- PULLBOX, TP 4
- PULLBOX, TP 5
- 6x6 PULSE LOOP
- 6x18 CALL LOOP
- 6x40 PRESENCE LOOP (DIPOLE)
- 6x40 PRESENCE LOOP (QUADRUPOLE)
- CONDUIT
- RAILROAD CONTROLLER
- SIGN POST

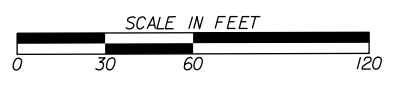
PROPOSED SIGNAL

- CONTROLLER CABINET
- STRAIN POLE
- TIMBER POLE
- DOWN GUY
- MAST ARM
- STREET LIGHT
- 3 SECTION HEAD
- 3 SECTION HEAD W/ BACKPLATE
- 4 SECTION HEAD
- 4 SECTION HEAD W/ BACKPLATE
- OVERHEAD SIGN
- PEDESTAL POLE
- PED SIGNAL HEAD
- CURB CUT RAMP - (See ADA Detail)
- PULLBOX, TP 1
- PULLBOX, TP 2
- PULLBOX, TP 3
- PULLBOX, TP 4
- PULLBOX, TP 5
- 6x6 PULSE LOOP
- 6x18 CALL LOOP
- 6x40 PRESENCE LOOP (DIPOLE)
- 6x40 PRESENCE LOOP (QUADRUPOLE)
- CONDUIT
- RIGID CONDUIT
- RAILROAD CONTROLLER
- SIGN POST

REVISION DATES		



DESIGN NOTE:
1. THE CONTRACTOR SHALL INSTALL POWER DISCONNECT BOX AT CABINET.



REVISION DATES	

DEPARTMENT OF ENGINEERING
CHATHAM COUNTY

OFFICE:

SIGNAL PLANS

BRADLEY POINT ROAD
PROPOSED SIDEWALK

DRAWING No.
27-002

LIST OF MATERIALS PAID FOR AS PART OF 647-1000 LUMP SUM PAY ITEM

MATERIALS	UNIT	QUANTITY
CABINET CONTROLLER ASSEMBLIES		
A. CONTROLLER UNIT, MODEL 2070LX	EA	1
D. CABINET ASSEMBLY, MODEL 332A AUX FILE	EA	1
E. SWITCH PACK	EA	7
F. DC ISOLATOR	EA	3
G. LOOP DETECTOR, 2 CHANNEL	EA	4
J. 2010 ECLIP MONITOR (ETHERNET CAPABLE)	EA	1
K. UNINTERRUPTABLE POWER SOURCE	EA	1
BATTERY BACKUP SYSTEM - EXTERNAL MOUNTED, CABINET (PER GDOT SPECS)		
LOOP DETECTION WIRE (14 AWG STRANDED/1000 FT)	REEL	2
LOOP/PEL LEAD-IN WIRE (SHIELDED, TWISTED/1000 FT) A. 3 PAIR, 14 AWG	REEL	1
SIGNAL CABLE (14 AWG) B. 7 CONDUCTOR, PER 1000 FT.	REEL	2
SIGNAL CABLE (14 AWG) C. 10 CONDUCTOR, PER 1000 FT.	REEL	2
ONE-WAY, 3-SECTION, 12" LED SIGNAL HEAD, ALUMINUM NON-PIXALATED	EA	5
ONE-WAY 4-SECTION 12" LED SIGNAL HEAD, ALUMINUM NON-PIXALATED (FYA)	EA	1
ONE-WAY 4-SECTION 12" LED SIGNAL HEAD, ALUMINUM NON-PIXALATED (GREEN BALL)	EA	1
BACKPLATE WITH REFLECTIVE TYPE IX TAPE FOR ONE-WAY, 3-SECTION, 12" SIGNAL HEAD	EA	5
BACKPLATE WITH REFLECTIVE TYPE IX TAPE FOR ONE-WAY, 4-SECTION, 12" SIGNAL HEAD	EA	2
TWO-WAY, MOUNTING, CLAMHELL, 1-SECTION, 18" LED COUNTDOWN PEDESTRIAN SIGNAL HEAD, FULL HAND/MAN OVERLAP. I. 9" HIGH, NUMBERS	EA	4
HARDWARE FOR PEDESTRIAN POLE TOP POST MOUNTING, ONE WAY BRACKET ASSEMBLY	EA	2
HARDWARE FOR SIDE OF POLE MOUNTING, TWO-WAY BRACKET ASSEMBLY, CONCRETE, TIMBER, STEEL POLE	EA	1
PEDESTAL POLE, 10FT	EA	2
HARDWARE FOR MAST ARM MOUNTING	EA	6
LOOP SAW CUT	LF	1700
CONDUIT, 1" PVC TYPE 2	LF	100
CONDUIT, 2" PVC TYPE 2	LF	160
SI, RIO-17, LEFT TURN YIELD ON YELLOW ARROW	EA	1
S2, RIO-11a, NO TURN ON RED	EA	1
R9-3, NO PEDESTRIAN	EA	2
R9-3BR, USE CROSSWALK (RIGHT)	EA	1
R9-3BL, USE CROSSWALK (LEFT)	EA	1
MISC MATL TO COMPLETE INSTALLATION	LUMP	LUMP

PAY ITEMS FOR TRAFFIC SIGNAL INSTALLATION NO. 1

ITEM	DESCRIPTION	UNIT	QUANTITY
647-1000	TRAFFIC SIGNAL INSTALLATION NO. 1	LUMP	LUMP
647-2120	PULLBOX TYPE 2	EA	9
647-2130	PULLBOX TYPE 3	EA	2
647-2150	PULLBOX TYPE 5	EA	1
647-6086	AUDIBLE PUSHBUTTON STATION, 9" X 15", RIO-3E, (LEFT OR (RIGHT), COUNTDOWN WITH TYPE IX RETROREFLECTIVE SHEETING.	EA	4
636-1041	HIGHWAY SIGNS, TP2 MATL, REFL SHEETING TP9	SF	60
639-3004	STEEL STRAIN POLE, TP IV INCLUDING 55FT AND 50FT MAST ARMS	EA	1
639-3004	STEEL STRAIN POLE, TP IV INCLUDING 50FT MAST ARM	EA	1
682-6120	CONDUIT, RIGID, 2 IN	LF	970
682-6230	CONDUIT, NONMETAL, TP 3, 1IN	LF	150
682-6233	CONDUIT, NONMETAL, TP 3, 2 IN	LF	625
682-9950	DIRECTION BORE, 7IN	LF	550
687-1000	TRAFFIC SIGNAL TIMING	LUMP	LUMP
926-2500	4G (LTE) CELLULAR ROUTER, TYPE B	EA	2

SLOT	1	2	3	4	5	6	7	8	9	10	11	12	13	14
------	---	---	---	---	---	---	---	---	---	----	----	----	----	----

UPPER INPUT FILE

	TYPE	DET	DET	DET	DET	DET	DET	DET	DET	DET	TBA	TBA	DC	DC	DC
	CARD	2 CH	2 CH					2 CH					DC ISO	DC ISO	DC ISO
CHANNEL 1	CI PIN	56	39	63	47	58	41	65	49	60		80	67	68	81
	FUNCTION		02A											P6	FLASH
	FIELD TERM	TB2 1,2	TB2 5,6	TB2 9,10	TB4 1,2	TB4 5,6	TB4 9,10	TB6 1,2	TB6 5,6	TB6 9,10			TB8 4,6	TB8 7,9	N/C
TRA/SEPAC	DETECTOR	1	3	5	7		11	13	15	17					
TRA/SEPAC	ASSIGNED	1	2	2	2		4	4	4	1					

	TYPE	DET	DET	DET	DET	DET	DET	DET	DET	DET	TBA	TBA	DC	DC	DC
	CARD	2 CH	2 CH					2 CH							
CHANNEL 2	CI PIN	56	43	76	47	58	45	78	49	62		53	69	70	82
	FUNCTION		02B											P8	STOP TIME
	FIELD TERM	TB2 3,4	TB2 7,8	TB2 11,12	TB4 3,4	TB4 7,8	TB4 11,12	TB6 3,4	TB6 7,8	TB6 11,12			TB8 5,6	TB8 8,9	N/C
TRA/SEPAC	DETECTOR	1	4	6	7		12	14	15	18					
TRA/SEPAC	ASSIGNED	1	2	2	2		4	4	4	7					

LOWER INPUT FILE

	TYPE	DET	DET	DET	DET	DET	DET	DET	DET	DET	TBA	TBA	DC	DC	DC
	CARD	2 CH	2 CH					2 CH							
CHANNEL 1	CI PIN	55	40	64	48	57	42	66	50	59		54	71	72	51
	FUNCTION	05	06A				08								
	FIELD TERM	TB3 1,2	TB3 5,6	TB3 9,10	TB5 1,2	TB5 5,6	TB5 9,10	TB7 1,2	TB7 5,6	TB7 9,10			TB9 4,6	TB9 7,9	TB9 10,12
TRA/SEPAC	DETECTOR	19	21	23	25		31	33	35	37					
TRA/SEPAC	ASSIGNED	5	6	6	6		8	8	8	5					

	TYPE	DET	DET	DET	DET	DET	DET	DET	DET	DET	TBA	TBA	DC	DC	DC
	CARD	2 CH	2 CH					2 CH							
CHANNEL 2	CI PIN	55	44	77	48	57	46	79	50	61		75	73	74	52
	FUNCTION		06B												
	FIELD TERM	TB3 3,4	TB3 7,8	TB3 11,12	TB5 3,4	TB5 7,8	TB5 11,12	TB7 3,4	TB7 7,8	TB7 11,12			TB9 5,6	TB9 8,9	TB9 11,12
TRA/SEPAC	DETECTOR	19	22	24	25		32	34	35	38					
TRA/SEPAC	ASSIGNED	5	6	6	6		8	8	8	3					

NOTE:

MATERIALS LISTED FOR SIGNAL INSTALLATION ARE FOR INFORMATIONAL PURPOSES ONLY. THE CONTRACTOR SHALL DETERMINE THE MATERIALS AND QUANTITIES REQUIRED FOR THE COMPLETE AND ACCEPTED INSTALLATION.



REVISION DATES

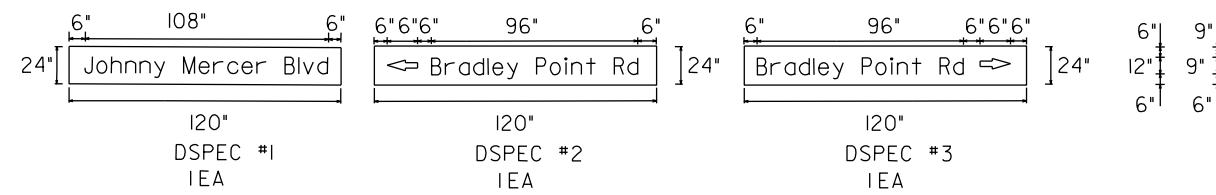
DEPARTMENT OF ENGINEERING
CHATHAM COUNTY

SIGNAL PLANS

BRADLEY POINT ROAD
PROPOSED SIDEWALK

DRAWING No.
27-003

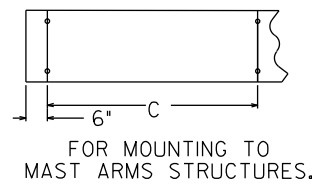
DETAILS OF OVERHEAD STREET NAME SIGNS



SUMMARY OF QUANTITIES

LOCATION	SIGNS - TYPE 2 MAT'L (.10) REFLECTIVE SHEETING TYPE 11			
	CODE	SIZE	QUAN.	SQ. FT.
INSTALLATION NO.1	D-SPEC #1	120"X24"	1	20.00
	D-SPEC #2	120"X24"	1	20.00
	D-SPEC #3	120"X24"	1	20.00
Total			3	60.00

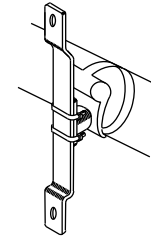
MOUNTING DIMENSIONS			
H	A	B	C
12"	9"	1 1/2"	36"
18"	15"	1 1/2"	24"
24"	18"	1 1/2"	18"
30"	24"	3"	12"



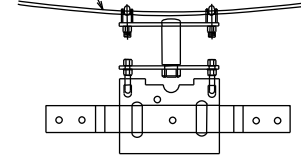
FOR MOUNTING TO
MAST ARMS STRUCTURES.

(NOT TO SCALE)

NOTE: USE ASTRO MINISIGN BRAC
AND CLAMP OR EQUIVALENT



3/8 IN. MIN. SPAN WIRE

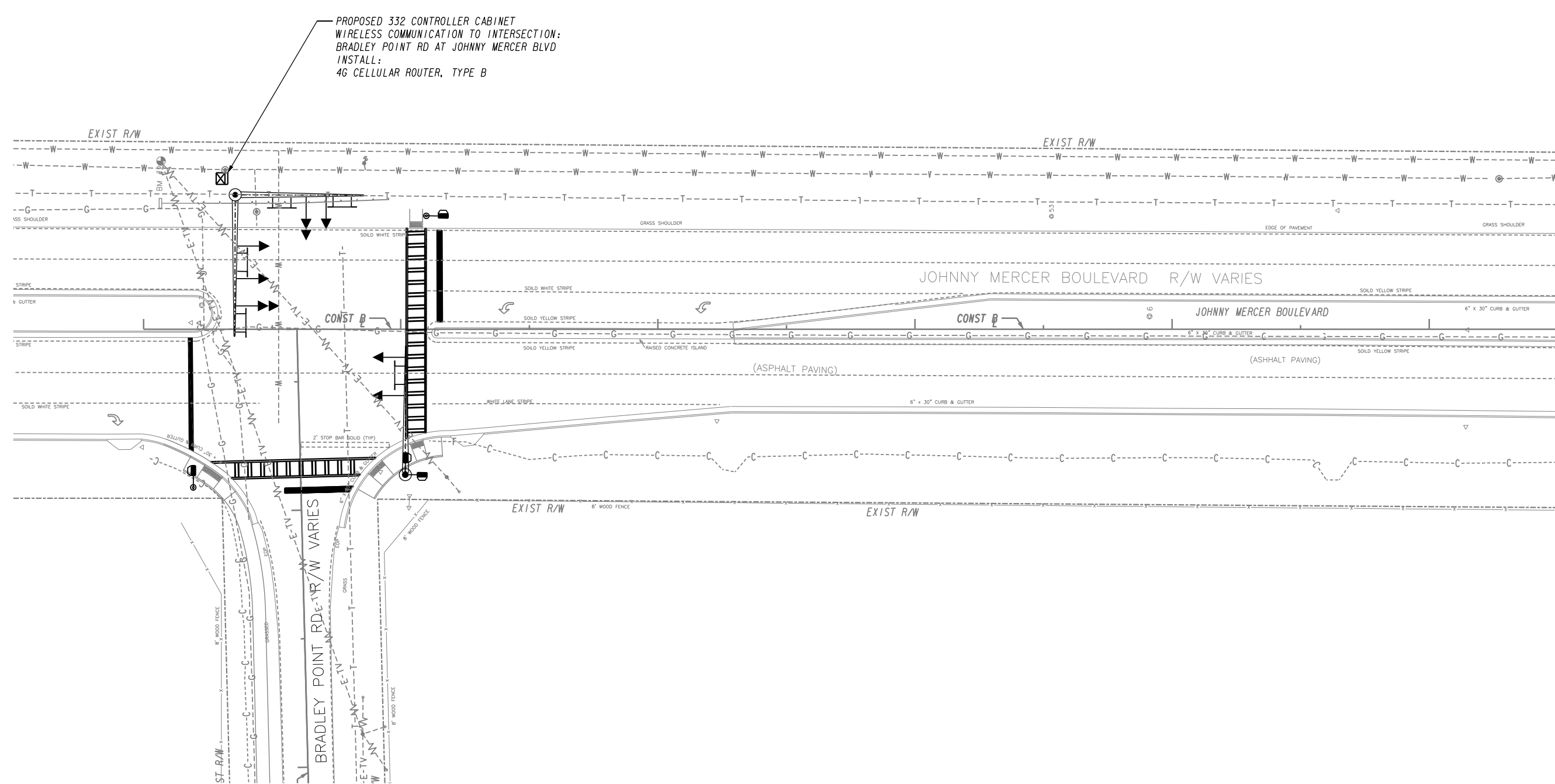


MULTI-LEVELING
WIND DUMPING
BRACKET

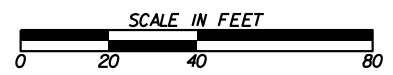
(NOT TO SCALE)

GENERAL NOTES:

1. EACH SIGN SHALL CONTAIN A MINIMUM OF TWO (2) HANGERS OR BRACKETS.
2. SIGN LEGEND SHALL BE 12-IN. UPPER CASE & 69-IN. LOWER CASE SERIES "D" LETTERS
ALL ARROWS SHALL BE 6-IN. TALL & 9-IN. LONG
3. EACH SIGN SHALL CONTAIN 1/2-IN BORDERS AND 1 1/2-IN RADII.
4. EACH SIGN SHALL BE MADE OF ONE CONTINUOUS PIECE OF ALUMINUM.
5. SIGNS SHALL HAVE STANDARD REFLECTORIZED INTERSTATE GREEN BACKGROUND
WITH WHITE REFLECTORIZED LEGENDS, BORDERS AND ARROWS.



MATCHLINE STA. 205+50 SHEET 28-002



REVISION DATES

NO.	DATE	DESCRIPTION

DEPARTMENT OF ENGINEERING
CHATHAM COUNTY

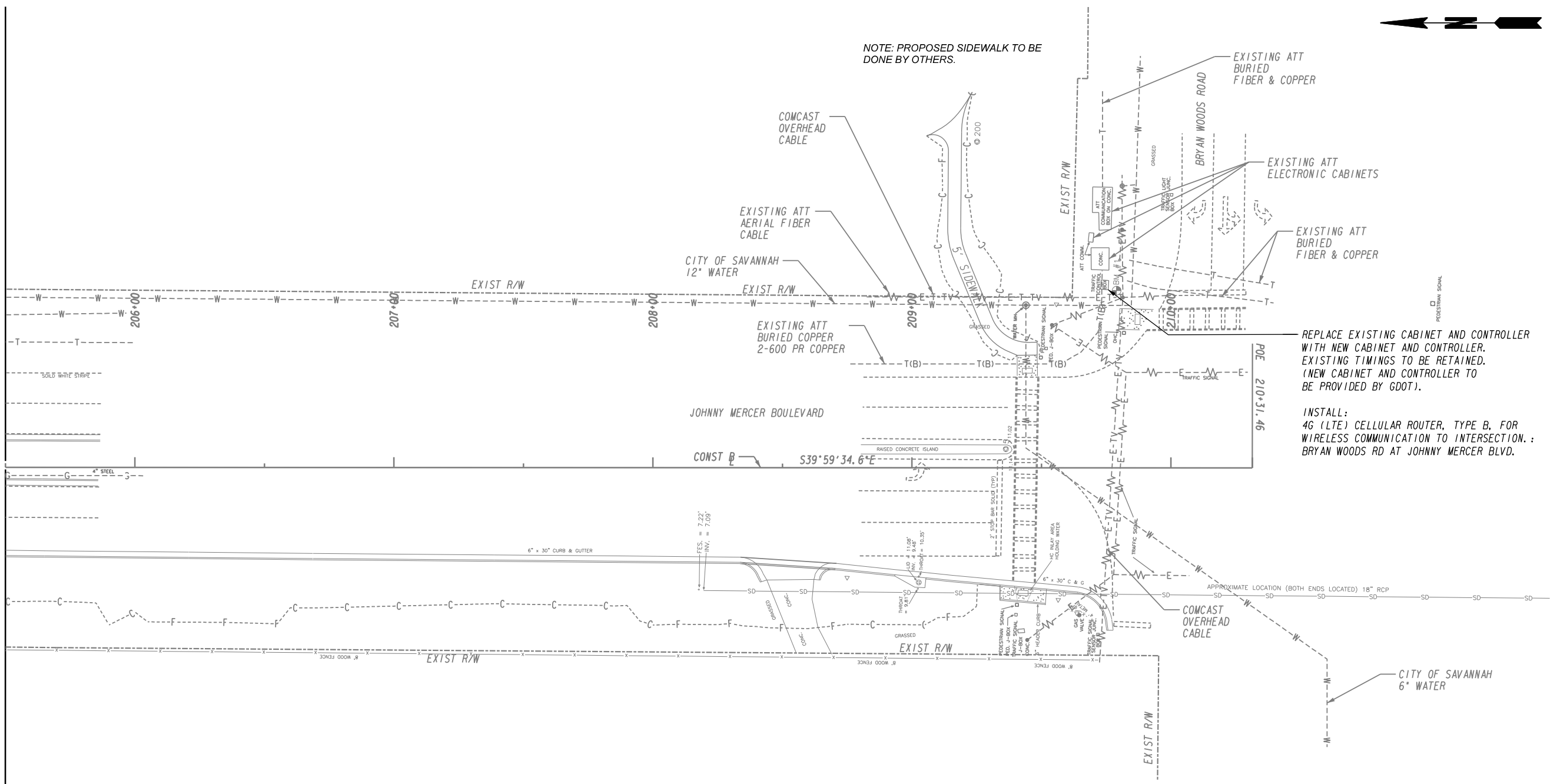
OFFICE:
ITS PLANS

BRADLEY POINT ROAD
PROPOSED SIDEWALK

DRAWING No.
28-001



MATCHLINE STA. 205-50 NO. ITS-001

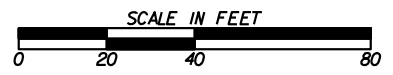


NOTE: PROPOSED SIDEWALK TO BE DONE BY OTHERS.

REPLACE EXISTING CABINET AND CONTROLLER WITH NEW CABINET AND CONTROLLER. EXISTING TIMINGS TO BE RETAINED. (NEW CABINET AND CONTROLLER TO BE PROVIDED BY GDOT).

INSTALL:
4G (LTE) CELLULAR ROUTER, TYPE B, FOR WIRELESS COMMUNICATION TO INTERSECTION. : BRYAN WOODS RD AT JOHNNY MERCER BLVD.

- NOTE:
1. THE CONTRACTOR SHALL VERIFY CONFLICTS WITH UTILITIES OR WITH THE UNDERGROUND FIBER OPTIC CABLE FOR AREAS WHERE UTILITY DETAIL IS NOT PROVIDED.
 2. THE CONTRACTOR SHALL CONFIRM THAT THE NEW CABINET AND CONTROLLER CAN BE INSTALLED ON THE EXISTING FOUNDATION AND WIRING.



REVISION DATES	

DEPARTMENT OF ENGINEERING
CHATHAM COUNTY

OFFICE:
ITS PLANS

BRADLEY POINT ROAD
PROPOSED SIDEWALK

DRAWING No.
28-002