

CHATHAM COUNTY PURCHASING DEPARTMENT

ADDENDUM NO. 1 TO BID #18-0086-5

FOR: FURNITURE FOR THE CHATHAM COUNTY SHERIFF'S OFFICE K9 BUILDING

PLEASE SEE THE FOLLOWING ADDITIONS, CLARIFICATIONS AND/OR CHANGES:


1. **Question:** Is there a floor plan?
Response: Please see attached floor plan.

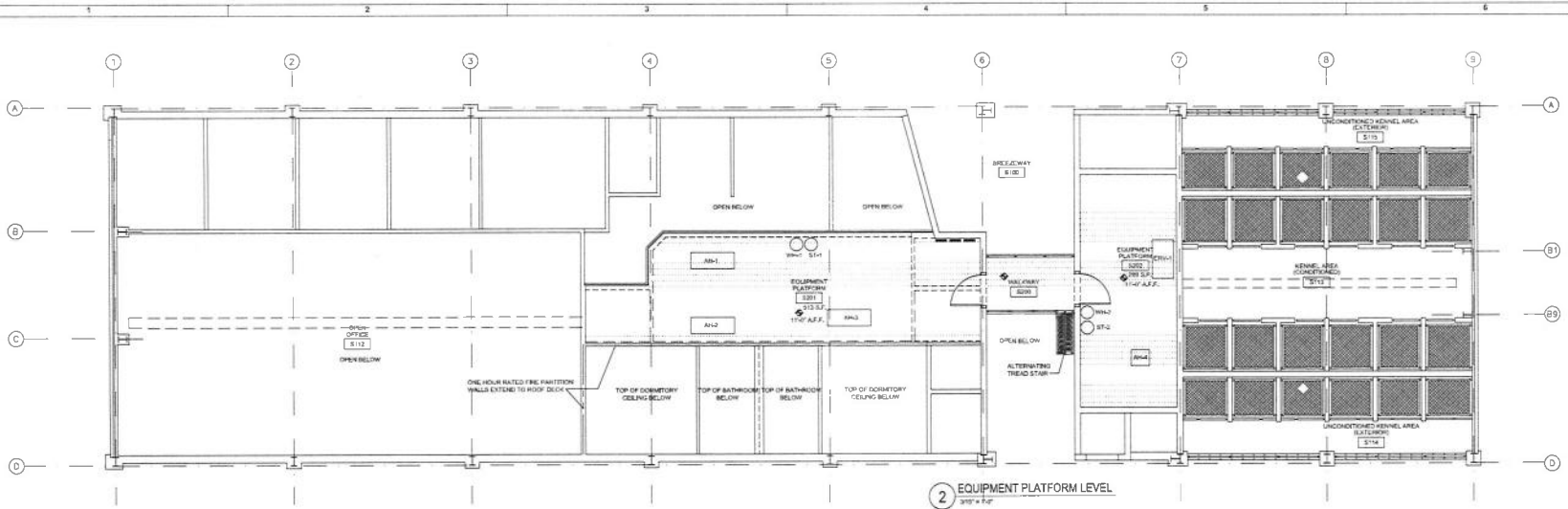
BID DUE DATE WILL REMAIN 2:00PM, AUGUST 7, 2018

BIDDER IS RESPONSIBLE FOR MAKING THE NECESSARY CHANGES.

July 31, 2018

DATE


MARGARET H. JOYNER
PURCHASING DIRECTOR
CHATHAM COUNTY



2 EQUIPMENT PLATFORM LEVEL
318' x 74'

BUILDING INFORMATION

(BASED ON IRC & LBC 2015)

BUILDING OWNER:
COMMISSIONERS OF CHATHAM COUNTY

LOCATION:
CHATHAM COUNTY SHERIFFS COMPLEX, 100 CARL GRIFFIN DR, SAVANNAH, GA 31405

ASIS:

1. **CONDITIONED ADMINISTRATION & DONATORIES:**
KITCHEN AREA: 3,000 S.F.
OFFICE AREA: 4,000 S.F.
TOTAL FIRST LEVEL: 7,000 S.F.

2. **STRUCTURE:**
PRE-CAST/CONCRETE METAL FRAMING OVER CONCRETE FOUNDATION & SLAB. BUREAU OF FIRE PREVENTION (BFP) (TRANSIENT IN NA URB WITH 10+ FEWER OCCUPANTS)

3. **OCCUPANCY:**
RESIDENTIAL

4. **TYPE OF CONSTRUCTION:**
TYPE V-B

5. **ALLOWABLE FLOOR AREA:**
9,000 S.F. (TABLE 503)

6. **ALLOWABLE HEIGHT:**
3 STORIES 4' 0"

7. **SPRINKLERS:**
YES

8. **OCCUPANCY SEPARATION:**
ONE HOUR BETWEEN 0' & 10' IN SEPARATE WALKING (TABLE 504)

9. **TRAVEL DISTANCE MEASUREMENT (BASED ON 10' UNBARRICADED OCCUPANCY):**
-TRAVEL DISTANCE LIMIT: 300'-0"
-HEAD END LIMIT: 30'-0"
-COMMON PATH LIMIT: 10'-0"

10. **NUMBER OF GATES:**
2 EXITS

EGRESS & OCCUPANCY INFORMATION

(BASED ON LBC 2015)

11. **OCCUPANCY TOTALS:**

BUSINESS	= 34 OCCUPANTS
BUSINESS A	= 4 OCCUPANTS
BUSINESS B	= 4 OCCUPANTS
BUSINESS C	= 4 OCCUPANTS
BUSINESS D	= 4 OCCUPANTS
BUSINESS E	= 4 OCCUPANTS
BUSINESS F	= 4 OCCUPANTS
BUSINESS G	= 4 OCCUPANTS
BUSINESS H	= 4 OCCUPANTS
BUSINESS I	= 4 OCCUPANTS
BUSINESS J	= 4 OCCUPANTS
BUSINESS K	= 4 OCCUPANTS
BUSINESS L	= 4 OCCUPANTS
BUSINESS M	= 4 OCCUPANTS
BUSINESS N	= 4 OCCUPANTS
BUSINESS O	= 4 OCCUPANTS
BUSINESS P	= 4 OCCUPANTS
BUSINESS Q	= 4 OCCUPANTS
BUSINESS R	= 4 OCCUPANTS
BUSINESS S	= 4 OCCUPANTS
BUSINESS T	= 4 OCCUPANTS
BUSINESS U	= 4 OCCUPANTS
BUSINESS V	= 4 OCCUPANTS
BUSINESS W	= 4 OCCUPANTS
BUSINESS X	= 4 OCCUPANTS
BUSINESS Y	= 4 OCCUPANTS
BUSINESS Z	= 4 OCCUPANTS
TOTAL OCCUPANCY TOTAL:	82 OCCUPANTS

12. **REQUIRED EXIT WIDTH:**

FOR ADMINISTRATION & DONORIES	MINIMUM PROVIDED (2' x 24" CLEAR DOOR OPENINGS) = 87'-3" = 340 OCCUPANTS + 38
FOR FOOD PREP & WASH AREA	MINIMUM PROVIDED (2' x 24" CLEAR DOOR OPENINGS) = 87'-3" = 40 OCCUPANTS + 4

13. **EGRESS CAPACITY:**

EGRESS CAPACITY	170
DIRECTION OF EGRESS EXIT	SEE EGRESS FROM MEETING
EGRESS FROM MEETING	SEE EGRESS FROM MEETING
CAPACITY FACTORS:	LEVEL EGRESS: 2' BATHROOM

OCCUPANCY LEGEND

BUSINESS

RESIDENTIAL DORMITORIES

RATED PARTITION LEGEND:

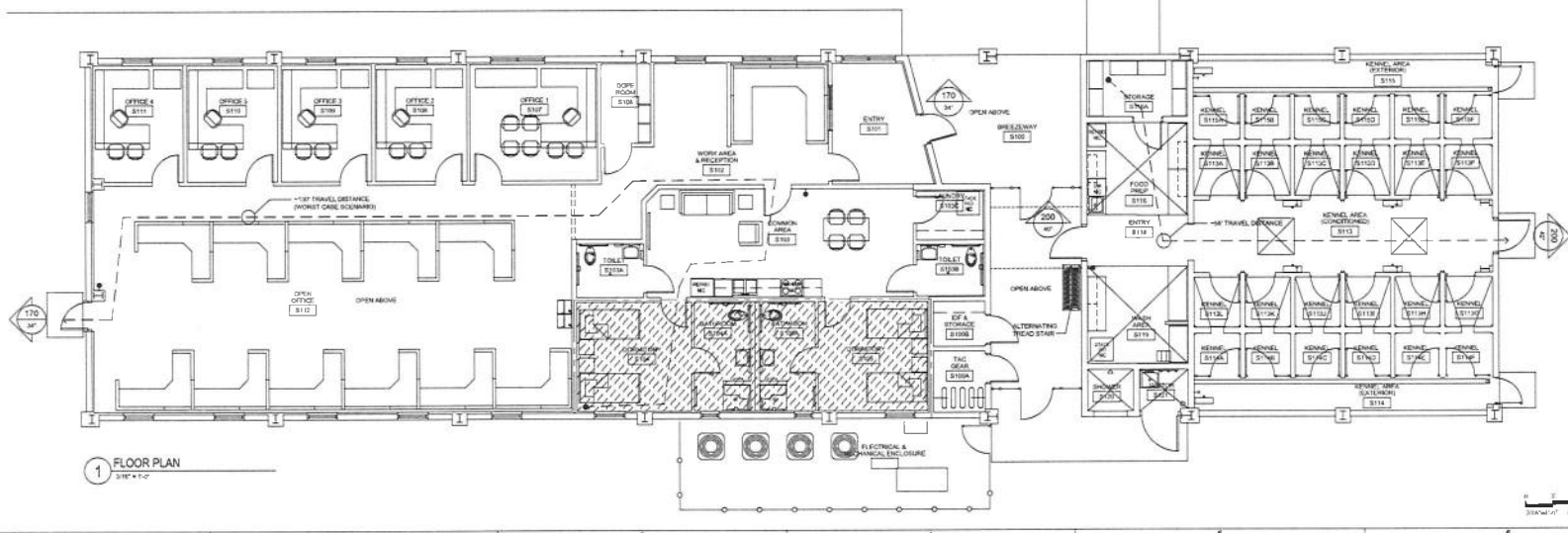
--- ONE HOUR RATED OCCUPANCY SEPARATION

FIRE SPRINKLER NOTE:

(BUILDINGS WILL BE SPRINKLERED)

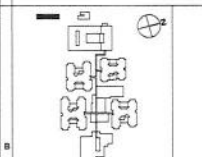
FIRE STOPPING NOTE:

FIRE WATERWALL PENETRATIONS SHALL BE PROTECTED TO MEET ALL APPLICABLE RATED WALL RATING, SEE SPECIFICATIONS.



1 FLOOR PLAN
318' x 74'

PROFESSIONAL



KEY PLAN

MARK	DATE	DESCRIPTION
ISSUE:	10/4/2016	
PROJECT NO.:	14-2200-0273	
CAD DWG FILE:		
DRAWN BY:	RJP	
CHECKED BY:		
© CDI Infrastructure, LLC dba: L.R. Kimball		

SHEET TITLE
COMPONENT 3 - K9
LIFE SAFETY
PLAN & LEGENDS

A3.001

BID DOCUMENTS

