

LEGEND & ABBREVIATIONS		
ABBREVIATION	SYMBOL	DESCRIPTION
HWS	HWS	HOT WATER SUPPLY
HWR	HWR	HOT WATER RETURN
MBV	MBV	METERED BALANCING VALVE
GV	GV	GATE VALVE
CV	CV	CHECK VALVE
CHS	CHS	CHILLED WATER SUPPLY
CHR	CHR	CHILLED WATER RETURN
MOV	MOV	MOTOR OPERATED (2-WAY) VALVE
		STRAINER
		UNION
FD	FD	FIRE DAMPER
		SINGLE LINE DUCT
		FLEXIBLE DUCT
		DUCT TRANSITION
		ROUND
		PIPE UP
		PIPE OR DUCT DOWN
		DIRECTION OF FLOW
MLD/MD	MLD/MD	MANUAL DAMPER
T-STAT	T-STAT	THERMOSTAT
MOD	MOD	MOTOR OPERATED DAMPER
SKD	SKD	DUCT MOUNTED SMOKE DETECTOR
SMD	SMD	SMOKE DETECTOR
		TEMPERATURE SENSOR
CS	CS	CONDENSER WATER SUPPLY
CR	CR	CONDENSER WATER RETURN

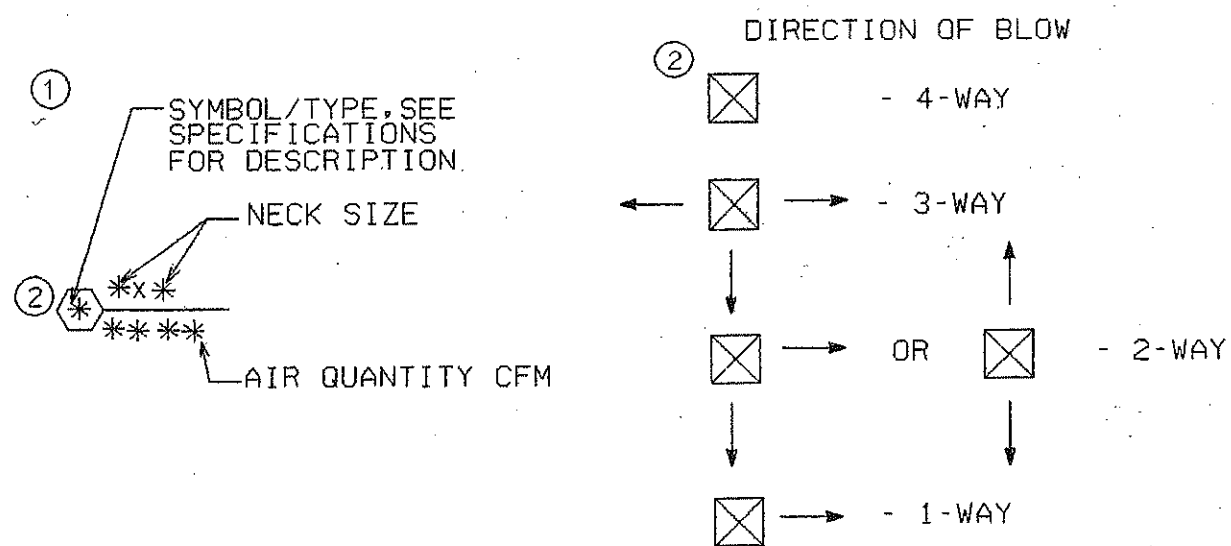
ABBREVIATION	DESCRIPTION
AFF	ABOVE FINISHED FLOOR
A/C	ABOVE CEILING
AHU	AIR HANDLING UNIT
AD	DUCT ACCESS DOOR
BTUH	BRITISH THERMAL UNITS PER HOUR
CFM	CUBIC FEET PER MINUTE
CLG	CEILING
DN	DOWN
DWGS	DRAWINGS
EA	EXHAUST AIR DUCT (EXISTING)
EF	EXHAUST FAN
ELEC	ELECTRIC
EXH	EXHAUST
EXIST	EXISTING
GPM	GALLONS PER MINUTE
HVAC	HEATING VENTILATING & AIR CONDITIONING
MAX	MAXIMUM
MIN	MINIMUM
TG	TRANSFER GRILLE
TYP	TYPICAL
VAV	VARIABLE AIR VOLUME UNIT
CTE	CONNECT TO EXISTING
RA	RETURN AIR
OA	OUTSIDE AIR
SA	SUPPLY AIR
LVG	LEAVING
ENT	ENTERING
TEMP	TEMPERATURE
PRESS	PRESSURE
SF	SUPPLY FAN
DP	DIFFERENTIAL PRESSURE
EMS	ENERGY MANAGEMENT SYSTEM
CT	COOLING TOWER
CH	CHILLER
CHP	CHILLED WATER PUMP
CWP	CONDENSER WATER PUMP
HWP	HOT WATER PUMP
B	BOILER

DESIGN CONDITIONS		INSIDE				OUTSIDE			
UNIT	AREA	HEAT.		COOLING		HEAT.		COOLING	
		DB	F	DB	F	WB	F	DB	F
ALL	ALL	72		75		62		24	
						95		79	

GENERAL NOTES:

- COORDINATE ALL WORK WITH OTHER TRADES PRIOR TO INSTALLATION.
- UNLESS OTHERWISE INDICATED, INSTALL ALL SPACE THERMOSTATS, HUMIDISTATS AND SENSORS 54 INCHES ABOVE FINISHED FLOOR.
- DUCT SIZES SHOWN ARE ACTUAL INSIDE DIMENSIONS.
- FLEXIBLE OR ROUND DUCT SHALL BE CONNECTED TO RECTANGULAR OR SQUARE DUCT WITH A SPIN-IN COLLAR WITH SCOOP AND DAMPER.
- INSTALL TURNING VANES IN ALL 45 AND 90 DEGREE MITERED ELBOWS.
- ALL WORK SHALL BE DONE AFTER HOURS. ALL SHUT DOWNS TO BE COORDINATED WITH USER. ALL MATERIAL REMOVED SHALL BE TAKEN FROM BUILDING AND PROPERLY DISPOSED OF EACH DAY. NO TRASH OR OTHER MATERIALS REMOVED SHALL REMAIN IN AREA UNLESS MATERIAL IS TO BE REUSED.

AIR DISTRIBUTION DEVICES				
SYMBOL	LOCATION	FUNCTION	TYPE	SURFACE TYPE
A	CEILING	SUPPLY	PERFORATED REGISTER	LAY-IN
B	CEILING	RETURN	PERFORATED REGISTER	LAY-IN
C	CEILING	EXHAUST	LOUVERED FACE	SURFACE MNT
D	CEILING	SUPPLY	LOUVERED FACE	SURFACE MNT
E	CEILING	EXISTING	EXISTING	EXISTING



AIR HANDLING UNITS				
SYMBOL	AHU-1	AHU-2	AHU-3	AHU-4
TYPE	EXISTING	EXISTING	EXISTING	NEW
TOTAL CFM	42,000	36,400	43,000	41,000
MINIMUM CFM	23,295	0	19,505	19,890
MINIMUM OUTSIDE AIR, CFM	12,980	0	7820	10,580
EXT. STATIC PRESSURE, IN. H <sub>2</sub> O	4.0	4.0	5.0	S-6.0/R-1.0
MAX. FAN MOTOR HP	75	50		S-75/R-20
COOLING COIL	CAPACITY, BTU/HR	2,100,000	---	1,615,900
	ENT. AIR DB, °F	80.6	---	78.3
	ENT. AIR WB, °F	68.0	---	65.9
	LVG. AIR DB, °F	53.0	---	54.0
	LVG. AIR WB, °F	52.8	---	53.8
	MAX AIR PRESSURE DROP, IN. H <sub>2</sub> O	1	---	1
	MAX. FACE VELOCITY, FPM	600	---	600
	CHILLED WATER, GPM	350	---	275
	ENTERING WATER TEMP., °F	50	---	50
	LEAVING WATER TEMP., °F	62	---	62
HEATING COIL	MAX WATER PRESS. DROP, FT. H <sub>2</sub> O	10	---	10
	CAPACITY, BTU/HR	---	2,083,600	---
	ENT. AIR DB, °F	---	75	---
	LVG. AIR DB, °F	---	125	---
	MAX AIR PRESSURE DROP, IN. H <sub>2</sub> O	---	1	---
	MAX. FACE VELOCITY, FPM	---	600	---
	HOT WATER, GPM	---	100	---
	ENTERING WATER TEMPERATURE, °F	---	156	---
	LEAVING WATER TEMPERATURE, °F	---	115	---
	MAX WATER PRESS. DROP, FT. H <sub>2</sub> O	---	10	---
LOCATION	BASEMENT	BASEMENT	ROOF	ROOF
ELECTRICAL CHARACTERISTICS	SEE ELEC. DWGS	SEE ELEC. DWGS	SEE ELEC. DWGS	SEE ELEC. DWGS
REMARKS	①	②⑥	③	④

- EXISTING UNIT TO BE REBALANCED TO NEW CAPACITY SHOWN.
- EXISTING UNIT TO BE REBALANCED TO NEW CAPACITY SHOWN. REPLACE MOTOR AND REPLACE FILTER SECTION TO ANGLED FILTERS.
- EXISTING UNIT TO BE REBALANCED TO NEW CAPACITY SHOWN. REPLACE MOTOR.
- NEW UNIT.
- SUPPLY/RETURN
- ADD INLET GUIDE VANES AS REQUIRED TO VARY AIR FLOW

COMPUTER ROOM UNITS		
SYMBOL	CRU-1	CRU-2
TYPE	AIR COOLED	AIR COOLED
TOTAL CFM	5650	5650
EXT. STATIC PRESSURE, IN. H <sub>2</sub> O	0.5	0.5
MAX. FAN MOTOR HP	① 2.0	① 2.0
COOLING	TOTAL CAPACITY, BTU/HR	120,100
	SENS. CAPACITY, BTU/HR	109,500
	ENT. AIR DB, °F	72
	ENT. AIR WB, °F	60
	COND. AMBIENT TEMPERATURE, °F	95
REHEAT	CAPACITY, BTU/HR	56,300
	STAGES	3
HUMIDIFIER	CAPACITY, LB/HR	17.4
	KW	6.4
LOCATION	COMPUTER ROOM	COMPUTER ROOM
ELECTRICAL CHARACTERISTICS	SEE ELEC. DWGS.	SEE ELEC. DWGS.
REMARKS		

① 2 FANS EACH 2.0 HP

FANS - SUPPLY OR EXHAUST						
SYMBOL	EF-1	EF-5	SF-2	SF-3	EF-6	EF-7
TYPE	A	C	C	C	C	C
CFM	9120	425	12,980	7820	1025	400
EXT. STATIC PRESS., IN. H <sub>2</sub> O	1.25	0.5	0.375	0.375	0.5	0.5
MAX. SONES	---	9.0	18.8	14.4	7.5	9.0
MAX. FAN SPEED, RPM	---	---	---	---	---	---
MAX. TIP SPEED, FPM	---	---	---	---	---	---
MAX. OUTLET VELOCITY, FPM	---	---	---	---	---	---
MAX. MOTOR HP	5	1/4	3	1-1/2	1/4	1/4
DRIVE	BELT	BELT	BELT	BELT	BELT	BELT
LOCATION	ROOF	SECOND FLR	BASEMENT	ROOF	FOURTH FLR	FIFTH FL
ELECTRICAL CHARACTERISTICS	SEE ELEC. DWG	SEE ELEC. DWG	SEE ELEC. DWG	SEE ELEC. DWG	SEE ELEC. DWG	SEE ELEC. DWG
REMARKS						

ROSSER

Rosser International, Inc.

Architects and Engineers  
Atlanta, Savannah, Houston, Los Angeles  
128 West Bay St.  
Savannah, Ga. 31402  
(912) 232-1146

This drawing and all prints of it are the property of Rosser International. Prints are to be returned to Rosser upon completion of the project. No reproduction of this drawing or any part thereof may be made without the written consent of Rosser. Rosser is not responsible for any errors or omissions in this drawing or any part thereof. Rosser is not responsible for any damage to property or persons caused by the use of this drawing or any part thereof.

Stamp

THIS DOCUMENT ORIGINALLY ISSUED AND SEALED BY CHARLES A. HANNING (NAME OF SEALER) P.E. NO. 16063 ON 03/29/99 (DATE OF SEALING). THIS MEDIA SHOULD NOT BE CONSIDERED A CERTIFIED DOCUMENT

Revisions

No.	Date	Description
1	12/13/99	GENERAL REVISION
2	03/08/00	GENERAL REVISION
3	12/20/00	COMPUTER ROOM UNITS
4	03/13/01	COIL CHANGE

Chatham County Courthouse  
Savannah, Georgia

Key Plan

Sheet Title

SCHEDULES

Job NO. 98132  
Drawn SMC  
Checked CAH  
Date 26-JUL-2001

Sheet No. M0.1

AS BUILT

1 INCH

E:\CC\_COURT.98132\M0.1.DGN

VARIABLE AIR VOLUME BOXES

SYMBOL	VAV-1	VAV-2	VAV-3	VAV-4	VAV-5	VAV-6	VAV-7	VAV-8	VAV-9	VAV-10	VAV-11	VAV-12	VAV-13	VAV-14	VAV-15	VAV-16	VAV-17	VAV-18
TYPE	DUAL DUCT	DUAL DUCT	DUAL DUCT	DUAL DUCT	DUAL DUCT	DUAL DUCT	DUAL DUCT	DUAL DUCT	DUAL DUCT	DUAL DUCT	DUAL DUCT	DUAL DUCT	DUAL DUCT	DUAL DUCT	DUAL DUCT	DUAL DUCT	DUAL DUCT	DUAL DUCT
MAXIMUM COOLING CFM	530	520	130	235	1650	250	605	700	320	365	685	465	880	60	570	320	2340	365
MINIMUM COOLING CFM	210	210	50	95	660	100	240	280	130	145	275	185	350	25	230	130	935	145
MAXIMUM HEATING CFM	85	85	20	35	235	35	95	100	45	55	100	70	125	10	180	95	535	70
MAXIMUM BOX PRESS. DROP, IN. H <sub>2</sub> O	0.3	0.3	0.3	0.3	0.3	0.3	0.3	0.3	0.3	0.3	0.3	0.3	0.3	0.3	0.3	0.3	0.3	0.3
MAXIMUM N.C. LEVEL	30	30	30	30	30	30	30	30	30	30	30	30	30	30	30	30	30	30
COOL ENT. AIR DB.*F	53	53	53	53	53	53	53	53	53	53	53	53	53	53	53	53	53	53
HEAT ENT. AIR DB.*F	125	125	125	125	125	125	125	125	125	125	125	125	125	125	125	125	125	125
LVG. AIR DB.*F	73	74	72	72	72	72	73	72	72	72	72	72	72	72	85	83	79	76
LOCATION	BLDG MRT.	BASEMENT LING.	BASEMENT LING	BASEMENT LOBBY	RECORD STOR WES	CORR BASEMENT	PRINT SHOP	PRINT SHOP	PRINT SHOP	CONTR CUSTODIAL	RCORD STOR EAST	BASEMENT CORR	MICROFILM BASE LAB	BASEMENT CORR	COURT ADMIN.	ASSIT COURT ADM	COURT ADMIN OPEN OFFICE	TAX COLLECTION OPEN OFFICE
REMARKS																		

VARIABLE AIR VOLUME BOXES

SYMBOL	VAV-19	VAV-20	VAV-21	VAV-22	VAV-23	VAV-24	VAV-25	VAV-26	VAV-27	VAV-28	VAV-29	VAV-30	VAV-31	VAV-32	VAV-33	VAV-34	VAV-35	VAV-36
TYPE	DUAL DUCT	DUAL DUCT	DUAL DUCT	DUAL DUCT	DUAL DUCT	DUAL DUCT	DUAL DUCT	DUAL DUCT	DUAL DUCT	DUAL DUCT	DUAL DUCT	DUAL DUCT	DUAL DUCT	DUAL DUCT	DUAL DUCT	DUAL DUCT	DUAL DUCT	DUAL DUCT
MAXIMUM COOLING CFM	160	1060	215	265	270	295	385	280	570	775	665	630	630	1035	865	1100	515	590
MINIMUM COOLING CFM	65	340	85	105	200	120	155	110	230	310	265	250	250	415	345	440	205	235
MAXIMUM HEATING CFM	50	155	30	50	90	45	120	85	170	225	95	150	150	290	265	300	115	175
MAXIMUM BOX PRESS. DROP, IN. H <sub>2</sub> O	0.3	0.3	0.3	0.3	0.3	0.3	0.3	0.3	0.3	0.3	0.3	0.3	0.3	0.3	0.3	0.3	0.3	0.3
MAXIMUM N.C. LEVEL	30	30	30	30	30	30	30	30	30	30	30	30	30	30	30	30	30	30
COOL ENT. AIR DB.*F	53	53	53	53	53	53	53	53	53	53	53	53	53	53	53	53	53	53
HEAT ENT. AIR DB.*F	125	125	125	125	125	125	125	125	125	125	125	125	125	125	125	125	125	125
LVG. AIR DB.*F	83	72	72	76	75	72	84	83	84	83	72	80	80	83	84	82	79	84
LOCATION	SUPER. OF TAX COLLECTION	TAX COLLECT OPEN OFFICE	TAX COLLECT OFFICE	1ST FLR CORR SOUTH	CONFER ROOM	RECEIPT	TAX COMM OFFICE	ADMIN OFFICE	OFFICE	SUPER OFFICE	DELINQUENT TAX COLLECT	1ST FLR LOBBY	1ST FLR LOBBY	SMOKE LOUNGE	1ST FLR LOBBY	1ST FLR LOBBY	CASHIER	JUDGE BURKE CHAMBERS
REMARKS																		

VARIABLE AIR VOLUME BOXES

SYMBOL	VAV-37	VAV-38	VAV-39	VAV-40	VAV-41	VAV-42	VAV-43	VAV-44	VAV-45	VAV-46	VAV-47	VAV-48	VAV-49	VAV-50	VAV-51	VAV-52	VAV-53	VAV-54
TYPE	DUAL DUCT	DUAL DUCT	DUAL DUCT	DUAL DUCT	DUAL DUCT	DUAL DUCT	DUAL DUCT	DUAL DUCT	DUAL DUCT	DUAL DUCT	DUAL DUCT	DUAL DUCT	DUAL DUCT	DUAL DUCT	DUAL DUCT	DUAL DUCT	DUAL DUCT	DUAL DUCT
MAXIMUM COOLING CFM	450	600	255	350	640	1370	165	270	900	750	610	315	315	575	435	455	600	455
MINIMUM COOLING CFM	180	240	100	140	255	550	80	120	600	500	245	125	125	230	175	180	240	180
MAXIMUM HEATING CFM	130	185	75	50	90	420	30	45	315	180	185	90	90	170	125	135	130	135
MAXIMUM BOX PRESS. DROP, IN. H <sub>2</sub> O	0.3	0.3	0.3	0.3	0.3	0.3	0.3	0.3	0.3	0.3	0.3	0.3	0.3	0.3	0.3	0.3	0.3	0.3
MAXIMUM N.C. LEVEL	30	30	30	30	30	30	30	30	30	30	30	30	30	30	30	30	30	30
COOL ENT. AIR DB.*F	53	53	53	53	53	53	53	53	53	53	53	53	53	53	53	53	53	53
HEAT ENT. AIR DB.*F	125	125	125	125	125	125	125	125	125	125	125	125	125	125	125	125	125	125
LVG. AIR DB.*F	83	84	83	72	72	84	72	72	78	72	84	83	83	84	83	84	78	84
LOCATION	REC CRT ADMIN	JUDGE DILLONS CHAMBERS	1ST FLR CORR NORTH	1ST FLR CORR NORTH	SECURITY	1ST FLR CORR WEST	1ST FLR CORR NORTH	POLICE LOUNGE	COURT RM B	COURT RM A	JUDGE MIKELLS CHAMBER	SECRETURY	SECRETURY	JUDGE FREESMANN CHAMBERS	JUDGE FOWLER CHAMBERS	SECRETURY	JURY ASSEMBLY ROOM	SECRETURY
REMARKS																		

VARIABLE AIR VOLUME BOXES

SYMBOL	VAV-55	VAV-56	VAV-57	VAV-58	VAV-59	VAV-60A&B	VAV-61	VAV-62	VAV-63	VAV-64	VAV-65A & B	VAV-66	VAV-67	VAV-68A & B	VAV-69	VAV-70	VAV-71A & B	VAV-72
TYPE	DUAL DUCT	DUAL DUCT	DUAL DUCT	DUAL DUCT	DUAL DUCT	DUAL DUCT	DUAL DUCT	DUAL DUCT	DUAL DUCT	DUAL DUCT	DUAL DUCT	DUAL DUCT	DUAL DUCT	DUAL DUCT	DUAL DUCT	DUAL DUCT	DUAL DUCT	DUAL DUCT
MAXIMUM COOLING CFM	435	575	315	315	610	550	400	2130	1370	295	650	225	165	445	295	3000	445	295
MINIMUM COOLING CFM	175	230	125	125	245	220	160	850	550	240	500	120	65	320	240	3000	320	240
MAXIMUM HEATING CFM	125	170	90	90	185	165	60	655	425	85	235	45	25	115	85	1075	115	85
MAXIMUM BOX PRESS. DROP, IN. H <sub>2</sub> O	0.3	0.3	0.3	0.3	0.3	0.3	0.3	0.3	0.3	0.3	0.3	0.3	0.3	0.3	0.3	0.3	0.3	0.3
MAXIMUM N.C. LEVEL	30	30	30	30	30	30	30	30	30	30	30	30	30	30	30	30	30	30
COOL ENT. AIR DB.*F	53	53	53	53	53	53	53	53	53	53	53	53	53	53	53	53	53	53
HEAT ENT. AIR DB.*F	125	125	125	125	125	125	125	125	125	125	125	125	125	125	125	125	125	125
LVG. AIR DB.*F	83	84	83	83	84	84	72	84	84	72	76	72	72	72	72	72	72	72
LOCATION	JUDGE GINSBERG CHAMBERS	JUDGE KARPFF CHAMBERS	SECRETURY	SECRETURY	JUDGE MORSE CHAMBERS	2ND FLR CORR EAST	2ND FLR LOBBY	2ND FLR CORR WEST	2ND FLR CORR WEST	JURY C	COURT RM C	WITNESS WTG C	2ND FLR CORR EAST	COURTRM D	JURY D	JURY ASS'Y	COURTRM E	JURY E
REMARKS																		

ROSSER

Rosser International, Inc.

Architects and Engineers  
Atlanta, Savannah, Houston, Los Angeles

128 West Bay St.  
Savannah, Ga. 31402  
(912) 232 1146

This drawing and all prints of it are the property of Rosser International, Inc. and shall remain the property of Rosser International, Inc. until payment in full has been received by Rosser International, Inc. No part of this drawing may be reproduced or transmitted in any form or by any means electronic or mechanical, including photocopying, recording, or by any information storage and retrieval system, without the prior written permission of Rosser International, Inc.

Stamp

THIS DOCUMENT ORIGINALLY ISSUED AND SEALED BY CHARLES A HANNING (NAME OF SEALER) P.E., NO. 16063 ON 03/29/99 (DATE OF SEALING). THIS MEDIA SHOULD NOT BE CONSIDERED A CERTIFIED DOCUMENT

Revisions

No. Date Description

Chatham County Courthouse  
Savannah, Georgia

Key Plan

Sheet Title

SCHEDULES

Job NO. 98132

Drawn SMC

Checked CAH

Date 26-JUL-2001

Sheet No.

M0.2

AS BUILT

1 INCH

E:\CC\_COURT\_98132\M0-2.DGN



Printing Record  
By: \_\_\_\_\_  
Date: \_\_\_\_\_

ADD PLOT  
JUL-2001  
08:20  
STANLEY

VARIABLE AIR VOLUME BOXES

SYMBOL	VAV-73	VAV-74	VAV-75A & B	VAV-76	VAV-77	VAV-78	VAV-79	VAV-80	VAV-81	VAV-82	VAV-83	VAV-84	VAV-85	VAV-86	VAV-87	VAV-88	VAV-89	VAV-90
TYPE	DUAL DUCT	DUAL DUCT	DUAL DUCT	DUAL DUCT	DUAL DUCT	DUAL DUCT	DUAL DUCT	DUAL DUCT	DUAL DUCT	DUAL DUCT	DUAL DUCT	DUAL DUCT	DUAL DUCT	DUAL DUCT	DUAL DUCT	DUAL DUCT	DUAL DUCT	DUAL DUCT
MAXIMUM COOLING CFM	165	195	640	295	380	960	275	460	460	780	460	310	1900	785	140	515	610	260
MINIMUM COOLING CFM	65	120	500	240	150	385	110	185	185	310	185	125	760	315	55	205	245	105
MAXIMUM HEATING CFM	25	45	235	85	125	235	40	130	65	225	65	90	540	115	20	75	150	40
MAXIMUM BOX PRESS. DROP, IN. H <sub>2</sub> O	0.3	0.3	0.3	0.3	0.3	0.3	0.3	0.3	0.3	0.3	0.3	0.3	0.3	0.3	0.3	0.3	0.3	0.3
MAXIMUM N.C. LEVEL	30	30	30	30	30	30	30	30	30	30	30	30	30	30	30	30	30	30
COOL ENT. AIR DB.*F	53	53	53	53	53	53	53	53	53	53	53	53	53	53	53	53	53	53
HEAT ENT. AIR DB.*F	125	125	125	125	125	125	125	125	125	125	125	125	125	125	125	125	125	125
LVG. AIR DB.*F	72	72	76	72	85	80	72	83	72	83	72	83	83	72	72	72	80	72
LOCATION	2ND FLR CORR EAST	COURTRM WTNG E	COURTRM F	JURY F	CIVIL ADMIN.	CVL RECORDS	CVL RECORDS	ST CRT CLRK ADMIN	CVL RECORDS	CHEIF DEPUTY CRIM	CRIMIN ADMIN	JUDICAL OPS OFF	JUDICAL OPS OFF	JUDICAL OPS OFF	3RD FLR LOBBY	3RD FLR CORR	DEED ROOM	DEED ROOM
REMARKS																		

VARIABLE AIR VOLUME BOXES

SYMBOL	VAV-91	VAV-92	VAV-93	VAV-94	VAV-95	VAV-96	VAV-97	VAV-98A & B	VAV-99	VAV-100	VAV-101	VAV-102	VAV-103	VAV-104	VAV-105	VAV-106	VAV-107	VAV-108
TYPE	DUAL DUCT	DUAL DUCT	DUAL DUCT	DUAL DUCT	DUAL DUCT	DUAL DUCT	DUAL DUCT	DUAL DUCT	DUAL DUCT	DUAL DUCT	DUAL DUCT	DUAL DUCT	DUAL DUCT	DUAL DUCT	DUAL DUCT	DUAL DUCT	DUAL DUCT	DUAL DUCT
MAXIMUM COOLING CFM	1765	1175	1020	405	470	190	775	645	95	100	440	460	445	290	190	70	755	565
MINIMUM COOLING CFM	705	470	410	160	190	75	310	300	40	40	175	185	200	115	75	30	300	225
MAXIMUM HEATING CFM	410	240	180	125	205	30	260	170	15	15	135	135	70	90	30	10	215	80
MAXIMUM BOX PRESS. DROP, IN. H <sub>2</sub> O	0.3	0.3	0.3	0.3	0.3	0.3	0.3	0.3	0.3	0.3	0.3	0.3	0.3	0.3	0.3	0.3	0.3	0.3
MAXIMUM N.C. LEVEL	30	30	30	30	30	30	30	30	30	30	30	30	30	30	30	30	30	30
COOL ENT. AIR DB.*F	53	53	53	53	53	53	53	53	53	53	53	53	53	53	53	53	53	53
HEAT ENT. AIR DB.*F	125	125	125	125	125	125	125	125	125	125	125	125	125	125	125	125	125	125
LVG. AIR DB.*F	80	77	75	84	91	72	86	79	72	72	84	83	72	84	72	72	83	72
LOCATION	DEED ROOM	MICROFILM RD RM	MACHINE RM	MICROFILM RD RM	BREAKROOM	DEED ROOM	3RD FLR CORR SOUTH	COURTRM M	LIBRARY	JUDGE ANDRE	JUDGE ANDRE	JUDGE BARKER	CRIMIN ADMIN	CHEIF DEP CRIMI	CVL RECEPT	CVL RECEPT	CVL PROCS	CVL WAITING
REMARKS																		

VARIABLE AIR VOLUME BOXES

SYMBOL	VAV-109	VAV-110	VAV-111	VAV-112	VAV-113	VAV-114	VAV-115	VAV-116	VAV-117	VAV-118	VAV-119	VAV-120	VAV-121	VAV-122	VAV-123	VAV-124	VAV-125	VAV-126
TYPE	DUAL DUCT	DUAL DUCT	DUAL DUCT	DUAL DUCT	DUAL DUCT	DUAL DUCT	DUAL DUCT	DUAL DUCT	DUAL DUCT	DUAL DUCT	DUAL DUCT	DUAL DUCT	DUAL DUCT	DUAL DUCT	DUAL DUCT	DUAL DUCT	DUAL DUCT	DUAL DUCT
MAXIMUM COOLING CFM	285	415	280	370	335	675	175	120	190	265	215	640	175	255	175	255	400	100
MINIMUM COOLING CFM	115	165	110	160	135	270	70	50	75	105	200	255	70	100	70	100	160	40
MAXIMUM HEATING CFM	85	130	85	60	50	100	25	20	30	40	70	200	50	75	50	75	125	15
MAXIMUM BOX PRESS. DROP, IN. H <sub>2</sub> O	0.3	0.3	0.3	0.3	0.3	0.3	0.3	0.3	0.3	0.3	0.3	0.3	0.3	0.3	0.3	0.3	0.3	0.3
MAXIMUM N.C. LEVEL	30	30	30	30	30	30	30	30	30	30	30	30	30	30	30	30	30	30
COOL ENT. AIR DB.*F	53	53	53	53	53	53	53	53	53	53	53	53	53	53	53	53	53	53
HEAT ENT. AIR DB.*F	125	125	125	125	125	125	125	125	125	125	125	125	125	125	125	125	125	125
LVG. AIR DB.*F	84	85	83	72	72	72	72	72	72	72	72	85	83	84	83	84	84	72
LOCATION	CHIEF DEP CVL	MAG STATE CRT CLRK	CHIEF DEP	CVL CONF	BK KEEPING	CERTIFICATIONS	CRT DEPUTY	CRT DEPUTY	CRIM DIV CPR OFFICE	APPEALS	CONFER RM	SUPERIOR CRT CLK	CRT DEPUTY	CRT DEPUTY	CRT DEPUTY	CRT DEPUTY	CRT DEPUTY	CRT DUPUTY
REMARKS																		

VARIABLE AIR VOLUME BOXES

SYMBOL	VAV-127	VAV-128	VAV-129	VAV-130	VAV-131	VAV-132	VAV-133	VAV-134	VAV-135	VAV-136	VAV-137	VAV-138	VAV-139	VAV-140	VAV-141A & B	VAV-142	VAV-143	VAV-144
TYPE	DUAL DUCT	DUAL DUCT	DUAL DUCT	DUAL DUCT	DUAL DUCT	DUAL DUCT	DUAL DUCT	DUAL DUCT	DUAL DUCT	DUAL DUCT	DUAL DUCT	DUAL DUCT	DUAL DUCT	DUAL DUCT	DUAL DUCT	DUAL DUCT	DUAL DUCT	DUAL DUCT
MAXIMUM COOLING CFM	640	335	335	600	405	280	280	280	280	280	600	455	430	635	435	450	2450	1380
MINIMUM COOLING CFM	255	135	135	240	160	110	110	110	110	110	240	180	170	255	175	180	980	550
MAXIMUM HEATING CFM	185	90	90	170	100	80	80	80	80	80	170	125	105	185	115	60	740	425
MAXIMUM BOX PRESS. DROP, IN. H <sub>2</sub> O	0.3	0.3	0.3	0.3	0.3	0.3	0.3	0.3	0.3	0.3	0.3	0.3	0.3	0.3	0.3	0.3	0.3	0.3
MAXIMUM N.C. LEVEL	30	30	30	30	30	30	30	30	30	30	30	30	30	30	30	30	30	30
COOL ENT. AIR DB.*F	54	54	54	54	54	54	54	54	54	53	54	54	54	54	54	54	54	54
HEAT ENT. AIR DB.*F	125	125	125	125	125	125	125	125	125	125	125	125	125	125	125	125	125	125
LVG. AIR DB.*F	84	83	83	84	81	84	84	84	84	84	83	83	81	84	82	72	84	85
LOCATION	JDGS CHAMBER	SECRETURY	SECRETURY	JDGE BRANNEN	LAW CLRK	LAW CLRK	LAW CLRK	LAW CLRK	LAW CLRK	LAW CLRK	SR JDGE CHAMBER	SR JDGE CHAMBER	DIR ALT DISP RESOLUTIONS	SR JUDGE	4TH FLR CORR EAST	4TH FLR LOBBY	4TH FLR CORR WEST	4TH FLR CORR WEST
REMARKS																		

ROSSER

Rosser International, Inc.

Architects and Engineers  
Atlanta, Savannah, Houston, Los Angeles  
128 West Bay St.  
Savannah, Ga. 31402  
(912) 232 1146

This drawing and all prints of it are the property of Rosser International. Prints are to be released to Rosser International upon completion of use. For which they were issued. Reproduction of this drawing without the written consent of Rosser is not permitted and Rosser retains all copyright in this drawing. Statutory and other reserved rights, including the copyright herein, are reserved.

Stamp

THIS DOCUMENT ORIGINALLY ISSUED AND SEALED BY CHARLES A HANNING (NAME OF SEALER) P.E. NO. 16063 ON 03/29/99 (DATE OF SEALING). THIS MEDIA SHOULD NOT BE CONSIDERED A CERTIFIED DOCUMENT

Revisions

No. Date Description

Chatham County Courthouse  
Savannah, Georgia

Key Plan

Sheet Title

SCHEDULES

Job No. 98132  
Drawn SMC  
Checked CAH  
Date 26-JUL-2001

Sheet No. M0.3

AS BUILT

1 INCH

EX-100 COURT 98132/M0.3 DWN

RELEASED FOR CONSTRUCTION



VARIABLE AIR VOLUME BOXES																		
SYMBOL	VAV-145A & B	VAV-146	VAV-147	VAV-148A & B	VAV-149	VAV-150	VAV-151A & B	VAV-152	VAV-153	VAV-154A & B	VAV-155	VAV-156	VAV-157	VAV-158	VAV-159	VAV-160	VAV-161	VAV-162
TYPE	DUAL DUCT	DUAL DUCT	DUAL DUCT	DUAL DUCT	DUAL DUCT	DUAL DUCT	DUAL DUCT	DUAL DUCT	DUAL DUCT	DUAL DUCT	DUAL DUCT	DUAL DUCT	DUAL DUCT	DUAL DUCT	DUAL DUCT	DUAL DUCT	DUAL DUCT	DUAL DUCT
MAXIMUM COOLING CFM	715	310	100	565	335	860	565	310	70	615	300	170	130	760	135	50	50	365
MINIMUM COOLING CFM	500	240	40	400	240	600	400	240	40	400	240	70	20	240	30	15	15	115
MAXIMUM HEATING CFM	210	80	15	135	80	205	135	80	15	190	80	25	20	240	30	15	15	115
MAXIMUM BOX PRESS. DROP, IN. H <sub>2</sub> O	0.3	0.3	0.3	0.3	0.3	0.3	0.3	0.3	0.3	0.3	0.3	0.3	0.3	0.3	0.3	0.3	0.3	0.3
MAXIMUM N.C. LEVEL	30	30	30	30	30	30	30	30	30	30	30	30	30	30	30	30	30	30
COOL ENT. AIR DB.*F	54	54	54	54	54	54	54	54	54	54	54	54	54	54	54	54	54	54
HEAT ENT. AIR DB.*F	125	125	125	125	125	125	125	125	125	125	125	125	125	125	125	125	125	125
LVG. AIR DB.*F	75	72	72	72	72	72	72	72	72	77	72	72	72	85	72	72	72	85
LOCATION	COURTRM J	JURY J	WITNESS WTG J	COURTRM K	JURY K	COURTRM I	COURTRM G	JURY G	WITNESS WTG G	COURTRM H	JURY H	4TH FLR CORR EAST	SOUTH LOCK UP 4TH FLOOR	LOBBY CRTRM J	PRESS BOX COURTRM K	4TH FLOOR CORR WEST	WITNESS WTG G	CHEIF ASSESSOR OFFICE
REMARKS																		

VARIABLE AIR VOLUME BOXES																		
SYMBOL	VAV-163	VAV-164	VAV-165	VAV-166	VAV-167	VAV-168	VAV-169	VAV-170	VAV-171	VAV-172	VAV-173	VAV-174	VAV-175	VAV-176	VAV-177	VAV-178	VAV-179	VAV-180
TYPE	DUAL DUCT	DUAL DUCT	DUAL DUCT	DUAL DUCT	DUAL DUCT	DUAL DUCT	DUAL DUCT	DUAL DUCT	DUAL DUCT	DUAL DUCT	DUAL DUCT	DUAL DUCT	DUAL DUCT	DUAL DUCT	DUAL DUCT	DUAL DUCT	DUAL DUCT	DUAL DUCT
MAXIMUM COOLING CFM	160	140	260	100	1350	3690	335	215	440	845	360	150	670	420	220	60	425	575
MINIMUM COOLING CFM	65	55	105	40	540	1475	135	85	175	340	145	60	270	170	90	25	170	230
MAXIMUM HEATING CFM	45	35	35	15	185	1025	45	30	60	260	50	20	185	120	30	10	60	80
MAXIMUM BOX PRESS. DROP, IN. H <sub>2</sub> O	0.3	0.3	0.3	0.3	0.3	0.3	0.3	0.3	0.3	0.3	0.3	0.3	0.3	0.3	0.3	0.3	0.3	0.3
MAXIMUM N.C. LEVEL	30	30	30	30	30	30	30	30	30	30	30	30	30	30	30	30	30	30
COOL ENT. AIR DB.*F	54	54	54	54	54	54	54	54	54	54	54	54	54	54	54	54	54	54
HEAT ENT. AIR DB.*F	125	125	125	125	125	125	125	125	125	125	125	125	125	125	125	125	125	125
LVG. AIR DB.*F	83	81	72	72	72	83	72	72	72	85	72	72	83	83	72	72	72	72
LOCATION	CHF DEPUTY APPRAISER	CHF DEPUTY APPRAISER	RECEIPT	TAX ACCESSORS OPEN OFFICE	TAX ACCESSORS OPEN OFFICE	TAX ACCESSORS OPEN OFFICE	TAX ACCESSORS OPEN OFFICE	TAX ACCESSORS OPEN OFFICE	TAX ACCESSORS OPEN OFFICE	CMP TECH RM	5TH FLR CORR	5TH FLR LOBBY	CRT REPORTER	CRT REPORTER	STORAGE	PROBATE COURT LOBBY	RECORDS RM	PROBATE CRT
REMARKS																		

VARIABLE AIR VOLUME BOXES																		
SYMBOL	VAV-181	VAV-182	VAV-183	VAV-184	VAV-185	VAV-186	VAV-187	VAV-188	VAV-189	VAV-190	VAV-191	VAV-192	VAV-193	VAV-194	VAV-195	VAV-196	VAV-197	VAV-198
TYPE	DUAL DUCT	DUAL DUCT	DUAL DUCT	DUAL DUCT	DUAL DUCT	DUAL DUCT	DUAL DUCT	DUAL DUCT	DUAL DUCT	DUAL DUCT	DUAL DUCT	DUAL DUCT	DUAL DUCT	DUAL DUCT	DUAL DUCT	DUAL DUCT	DUAL DUCT	DUAL DUCT
MAXIMUM COOLING CFM	585	90	165	400	475	320	675	870	215	300	300	110	440	450	300	285	285	330
MINIMUM COOLING CFM	235	40	65	200	190	130	85	225	120	80	80	15	60	135	85	80	80	95
MAXIMUM HEATING CFM	240	15	25	90	130	85	225	120	30	80	80	15	60	135	85	80	80	95
MAXIMUM BOX PRESS. DROP, IN. H <sub>2</sub> O	0.3	0.3	0.3	0.3	0.3	0.3	0.3	0.3	0.3	0.3	0.3	0.3	0.3	0.3	0.3	0.3	0.3	0.3
MAXIMUM N.C. LEVEL	30	30	30	30	30	30	30	30	30	30	30	30	30	30	30	30	30	30
COOL ENT. AIR DB.*F	54	54	54	54	54	54	54	54	54	54	54	54	54	54	54	54	54	54
HEAT ENT. AIR DB.*F	125	125	125	125	125	125	125	125	125	125	125	125	125	125	125	125	125	125
LVG. AIR DB.*F	90	72	72	76	83	82	86	72	72	72	72	72	72	85	84	83	83	84
LOCATION	PROBATE CRT	OFFICE	PROBATE CRT	HEARING RM	OFFICE	OFFICE	JUDGE LEWIS	COMP TECH RM	LIBRARY	TAX ACC CONF	CONF RM	COM COORD	RECEIPT	ASST DIR	SYS ANALYSIS II	COMP PROG ANALYSIS II	SYS ANALYSIS	COMP PROG
REMARKS																		

VARIABLE AIR VOLUME BOXES																		
SYMBOL	VAV-199	VAV-200	VAV-201	VAV-202	VAV-203	VAV-204	VAV-205	VAV-206	VAV-207	VAV-208	VAV-209	VAV-210	VAV-211	VAV-212	VAV-213	VAV-214	VAV-215	VAV-216
TYPE	DUAL DUCT	DUAL DUCT	DUAL DUCT	DUAL DUCT	DUAL DUCT	DUAL DUCT	DUAL DUCT	DUAL DUCT	DUAL DUCT	DUAL DUCT	DUAL DUCT	DUAL DUCT	DUAL DUCT	DUAL DUCT	DUAL DUCT	DUAL DUCT	DUAL DUCT	DUAL DUCT
MAXIMUM COOLING CFM	285	285	250	285	525	190	745	285	500	485	370	350	350	350	350	400	400	450
MINIMUM COOLING CFM	115	115	115	115	210	75	300	115	200	195	150	140	140	140	140	160	160	180
MAXIMUM HEATING CFM	80	80	80	80	145	25	100	40	195	150	120	110	110	110	110	125	125	125
MAXIMUM BOX PRESS. DROP, IN. H <sub>2</sub> O	0.3	0.3	0.3	0.3	0.3	0.3	0.3	0.3	0.3	0.3	0.3	0.3	0.3	0.3	0.3	0.3	0.3	0.3
MAXIMUM N.C. LEVEL	30	30	30	30	30	30	30	30	30	30	30	30	30	30	30	30	30	30
COOL ENT. AIR DB.*F	54	54	54	54	54	54	54	54	54	54	54	54	54	54	54	54	54	54
HEAT ENT. AIR DB.*F	125	125	125	125	125	125	125	125	125	125	125	125	125	125	125	125	125	125
LVG. AIR DB.*F	83	83	83	83	83	72	72	72	90	85	86	85	85	85	85	85	85	83
LOCATION	NETWK ADMIN	COMP SYS ADMIN	OFFICE	MNGR TECH SYS	DIR MNGMT INFO SYS	OPN OFFICE	TRAINING AREA	TRAINING AREA	DIST ATTY OFFIC	DA's SECRET	ASST DA	ASST DA	ASST DA	ASST DA	ASST DA	ASST DA	ASST DA	MACHINE AREA
REMARKS																		

ROSSER

Rosser International, Inc.

Architects and Engineers  
Atlanta, Savannah, Houston, Los Angeles

128 West Bay St.  
Savannah, Ga. 31402  
(912) 232 1146

This drawing and all prints of it are the property of Rosser International, Inc. and are to be returned to Rosser International, Inc. upon completion of the project. No part of this drawing may be reproduced or transmitted in any form or by any means electronic, mechanical, photocopying, recording, or by any information storage and retrieval system, without the prior written permission of Rosser International, Inc. This media should not be considered a certified document.

Stamp

THIS DOCUMENT ORIGINALLY ISSUED AND SEALED BY CHARLES A. HANNING (NAME OF SEALER), P.E. NO. 16063 ON 03/29/99 (DATE OF SEALING). THIS MEDIA SHOULD NOT BE CONSIDERED A CERTIFIED DOCUMENT

Revisions

No. Date Description

1 08/03/00 GENERAL REVISION

Chatham County Courthouse  
Savannah, Georgia

Key Plan

Sheet Title

SCHEDULES

Job NO. 98132

Drawn SMC

Checked CAH

Date 26-JUL-2001 Sheet No.

AS BUILT

M0.4

1 INCH

E:\CC-COURT.98132\M0.4.DGN

RELEASED FOR CONSTRUCTION

SYMBOL	VAV-271	VAV-272	VAV-273	VAV-274	VAV-275	VAV-276
TYPE	DUAL DUCT	DUAL DUCT	DUAL DUCT	DUAL DUCT	COOLING ONLY	COOLING ONLY
MAXIMUM COOLING CFM	320	880	545	525	1600	1600
MINIMUM COOLING CFM	130	350	220	210	0	0
MAXIMUM HEATING CFM	95	305	185	175	---	---
MAXIMUM BOX PRESS. DROP, IN. H <sub>2</sub> O	0.3	0.3	0.3	0.3	0.3	0.3
MAXIMUM N.C. LEVEL	30	30	30	30	30	30
COOL ENT. AIR DB.*F	54	54	54	54	55	55
HEAT ENT. AIR DB.*F	125	125	125	125	N/A	N/A
LVG. AIR DB.*F	83	86	86	86	55	55
LOCATION	RECORDER CRT AD	FILES	OFFICE	OFFICE	COMPUTER RM	COMPUTER RM
REMARKS					SINGLE DUCT	SINGLE DUCT

Job NO. 98132  
 Drawn SMC  
 Checked CAH  
 Date 26-JUL-2001 Sheet No. MO

E:\VCC COURT-98132\M0 5.DGN

ADULTS RELEASED FOR CONSTRUCTION



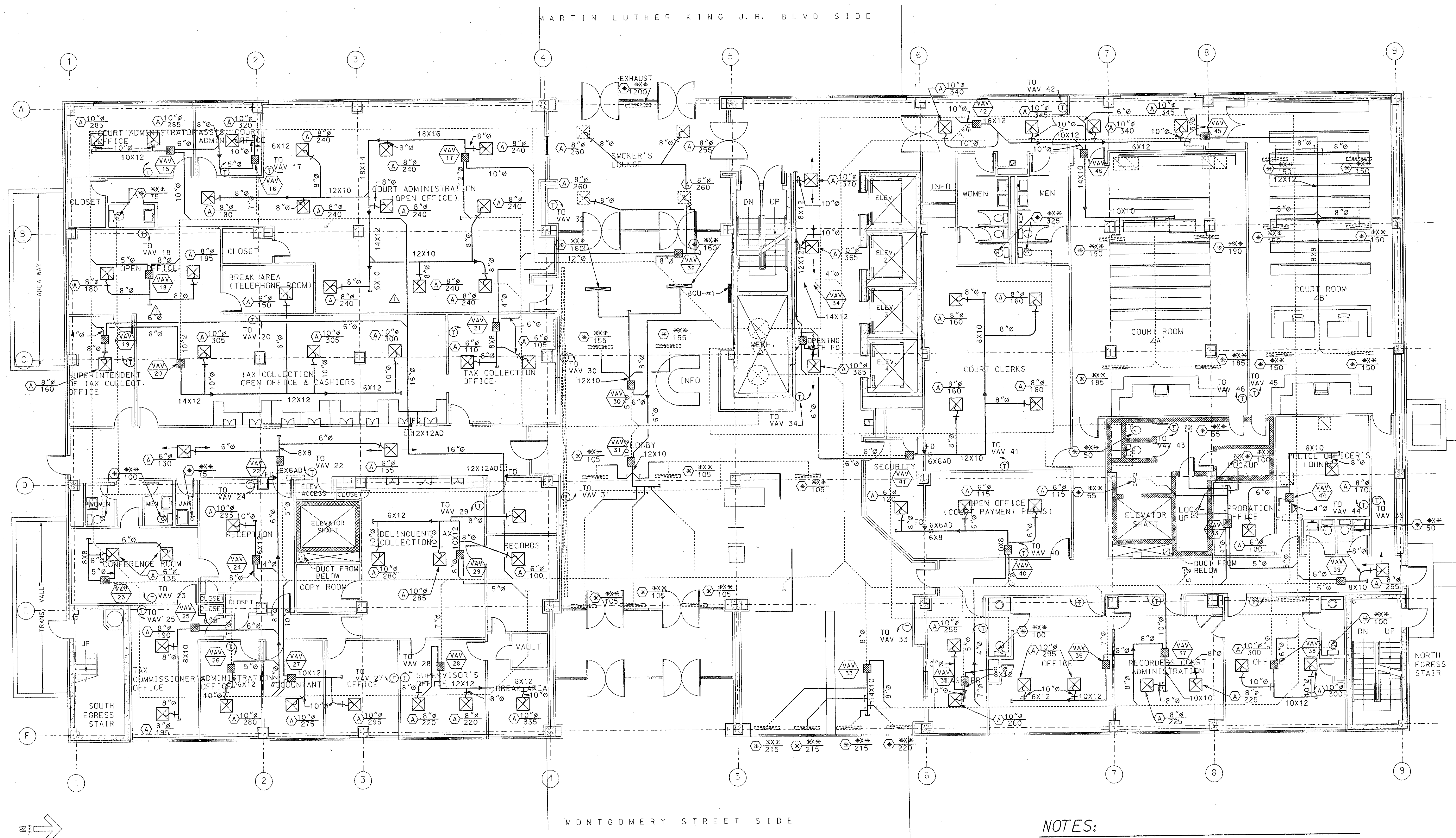
Rosser International, Inc.  
Architects and Engineers  
Atlanta, Savannah, Houston, Los Angeles  
128 West Bay St.  
Savannah, Ga. 31402  
(912) 232 1146

This drawing and all rights of it are the property of Rosser International, Inc. and shall remain the property of Rosser International, Inc. until the project is completed. No part of this drawing shall be reproduced or transmitted in any form or by any means electronic, mechanical, photocopying, recording, or by any information storage and retrieval system, without the prior written permission of Rosser International, Inc.

Stamp  
THIS DOCUMENT ORIGINALLY ISSUED AND SEALED BY CHARLES A. HANNING (NAME OF SEALER) P.E. NO. 16063 ON 03/29/99 (DATE OF SEALING). THIS MEDIA SHOULD NOT BE CONSIDERED A CERTIFIED DOCUMENT

Revisions
No. Date Description
1 02/20/01 GENERAL REVISION

Chatham County Courthouse  
Savannah, Georgia



1 FIRST FLOOR PLAN - HVAC  
M2.2 1/8" = 1'-0"

NOTES:

- 1 THE CONTRACTOR SHALL INSPECT EXISTING FIRE DAMPERS IN WALLS AND DUCTS FOR OPERATIONAL ABILITY. ADVISE ENGINEER OF A DEFECTIVE FIRE DAMPER OR MATERIAL ROUTED THROUGH OPENING.
- 2 SPACE ABOVE CEILING IS A RETURN PLENUM. ALL MATERIAL MUST BE NON-COMBUSTIBLE AND COMPLY WITH CODE.
- 3 INSTALL TRANSITION AS REQUIRED BETWEEN VAV BOX INLETS AND DUCT RUN OUTS SHOWN.
- 4 NEW WORK  
EXISTING WORK TO REMAIN

Key Plan

Sheet Title  
FIRST FLOOR PLAN

Job No. 98132  
Drawn SMC  
Checked CAH  
Date 26-JUL-2001 Sheet No. M2.2

JULY 26, 2001  
RECORD DRAWINGS  
BASED ON INFORMATION  
PROVIDED BY CONTRACTOR

1 INCH

ENCLOSURE: 98132/M2 2.DWG



Rosser International, Inc.  
Architects and Engineers  
Atlanta, Savannah, Houston, Los Angeles  
128 West Bay St.  
Savannah, GA 31402  
(912) 232-1146

This drawing and all prints of it are the property of Rosser International. No part of this drawing may be reproduced or transmitted in any form or by any means electronic or mechanical, including photocopying, recording, or by any information storage and retrieval system, without the written consent of Rosser International. Rosser International is not responsible for any errors or omissions in this drawing.

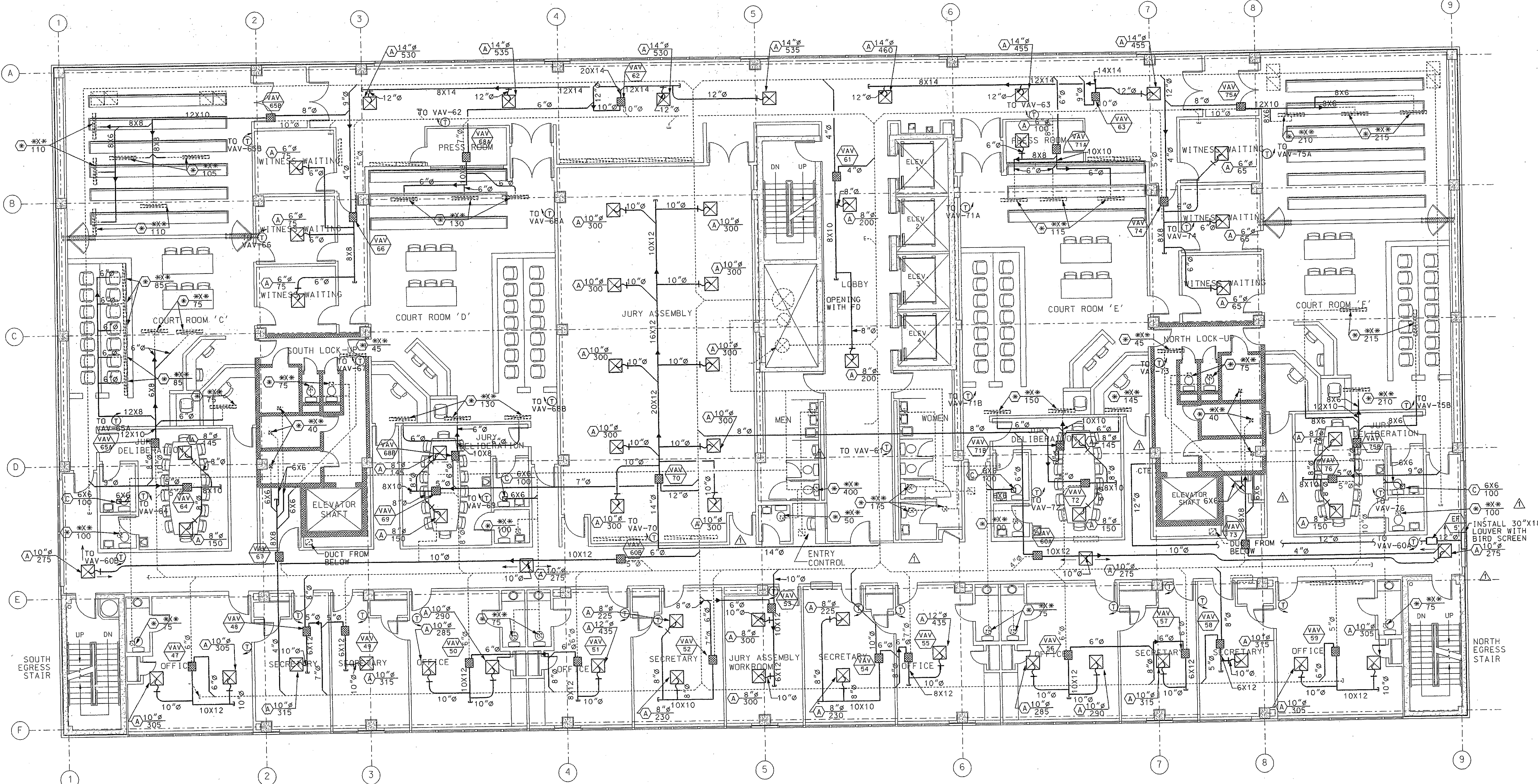
Stamp

THIS DOCUMENT ORIGINALLY ISSUED AND SEALED BY CHARLES A. HANING (NAME OF SEALER) P.E., NO. 16063 ON 03/29/99 (DATE OF SEALING). THIS MEDIA SHOULD NOT BE CONSIDERED A CERTIFIED DOCUMENT

Revisions

No.	Date	Description
1	03/08/00	GENERAL REVISION

Chatham County Courthouse  
Savannah, Georgia



MONTGOMERY STREET SIDE

1 SECOND FLOOR PLAN - HVAC  
M2.3 1/8" = 1'-0"

## NOTES:

- THE CONTRACTOR SHALL INSPECT EXISTING FIRE DAMPERS IN WALLS AND DUCTS FOR OPERATIONAL ABILITY. ADVISE ENGINEER OF A DEFECTIVE FIRE DAMPER OR MATERIAL ROUTED THROUGH OPENING.
- SPACE ABOVE CEILING IS A RETURN PLENUM. ALL MATERIAL MUST BE NON-COMBUSTIBLE AND COMPLY WITH CODE.
- INSTALL TRANSITION AS REQUIRED BETWEEN VAV BOX INLETS AND DUCT RUN OUTS SHOWN.
- NEW WORK  
EXISTING WORK TO REMAIN

Key Plan

Sheet Title

SECOND FLOOR PLAN

Job No. 98132

Drawn SMC

Checked CAH

Date 26-JUL-2001

Sheet No. M2.3

JULY 26, 2001  
RECORD DRAWINGS  
BASED ON INFORMATION  
PROVIDED BY CONTRACTOR

1 INCH

E:\CC-COURT-98132\M2.3.DGN

RELEASED FOR CONSTRUCTION



Rosser International, Inc.  
Architects and Engineers  
Atlanta, Savannah, Houston, Los Angeles  
128 West Bay St.  
Savannah, GA 31402  
(912) 232 1146

This drawing and all prints of it are the property of Rosser International. Prints are to be returned to Rosser upon completion of use. For which they were issued. Reproductions of this drawing without the written consent of Rosser is not permitted and may result in legal action.

Stamp  
THIS DOCUMENT ORIGINALLY ISSUED AND SEALED BY CHARLES A. HANING (NAME OF SEALER P.E. NO. 16063 ON 03/29/99 (DATE OF SEALING). THIS MEDIA SHOULD NOT BE CONSIDERED A CERTIFIED DOCUMENT

No.	Date	Description
1	03/08/00	GENERAL REVISION

No.	Date	Description

Chatham County Courthouse  
Savannah, Georgia

Key Plan

Sheet Title  
THIRD FLOOR PLAN

Job NO. 98132  
Drawn SMC  
Checked CAH  
Date 26-JUL-2001 Sheet No. M2.4

JULY 26, 2001  
RECORD DRAWINGS  
BASED ON INFORMATION  
PROVIDED BY CONTRACTOR

MARTIN LUTHER KING J.R. BLVD SIDE

MONTGOMERY STREET SIDE

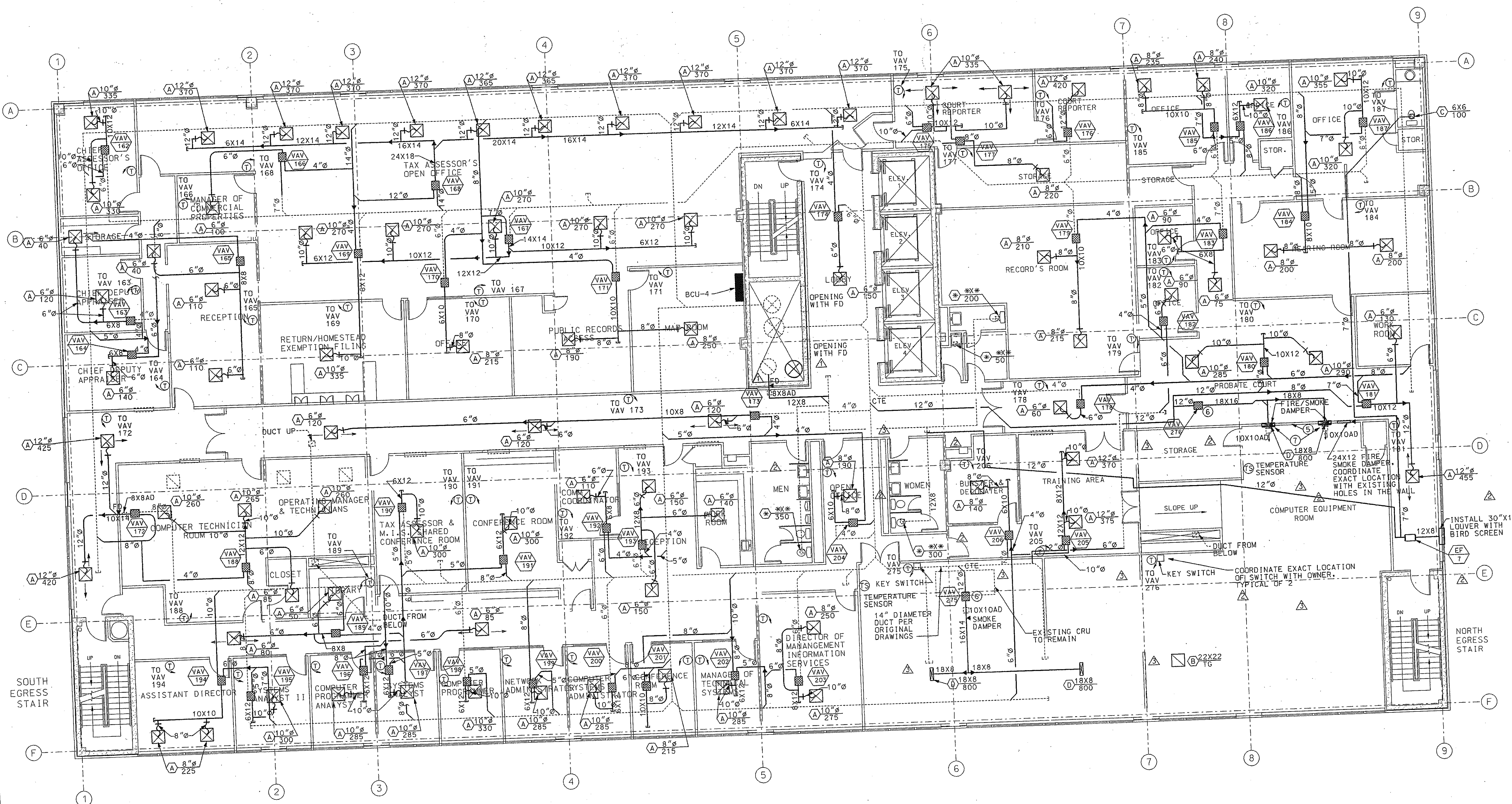
1 THIRD FLOOR PLAN - HVAC  
M2.4 1/8"=1'-0"

## NOTES:

- THE CONTRACTOR SHALL INSPECT EXISTING FIRE DAMPERS IN WALLS AND DUCTS FOR OPERATIONAL ABILITY. ADVISE ENGINEER OF A DEFECTIVE FIRE DAMPER OR MATERIAL ROUTED THROUGH OPENING.
- SPACE ABOVE CEILING IS A RETURN PLENUM. ALL MATERIAL MUST BE NON-COMBUSTIBLE AND COMPLY WITH CODE.
- INSTALL TRANSITION AS REQUIRED BETWEEN VAV BOX INLETS AND DUCT RUN OUTS SHOWN.
- NEW WORK  
EXISTING WORK TO REMAIN



No.	Date	Description
1	12/13/99	GENERAL REVISION
2	03/08/00	GENERAL REVISION
3	07/06/00	COMPUTER ROOM AUXILIARY AIR



1 FIFTH FLOOR PLAN - HVAC  
M2.6 1/8" = 1'-0"

## NOTES:

- THE CONTRACTOR SHALL INSPECT EXISTING FIRE DAMPERS IN WALLS AND DUCTS FOR OPERATIONAL ABILITY. ADVISE ENGINEER OF A DEFECTIVE FIRE DAMPER OR MATERIAL ROUTED THROUGH OPENING.
- SPACE ABOVE CEILING IS A RETURN PLENUM. ALL MATERIAL MUST BE NON-COMBUSTIBLE AND COMPLY WITH CODE.
- INSTALL TRANSITION AS REQUIRED BETWEEN VAV BOX INLETS AND DUCT RUN OUTS SHOWN.
- NEW WORK  
EXISTING WORK TO REMAIN
- ALL OPENINGS IN WALLS AROUND COMPUTER ROOM SHALL BE CLOSED OFF. ANY OPENINGS REMAINING SHALL BE PROTECTED WITH FIRE/SMOKE DAMPER. ANY OPENED DUCTS ABOVE COMPUTER ROOM CEILING SHALL BE CAPPED FOR PROTECTION AGAINST HALON SYSTEM. CONTRACTOR SHALL FIELD VERIFY DUCTS OPEN ABOVE CEILING.
- VAV-275 & 276 SHALL BE COOLING ONLY. THE BOXES SHALL BE FOR EMERGENCY BACK-UP TO THE COMPUTER ROOM IF THE EXISTING COMPUTER ROOM UNITS WERE TO BE DOWN. NORMAL OPERATING MODE IS 100% SHUT-OFF WITH FIRE/SMOKE DAMPER IN WALL FOR RETURN AIR CLOSED. VAV ACTIVATED BY MEANS OF KEY SWITCH. KEY SWITCH SHALL OPEN BOX AND FIRE/SMOKE DAMPER. ONCE BOX IS ACTIVATED, THE THERMOSTAT SHALL MODULATE BOX TO MAINTAIN ROOM SETPOINT. WHEN KEY SWITCH IS ACTIVATED, VAV BOXES 188 THRU 203 SHALL HAVE THE COOLING VALVE THROTTLED DOWN TO MINIMUM SETTING. ROOM THERMOSTATS SHALL CONTINUE CONTROLLING HEATING VALVE FOR ROOM COMFORT. IF SYSTEM IS COMPUTER ROOM CURRENTLY PROTECTED BY HALON SYSTEM, IF SYSTEM IS ACTIVATED, VAV BOXES, DUCT SMOKE AND FIRE/SMOKE DAMPERS AND WALL MOUNTED FIRE/SMOKE DAMPER SHALL BE CLOSED 100%.
- INSTALL 2'X2' PANEL IN CEILING GRID. DROP DUCT THROUGH TILE AND TURN OUT WITH A GOOSE NECK. INSTALL AIR DEVICE ON END OF GOOSE NECK FOR HORIZONTAL THROW.

Key Plan

Sheet Title

FIFTH FLOOR PLAN

Job NO. 98132

Drawn SMC

Checked CAH

Date 26-JUL-2001

Sheet No. M2.6

JULY 26, 2001  
RECORD DRAWINGS  
BASED ON INFORMATION  
PROVIDED BY CONTRACTOR

1 INCH

FILED: COURT. 98132 M2.6.DWG



Stop  
THIS DOCUMENT ORIGINALLY ISSUED AND SEALED BY CHARLES A. HANNING (NAME OF SEALER) P.E. NO. 16063 ON 03/29/99 (DATE OF SEALING). THIS MEDIA SHOULD NOT BE CONSIDERED A CERTIFIED DOCUMENT

No.	Date	Description
1	12/13/99	GENERAL REVISION
2	03/08/00	GENERAL REVISION

Chatham County Courthouse  
Savannah, Georgia

Key Plan

Sheet Title

SIXTH FLOOR PLAN

Job NO. 98132  
Drawn SMC  
Checked CAH  
Date 26-JUL-2001 Sheet No.

M2.7

JULY 26, 2001  
RECORD DRAWING  
BASED ON INFORMATION  
PROVIDED BY CONTRACTOR

1 INCH

FILED COURT 98132 M2 7.000

MARTIN LUTHER KING J.R. BLVD SIDE

MONTGOMERY STREET SIDE

1 SIXTH FLOOR PLAN - HVAC  
M2.7 1/8" = 1'-0"

## NOTES:

- 1 THE CONTRACTOR SHALL INSPECT EXISTING FIRE DAMPERS IN WALLS AND DUCTS FOR OPERATIONAL ABILITY. ADVISE ENGINEER OF A DEFECTIVE FIRE DAMPER OR MATERIAL ROUTED THROUGH OPENING.
- 2 SPACE ABOVE CEILING IS A RETURN PLENUM. ALL MATERIAL MUST BE NON-COMBUSTIBLE AND COMPLY WITH CODE.
- 3 INSTALL TRANSITION AS REQUIRED BETWEEN VAV BOX INLETS AND DUCT RUN OUTS SHOWN.
- 4 NEW WORK  
EXISTING WORK TO REMAIN

