

CHATHAM COUNTY PURCHASING & CONTRACTING DEPARTMENT

ADDENDUM NO. 1 TO 19-0059-4

FOR: QUACCO ROAD AT SR 25 / US 17 INTERSECTION IMPROVEMENTS

PLEASE SEE THE FOLLOWING FOR ADDITIONS, CLARIFICATIONS AND/OR CHANGES:

1. SEE ATTACHED QUESTIONS RECEIVED (2 pages)
2. REPLACE CURRENT BID SHEETS WITH THE ATTACHED **REVISED** BID SHEETS (3 sheets)
3. SEE ATTACHED CHATHAM COUNTY WATER QUALITY SPECIAL PROVISION (1 sheet)
4. SEE ATTACHED **REVISED** PLAN SHEETS (23 sheets)

**NOTE: BID OPENING REMAINS:
2PM, FRIDAY, JUNE 28, 2019**

THE PROPOSER IS RESPONSIBLE FOR MAKING THE NECESSARY CHANGES AND MUST ACKNOWLEDGE RECEIPT OF ADDENDUM.

6/19/19
DATE



ROBERT E. MARSHALL
SENIOR PROCUREMENT SPECIALIST
CHATHAM COUNTY

Addendum #1: Quacco Road at SR 25/US 17 Improvements

1. Additional Special Provision

An additional Special Provision is attached to include Water Quality Filter Baskets in all of the catch basins. The bid tab sheet has also been updated to reflect the installation of the filter baskets.

2. Please add an item for Type II Foundation Backfill.

Type II Foundation backfill pay item and quantity added.

3. Please add an item for the fencing shown on sheet 13-0008

Chain link fence pay item and quantity added.

4. Please clarify what the intent is for widening on Highway 17. The typical sections show variable width full depth widening (12"+6"+2"+1.5") while the cross sections for this area show full depth widening as well as shoulder paving with a different sectional depth.

The intent at this location is to show variable width full depth widening (14"+6"+2"+1.5") with full depth paved shoulders. Cross sections and typical sections have been revised to clarify.

5. Typical section #3 has a callout for "D" which is not listed in the pavement design. Please clarify.

Typical Section #3 revised "D" to "L" for asphaltic concrete leveling required.

6. Given the amount of utility relocations there is some concern that the 200 calendar day schedule may not be feasible. How will the time required to complete the utility relocations be factored into the overall project duration?

AGL indicates they will need 8 weeks and the ROW and drainage structures staked. I am working with Georgia Power to determine a schedule for their relocations. The contract time may be updated with a future addendum after Georgia Power confirms their schedule.

7. If unsuitable materials are encountered, will removal and replacement be paid for under the Field Condition Allowance Item? If not, please add an item for the removal and replacement of unsuitable material.

8. On Drawing 06-002 Pipeline 4.1 – 4.1.1 is identified at 18" RCP. On Drawings 13-004 & 13-005 the pipeline is identified as 24" RCP – which is correct?

The pipe described is a 24-inch RCP. Drawing 06-0002 has been corrected.

9. ***The pipe length for the C1-C2 drainage system on Sheets 06-002 and 13-008 differ in length – which is correct?***

C1-C2 drainage system is removed.

10. ***On Drawing 05-002 Typical Section #3 identifies a “D” in the pavement design. Was this intended to be “L” for leveling?***

Typical section #3 revised “D” to “L” for asphaltic leveling required.

11. ***Will the County consider adding a Foundation Backfill Material, Type II (207-0203) to the project for pipe bedding?***

Type II foundation backfill pay item and quantity added.

12. ***Will the project’s asphalt mixes have to meet GDOT’s new COAC requirements?***

Yes, all asphalt mix designs are required to meet current GDOT Standard Specifications.

13. ***In regard to Item 16 of the Project’s Special Conditions – we appreciate that the County does not provide a Utility Adjustment Schedule, that stated, both Georgia Power and Atlanta Gas Light Company are in conflict with significant portions of the work. Has either utility provided the County with guidance as to their anticipated duration for relocation of their services?***

AGL indicates they will need 8 weeks and the ROW and drainage structures staked. I am working with Georgia Power to determine a schedule for their relocations. The contract time may be updated with a future addendum after Georgia Power confirms their schedule.

14. ***A new line item for Pervious Concrete has been included in the bid tab sheet. This may be utilized at the discretion of the County Engineer at various locations for the 5-foot sidewalk.***

**SR 25/US 17 AT QUACCO ROAD INTERSECTION
CHATHAM COUNTY**

DATE: 6/19/2019

ITEM	ITEM DESCRIPTION	U/M	QTY	UNIT PRICE	EXTENSION
150-1000	TRAFFIC CONTROL -	LS	1		
207-0203	FOUND BKFILL MATL, TP II	CY	510		
210-0100	GRADING COMPLETE -	LS	1		
310-1101	GR AGGR BASE CRS, INCL MATL	TN	6834		
318-3000	AGGR SURF CRS	TN	260		
402-1812	RECYCLED ASPH CONC LEVELING, INCL BITUM MATL & H LIME	TN	1379		
402-3121	RECYCLED ASPH CONC 25 MM SUPERPAVE, GP 1 OR 2, INCL BITUM MATL & H LIME	TN	275		
402-3130	RECYCLED ASPH CONC 12.5 MM SUPERPAVE, GP 2 ONLY, INCL BITUM MATL & H LIME	TN	2717		
402-3190	RECYCLED ASPH CONC 19 MM SUPERPAVE, GP 1 OR 2, INCL BITUM MATL & H LIME	TN	976		
413-0750	TACK COAT	GL	3111		
432-5010	MILL ASPH CONC PVMT, VARIABLE DEPTH	SY	12580		
439-0300	PERVIOUS CONCRETE PAVEMENT, 6 IN THK	SY	475		
441-0014	DRIVEWAY CONCRETE, 4 IN TK	SY	347		
441-0016	DRIVEWAY CONCRETE, 6 IN TK	SY	454		
441-0104	CONC SIDEWALK, 4 IN	SY	2837		
441-0740	CONCRETE MEDIAN, 4 IN	SY	900		
441-0748	CONCRETE MEDIAN, 6 IN	SY	130		
441-4020	CONC VALLEY GUTTER, 6 IN	SY	472		
441-4030	CONC VALLEY GUTTER, 8 IN	SY	37		
441-5004	CONCRETE HEADER CURB, 10 IN, TP 4	LF	162		
441-5057	CONC DOWELED INTEGRAL CURB, TP 7, INCL DOWELS	LF	216		
441-5002	CONCRETE HEADER CURB, 6 IN, TP 2	LF	60		
441-6222	CONC CURB & GUTTER, 8 IN X 30 IN, TP 2	LF	3903		
441-6740	CONC CURB & GUTTER, 8 IN X 30 IN, TP 7	LF	2087		
446-1100	PVMT REINF FABRIC STRIPS, TP 2, 18 INCH WIDTH	LF	4884		
500-3201	CLASS B CONCRETE, RETAINING WALL	CY	13		
500-9999	CLASS B CONC, BASE OR PVMT WIDENING	CY	221		
550-1180	STORM DRAIN PIPE, 18 IN, H 1-10	LF	1064		
550-1240	STORM DRAIN PIPE, 24 IN, H 1-10	LF	1319		
550-1300	STORM DRAIN PIPE, 30 IN, H 1-10	LF	532		
550-1360	STORM DRAIN PIPE, 36 IN, H 1-10	LF	801		
550-2180	SIDE DRAIN PIPE, 18 IN, H 1-10	LF	36		
550-4118	FLARED END SECTION 18 IN, SIDE DRAIN	EA	2		
550-4224	FLARED END SECTION 24 IN, STORM DRAIN	EA	2		
550-4236	FLARED END SECTION 36 IN, STORM DRAIN	EA	1		
634-1200	RIGHT OF WAY MARKERS	EA	26		

ITEM	ITEM DESCRIPTION	U/M	QTY	UNIT PRICE	EXTENSION
641-1200	GUARDRAIL, TP W	LF	271		
641-5015	GUARDRAIL TERMINAL, TP 12A, 31 IN, TANGENT, ENERGY-ABSORBING	EA	1		
643-1152	CH LK FENCE, ZC COAT, 6 FT, 9 GA	LF	735		
643-8010	GATE, CHAIN LINK ZC COAT -	EA	1		
643-8200	BARRIER FENCE (ORANGE), 4 FT	LF	425		
668-1100	CATCH BASIN, GP 1	EA	39		
668-1110	CATCH BASIN, GP 1, ADDL DEPTH	LF	22		
668-2100	DROP INLET, GP 1	EA	10		
668-2110	DROP INLET, GP 1, ADDL DEPTH	LF	5		
668-9800	OUTLET CONTROL STRUCTURE	EA	1		
670-9400	REMOVAL AND REPLACEMENT FOR UNSUITABLE MATERIAL	CY	625		
636-1033	HIGHWAY SIGNS, TP 1 MATL, REFL SHEETING, TP 9	SF	149		
636-1036	HIGHWAY SIGNS, TP 1 MATL, REFL SHEETING, TP 11	SF	125		
636-1041	HIGHWAY SIGNS, TP 2 MATL, REFL SHEETING, TP 9	SF	27		
636-2070	GALV STEEL POSTS, TP 7	LF	690		
639-2002	STEEL WIRE STRAND CABLE, 3/8 IN	LF	164		
639-4003	STRAIN POLE, TP III	EA	2		
653-0110	THERMOPLASTIC PVMT MARKING, ARROW, TP 1	EA	5		
653-0120	THERMOPLASTIC PVMT MARKING, ARROW, TP 2	EA	21		
653-0170	THERMOPLASTIC PVMT MARKING, ARROW, TP 7	EA	2		
653-0210	THERMOPLASTIC PVMT MARKING, WORD, TP 1	EA	10		
653-0320	THERMOPLASTIC PVMT MARKING, SYMBOL, TP 4	EA	3		
653-1501	THERMOPLASTIC SOLID TRAF STRIPE, 5 IN, WHITE	LF	9288		
653-1502	THERMOPLASTIC SOLID TRAF STRIPE, 5 IN, YELLOW	LF	3758		
653-1704	THERMOPLASTIC SOLID TRAF STRIPE, 24 IN, WHITE	LF	215		
653-1804	THERMOPLASTIC SOLID TRAF STRIPE, 8 IN, WHITE	LF	3716		
653-3501	THERMOPLASTIC SKIP TRAF STRIPE, 5 IN, WHITE	GLF	17920		
653-6004	THERMOPLASTIC TRAF STRIPING, WHITE	SY	839		
653-6006	THERMOPLASTIC TRAF STRIPING, YELLOW	SY	2147		
654-1001	RAISED PVMT MARKERS TP 1	EA	96		
654-1003	RAISED PVMT MARKERS TP 3	EA	186		
615-1100	DIRECTIONAL BORE PIPE - 3 IN	LF	300		
636-1033	HIGHWAY SIGNS, TP 1 MATL, REFL SHEETING, TP 9	SF	5		
636-1041	HIGHWAY SIGNS, TP 2 MATL, REFL SHEETING, TP 9	SF	51		
639-4004	STRAIN POLE, TP IV	EA	4		
647-1000	TRAFFIC SIGNAL INSTALLATION NO - 1	LS	1		
682-6233	CONDUIT, NONMETL, TP 3, 2 IN	LF	960		
687-1000	TRAFFIC SIGNAL TIMING -	LS	1		
603-2181	STN DUMPED RIP RAP, TP 3, 18 IN	SY	123		
603-7000	PLASTIC FILTER FABRIC	SY	123		

ITEM	ITEM DESCRIPTION	U/M	QTY	UNIT PRICE	EXTENSION
700-6910	PERMANENT GRASSING	AC	4		
700-7000	AGRICULTURAL LIME	TN	10		
700-8000	FERTILIZER MIXED GRADE	TN	2		
700-8100	FERTILIZER NITROGEN CONTENT	LB	158		
716-2000	EROSION CONTROL MATS, SLOPES	SY	3114		
163-0232	TEMPORARY GRASSING	AC	2		
163-0240	MULCH	TN	79		
163-0300	CONSTRUCTION EXIT	EA	2		
163-0503	CONSTRUCT AND REMOVE SILT CONTROL GATE, TP 3	EA	5		
163-0527	CONSTRUCT AND REMOVE RIP RAP CHECK DAMS, STONE PLAIN RIP RAP/SAND BAGS	EA	12		
163-0539	CONSTRUCT AND REMOVE RETROFIT-SLOTTED BOARD DAM W/STONE FILTER	EA	1		
163-0550	CONSTRUCT AND REMOVE INLET SEDIMENT TRAP	EA	55		
165-0010	MAINTENANCE OF TEMPORARY SILT FENCE, TP A	LF	1928		
165-0030	MAINTENANCE OF TEMPORARY SILT FENCE, TP C	LF	282		
165-0041	MAINTENANCE OF CHECK DAMS - ALL TYPES	LF	120		
165-0096	MAINTENANCE OF RETROFIT-SLOTTED BOARD DAM W/ STONE FILTER	EA	1		
165-0087	MAINTENANCE OF SILT CONTROL GATE, TP 3	EA	5		
165-0101	MAINTENANCE OF CONSTRUCTION EXIT	EA	2		
165-0105	MAINTENANCE OF INLET SEDIMENT TRAP	EA	55		
167-1000	WATER QUALITY MONITORING AND SAMPLING	EA	3		
167-1500	WATER QUALITY INSPECTIONS	MO	12		
171-0010	TEMPORARY SILT FENCE, TYPE A	LF	3855		
171-0030	TEMPORARY SILT FENCE, TYPE C	LF	564		
999-8000	WATER QUALITY INLET FILTER BASKETS	EA	50		
999-9999	FIELD CONDITION ALLOWANCE	LS	1	\$ 30,000.00	\$ 30,000.00
		CONSTRUCTION TOTAL			

NAME / TITLE

COMPANY

ADDRESS

PHONE/FAX/ E-MAIL

revised by addendum1

CHATHAM COUNTY WATER QUALITY SPECIAL PROVISION
WATER QUALITY INLET FILTER

Permanent, post construction water quality filters shall be installed in the catch basins to keep sediment, trash and debris from entering the pipe. The filters must have an aluminum, galvanized or stainless steel frame and removable mesh basket or bag. The filters shall also include a device to absorb hydrocarbons. Examples include Flexstorm FX+ by ADS or Grate Master by ACF Environmental with XTEX Boom. Specifications and installation guidelines for the filters must be submitted for review and approval prior to installation. The cost for the filters shall be included in the bid price for Water Quality Inlet Filters.

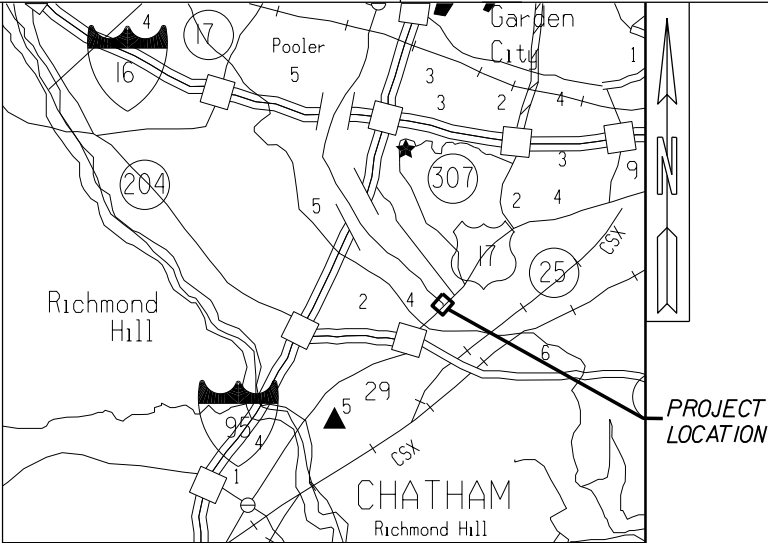
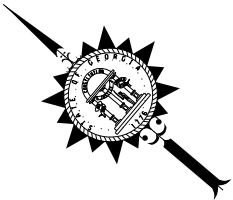
CHATHAM COUNTY

BOARD OF COMMISSIONERS

PLAN AND PROFILE OF PROPOSED

SR 25/US 17 AT QUACCO ROAD

INTERSECTION IMPROVEMENTS



LOCATION SKETCH

DESIGN DATA: QUACCO ROAD
TRAFFIC A.D.T.: 14,830 (2020)
TRAFFIC A.D.T.: 18,900 (2040)
TRAFFIC D.H.V.: 1,600
DIRECTIONAL DIST: 59% EAST, 41% WEST
% TRUCKS: 0.3%
24 HR. TRUCKS %: 4%
SPEED DESIGN: 40 MPH

DESIGN DATA: SR 25/US 17
TRAFFIC A.D.T.: 28,350 (2020)
TRAFFIC A.D.T.: 35,375 (2040)
TRAFFIC D.H.V.: 2,845
DIRECTIONAL DIST: 60% SOUTH 40% NORTH
% TRUCKS: 1%
24 HR. TRUCKS %: 9%
SPEED DESIGN: 45 MPH

FUNCTIONAL CLASS:
SR 25/US 17: URBAN PRINCIPAL ARTERIAL
QUACCO ROAD: URBAN MINOR ARTERIAL

THIS PROJECT IS 100% IN CHATHAM COUNTY AND IS 100% IN CONGRESSIONAL DISTRICT NO. 01.

THIS PROJECT HAS BEEN PREPARED USING THE HORIZONTAL GEORGIA COORDINATE SYSTEM OF 1984 (NAD 1983)/94 EAST ZONE, AND THE NORTH AMERICAN VERTICAL DATUM (NAVD) OF 1988.

THE DATA, TOGETHER WITH ALL OTHER INFORMATION SHOWN ON THESE PLANS OR IN ANYWAY INDICATED THEREBY, WHETHER BY DRAWINGS OR NOTES, OR IN ANY OTHER MANNER, ARE BASED UPON FIELD INVESTIGATIONS AND ARE BELIEVED TO BE INDICATIVE OF ACTUAL CONDITIONS. HOWEVER, THE SAME ARE SHOWN AS INFORMATION ONLY, ARE NOT GUARANTEED, AND DO NOT BIND THE DEPARTMENT OF TRANSPORTATION IN ANY WAY. THE ATTENTION OF BIDDER IS SPECIFICALLY DIRECTED TO SUBSECTIONS 102.04, 102.05, AND 104.03 OF THE SPECIFICATIONS.

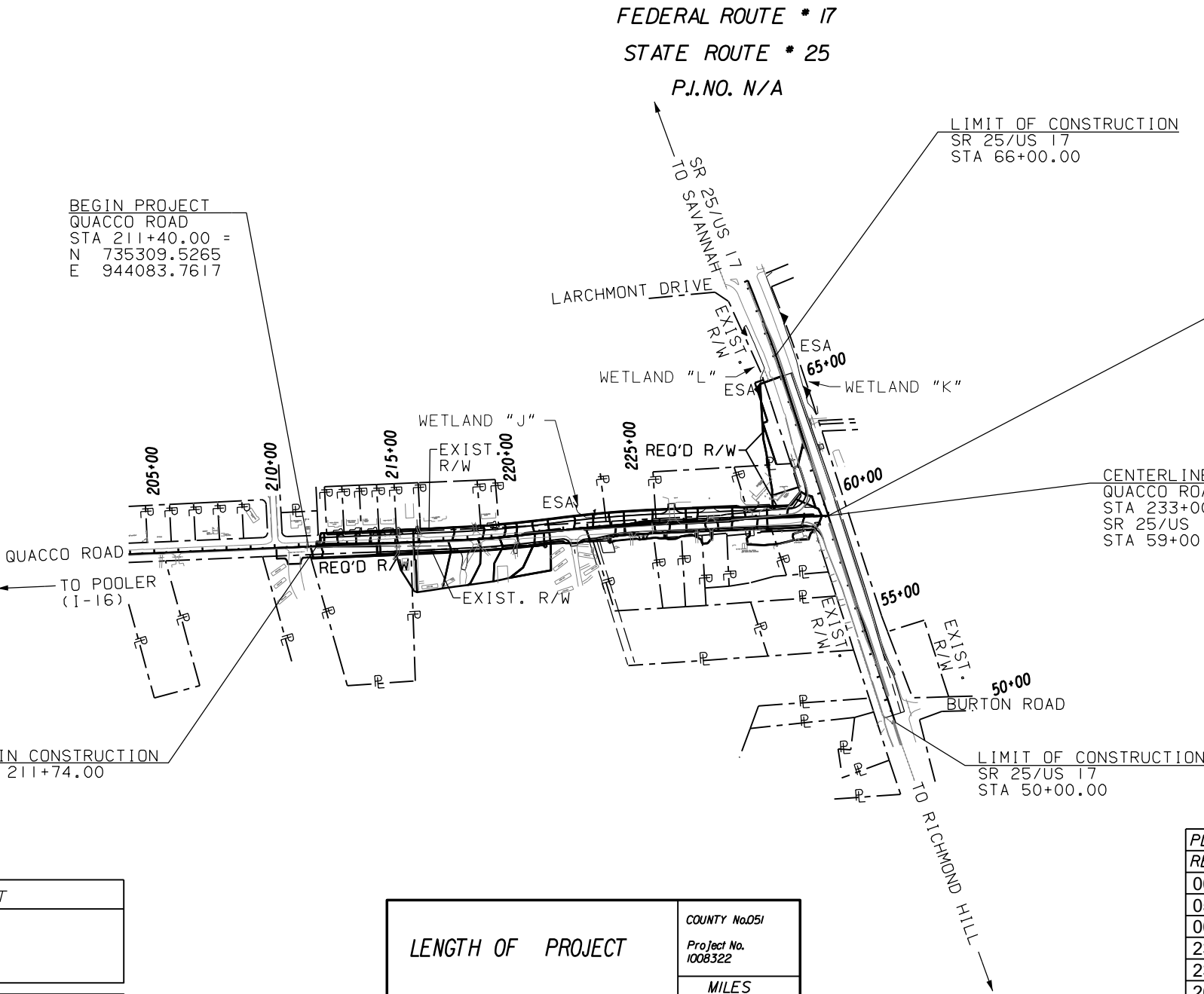
PROJECT MIDPOINT

STA 222+20.07
N 734532.1424
E 944832.8451

BEGIN PROJECT
QUACCO ROAD
STA 211+40.00 =
N 735309.5265
E 944083.7617

BEGIN CONSTRUCTION
STA 211+74.00

PROJECT
LOCATION



NOTE :
ALL REFERENCES IN THIS DOCUMENT, WHICH INCLUDES ALL PAPERS, WRITINGS, DOCUMENTS, DRAWINGS, OR PHOTOGRAPHS USED, OR TO BE USED IN CONNECTION WITH THIS DOCUMENT, TO "STATE HIGHWAY DEPARTMENT OF GEORGIA," "STATE HIGHWAY DEPARTMENT," "GEORGIA STATE HIGHWAY DEPARTMENT," "HIGHWAY DEPARTMENT," OR "DEPARTMENT" WHEN THE CONTEXT THEREOF MEANS THE STATE HIGHWAY DEPARTMENT OF GEORGIA, AND SHALL BE DEEMED TO MEAN THE DEPARTMENT OF TRANSPORTATION.

PREPARED BY:
moffatt & nichol

UNDER THE SUPERVISION OF:
DARREN J. WILTON, P.E.



5/28/19

LENGTH OF PROJECT	COUNTY No. 051
	Project No. 1008322
	MILES
NET LENGTH OF ROADWAY	0.409
NET LENGTH OF BRIDGES	0.000
NET LENGTH OF PROJECT	0.409
NET LENGTH OF EXCEPTIONS	0.000
GROSS LENGTH OF PROJECT	0.409



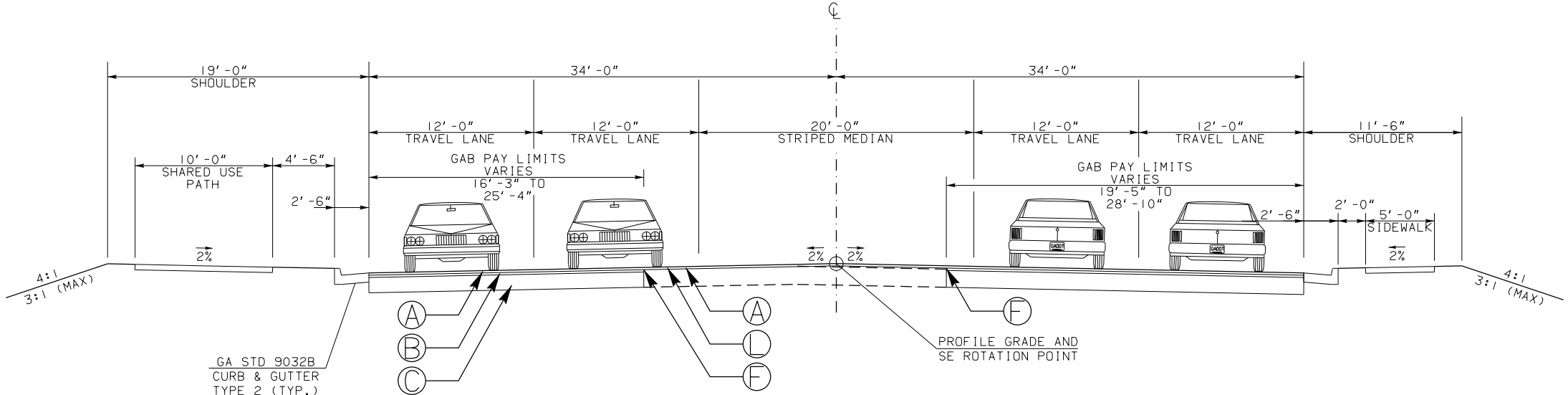
PLANS COMPLETED	5-28-19
REVISIONS	
06/19/19 : 03-0001, 05-0002, 05-0004,	
05-0005, 05-0006, 06-0001, 06-0002,	
06-0003, 13-0006, 13-0007, 13-0008,	
23-0009, 23-0010, 23-0011, 23-0012,	
23-0013, 24-0006, 24-0007, 24-0008,	
26-0008, 54-0016, 54-0024	

DRAWING No.

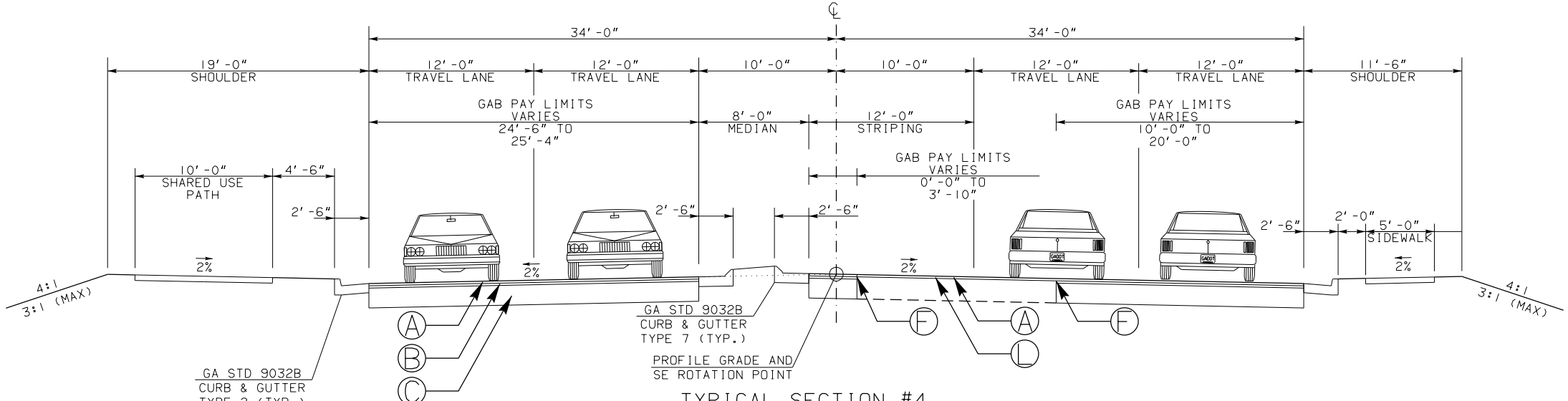
01-0001

[illegible]

moffatt & nichol



TYPICAL SECTION #3
QUACCO ROAD
STA 217+24.00 TO STA 220+35.00



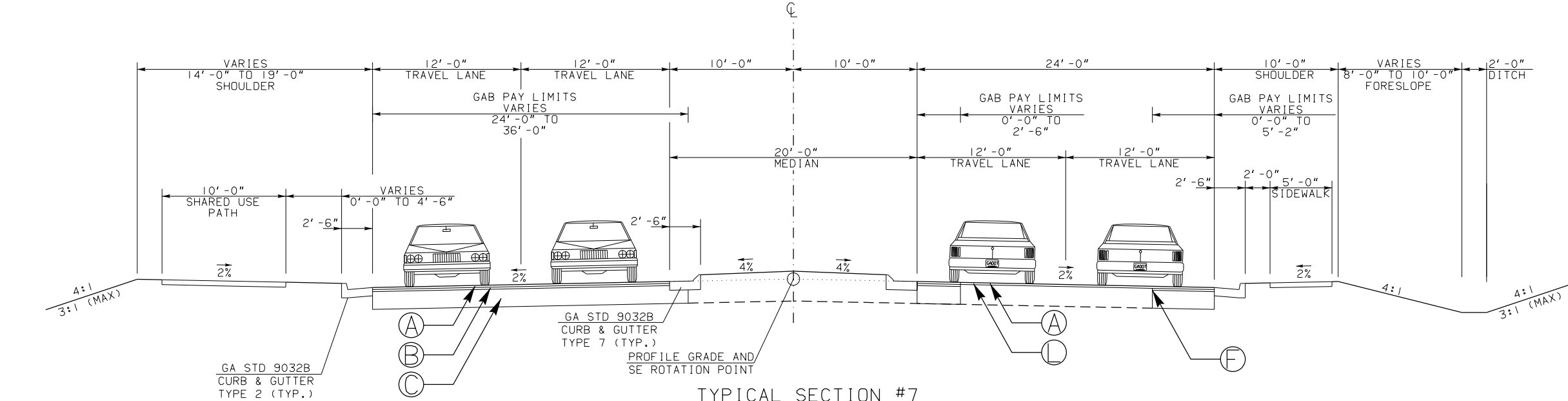
TYPICAL SECTION #4
QUACCO ROAD
STA 220+39.00 TO STA 221+85.00

PAVEMENT DESIGN

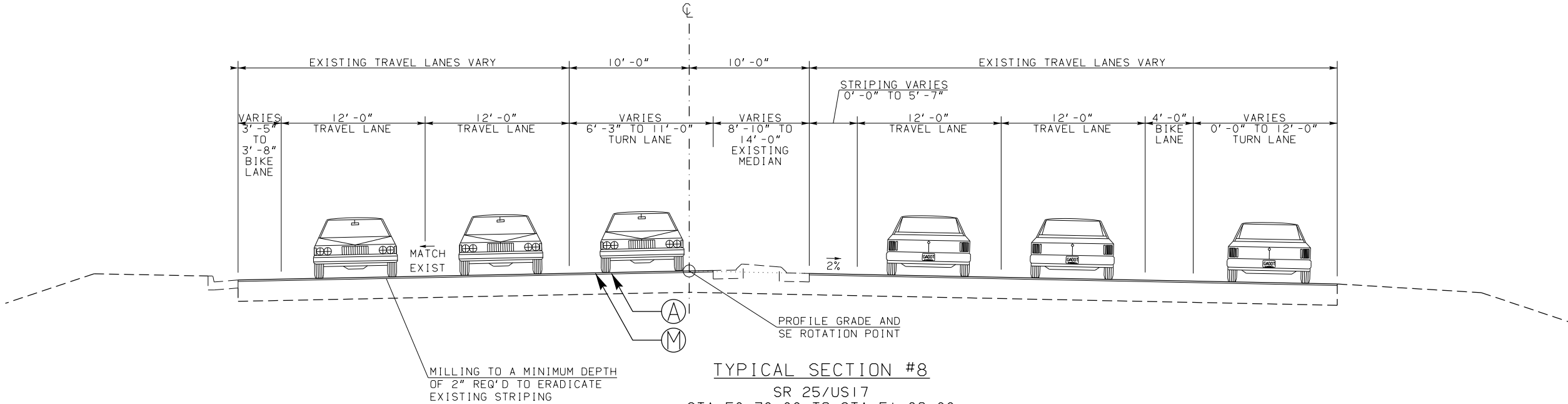
- (A) 220 LB/SY RECYCLED ASPH CONC 12.5 MM SUPERPAVE, GP 2 ONLY, INCL BITUM MATL & H LIME
- (B) 220 LB/SY RECYCLED ASPH CONC 19 MM SUPERPAVE, GP 1 OR 2, INCL BITUM MATL & H LIME
- (C) 12" GRADED AGGREGATE BASE
- (F) PAVEMENT REINFORCEMENT FABRIC
- (L) RECYCLED ASPH CONC LEVELING, INCL BITUM MATL & H LIME (AS REQ'D)
- (M) VARIABLE DEPTH ASPHALT MILLING. 0.5" MINIMUM
- (P) SAFETY SHOULDER REQUIRED. SEE GDOT DETAIL P-7

NOTES

- TYPICAL SECTIONS ILLUSTRATING SUPERELEVATION AND TURN LANES ALSO APPLY TO OPPOSITE-HAND SECTIONS. SEE PLANS FOR LOCATION, DIRECTION, AND COMPLETE DETAILS OF EACH.
- LOCATION OF EXISTING PAVEMENT VARIES WITH RESPECT TO THE PROPOSED CONSTRUCTION CENTERLINE.



TYPICAL SECTION #7
QUACCO ROAD
STA 225+37.00 TO STA 228+87.00



TYPICAL SECTION #8
SR 25/US 17
STA 50+30.00 TO STA 51+86.00
STA 52+37.28 TO STA 53+39.43

PAVEMENT DESIGN

- A 220 LB/SY RECYCLED ASPH CONC 12.5 MM SUPERPAVE, GP 2 ONLY, INCL BITUM MATL & H LIME
- B 220 LB/SY RECYCLED ASPH CONC 19 MM SUPERPAVE, GP 1 OR 2, INCL BITUM MATL & H LIME
- C 12" GRADED AGGREGATE BASE
- F PAVEMENT REINFORCEMENT FABRIC
- L RECYCLED ASPH CONC LEVELING, INCL BITUM MATL & H LIME (AS REQ'D)
- M VARIABLE DEPTH ASPHALT MILLING.
- P SAFETY SHOULDER REQUIRED. SEE GDOT DETAIL P-7

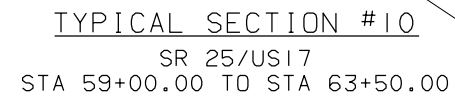
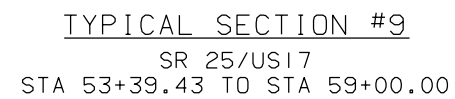
NOTES

1. TYPICAL SECTIONS ILLUSTRATING SUPERELEVATION AND TURN LANES ALSO APPLY TO OPPOSITE-HAND SECTIONS. SEE PLANS FOR LOCATION, DIRECTION, AND COMPLETE DETAILS OF EACH.
2. LOCATION OF EXISTING PAVEMENT VARIES WITH RESPECT TO THE PROPOSED CONSTRUCTION CENTERLINE.
3. REFER TO HEADER CURB DETAIL AND WALL DETAIL.



NOT TO SCALE

REVISION DATES			TYPICAL SECTIONS		
06/19/19					
			SR 25/US 17 AT QUACCO ROAD		
			INTERSECTION IMPROVEMENTS		
CHECKED:		DATE:		DRAWING No.	
BACKCHECKED:		DATE:		05-0004	
CORRECTED:		DATE:			
VERIFIED:		DATE:			



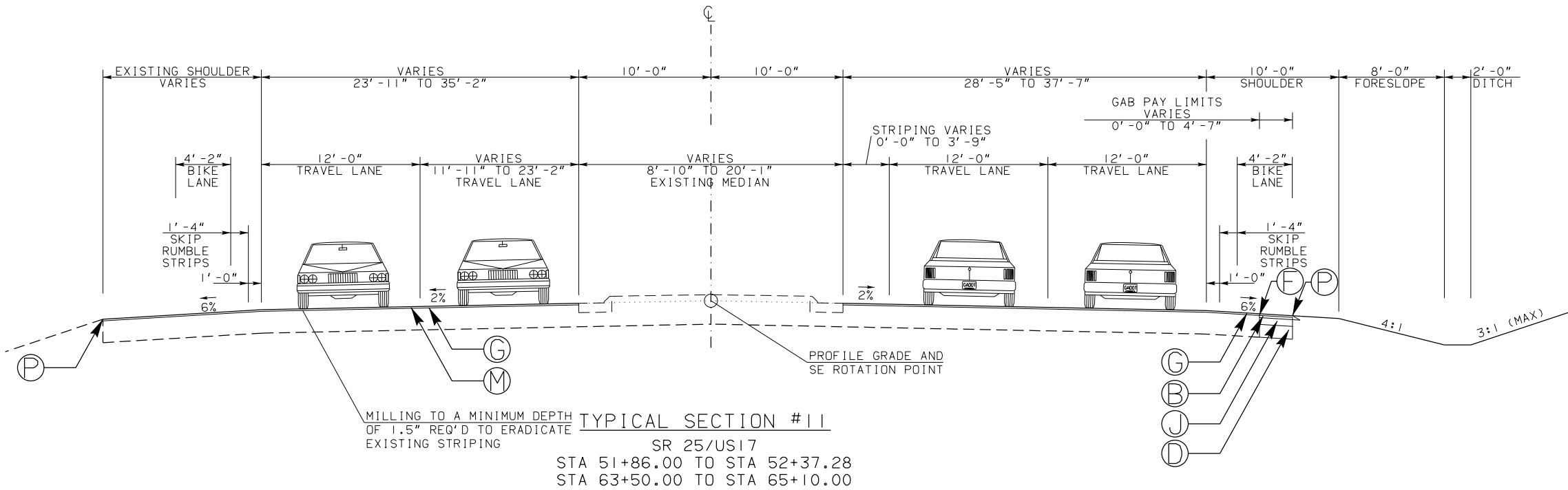
- (G) 165 LB/SY RECYCLED ASPH CONC 12.5 MM SUPERPAVE, GP 2 ONLY, INCL BITUM MATL & H LIME
- (B) 220 LB/SY RECYCLED ASPH CONC 19 MM SUPERPAVE, GP 1 OR 2, INCL BITUM MATL & H LIME
- (J) 660 LB/SY RECYCLED ASPH CONC 25 MM SUPERPAVE, GP 1 OR 2, INCL BITUM MATL & H LIME
- (D) 14" GRADED AGGREGATE BASE
- (F) PAVEMENT REINFORCEMENT FABRIC
- (L) RECYCLED ASPH CONC LEVELING, INCL BITUM MATL & H LIME (AS REQ'D)
- (M) VARIABLE DEPTH ASPHALT MILLING.
- (P) SAFETY SHOULDER REQUIRED. SEE GDOT DETAIL P-7

1. TYPICAL SECTIONS ILLUSTRATING SUPERELEVATION AND TURN LANES ALSO APPLY TO OPPOSITE-HAND SECTIONS. SEE PLANS FOR LOCATION, DIRECTION, AND COMPLETE DETAILS OF EACH.
2. LOCATION OF EXISTING PAVEMENT VARIES WITH RESPECT TO THE PROPOSED CONSTRUCTION CENTERLINE.



NOT TO SCALE

REVISION DATES			TYPICAL SECTIONS SR 25/US 17 AT QUACCO ROAD INTERSECTION IMPROVEMENTS			
06/19/19						
			CHECKED:		DATE:	
			BACKCHECKED:		DATE:	
			CORRECTED:		DATE:	
			VERIFIED:		DATE:	
						DRAWING No.
						05-0005



PAVEMENT DESIGN

- G 165 LB/SY RECYCLED ASPH CONC 12.5 MM SUPERPAVE, GP 2 ONLY, INCL BITUM MATL & H LIME
- B 220 LB/SY RECYCLED ASPH CONC 19 MM SUPERPAVE, GP 1 OR 2, INCL BITUM MATL & H LIME
- J 660 LB/SY RECYCLED ASPH CONC 25 MM SUPERPAVE, GP 1 OR 2, INCL BITUM MATL & H LIME
- D 14" GRADED AGGREGATE BASE
- F PAVEMENT REINFORCEMENT FABRIC
- M VARIABLE DEPTH ASPHALT MILLING.
- P SAFETY SHOULDER REQUIRED. SEE GDOT DETAIL P-7

NOTES

- TYPICAL SECTIONS ILLUSTRATING SUPERELEVATION AND TURN LANES ALSO APPLY TO OPPOSITE-HAND SECTIONS. SEE PLANS FOR LOCATION, DIRECTION, AND COMPLETE DETAILS OF EACH.
- LOCATION OF EXISTING PAVEMENT VARIES WITH RESPECT TO THE PROPOSED CONSTRUCTION CENTERLINE.

SUMMARY OF QUANTITIES

SUMMARY OF DRAINAGE QUANTITIES														
STR. NO.	LOCATION	STORM DRAIN PIPE				FOUND BK HILL MAT'L, TP II CY	CATCH BASINS STD 1033 & 1034 GROUP 1		DROP INLET STD 1019-A GROUP 1		DROP INLET STD 9031-S GROUP 1		FLARED END SECTION STD 1120	
		18 INCH H=1-10 LF	24 INCH H=1-10 LF	30 INCH H=1-10 LF	36 INCH H=1-10 LF		H=6' OR LESS EA	ADD'L DEPTH LF	H=6' OR LESS EA	ADD'L DEPTH LF	H=6' OR LESS EA	ADD'L DEPTH LF	24 INCH STORM DRAIN EA	36 INCH STORM DRAIN EA
A28	212+05L	35.0				3.6	1							
A27	312+40L	28.0				2.9	1							
A26	212+61.83L	136.2				14.2			1					
A25	213+98L		36.6			4.7	1	0.3						
A24	214+34.5L		36.6			4.7			1					
A23	214+70L		37.1			4.8	1	0.4						
A23.1	214+70R		76.0			9.8	1	0.1						
A23.2	214+35R		35.0			4.5	1	0.0						
A22	215+07L		237.9			30.6			1					
A21	217+45L		124.0			16.0	1	0.6						
A20	218+17L		89.3			11.5	1	0.2						
A19	219+60L		46.6			6.0	1							
A18	220+07L		34.7			4.5	1							
A17	220+42L		34.7			4.5	1							
A16	220+77L			173.1		26.9	1	0.5						
A15	222+50L					11.7	1	0.8						
A14	223+25L			35.3		5.5	1	0.7						
A13	223+60L			35.3		5.5	1	0.7						
A12	223+95L			177.4		27.5	1	0.9						
A11	225+71L			35.3		5.5	1	1.0						
A10	226+06L				151.0	27.7				1	0.62			
A9	227+57L				113.0	20.7	1	1.7						
A8	228+70L				35.0	6.4	1	1.7						
A7	229+05L				50.0	9.2	1	1.8						
A6	229+55L				176.0	32.3	1	2.1						
A5	231+31L				30.0	5.5	1	2.7						
A4	231+61L				70.7	13.0				1	2.11			
A4.1	231+61R		76.6			9.9	1	1.9						
A4.1.1	230+04R		111.0			14.3	1	1.7						
A4.1.1A	230+10R	13.4				1.4								
A4.1.2	229+00R	104.0				10.8	1	0.5						
A4.1.3	228+70R	30.0				3.1	1	0.3						
A4.1.4	228+40R	30.0				3.1	1	0.3						
A4.1.5	227+90R	50.0				5.2	1	0.3						
A4.1.5A	228+00R	17.2				1.8								
A4.1.6	226+41R	149.0				15.5	1	0.3						
A4.1.6A	226+41R	16.0				1.7	1							
A4.1.7	226+06R	35.1				3.7				1				
A4.1.8	225+76R	29.8				3.1				1				
A4.1.8A	225+76R	20.5				2.1								
A4.2	231+91R	30.0				3.1								
A4.3	232+10.04R	27.0				2.8								
A3	60+10L				107.7	19.8			1	2.14				
A2	61+17.63L				66.8	12.3					1			
A1	61+87.77L													1
B10	217+27R	124.9				13.0	1							
B9	218+51R	89.7				9.3	1							
B8	219+40R	69.6				7.2	1							
B7	220+09R		33.3			4.3			1					
B6	220+42R		35.3			4.5	1							
B5	220+77R		40.0			5.1	1							
B4	221+17R		183.4			23.6	1	0.1						
B4.1	221+17R	11.3				1.2								
B3	223+01R		35.6			4.6	1							
B2	223+37R		14.4			1.9	1							
B2.1	224+15R	7.8				0.8	1							
B2.2	224+16.29R	8.9				0.9							1	
B1	223+34.61R												1	
AS DIRECTED:														
PROJECT TOTAL:		1063.4	1318.1	531.9	800.1	509.9	39	21.6	5	2.1	5	2.7	2	1

SUMMARY OF SIGNING QUANTITIES														
LOCATION	CODE	HIGHWAY SIGNS						POSTS						
		TYPE 9 SHEETING			TYPE 11 SHEETING			TYPE 7			LENGTH		TOTAL	
		TYPE 1 MATERIAL		TYPE MATERIAL 2		TYPE 1 MATERIAL					LF	QTY	LF	
		SIZE	QTY	SF	SIZE	QTY	SF	SIZE	QTY	SF				
50+97R	W16-8P	36x12	1	3.00							15.00	1	15.00	
50+97R	W2-2	30x30	1	6.25							15.00	1	15.00	
56+00L	W2-2	30x30	1	6.25							15.00	1	15.00	
62+00R	W2-2	30x30	1	6.25							15.00	1	15.00	
219+00R	W2-2	30x30	1	6.25							15.00	1	15.00	
51+35L	R5-1							36x36	1	9.00	15.00	1	15.00	
58+65R	R5-1							36x36	1	9.00	15.00	1	15.00	
60+12L	R5-1							36x36	1	9.00	15.00	1	15.00	
227+00	R5-1							36x36	1	9.00	15.00	1	15.00	
53+35L	R5-1A							42x30	1	8.75	15.00	1	15.00	
57+00R	R5-1A							42x30	1	8.75	15.00	1	15.00	
62+04L	R5-1A							42x30	1	8.75	15.00	1	15.00	
56+00R	W16-8P	35x12	1	2.92										
58+65L	R4-7	24x30	1	5.00							15.00	1	15.00	
59+34R	R4-7	24x30	1	5.00							15.00	1	15.00	
232+35L	R4-7	24x30	1	5.00							15.00	1	15.00	
231+82L	R1-2							36 TRI	1	4.00	15.00	1	15.00	
232+50R	R1-2							36 TRI	1	4.00	15.00	1	15.00	
60+39L	R560-5	18x24	1	3.00							15.00	1	15.00	
232+15R	R560-5	18x24	1	3.00							15.00	1	15.00	
62+00R	W16-8P	45x12	1	3.75										
64+35L	R4-4A	36x30	1	7.50							15.00	1	15.00	
212+50L	W6-3	36x36	1	9.00							15.00	1	15.00	
212+50R	W6-1	36x36	1	9.00							15.00	1	15.00	
219+00R	W16-8P	47x12	1	3.92										
222+50L	W4-2	36x36	1	9.00							15.00	1	15.00	
222+64R	R1-1							36x36	1	9.00	15.00	1	15.00	
225+57R	R1-1							36x36	1	9.00	15.00	1	15.00	
226+07L	R1-1							36x36	1	9.00	15.00	1	15.00	
227+70L	R1-1							36x36	1	9.00	15.00	1	15.00	
230+05R	R1-1							36x36	1	9.00	15.00	1	15.00	
225+32L	R6-1R				54x18	1	6.75				15.00	1	15.00	
226+50R	R6-1R				54x18	1	6.75				15.00	1	15.00	
228+10L	R6-1R				54x18	1	6.75				15.00	1	60.00	
230+30L	R6-1R				54x18	1	6.75				15.00	1	15.00	
226+00R	R3-7R	36x36	1	9.00							15.00	1	15.00	
227+00L	W9-2L	36x36	1	9.00							15.00	1	15.00	
227+97R	W3-3	30x30	1	6.25							15.00	1	15.00	
229+00L	R2-1-40	30x36	1	7.50							15.00	1	15.00	
229+00R	W11-1	30x30	1	6.25							15.00	1	15.00	
59+11R	W1-7	48x24	1	8.00							15.00	1	15.00	
59+06R	OM4-3	18x18	1	2.25							15.00	1	15.00	
59+16R	OM4-3	18x18	1	2.25							15.00	1	15.00	
223+26R	CAT		2	2.00							15.00	1	15.00	
223+26L	CAT		2	2.00							15.00	1	15.00	
PROJECT TOTAL:				149			27			124			690	



REVISION DATES

06/19/19

SUMMARY QUANTITIES

SR 25/US 17 AT QUACCO ROAD

INTERSECTION IMPROVEMENTS

CHECKED: DATE: BACKCHECKED: DATE: CORRECTED: DATE: VERIFIED: DATE:

DRAWING No.

06-0002

SUMMARY OF QUANTITIES

SUMMARY OF STRIPING QUANTITIES													
LOCATION	THERMOPLASTIC PAVEMENT MARKINGS											RAISED PAVEMENT MARKERS	
	ARROW TYPE 2 EA	ARROW TYPE 7 EA	WORD TYPE 1 EA	SYMBOL TYPE 4 EA	SOLID STRIPE				SKIP STRIPE	HATCHING		TYPE 1 EA	TYPE 3 EA
					5 INCH		24 INCH	8 INCH	5 INCH	WHITE SY	YELLOW SY		
					WHITE LF	YELLOW LF	WHITE LF	WHITE LF	WHITE GLF				
212+40-214+00 - SHEET 1					160	62				235	67	14	
214+00-219+50 - SHEET 2					827			253	127	156	1004	55	
219+50-225+00 - SHEET 3	2				1047	480	12.5	146	877	175	466	26	22
225+00-231+00 - SHEET 4	3		3		1452	1201	84.1	1951	12225				38
231+00-232+50 - SHEET 5	6		3		782	287	24	483	136	247			16
50+30-53+00 - SHEET 6	2				1010	179			946		113		18
53+00-58+00 - SHEET 7	4		4		2183	729			1557	26	119		48
58+00-61+00 - SHEET 5	2	2		3	724	273	94.0	883	682		166		22
61+00-65+10 - SHEET 8	2				1103	548			1371		212		21
PROJECT TOTAL:	21	2	10	3	9288	3758	215	3715	17920	839	2147	96	186

SUMMARY OF SIGNAL QUANTITIES							
LOCATION	INSTL NO.	LUMP	DIRECTIONAL BORE 3 IN	HIGHWAY SIGNS TP 1 MATL REFL SHEETING TP 9	HIGHWAY SIGNS TP 2 MATL REFL SHEETING TP 9	STRAIN POLE TP IV	CONDUIT RIGID 2 IN
			LF	SF	SF	EA	LF
US 17 @ Quacco Road	1	1	300	5	51	4	960
PROJECT TOTAL:			300	5	51	4	960

SPAN WIRE SIGNS							
LOCATION	CODE	HIGHWAY SIGNS			STRAIN POLES		STEEL WIRE STRAND CABLE, 3/8 IN
		TYPE 9 SHEETING		SPAN LENGTH	TYPE IV		
		TYPE 2 MATERIAL					
		SIZE	QTY	SF	LF	EA	LF
56+00L	R3-5	30x36	2	30	132.00	2	164
PROJECT TOTAL:				30		2	164

FENCING		
LOCATION	CHLK FENCE ZINC COATING 6FT, 9GA	GATE, CHAIN LINK ZC COAT 6FT X 15 FT, 9GA
	LF	EA
STA 61+80.00 to STA 65+00.00	734.5	1
PROJECT TOTAL:	734.5	1



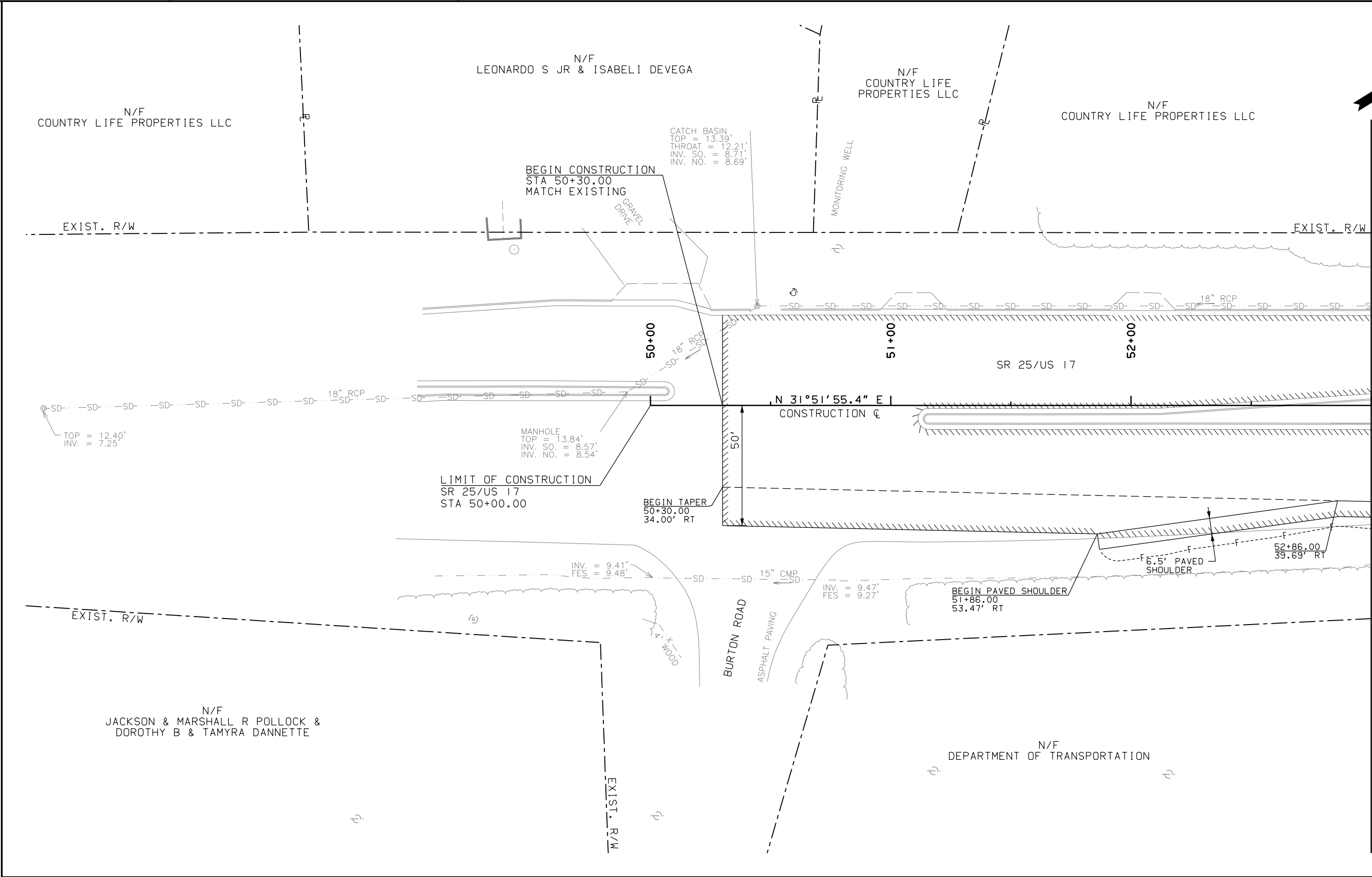
REVISION DATES

06/19/19		

SUMMARY QUANTITIES

SR 25/US 17 AT QUACCO ROAD
INTERSECTION IMPROVEMENTS

CHECKED:		DATE:		DRAWING No. 06-0003
BACKCHECKED:		DATE:		
CORRECTED:		DATE:		
VERIFIED:		DATE:		



DRAWING No. 13-0007
MATCH LINE STA. 53+00

PROPERTY AND EXISTING R/W LINE
REQUIRED R/W LINE
CONSTRUCTION LIMITS
EASEMENT FOR CONSTR
& MAINTENANCE OF SLOPES
EASEMENT FOR CONSTR OF SLOPES
EASEMENT FOR CONSTR OF DRIVES

BEGIN LIMIT OF ACCESS.....BLA
END LIMIT OF ACCESS.....ELA
LIMIT OF ACCESS
REQ'D R/W & LIMIT OF ACCESS
ORANGE BARRIER FENCE
ESA - ENV. SENSITIVE AREA
(SEE ERIT TABLE)

mo

ffatt & nichol

0

20

40

80

SCALE IN FEET

REVISION DATES

06/19/19

CONSTRUCTION PLAN

SR 25/US 17 AT QUACCO ROAD
INTERSECTION IMPROVEMENTS

CHECKED:

DATE:

BACKCHECKED:

DATE:

CORRECTED:

DATE:

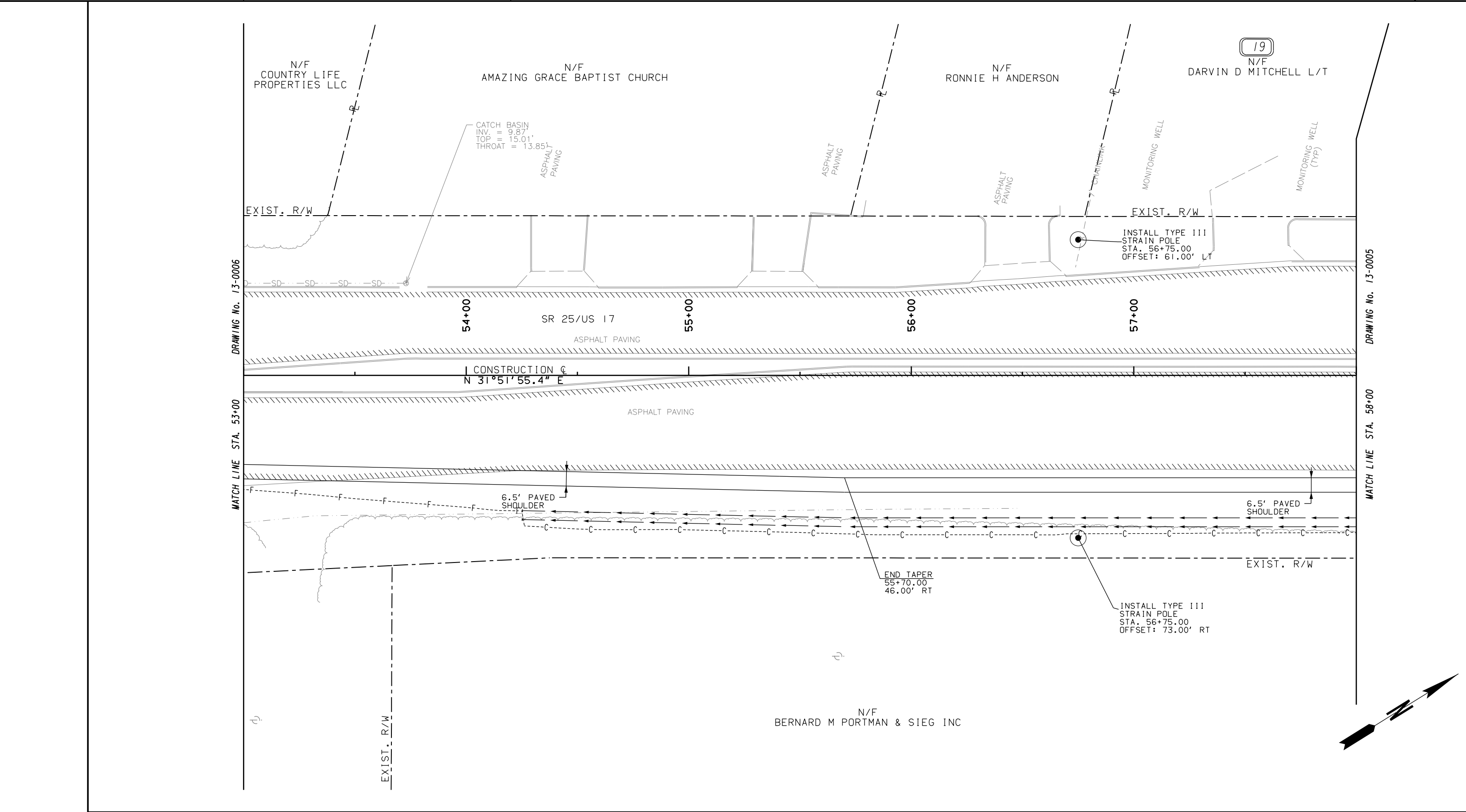
VERIFIED:

DATE:

DRAWING No.

13-0006

10/23/2015 GPLN



PROPERTY AND EXISTING R/W LINE
REQUIRED R/W LINE
CONSTRUCTION LIMITS
EASEMENT FOR CONSTR
& MAINTENANCE OF SLOPES
EASEMENT FOR CONSTR OF SLOPES
EASEMENT FOR CONSTR OF DRIVES

BEGIN LIMIT OF ACCESS.....BLA
END LIMIT OF ACCESS.....ELA
LIMIT OF ACCESS
REQ'D R/W & LIMIT OF ACCESS
ORANGE BARRIER FENCE
ESA - ENV. SENSITIVE AREA
(SEE ERIT TABLE)

mo

SCALE IN FEET

0

20

40

80

REVISION DATES		
06/19/19		

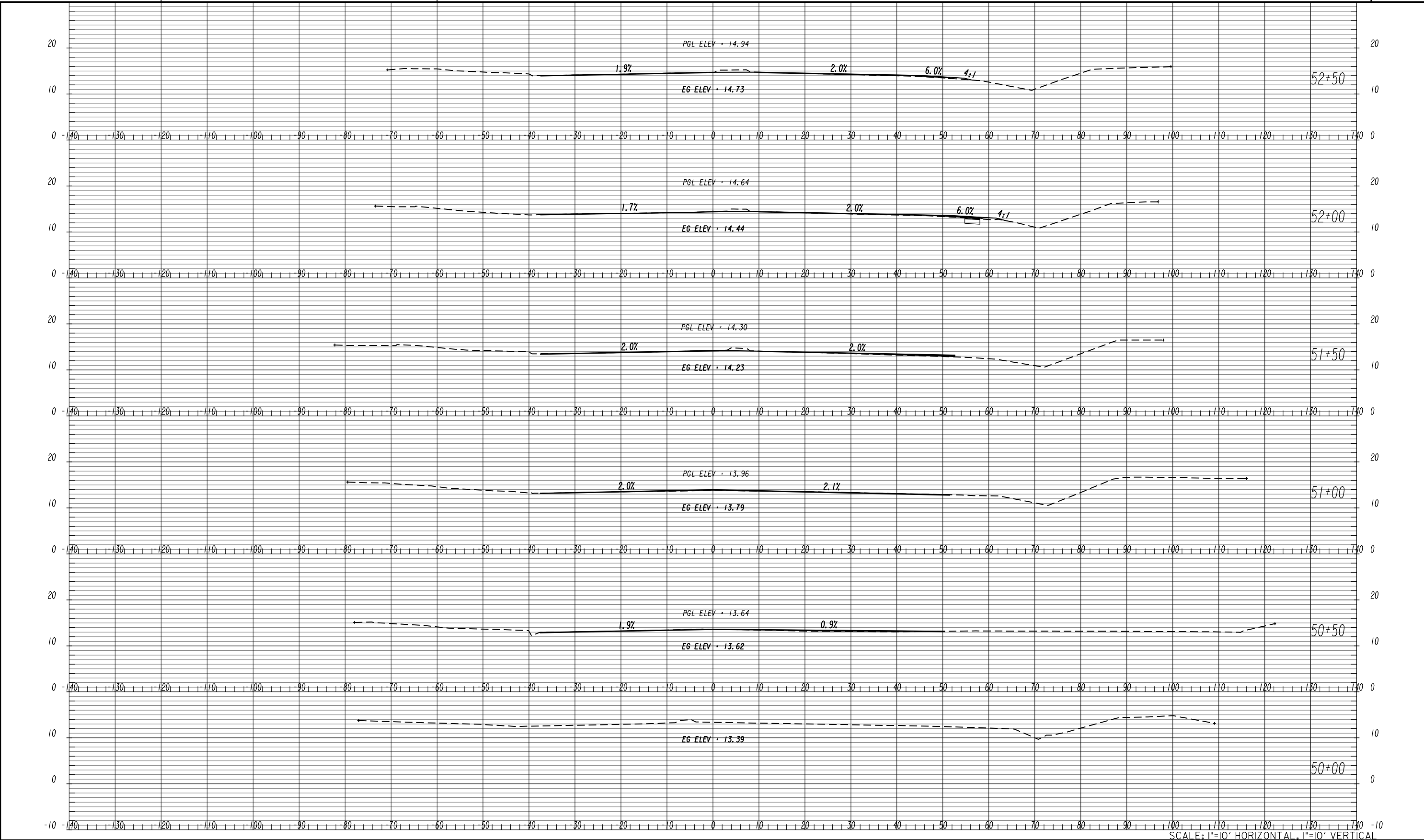
CONSTRUCTION PLAN

SR 25/US 17 AT QUACCO ROAD
INTERSECTION IMPROVEMENTS

CHECKED:	DATE:	DRAWING No. 13-0007
BACKCHECKED:	DATE:	
CORRECTED:	DATE:	
VERIFIED:	DATE:	



CHECKED:	DATE:	DRAWING No. 13-0008
BACKCHECKED:	DATE:	
CORRECTED:	DATE:	
VERIFIED:	DATE:	



10/23/2015

GPLN

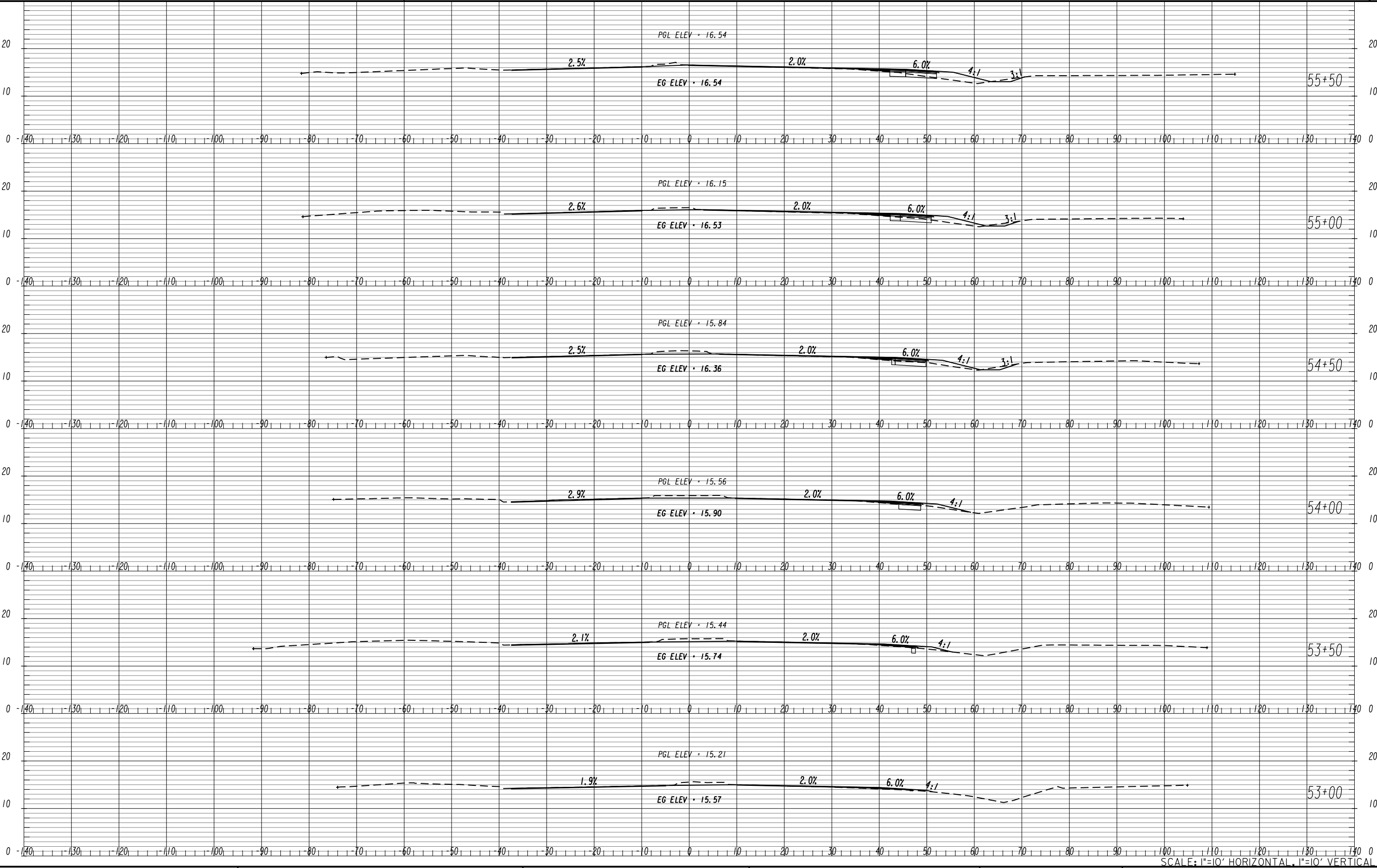
mo

fatt & nichol

REVISION DATES		
06/19/19		

EARTHWORK CROSS SECTIONS	
SR 25/US 17 AT QUACCO ROAD	
INTERSECTION IMPROVEMENTS	
CHECKED:	DATE:
BACKCHECKED:	DATE:
CORRECTED:	DATE:
VERIFIED:	DATE:

DRAWING No.
23-0009



10/23/2015

GPLN

mo

ffatt & nichol

REVISION DATES

06/19/19

CHECKED:

BACKCHECKED:

CORRECTED:

VERIFIED:

DATE:

DATE:

DATE:

DATE:

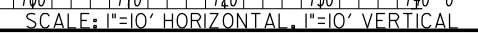
DRAWING No.

23-0010

EARTHWORK CROSS SECTIONS

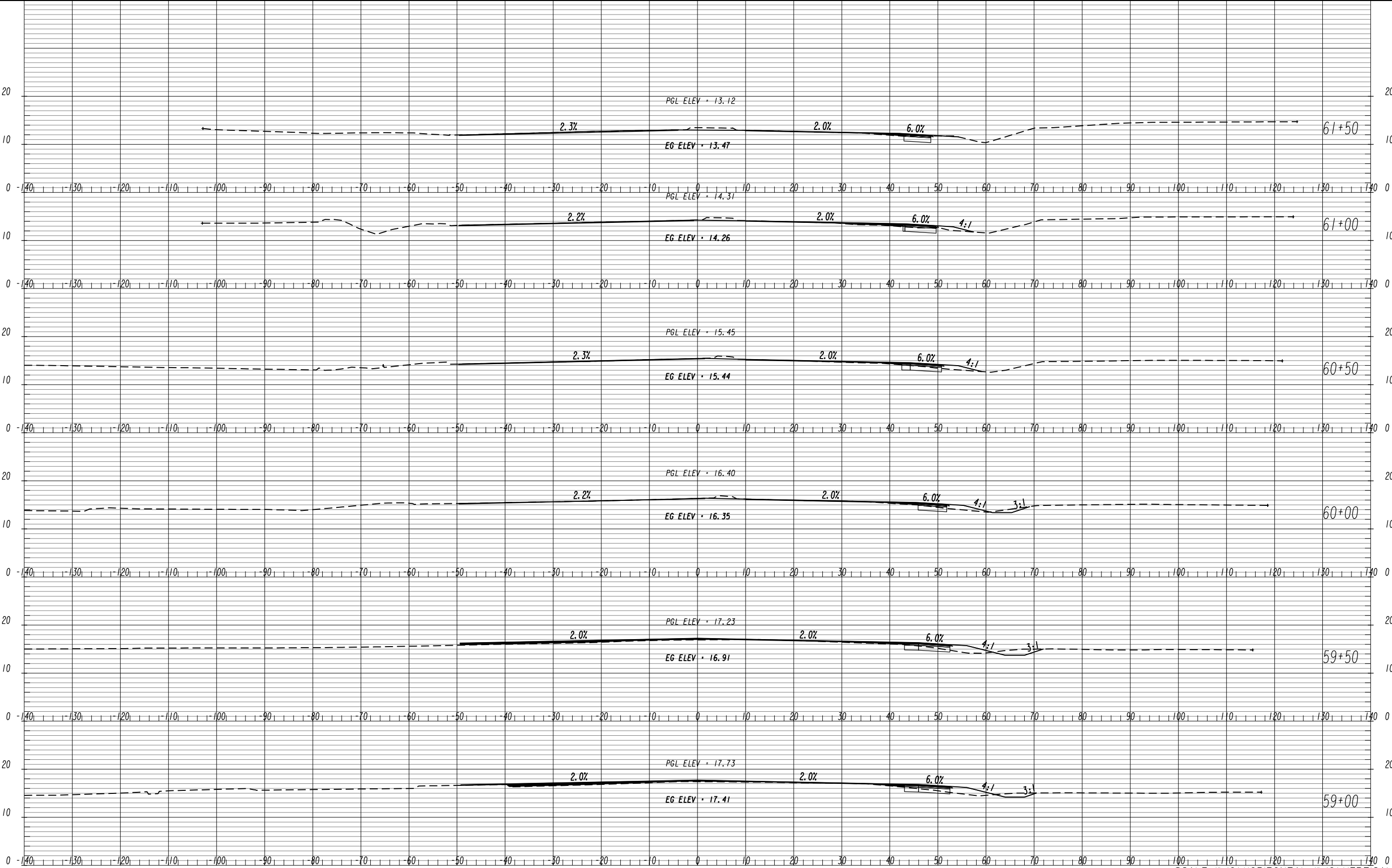
SR 25/US 17 AT QUACCO ROAD

INTERSECTION IMPROVEMENTS



SCALE: 1"=10' HORIZONTAL, 1"=10' VERTICAL			
EARTHWORK CROSS SECTIONS			
SR 25/US 17 AT QUACCO ROAD			
INTERSECTION IMPROVEMENTS			
CHECKED:		DATE:	DRAWING No. 23-0011
BACKCHECKED:		DATE:	
CORRECTED:		DATE:	
VERIFIED:		DATE:	

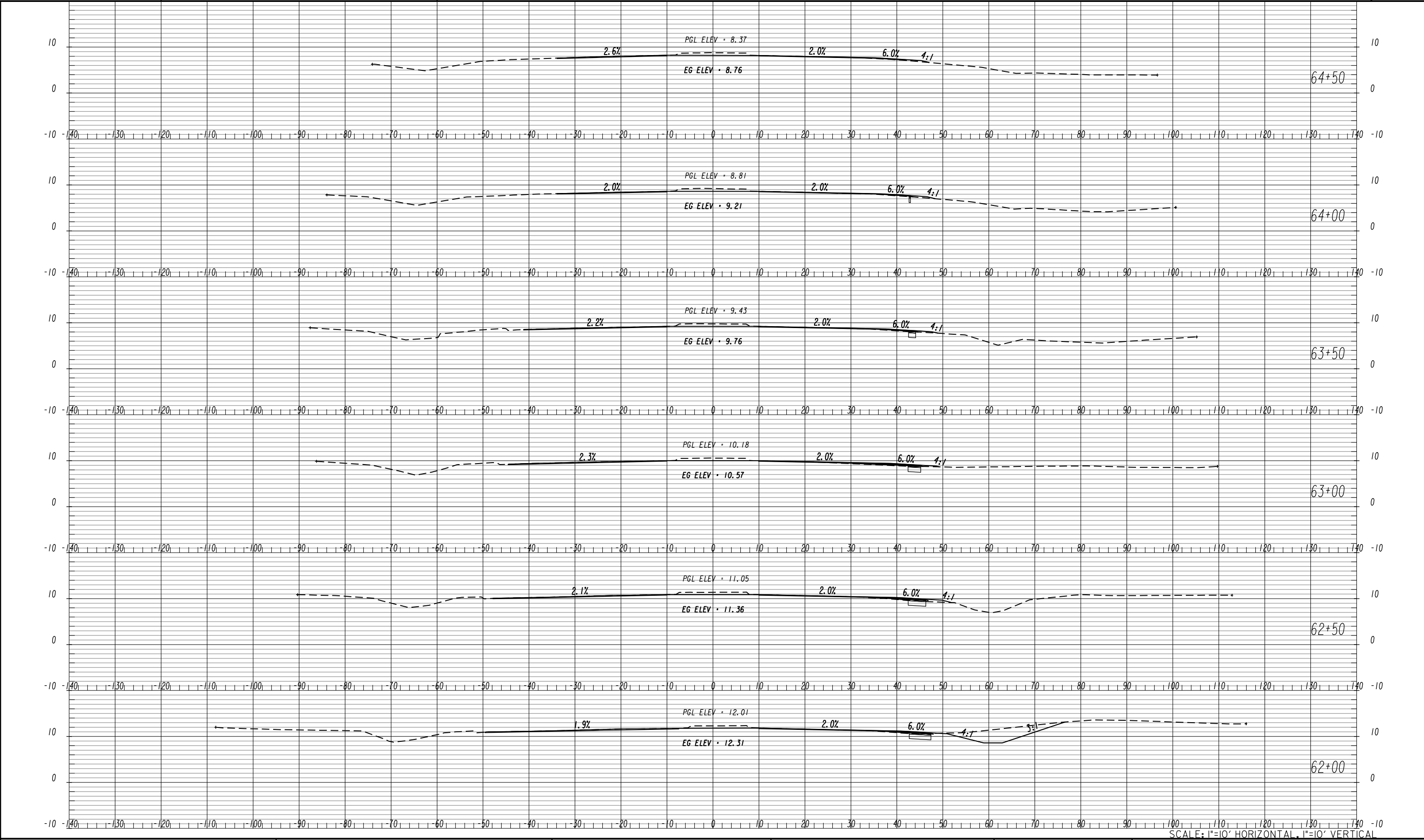




SCALE: 1"=10' HORIZONTAL, 1"=10' VERTICAL



REVISION DATES			EARTHWORK CROSS SECTIONS		
06/19/19					
			SR 25/US 17 AT QUACCO ROAD		
			INTERSECTION IMPROVEMENTS		
CHECKED:	DATE:	DRAWING No.	23-0012		
BACKCHECKED:	DATE:				
CORRECTED:	DATE:				
VERIFIED:	DATE:				



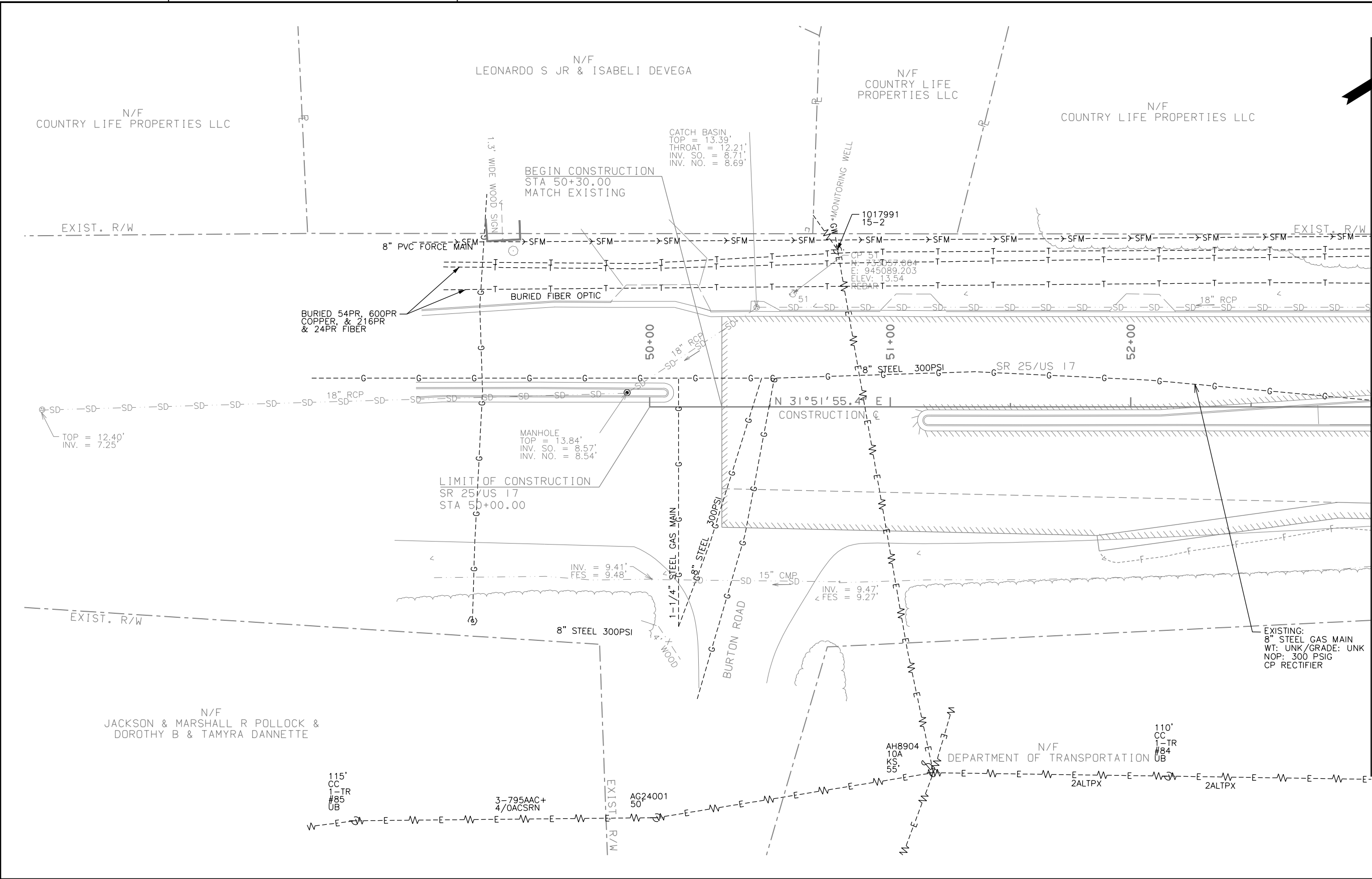
moffatt & nichol

REVISION DATES	
06/19/19	

EARTHWORK CROSS SECTIONS	
SR 25/US 17 AT QUACCO ROAD	
INTERSECTION IMPROVEMENTS	
CHECKED:	DATE:
BACKCHECKED:	DATE:
CORRECTED:	DATE:
VERIFIED:	DATE:

DRAWING No.
23-0013

10/23/2015
GPLN

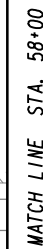


DRAWING No. 24-0007
MATCH LINE STA. 53+00

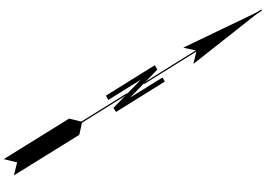
PROPERTY AND EXISTING R/W LINE
REQUIRED R/W LINE
CONSTRUCTION LIMITS
EASEMENT FOR CONSTR
& MAINTENANCE OF SLOPES
EASEMENT FOR CONSTR OF SLOPES
EASEMENT FOR CONSTR OF DRIVES

BEGIN LIMIT OF ACCESS.....BLA
END LIMIT OF ACCESS.....ELA
LIMIT OF ACCESS
REQ'D R/W & LIMIT OF ACCESS
ORANGE BARRIER FENCE
ESA - ENV. SENSITIVE AREA
(SEE ERIT TABLE)

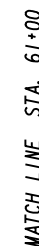
<



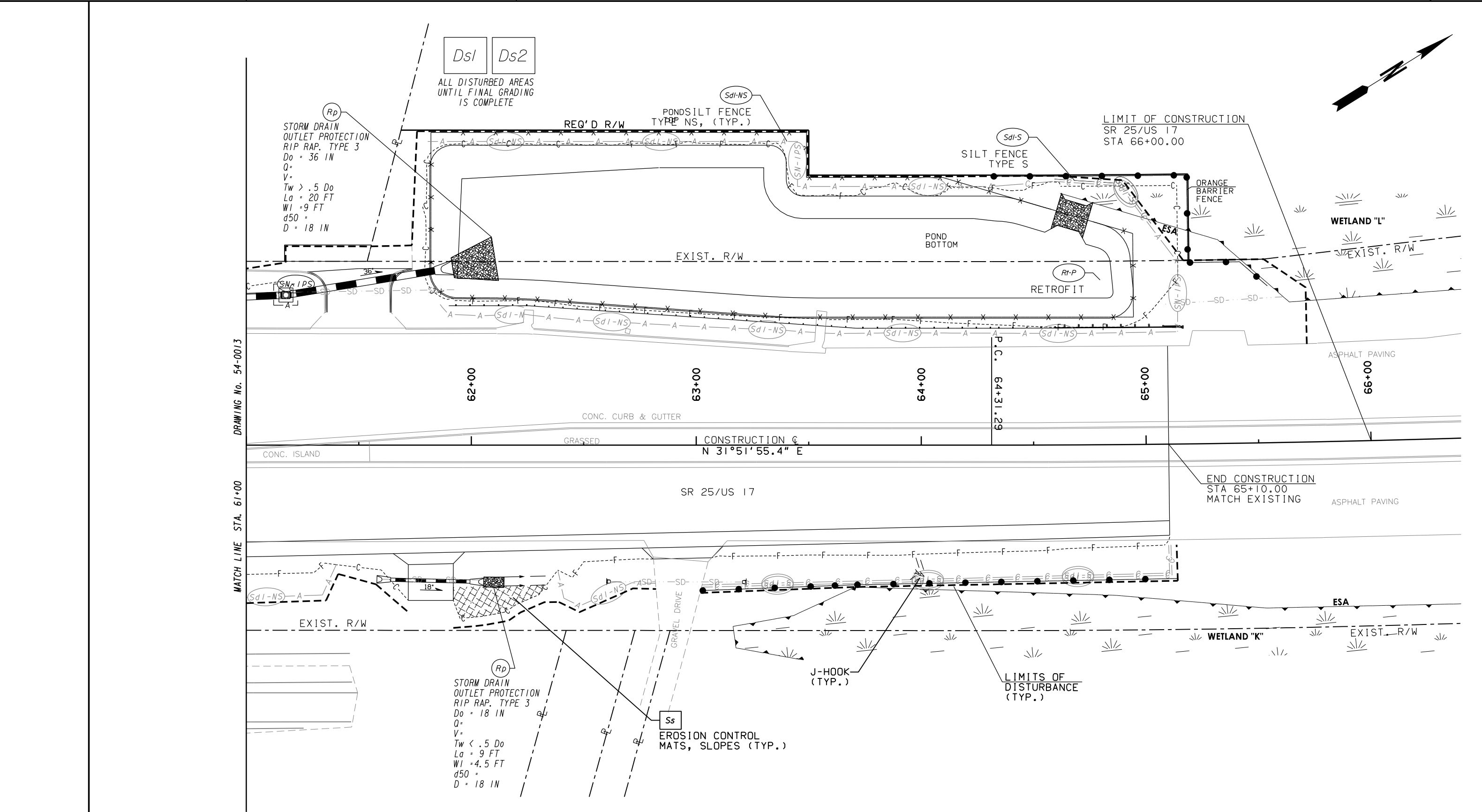
CHECKED:	DATE:	DRAWING No. 24-0007
BACKCHECKED:	DATE:	
CORRECTED:	DATE:	
VERIFIED:	DATE:	



CHECKED:	DATE:	DRAWING No. 24-0008
BACKCHECKED:	DATE:	
CORRECTED:	DATE:	
VERIFIED:	DATE:	



CHECKED:	DATE:	DRAWING No. 26-0008
BACKCHECKED:	DATE:	
CORRECTED:	DATE:	
VERIFIED:	DATE:	



PROPERTY AND EXISTING R/W LINE
REQUIRED R/W LINE
CONSTRUCTION LIMITS
EASEMENT FOR CONSTR
& MAINTENANCE OF SLOPES
EASEMENT FOR CONSTR OF SLOPES
EASEMENT FOR CONSTR OF DRIVES

BEGIN LIMIT OF ACCESS.....BLA
END LIMIT OF ACCESS.....ELA
LIMIT OF ACCESS
REQ'D R/W & LIMIT OF ACCESS
ORANGE BARRIER FENCE
ESA - ENV. SENSITIVE AREA
(SEE ERIT TABLE)

mo

fatt & nichol

0

20

40

80

SCALE IN FEET

REVISION DATES

06/19/19			

BMP LOCATION DETAILS

INTERMEDIATE PHASE BMP LOCATION DETAILS

SR 25/US 17 AT QUACCO ROAD

INTERSECTION IMPROVEMENTS

CHECKED:

BACKCHECKED:

CORRECTED:

VERIFIED:

DATE:

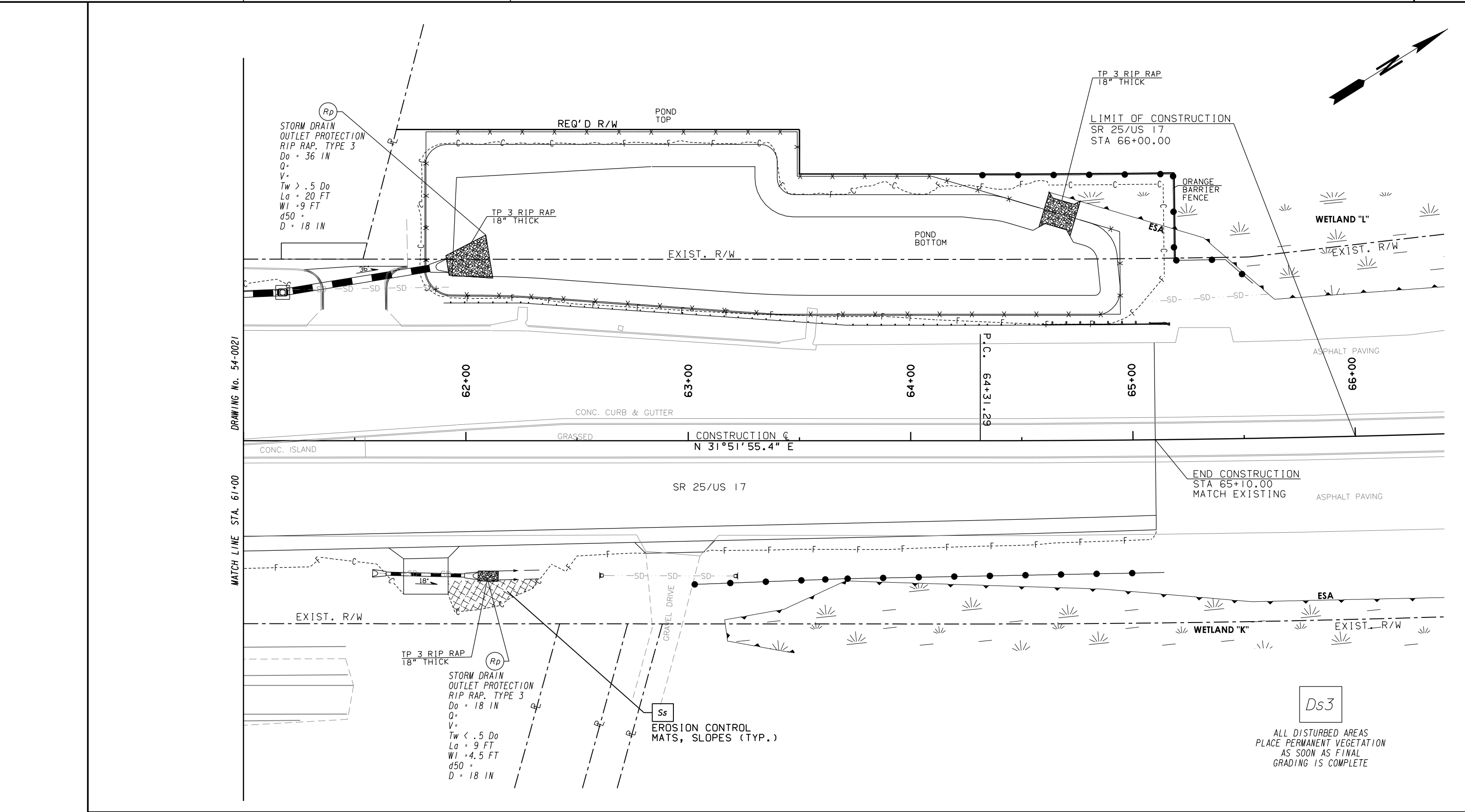
DATE:

DATE:

DATE:

DRAWING No.

54-0016



PROPERTY AND EXISTING R/W LINE
REQUIRED R/W LINE
CONSTRUCTION LIMITS
EASEMENT FOR CONSTR
& MAINTENANCE OF SLOPES
EASEMENT FOR CONSTR OF SLOPES
EASEMENT FOR CONSTR OF DRIVES